
John Deere Rx Converter

Version 1.1

Release Notes

May 2009

- **Purpose**
- **Installation**
- **Functionality**
- **Tips**
- **Items of Awareness**
- **Support**

Purpose

John Deere Rx Converter

John Deere Ag Management Solutions has long focused on delivering complete software solutions to its customers. Desktop software solutions for our GreenStar™ displays have historically been developed and sold by John Deere. As the realm of precision agriculture has evolved, many software vendors have entered the market. John Deere understands the importance of compatibility among these various solutions with our GreenStar displays, and has made the commitment to open data architecture.

Today, not every software solution in the market place is compatible with GreenStar 2 map-based prescriptions. The adoption of variable rate applications and shapefile (.shp) prescriptions has continued in recent years. Thus, it has become more important to provide shapefile prescription compatibility with the GreenStar 2 displays.

The John Deere Rx Converter enables this compatibility with a simple process to convert shapefile prescriptions into a GreenStar 2 acceptable (.fdShape) file format. The conversion can be accomplished for an individual file or as a batch process for many files, all while supporting a wide variety of prescription types (seed, chemical, fertilizer, etc.). The JD Rx Converter is available free of charge at www.stellarsupport.com. This tool is intended for North American and Australian usage and is only available in English at this time. The JD Rx Converter tool is completely stand alone and is not tied to any other desktop programs. *The JD RxConverter is NOT compatible with the Original GreenStar™ display.*

The JD Rx Converter tool requires the use of GS 2display software version 2.2.1163 or newer.

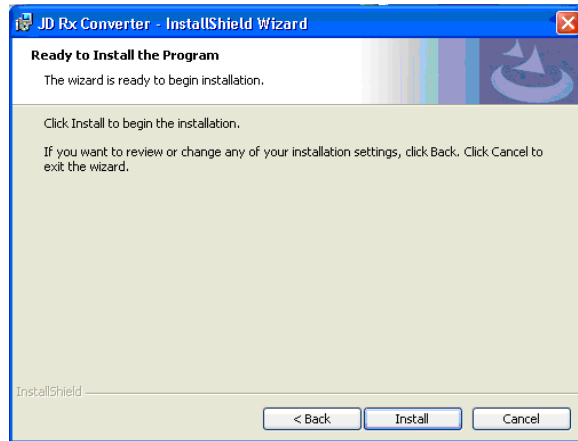
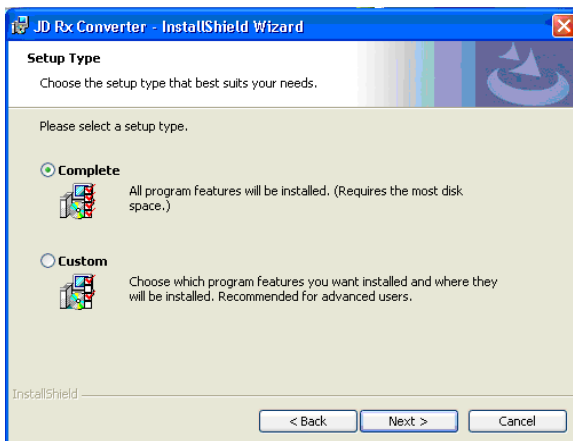
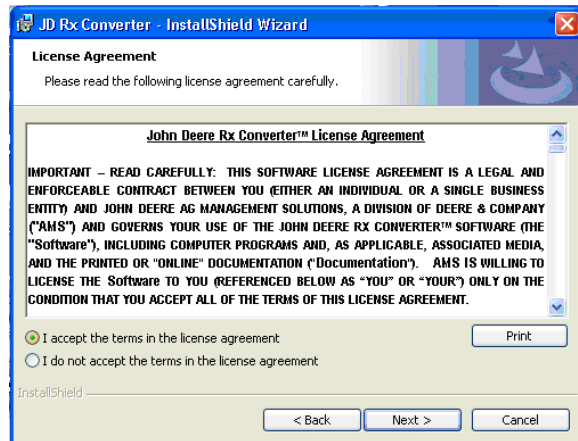
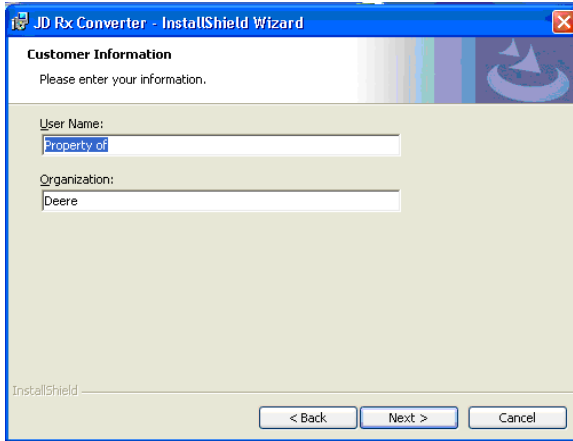
Variable Rate .shp file conversion process



Installation

John Deere Rx Converter

Follow the wizard steps to insure proper installation



After installed, an icon will appear on the desktop that allows users access to the program.

NOTE: After the program is installed and is then opened for the first time, Windows® Vista users will get an error pop-up that an “Unhandled Exception has occurred”. Clicking “continue” will close the pop-up and the program will function normally.

Functionality

John Deere Rx Converter

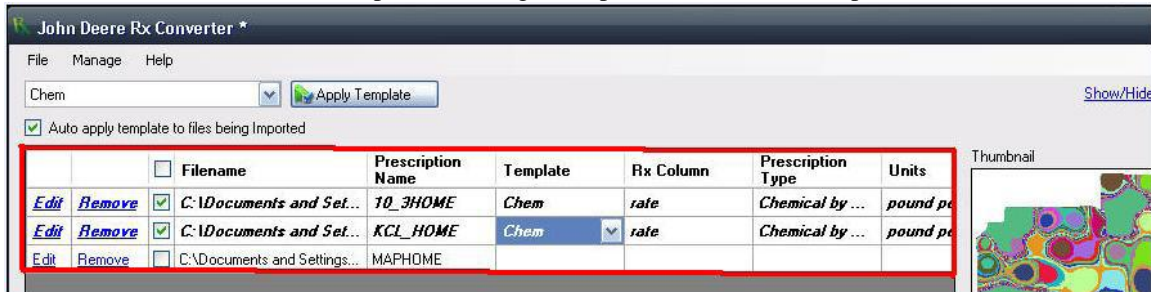
Overview:

- The JD Rx Converter desktop software utility allows users to easily convert shapefile (.shp) prescriptions (Rx) for any third-party software into the GS2 compatible (.fdShape) file format.
- The .shp files can simply be dragged and dropped onto JD Rx Converter application window or imported using the Add Files tool located in the bottom left of the program screen. Once imported, the prescription files can be individually or batch exported in the GS2 (.fdShape) format. *This utility does not change the existing GS2 map-based prescriptions file loading process.*

Notes: -Windows Vista users will not have drag and drop functionality and must use the “Add Files” tool to import files to the application window.

- The JD Rx Converter is not compatible with the Original GreenStar™ display.

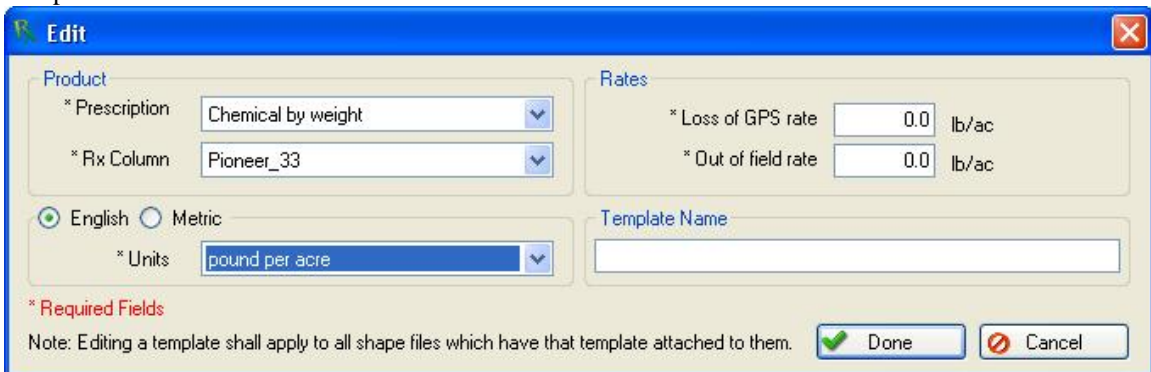
John Deere Rx Converter – Workspace with drag & drop area shown in red. Exported files in italics



Templates:

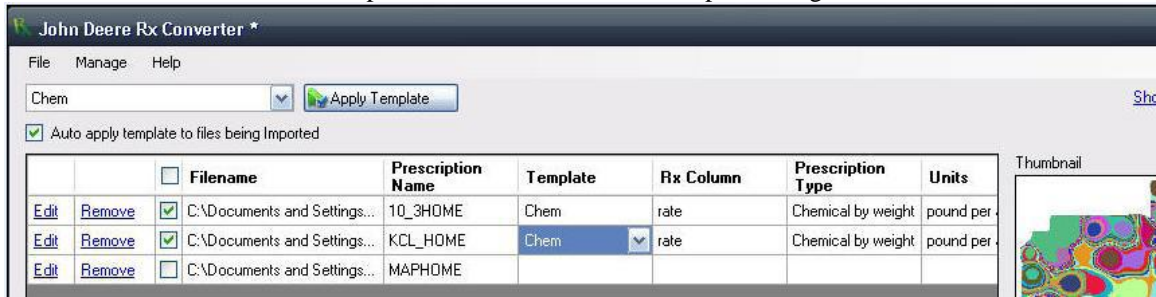
- Product templates can be created by selecting “Edit” next to a .shp file imported. Templates can be designed to handle various Prescription Types and (UOM) Units of Measure. English and Metric units are now supported

Template Window



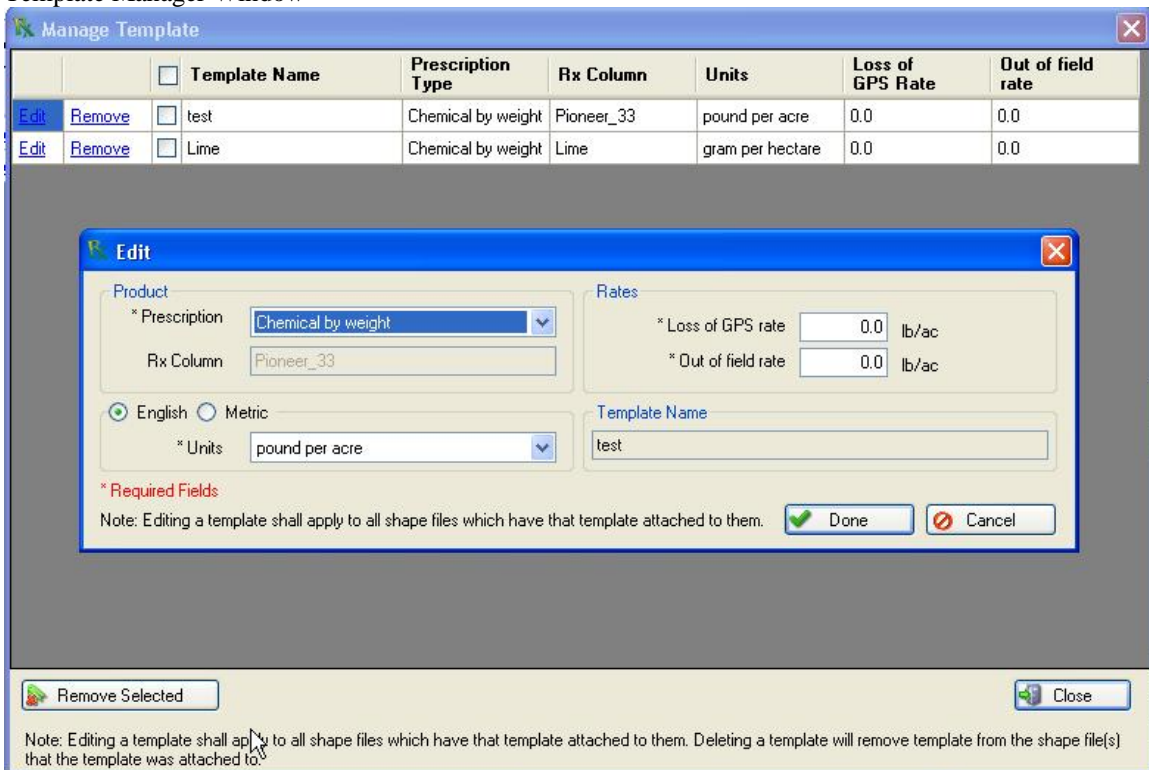
- **Template functionality:** Once you have setup a template, you can choose to apply the template to all new .shp's being imported into the tool. This eliminates any additional steps required to export the prescriptions in a GS2 format. In addition, templates can be selected individually in the main application window.

John Deere Rx Converter – workspace shown with automatic template being used

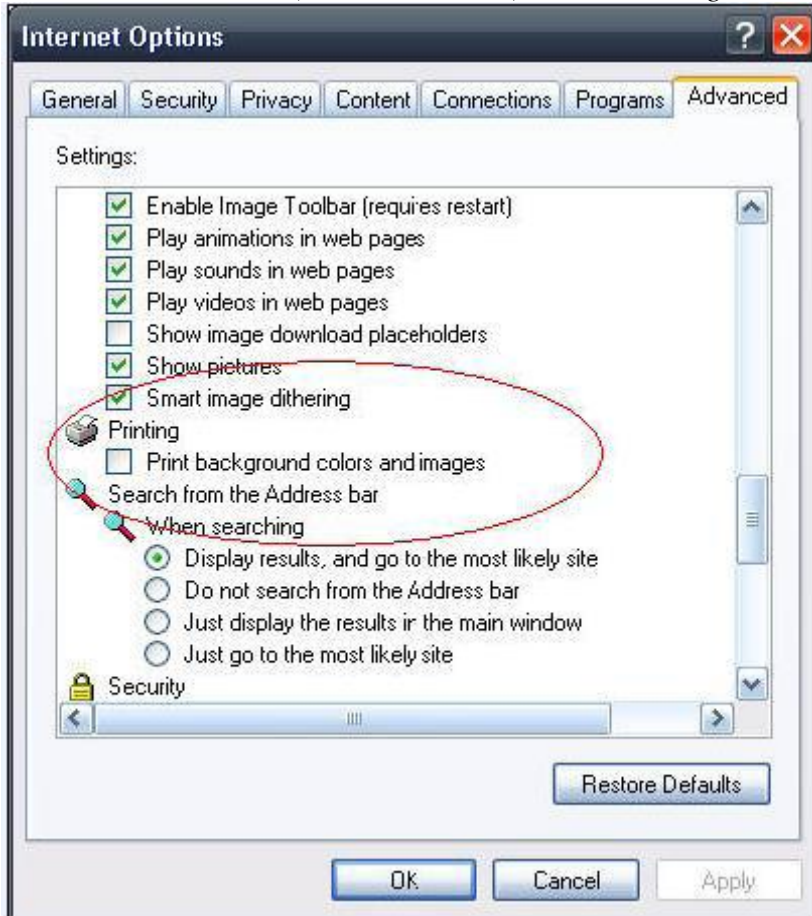


- Templates can be edited by utilizing the Manage> Template toolbar selection.

Template Manager Window

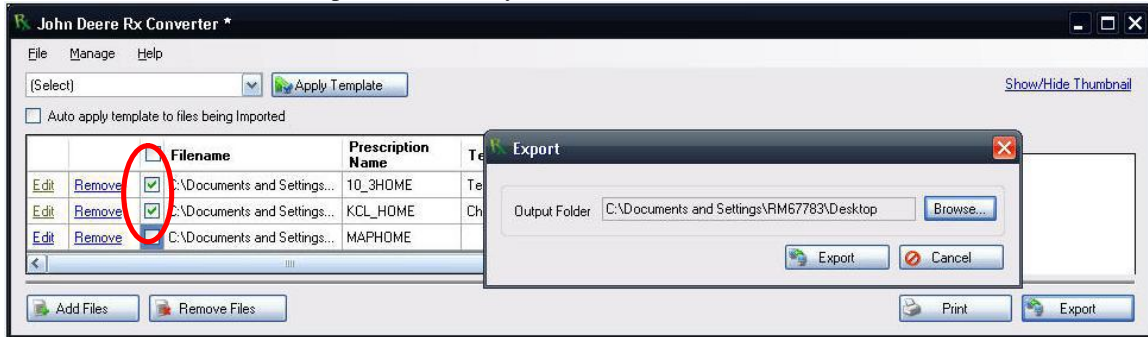


- Printing and Exporting Functionality: These functions can be completed in a batch or individual basis.
 - To enable printing background images & product legends enable the following functionality:
Internet Explorer>Tools> Internet options> Advanced (tab)> Printing Menu> (select check box) – “Print background colors and images”

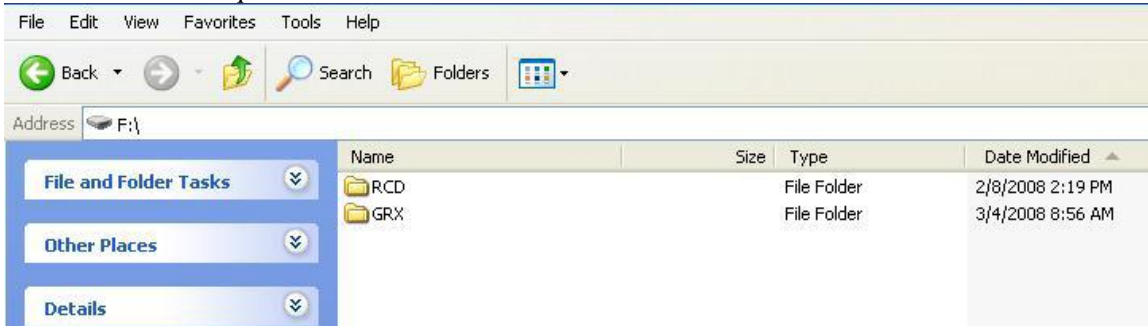


- Exporting GS2 Prescriptions Files
 - Supports export individual or multiple prescription files
 - Files selected will be the only files exported. Selected files are circled below
 - Select your file destination using the export window shown below
 - Files will be exported inside a “GRX” file folder.
 - **The GS2 requires that a GRX folder be placed at the highest level of your flash card.** (Folders shown in screen shot below)
 - The RCD & GRX folders are the two required folders for GS2 operation
 - The GRX folder is only for storing GS2 .fdShape prescription files
 - The GRX folder & files can be copied directly to the GS2 flash card or onto your computer.
 - Individual GS2 .fdShape prescriptions can be copied into the GRX folder as desired

John Deere Rx Converter – Export functionality



GS2 Flash Card – Required Folders

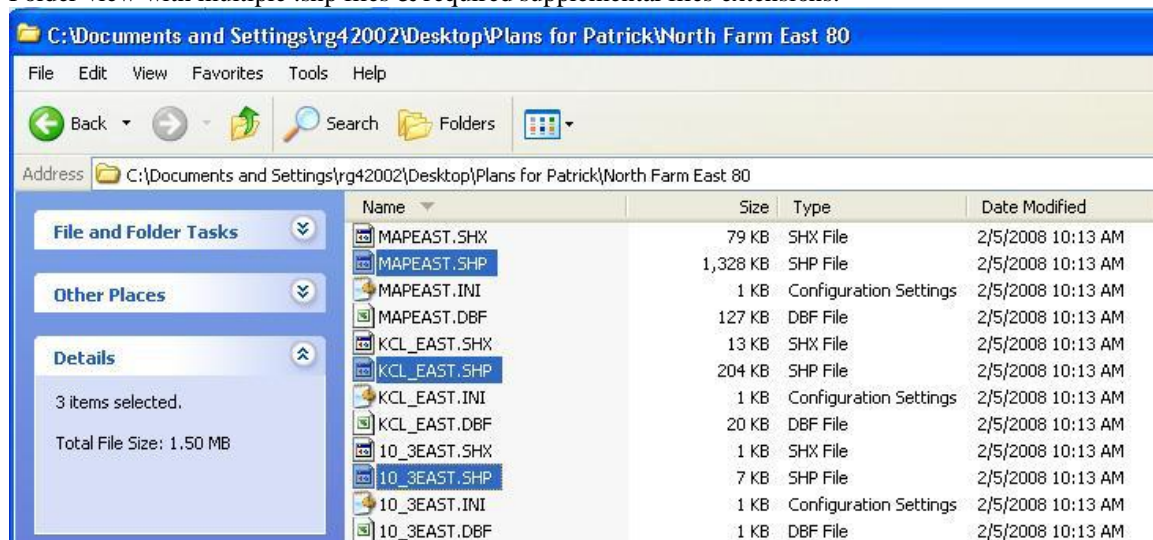


Tips

John Deere Rx Converter

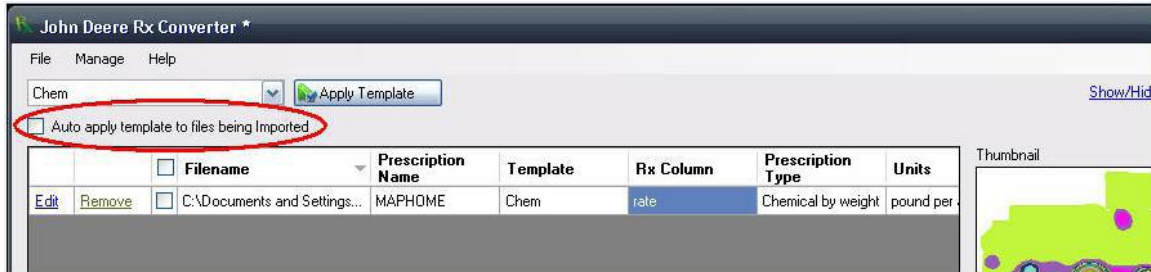
- Proper Naming of Prescription (Rx) files
 - One requirement of the individual prescription file management is the need for effective file naming. The new (.fdShape) prescriptions do not contain Client, Farm, Field designations or product type (Urea, MAP, DAP, etc.) within the file.
 - It will be very important for the prescriptions file name to contain information that identifies the Client, Farm, & Field in addition to the product type.
- File Management: shp & .fdShape file transfer and storage requirements
 - Each .shp & .fdshape will contain additional files with the same name
 - Additional files may have the following extensions: *.fdData*, *.grx*, *.shx*, *.prj*, *.dbf*, *.ini*, & more not listed
 - **DO NOT DELETE THESE ADDITIONAL FILES!**
 - You only need to copy or drag & drop the .shp file into the John Deere Prescriptions Converter utility. Additional files will automatically be linked to .shp & .fdShape

Folder view with multiple .shp files & required supplemental files extensions.

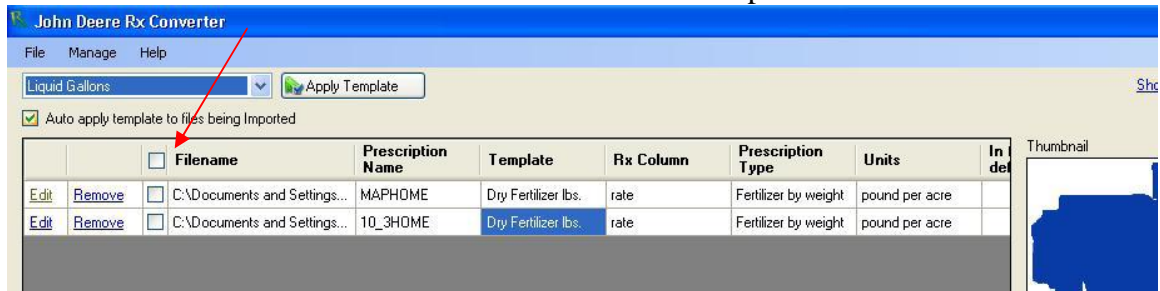


- File Import with Auto Apply Template
 - Select the desired template from the template combo box.
 - Check the “Auto apply template to files being imported” box
 - All new files being imported will have the selected template applied on import

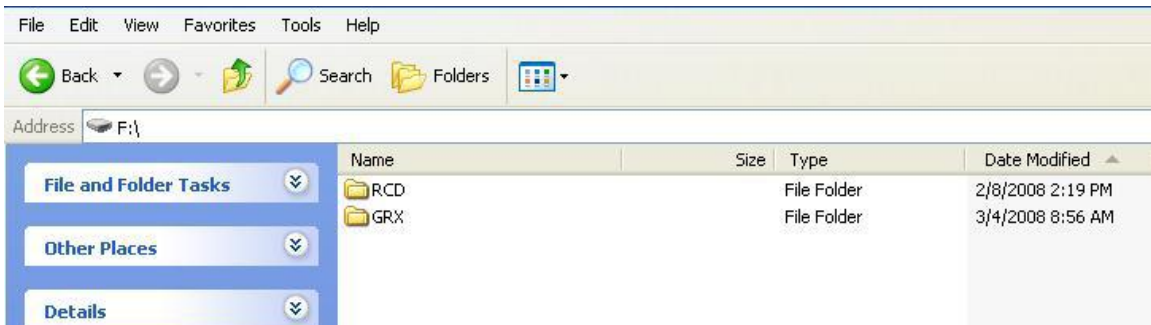
File Import - Auto apply template



- How to select all imported files
 - Select the checkbox below in order to select all imported files.



- Loading exported files onto GS2 display compact flash card
 - Exported files .fdShape files can be managed in several ways
 - You can export files directly from the JD Rx Converter to the GS2 card or store them to your computer.
 - All .fdShape files must be placed inside the “GRX” folder on the flash card in order to be loaded on the GS2 display
 - Individual .fdShape files can be copy and pasted onto the flash card individually or in multiples
 - Once files have been converted into the .fdShape format there is no need for the John Deere Prescriptions converter tool to move files to the GS2 flash card.

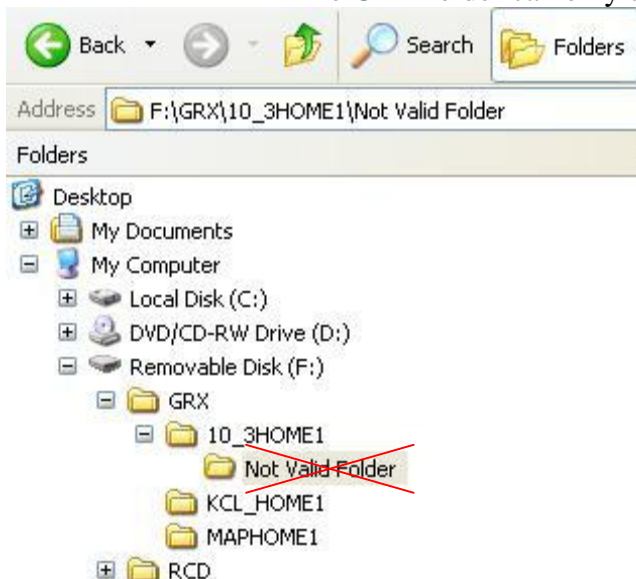


Items of Awareness

John Deere Rx Converter

Important items to remember:

- Number of prescription files per GS2 flash card
 - Each flash card is **limited to a maximum of 30** .fdShape GS2 prescriptions. Additional prescriptions loaded to the flash card will not load properly.
- Prescription Client, Farm, Field, (CFF) & product designations
 - This new prescriptions file format does not automatically transfer the CFF & prescription product type related to each prescription.
 - The prescription product type will have to be provided in the prescription file name in order to eliminate duplicate prescriptions with the same name. (i.e. “field name”.”product type”)
 - Operators can still choose to select the prescription product type & Client, Farm, Field from a list or enter the fields manually.
- Flash card required folders
 - Each GS2 flash card will require a “RCD” & “GRX” at the top level in order to function properly
 - The “GRX” folder is where all .fdShape GS2 prescriptions file must be located
 - The GRX folder can only contain one level of folders below it.



Support

John Deere Rx Converter

Customer Contact Center (CCC)

If you need help and cannot find the answer in the User Guide contact the CCC. The CCC is open 24 hours, 7 days a week, and 362 days a year (closed Thanksgiving Day, Christmas day, and New Years Day).

www.stellarsupport.com

E-mail: GreenStar@JohnDeere.com

North America: 1-888-GRN-STAR

Australia: 0011-800-0000-3333

New Zealand: 00-800-0000-3333