

Funk™ 2000 Series Powershift Transmission

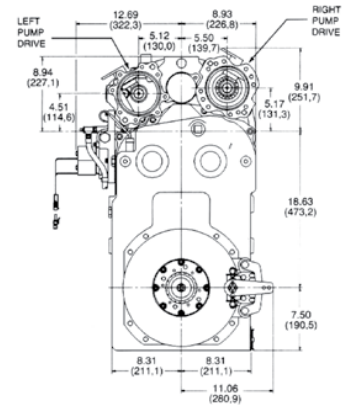
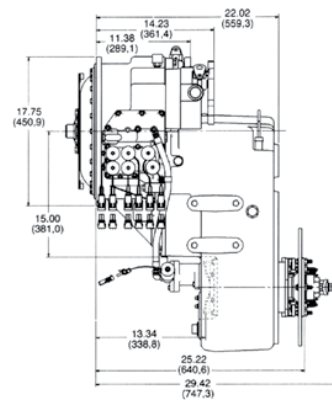
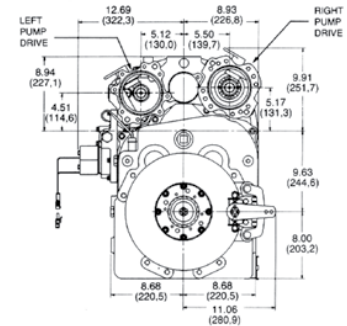
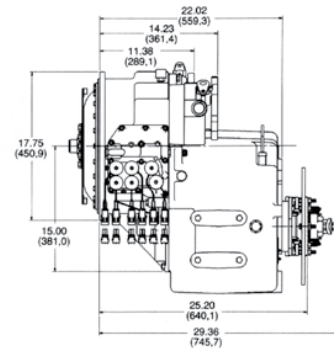
Industrial Drivetrain Specifications



JOHN DEERE



Dimensions



Ratings

Net input power (max)	168 kW (225 hp)
Input no load speed (max)	3000 rpm
Converter stall torque (max)	1627 Nm (1200 lb-ft)

General data

Rotation

Input	Counterclockwise
Output (forward gears)	
Counterclockwise	473.2 mm (18.63 in) drop
Clockwise	244.6 mm (9.63 in) drop
Approximate dry weight	336-408 kg (742-900 lb)
Mounting	Engine, midship, or remote
Speeds	3F/3R 4F/3R 6F/3R

Controls

Electrical or mechanical

Options

- Ground speed rpm
- Engine-side disconnect
- Integral no-spin differential
- Disc parking brake
- HMD or converter input

Pump Drives

	Left side	Right side
Rotation (viewing drive page)	Counterclockwise	Counterclockwise
Ratio (engine speed to pump speed)	1:1	1.15:1
Mounting and spline size	SAE A, B, or C	SAE A, B, or C
Disconnect available for mounting size	SAE C	SAE C and B
Power (max intermittent)	168 kW (225 hp)	168 kW (225 hp)

Specifications and design subject to change without notice. Ratings may vary depending on application and service. Application and installation are subject to review by John Deere.

Photographs may show non-standard equipment.

Gear ratio ranges

Drop mm (in)	Version	Forward						Reverse		
		F1	F2	F3	F4	F5	F6	R1	R2	R3
244.6 (9.63)	3/3	3.68	2.50	1.00	–	–	–	3.68	2.50	1.00
	3/3	5.80	2.50	1.00	–	–	5.80	2.50	1.00	–
	4/3	6.50	4.42	1.77	1.00	–	–	6.50	4.42	1.77
	4/3	10.25	4.42	1.77	1.00	–	–	6.50	4.42	1.77
	6/3	6.50	4.42	3.68	2.50	1.77	1.00	6.50	4.42	1.77
	6/3	8.77	5.80	3.78	2.50	1.51	1.00	10.25	4.42	1.77
473.2 (18.63)	6/3	10.25	5.80	4.42	2.50	1.77	1.00	10.25	4.42	1.77
	3/3	2.94	2.00	0.80	–	–	–	2.94	2.00	0.80
	3/3	4.64	2.00	0.80	–	–	–	4.64	2.00	0.80
	4/3	5.20	2.94	1.41	0.80	–	–	5.20	3.53	1.41
	4/3	8.20	3.53	1.41	0.80	–	–	8.20	3.53	1.41
	6/3	5.20	3.53	2.94	2.00	1.41	0.80	5.20	3.53	1.41
	6/3	7.01	4.64	3.02	2.00	1.21	0.80	8.20	3.53	1.41
	6/3	8.20	4.64	3.53	2.00	1.41	0.80	8.20	3.53	1.41

Features and benefits

Flexible drive types

- The 2000 Series has the input drive options demanded by most industrial applications.
- Torque converter or HMD are available, giving you the flexibility to design your machine to fit your needs.

No-spin differential

- This output shaft option is a must for 4WD towing vehicles that operate on high-traction surfaces.
- Eliminate unnecessary tire wear with the only limited-slip differential in the industry.

Electric control valves

- This type of transmission shift control is your best option for vehicles used in remote locations.
- Electronic control offers flexibility and the easy serviceability of mechanical control.

Mountings

Engine

- SAE #3 standard (SAE #2 optional) dry converter housing with flex plate converter drive. Side-mounting pads are recommended for engine/transmission cradle-mounting.

Midship

- Side-mounting pads and input bill (engine-mounted torsional damper required).

Remote

- Two side-mounting pads (engine-mounted torque converter PTO with charge pump required).

Clutches

- Fully modulated, oil-cooled, multidisc, and hydraulic-actuated.