

# 6M SERIES TRACTORS





# FOR EVERYTHING YOU DO

Since their introduction in 2012, our 6M Series tractors have earned the enviable reputation as definitive all-rounders. Building on that success, we're enhancing the 6M Series with more features. Add all this to the quality, strength and reliability that the name John Deere stands for, and you have a tractor that brings you all the versatile capabilities you need.

---

Whether you're an arable or livestock farmer, speciality producer or a contractor, a 6M tractor will quickly prove its worth to your operations. That's because it has been developed and built by people with a profound understanding of the challenges and opportunities that confront you and your operations every working day. For livestock farming, for instance, the uncomplicated 6M tractor requires little routine maintenance, leaving you more time to concentrate on your animals.

The new enhancements also make the 6M Series an attractive alternative to some more complex and more expensive competitors.





### Contents

- Introduction ..... 2
- Versatility & Target groups ..... 4
- Quality ..... 6
- Overview ..... 8
- Cab & Controls ..... 10
- Ride Comfort ..... 12
- Engine ..... 14
- Transmissions ..... 16
- Hydraulics ..... 18
- Hitches & PTOs ..... 20
- R Series front loaders ..... 22
- Precision productivity (AMS) ..... 26
- MyJohnDeere & JDLink | Maintenance ..... 28
- Attachments ..... 30
- Specifications ..... 32





Livestock farm, Ávila (Spain)



Livestock farm, Bern (Switzerland)

### Livestock farming

Nothing is more important than the welfare of your livestock, so your ideal tractor is one that carries out all necessary tasks without missing a beat. A tractor that, when it's not busy mowing, tedding, spraying or spreading, can be deployed for all manner of front loader tasks, including feeding, cleaning out stalls, loading and unloading trailers. That's your 6M Series – a true all-rounder, all the year round.



Mixed farm, Plymouth (UK)

### Mixed farming

For a versatile 6M Series tractor, mastering the multiple challenges of both arable and livestock farming is, quite simply, all in a day's work. Every day, through every season, year after year.

# At home in every field, farmyard, orchard, country lane ...

1

2

1

2

4

1

2



Our new 6M Series tractors have been designed and engineered to excel wherever they are put to work. They are equally at home in the field carrying out light or heavy tillage, crop care and grassland work with the PTO, speciality agriculture, or loader work in your farmyard. Not to mention fulfilling on-road transport tasks with ease.

The new enhancements make the 6M Series even more powerful, versatile and easy to operate and maintain, all of which increases their appeal to contractors, too.



Arable farm, Łódź (Poland)

**Arable farming**

Benchmark power efficiency makes the 6M Series tractor your reliable and strong in-field workhorse. It has the power and capacity you need to carry out all your ploughing, seeding, cultivating and harvesting tasks. Our 6175M and 6195M tractors make light work of even the heaviest tasks.



Arable farm, Arc-lès-Gray (France)

**Speciality crops**

Versatility is built in to every 6M tractor, but the extreme manoeuvrability of the short wheelbase models makes the 6110M and 6125M models particularly suitable for crop care, orchard work and speciality crops.



Contractor business, Potsdam (Germany)

**Contractor operations**

As an accomplished all-rounder, a 6M Series tractor is ideal for many contractor applications. In addition to the capabilities already listed on this page, the 6M can be equipped with John Deere fleet management solutions, so you'll always know where it is, what it's doing and how well it's performing.





What's more, 6M tractors are built at our facility in Mannheim, Germany, where we constantly review our procedures and practices to reduce complexity, improve effectiveness and optimise efficiency. And by implementing six sigma quality guidance principles, best practices and common tools and processes, we can focus on maximising quality in a systematic and cost effective way.

We also talk and listen to you, our customers. Your opinions and feedback, combined with our innovative engineering initiatives, help us develop the machinery and equipment that work hard to improve the success of your operations.



#### **Customer focus group**

We keep our finger on the pulse of the market by involving customers in the product development process right from the beginning. Long before a new tractor is launched, the prototype will already have been evaluated by a representative group of customers. We see great value in the input of these agricultural professionals.





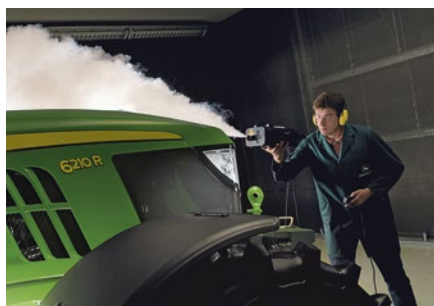
**ASSURED RELIABILITY.  
MINIMAL MAINTENANCE.  
THAT'S JOHN DEERE QUALITY**

All John Deere agricultural machinery is built to the highest possible standards. Our 6M Series is a prime example of this philosophy, which is why all major components – engines, transmissions and full frame chassis – are designed, engineered, manufactured and tested by John Deere. And they are all designed to work perfectly together.



**Customer satisfaction index**

Six months after taking delivery of your tractor, you will receive a questionnaire that enables you to tell us about your experience with our product. At John Deere, this has been standard practice for years, and the resulting data has contributed to new product development and the quality of our sales, service and manufacturing processes.



**Relentless research**

Our reputation as the manufacturer of reliable agricultural machinery is put to the test every day. So, before our tractors reach the marketplace, the John Deere Development Engineering Group subjects them to two years of intensive testing.



**Serious testing**

Wind tunnels, cold rooms, bump tracks, tilt platforms, electrical magnetic interference tests and mud baths recreate the most extreme of all agricultural conditions. Because we know that, in the real world, you need tractors that simply won't let you down.



**Loader ready**

Front loader ready package ex-factory  
New R Series front loaders  
New electronic joystick

**Integrated solutions**

AutoTrac & ISOBUS for all models

**6195M**

New 6M flagship

**Durability**

PermaClutch 2

1

2

3

4

## Capability without complexity

The established strengths and capabilities of the 6M Series have written their own success story. The next chapter starts here, with increased power density and more comfort and convenience. Our new “top of the line” model is the 6195M with rated power of 195 hp (97/68 EC).

This new 6M is, of course, built upon John Deere’s renowned full frame design, providing the highest structural integrity and lower vibration levels. The hydraulic system has been upgraded to provide the higher lift capacity required for bigger and heavier implements. Good news for your productivity.

### SIX MODELS, THREE WHEELBASES



2,580

Compact, light and agile

6110M, 6125M



2,765

Versatile, efficient and powerful

6140M, 6155M



2,800

Heavy-duty workhorse

6175M, 6195M





**Comfort**

TLS front axle suspension  
Mechanical cab suspension

**Superb hydraulics**

Pressure Flow Compensated hydraulic system  
Up to 4 rear SCVs  
Integrated economy front hitch

**Strong backbone**

Unique full steel frame chassis

5

6

7



8

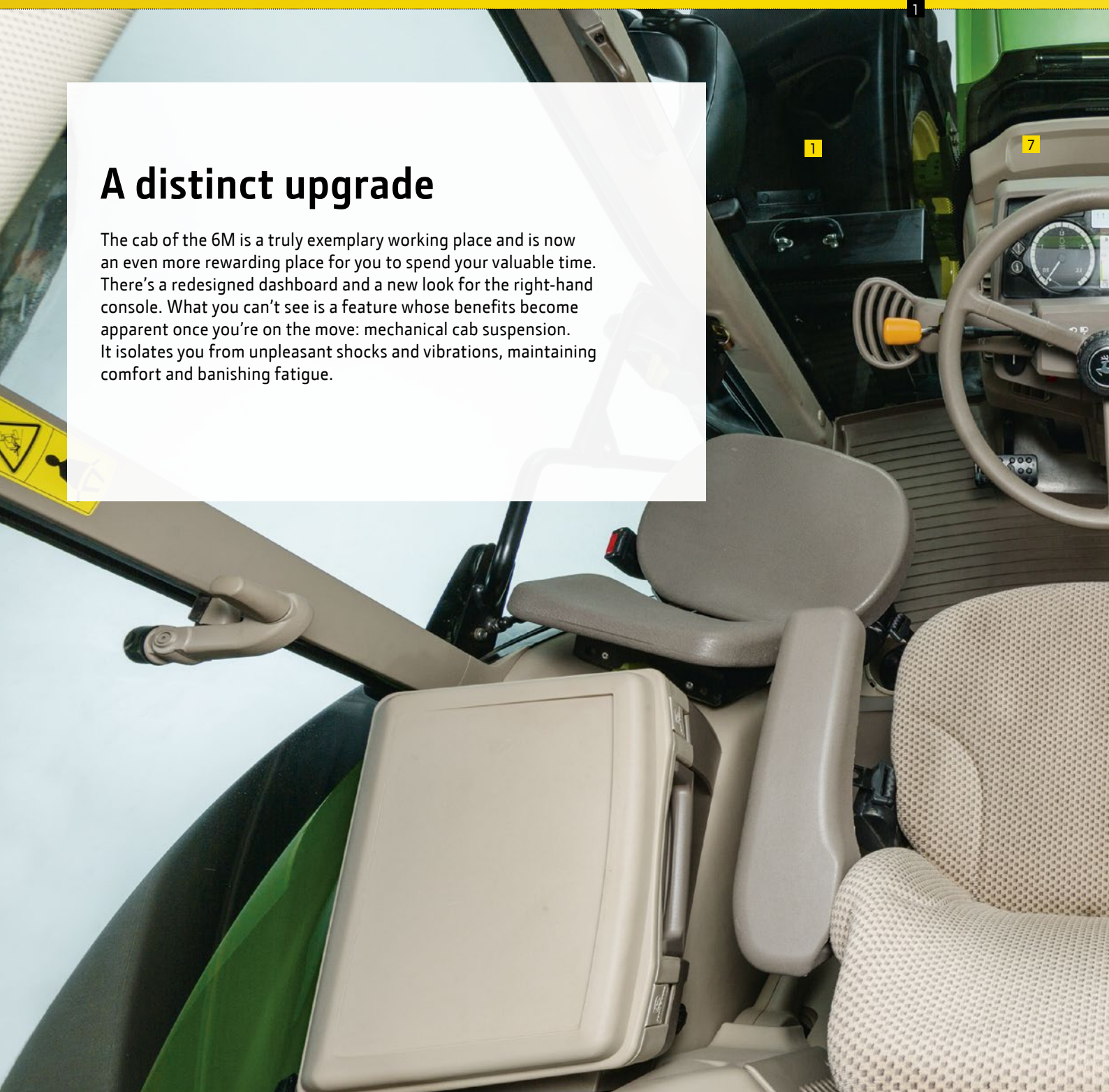
**Widest transmission portfolio**

PowrQuad Plus  
Semi-automatic AutoQuad Plus  
Semi-automatic AutoQuad Plus EcoShift  
New CommandQuad Plus  
New CommandQuad Plus EcoShift



## A distinct upgrade

The cab of the 6M is a truly exemplary working place and is now an even more rewarding place for you to spend your valuable time. There's a redesigned dashboard and a new look for the right-hand console. What you can't see is a feature whose benefits become apparent once you're on the move: mechanical cab suspension. It isolates you from unpleasant shocks and vibrations, maintaining comfort and banishing fatigue.



### Redesigned dashboard

The redesigned dashboard with clear graphics and touch-sensitive controls has been optimised to provide a coherent overview of all major systems.



New look right-hand console

Multiple seat options

Electrical mid-stack valves

Optional CommandQuad Plus transmission

Optional GreenStar display

Redesigned dashboard



**New CommandQuad Plus**

The convenience of clutch-less automatic shifting.



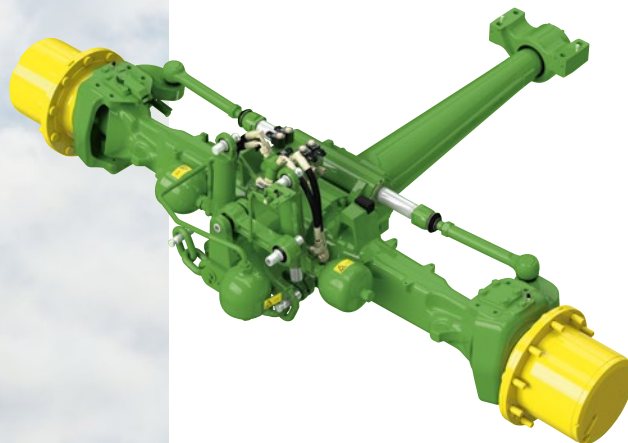
## COMFORT IS NOT A LUXURY

A comfortable operator is a safer, more alert and more productive operator. The John Deere full frame design provides a rigid platform that absorbs and resists loads and shocks transmitted via the wheels, heavy implements or front loader. To minimize the fatigue and stress caused by unpleasant vibrations, 6M tractors can be specified with optional mechanical cab suspension.

In addition, there's also the option of Triple Link Suspension (TLS). The cab of the 6M is an extremely pleasant and efficient place to work.



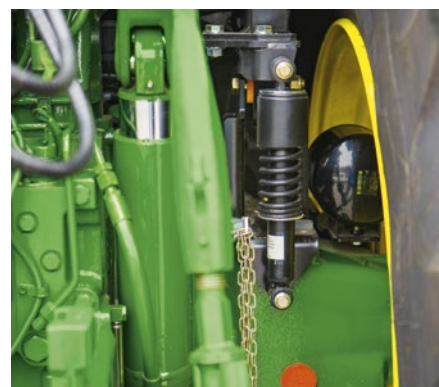




### TRIPLE LINK SUSPENSION (TLS)

This delivers optimum traction and in-field performance by putting up to 7% more power to the ground than a rigid axle. It automatically adjusts in response to changing load and draft conditions. TLS makes the going easier and more productive.

- Self-levelling, with +50 mm suspension travel
- Automatic adjustment of axle sensitivity and suspension rate
- Long draft member for optimised draft performance
- Synchronisation with hitch sensing system to compensate power hop effect under heavy pull conditions
- Additional brake discs in front axle hubs provide increased braking capacity



### Cab suspension (mechanical)

Keeping the operator relaxed and protected from irritating vibrations is achieved with our maintenance-free mechanical cab suspension.



## POWER UP. EMISSIONS DOWN

All John Deere engines are designed and engineered specifically for agricultural applications. The new 6M Series tractors are powered by our renowned 6.8 l and 4.5 l PowerTech engines, which have been revised to generate all the power you could need, while consuming less fuel.





### INCREASED POWER DENSITY

Newly designed heavy duty pistons allow a new level of power density meaning increased torque and power without compromising engine life.

### HIGH PERFORMING ENGINES

The electronically controlled engine with higher injection pressure allows a cleaner fuel burn and a more precise timing to improve performance and fuel consumption.

### DURABILITY & RELIABILITY

The PowerTech E engines are reliable and have been proven in the field for many years. They offer:

1. Forged steel connecting rods for increased durability
2. Dynamically balanced crankshaft constructed of heat-treated ductile iron for maximum strength
3. Removable wet cylinder liner for easy engine overhaul, longer engine life and high resale value

### OPERATOR COMFORT

Engine balancer shaft allows smoother operation and a gentler ride.





## EASY OPERATION WITH STRAIGHTFORWARD TECHNOLOGY

There's a versatile 6M tractor for everything you want to do. And to underline that all-round capability, there's now a choice of six available transmissions.

PowerReverser, PowerQuad Plus, AutoQuad Plus and AutoQuad Plus EcoShift are joined by CommandQuad Plus and CommandQuad Plus EcoShift. Both new transmissions deliver enhanced clutch-less automatic shifting for more operator convenience and higher productivity.

For speciality applications a creeper transmission is available for 6110M, 6125M, 6140M and 6155M versions.

Like all 6M core components, our transmissions are engineered in-house using highly efficient and reliable mechanical systems, making them especially easy even for inexperienced operators to master.



### **PowerQuad Plus**

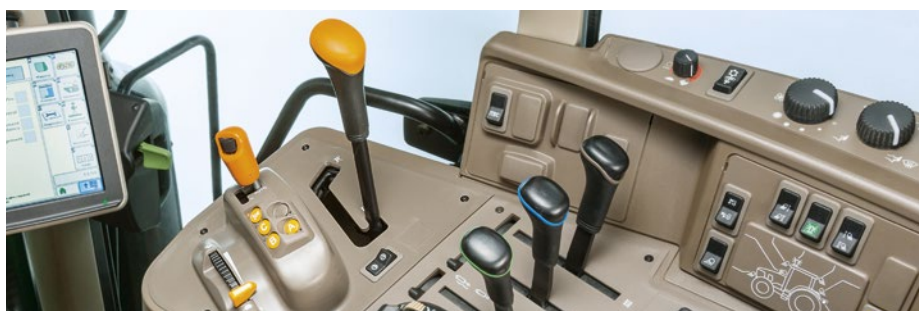
Three versions are available: 16/16, 20/20 and 24/24. All provide rapid shifting including speed matching when shifting between ranges. They are operated by a single range lever with declutch function and push-button gear selection. SoftShift technology keeps the changes smooth, even under load.





#### **AutoQuad Plus and AutoQuad Plus EcoShift**

All the benefits of PowrQuad Plus with the added convenience of automatic gear shifting. 20/20 and 24/24 versions are available. The EcoShift option delivers a higher transport speed (40 km/h) between only 1,580 and 1,680 rpm, reducing fuel consumption and emissions by up to 23%.



#### **CommandQuad Plus and CommanQuad Plus EcoShift**

For enhanced convenience and productivity CommandQuad Plus adds even more automatic capability. The smoothness of its autoclutch function – there's no need to press the clutch when stopping – and the performance of the powerfill brakes make 6M tractors perfect for loader work and when hooking up implements. Choose between 20 forward/20 reverse speeds or 24 forward/24 reverse speeds. The intuitive single control lever enables both manual and automatic speed selection, and is complemented by the left-hand reverser. The EcoShift version with a transport speed of 40 km/h operates at engine speeds of only 1,600 rpm.



## MUSCLE POWER ON TAP

Outstanding versatility requires an outstanding hydraulics system. 6M tractors are equipped with the same rear hitch geometry as our premium 6R Series, and can be specified with the same high lift capacity. The Pressure and Flow Compensated system (PFC) is capable of producing a maximum flow of 114 l/min whenever the system loading requires it. When the flow is no longer needed, the system returns to the “no flow” stand-by mode. Not only does this improve both fuel efficiency and implement performance, it also enhances steering response.







A simpler designed Pressure Compensated system (PC) with 80 l/min is also available for owners with tasks that are less arduous.

6M Series hydraulic systems power up to 4 Selective Control Valves (SCV) to operate rear-mounted implements as well as the integrated front hitch. Mechanically activated valves (M-ICV) and electronically activated valves (E-ICV) enable easy joystick control of John Deere front loaders.



#### **iTEC Basic headland management system**

Intelligent Total Equipment Control Basic helps the operator co-ordinate the control of implements when executing headland turns.



#### **SCV stack**

Easily accessed between the rear hitch rails, the SCV stack groups together up to 4 SCVs, Power Beyond couplers and the Pressure-Free Return circuit valve for convenient operation.





The acknowledged versatility of the 6M Series is complemented by our available hitches, drawbars and PTOs and enhanced by the convenience of ISOBUS connectivity with a wide range of productive implements. The new rear hitch is identical with that on our premium 6R tractors, and delivers the same maximum lift capacity of 8,500 kg. Available PTO speed options are 540/1,000 rpm or 540/540E/1,000 rpm.

Versatility can be extended with the integrated front hitch that is perfect for carrying ballast and front implement operation. It can also be combined with the integrated John Deere front PTO, which is fully compatible with John Deere front loaders. Our three-point hitches feature sway stabilizers and hitch damping for enhanced ride stability, and iTEC Basic Headland Management System for coordinated implement control.

Whether you're working with hitches, drawbar or PTO, you can be assured that all of these John Deere components are engineered for durability and ease of operation. Good news for the efficiency and productivity of your operations.



# WHATEVER YOU'RE TAKING ON, YOUR 6M IS READY



## Rear hitch

The sturdy rear hitch, with a maximum lift capacity of up to 8,500 kg\* can easily handle the heaviest of implements.



## Integrated front hitch (with PTO)

Make the most of the hydraulic power generated by your 6M tractor with the fully integrated front hitch. It provides up to 4,000 kg\* maximum lift capacity, and is also available as a field installation kit from your dealer. The John Deere front hitch includes the following features:

- Front SCV coupler
- Double-acting cylinders for both lift- and down-pressure
- Full compatibility with John Deere front loaders

\*maximum lift capacity at hooks

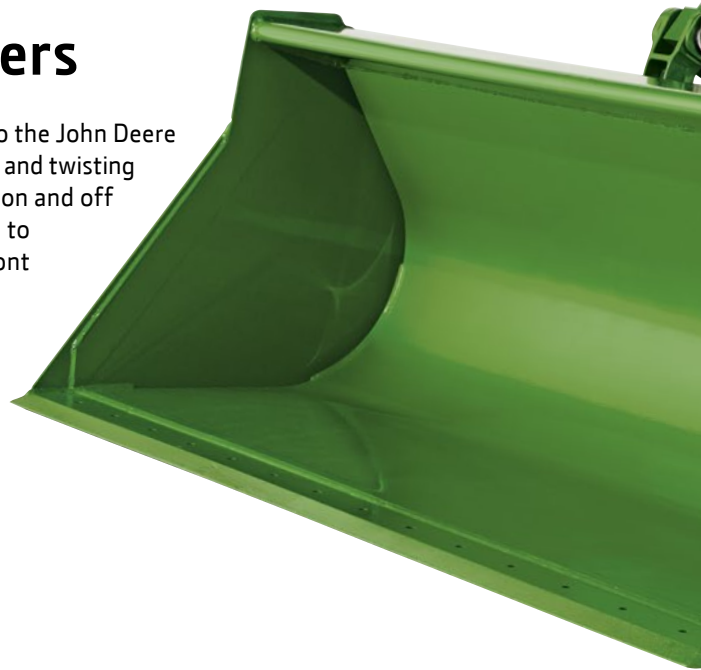




## Raising the game: John Deere R Series front loaders

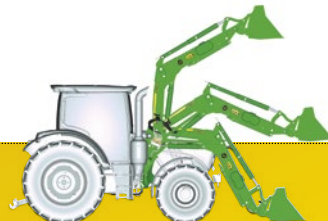
A 6M tractor is the perfect platform for heavy front loader work, thanks to the John Deere full frame design. The sturdy double backbone construction resists stresses and twisting forces caused by uneven loading, making the 6M a most stable performer on and off the farm. The durable, oil-cooled PermaClutch 2 in every 6M is engineered to manage the multiple directional changes that are typical of continuous front loader operations.

John Deere front loaders are designed, manufactured and tested to the same stringent standards as our tractors. They fit the 6M tractor perfectly, are compatible with the John Deere front hitch, work with reliable precision and durability, and allow superb all-round visibility for accurate positioning. A close-fitting hood guard is available to protect the front end from the possibility of damage during loader operation.



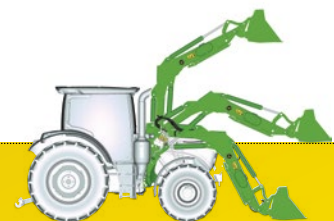
### Non Self-Levelling (NSL)

Ideal for working with grain and similar bulk matter.



### Mechanical Self-Levelling (MSL)

Capable of dealing with all kinds of heavy work. Levelling is maintained automatically.



### Hydraulic Self-Levelling (HSL)

Perfect for handling manure, silage, bulk materials, pallets and any other heavy-duty applications. Levelling is maintained automatically.





## BUILT FOR A LONG WORKING LIFE

Loads generated by operating a front loader are transferred to the middle of the rugged full frame by cast iron mounting frames for optimal weight distribution whether loaded or empty. The mounting frame design and loader kinematics are optimised to bear the heaviest of loads with ease, without obstructing access to tractor maintenance points or the front wheel steering angle. The front axle is constructed from three sturdy components, resulting in faster, easier turns, higher payload capability and very high resistance to severe stresses. Pivot points benefit from an eccentric design while the new bushings are made to manage heavy, directional loads, and are easily replaceable. The high quality of John Deere front loaders is reflected in their long guarantees and infrequent service intervals.



1

### Underslung levelling link

The ingenious geometry of our front loader linkage brings several practical advantages. Because the levelling link is underslung it cannot impair the operator's view. It also conveys more power along the loader shafts, provides easy access for servicing and allows greater steering angles.



2

### Automatic mast latch

Mounting our front loaders could not be quicker, safer or more convenient thanks to the built-in automatic mast latch. You need to leave the cab only once. Separating tractor and loader is just as easy.



3

### Automatic implement latch

Whether you're working with buckets, forks, grapples, or bale spikes, our auto latch system allows you to automatically lock any implement. Locking is faster because complete rollback is not necessary. Unlocking is easy too, with the conveniently located release handle.



# BOOSTING PRODUCTIVITY AND EASE OF OPERATION



There's a range of optional solutions that help you access all the built-in benefits of your John Deere front loader. They save valuable time, boost convenience and reduce operator fatigue.



**Combi Euro/MX  
Carrier**



**Combi Euro/SMS  
Carrier**



## Carrier choices

John Deere offers a unique combi-system which handles both Euro standard and alternative coupling standards within one carrier.

The **Standard Euro Carrier**, delivered with your John Deere front loader ex-factory, fits all Euro implements that you may already have. The **Combi Euro /SMS Carrier** works equally well with Euro and SMS implements. For ultimate convenience, our **Combi Euro/MX Carrier** is all that's required to work in the Euro or MX configuration. Re-configuration can be achieved manually but without tools within one minute.

## Hydraulic implement unlatching

A cab-mounted switch allows the operator to unlatch an implement without leaving the cab. Manual unlatching can still be carried out if required. It's a straightforward system, utilising a gas accumulator/oil pressure combination to lock and unlock.



**TRACTOR/LOADER COMPATIBILITY**

There is a choice of two front loader sizes for the 6110M, 6125M, 6140M and 6155M. For the 6175M and the 6195M, John Deere offers the 663R loader for a perfect fit. Whether the loader is electronically or mechanically controlled, it is operated by a dedicated valve. All loaders can be retro-fitted.

	623R	643R	663R
6110M, 6125M	●	●	
6140M, 6155M		●	●
6175M, 6195M			●



**Loader suspension**

The smooth operation of your John Deere tractor can be enhanced with our front loader suspension unit. Its effective damping protects the material you are handling as well as your tractor, and improves operator comfort on the road. It can be activated/deactivated from within the cab by a button, such as that on the joystick.

**Loader lights**

Purpose-built John Deere loader lights provide the consistent and reliable illumination that you need when working with a front loader in darkness or poor visibility. Being loader-mounted, the lamps follow every movement of the loader, fit perfectly and also offer exceptional value.

**Mechanical Loader Control Valve (M-LCV)**

M-LCV provides convenient, single-lever, joystick-control. Depending on tractor model, additional joystick functions include GSS, diverter valves and loader suspension. See table for compatibility.

**Electronic joystick**

Easily the most comfortable way to operate a front loader, the electronic joystick manages up to 5 functions independently and is mounted on the redesigned right-hand console. The suspension button is located just below the grip.





# ON TRACK FOR HIGHER PRODUCTIVITY

Precision farming starts with guidance. It points the way to measurable reductions in the volumes of seed, fertilizer and chemicals required, by positioning your machines with reliable accuracy. And the enhanced productivity and operator comfort are matched by lower fuel consumption.

Automatically record all your field applications on your GreenStar 3 2630 Display: From tillage to seeding, spraying and fertilizer spreading, you can document precisely the details of each operation. Then you can transfer the data to the Operations Center on MyJohnDeere.com.

## STARFIRE 6000 RECEIVER

Accessing John Deere's precision farming solutions starts with the new StarFire 6000 receiver. Capabilities include better signal stability for maximum uptime and new SF3 accuracy delivering in-season repeatability. That means for you: the receiver always keeps you on track whatever the conditions are. And with the new SF3 signal you get repeatable results – no guidance line or boundary drift – throughout one season. Which adds even more precision and productivity.

The StarFire 6000 receiver works seamlessly with all John Deere guidance systems and all accuracy levels (SF1, SF3, Mobile and Radio RTK).



**RTK with 2.5 cm** pass-to-pass accuracy, featuring long-term repeatability including 14 days RTK Extend if you lose line of sight. The ideal solution for Controlled Traffic Farming.

**New SF3 enabling 3 cm** pass-to-pass accuracy and in-season repeatability.

**Improved SF1 with 15 cm** pass-to-pass accuracy, free of charge





## GREENSTAR DISPLAYS

Our displays are designed to provide operators with effortless fingertip control and visual guidance for more accurate steering. They optimise the performance of both man and machine, improving productivity and minimising unnecessary fuel consumption. All are ISOBUS enabled. The GreenStar 2 1800 display is the perfect entry-level guidance and ISOBUS implement control. It has a scroll wheel for easy navigation and ten mapped letter keys for quick, one-touch operation. Installation is very straightforward: the set-up wizard ensures that you'll have the display up and running after following a few simple steps. For more precision, it can be upgraded to run automatic guidance and section control for John Deere implements.

The full-colour GreenStar 3 2630 display provides full monitoring and control over all the Agricultural Management Solutions you use in your 6M Series tractor. The display also supports advanced telematics solutions such as John Deere Remote Control Display Access and John Deere Wireless Data Transfer. With that you can connect the GreenStar 2630 with the Operations Center on MyJohnDeere.com to upload, view and manage the field information collected, e.g. as-applied maps. In the same way you can prepare setup data in the Operations Center and send it to the GreenStar 2630 to ensure proper documentation in the next season.

## AUTOTRAC AUTOMATIC GUIDANCE

All 6M Series tractors can be specified with AutoTrac, our integrated automatic guidance system. Complete with all the advantages that automatic guidance can offer, the integrated AutoTrac system is destined to raise your productivity by reducing input costs and boosting efficiency. AutoTrac masters both straight and curved tracks and works without problems even in low visibility situations, reducing skips and overlaps, saving fertilizer, seed and fuel. You could save up to 8% on your input costs\*.



# TELEMATICS: OPTIMISING YOUR OPERATIONS

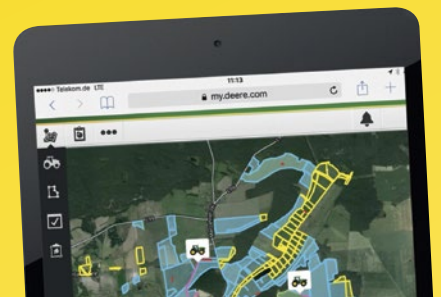
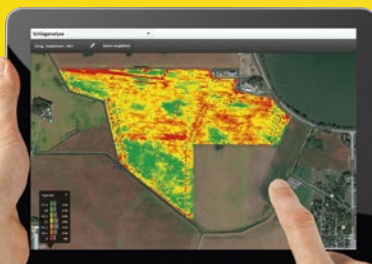
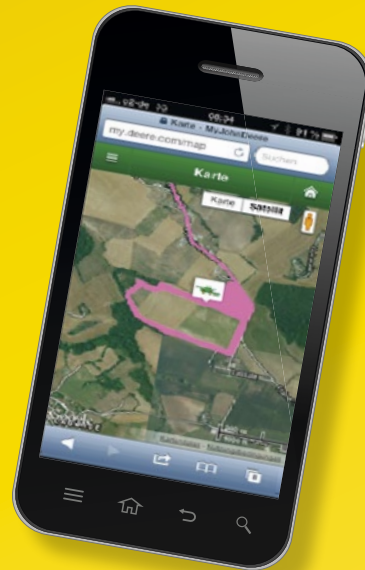
Our agricultural John Deere Operations Center on MyJohnDeere.com, unlocks the full potential of your operations. You can monitor and run your fleet of machines, stay up to date with weather forecasts for more efficient job planning and manage your land, allocate your equipment, track the work progress of your machines and view what has been achieved over the day. All from a central location and with all data in one place. With John Deere Wireless Data Transfer you can even send data “over the air” between Operations Center and the GreenStar 3 2630 display, eliminating the risk of data loss, and saving time on data transfer. You can log on to Operations Center from any PC or mobile device for an immediate overview of your on-going operations and share data securely with your dealer, other business partners, trusted advisors or customers.



## Intelligent fleet management and control

John Deere Operations Center on MyJohnDeere.com opens up the smartest new way to plan, run and manage all your operations. Intuitive operation makes navigation very easy, with all relevant operational information clearly displayed on the map. It maintains an invaluable connection between you, your machines and your land, and is your portal for accessing machine performance and health monitoring data via JDLink.

Getting connected could not be easier. You can create your account at no cost whatsoever, then simply log on to new levels of efficiency and productivity.





# BUY YOUR UP-TIME SOLUTION: POWERGARD

## Maintenance and repair plans

In today's farming environment machine efficiency and predictable costs are the key to running a successful farming business.

Now you can purchase John Deere equipment with more confidence than ever. John Deere PowerGard is a straight forward solution to your equipment servicing and repair work designed to help you budget your operating cost.

With flexible coverage options PowerGard is the tailored aftermarket solution to keep your machine running at peak performance and control your operating costs.

## PowerGard Maintenance Plan

– Ensures your machine's reliability

## PowerGard Protection Plan

– Your entrance to comprehensive machine protection

## PowerGard Protection Plus Plan

– Ultimate financial peace of mind for your investment

## Your benefits

– Maximum Uptime. Security.



COMPONENTS COVERED*		POWERGARD PROTECTION	POWERGARD PROTECTION PLUS
Engine	Basic Engine	✓	✓
Engine Auxiliaries	Intake & Exhaust System		✓
	Engine Electrical Parts		✓
	Engine Cooling System		✓
	Fuel Supply System		✓
Electrical	Electrical Systems		✓
Power Train	Transmission, Differential, PTO, Axles and Final Drives	✓	✓
	Transmission Oil Coolers		✓
Steering and Brakes	Wet Brake Components	✓	✓
	Brake Systems		✓
	Steering	✓	✓
	Steering Cylinders		✓
Hydraulics	Hydraulic System		✓
Frame, Members, Miscellaneous	Frame	✓	✓
	Non-driven Axles Hubs & Bearings	✓	✓
Operator's Station	Monitors		✓
	Operator Controls		✓
	Operator Station (Cab, Platform)		✓

\*Covered components may vary according to machine options.



## ADDING VALUE

We're all individuals, and we all have our personal preferences and priorities. So we've made it easy to put your own personal stamp on your tractor. Configuring your 6M to fit the needs of your business with genuine John Deere attachments will increase convenience and productivity – and make a great machine even better.

All genuine John Deere attachments are manufactured to the same demanding standards as all our original equipment, so longevity and a perfect fit are guaranteed.



### Accessory mounting brackets

Available for mounting monitors, control boxes, phones, etc. in one convenient location, all within easy reach from the operators seat. The bracket is specially designed for your 6M, it mounts to the right-hand C-post.



### Universal accessory mounting brackets

Can be combined with the optional mobile phone mount bracket kit and the tablet mount kit. The universal design of this bracket allows mounting e.g. on the A-post or C-post.



### Floor mats

Reduce noise and protect the floorboard. They are pressure washer resistant and can easily be cleaned. Fit perfectly in your cab.





Add more  **Do More**

**Ballast solutions**

Intelligent ballasting optimises tractor performance by bringing more power to the ground, reducing fuel consumption and improving traction and ride comfort.



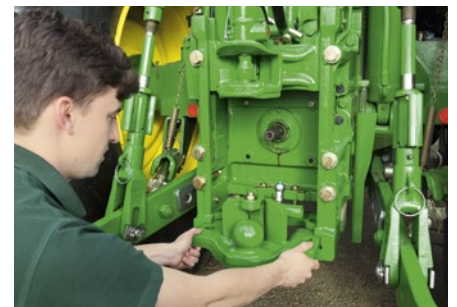
**Seat covers**

John Deere seats are both hardwearing and comfortable, but our made-to-measure seat-covers in high quality leatherette or reinforced cloth help preserve that showroom finish.



**Sunshades and internal, external rear view mirrors**

Visibility enhancements to ensure the best view at all times no matter what the job or weather conditions. Sunshades are available for your front and rear window.



**Choice of hitches**

Extend your 6Ms versatility with a great variety of hitch solutions offering high load capacities and optimizing pulling abilities. They can also easily be combined with our forced steering systems.



# Specifications

MODEL	6110M	6125M	6140M	6155M	6175M	6195M
<b>ENGINE PERFORMANCE</b>						
Rated power (97/68EC), hp (kW)	110 (81)	125 (92)	140 (103)	155 (114)	175 (129)	195 (143)
Max. power (97/68EC) hp (kW)	116 (86)	132 (97)	148 (109)	164 (121)	185 (136)	206 (152)
Constant power range, rpm	2,100-1,600					
Torque reserve, % percentage	35					
Maximum torque, Nm (at 1,500 engine rpm)	497	522	632	700	790	880
Rated speed, rpm	2,100					
Manufacturer	John Deere Power Systems					
Type	PowerTech E					
Engine air filter	PowerCore® G2 air filter with pre-cleaning					
Aspiration	Fixed geometry turbocharger					
Cylinders / Displacement	4/4.5 l			6/6.8 l		
Cooling system	Distributed cooling system with temperature controlled viscous fan drive					
Fuel injection system & control	High pressure common rail system with up to 1500 bar injection pressure, electronically controlled					
<b>TRANSMISSIONS</b>						
<b>PowrReverser</b>						
16/16 2.4 - 30 km/h	•	•				
<b>PowrQuad Plus</b>						
16/16 2.4 - 30 km/h	•	•	•			
16/16 3.2 - 38 km/h	•	•				
20/20 2.5 - 40 km/h				•	•	•
24/24 1.4 - 40 km/h	•	•	•			
<b>AutoQuad Plus</b>						
20/20 2.5 - 40 km/h				•	•	•
24/24 1.4 - 40 km/h	•	•	•			
<b>AutoQuad Plus EcoShift</b>						
20/20 2.5 - 40 km/h				•	•	•
24/24 1.4 - 40 km/h	•	•	•			
<b>CommandQuad Plus</b>						
20/20 2.5 - 40 km/h				•	•	•
24/24 1.4 - 40 km/h	•	•	•			
<b>CommandQuad Plus EcoShift</b>						
20/20 2.5 - 40 km/h				•	•	•
24/24 1.4 - 40 km/h	•	•	•			
Creeper (PowrReverser, PowrQuad Plus, AutoQuad Plus and AutoQuad Plus EcoShift)	•	•	•	•		
<b>AXLES</b>						
Suspended front axle (option)	Triple Link Suspension (TLS) MFWD Axle, hydro-pneumatic, permanently active, triple link, self-levelling, load adjusting suspension					
Suspension range with TLS Plus	100 mm suspension range					
Engagement front differential lock	Self-locking differential					
Engagement rear differential lock	Electro-hydraulic with oil cooled clutch					
Rear axle	Flange axle					
<b>STEERING</b>						
Type	Dynamic load sensing, hydrostatic, flow metering					
<b>HYDRAULIC SYSTEM</b>						
Type	Pressure Compensated (PC) / Pressure & Flow Compensated (PFC) system with load sensing function			Pressure & Flow Compensated (PFC) system with load sensing function		
Flow at rated engine speed base/option, l/min	80/114			114		
Selective control valves (rear/ mid)	Up to 4+3					
Power beyond	Optional					
Oil take out capacity with overfill, l	25			35		
Oil take out capacity with additional oil reservoir, l	37			47		



MODEL	6110M	6125M	6140M	6155M	6175M	6195M
<b>3-POINT HITCH – Rear</b>						
Type	Electronic lower link sensing; load & depth control, infinite mix, float					
Category	II/IIIN		IIIN/III	III		
Maximum lift capacity at hooks, kg (base/option)	3,950/5,300	4,600/6,000	6,000/6,800	7,200/8,100	8,500	8,500
Lift capacity through full lift range (OECD 610 mm), kg (base/option)	2,500/3,400	2,900/3,800	3,800/4,300	3,700/4,200	4,850	4,850
Lift capacity through full lift range (OECD 1,800 mm), kg (base/option)	1,550/2,100	1,800/2,350	2,350/2,650	2,800/3,200	3,400	3,400
<b>3-POINT HITCH – Front, optional</b>						
Type	Front hitch controlled by rear SCV					
Category	IIIN					
Maximum lift capacity at hooks, kg	4,000					
Lift capacity through full lift range (OECD at the hooks), kg	3,300					
<b>REAR PTO</b>						
	Electro-hydraulically engaged, oil cooled, multi-disc design					
Engine rpm at rated PTO speeds with 540/1000 option	1,967/1,962			1,987/2,000	1,950/1,950	
Engine rpm at rated PTO speeds with 540/540E/1000 option	1,967/1,496/1,962			1,987/1,753/2,000	1,950/1,721/1,950	
<b>FRONT PTO, optional</b>						
Type	Electro-hydraulically engaged, oil cooled					
Engine speed at rated PTO speed (1,000), rpm	1,969					
<b>CAB</b>						
Specifications	310° all-round vision, telescoping and tiltable steering column/wheel					
Suspension (option)	Mechanical cab suspension MCS					
Noise level at operator's ear, dB(A)	71					
Cab glass area, m <sup>2</sup>	4.79					
Display	Integrated into dashboard					
<b>MISCELLANEOUS</b>						
AutoTrac Ready	Optional					
ISOBUS implement connection	Optional					
<b>CAPACITIES</b>						
Fuel Tank, l	260	260	345	345	390	390
<b>DIMENSIONS AND WEIGHTS</b>						
Wheelbase, mm	2,580		2,765		2,800	
Width x Height x Length, mm	2,490 x 2,880 x 4,485		2,490 x 2,930 x 4,730	2,490 x 2,970 x 4,730	2,550 x 3,100 x 4,990	
<i>Measured with flanged axle, up to cab roof, from front weight support to horizontal draft link hooks and with max. front tires/ max. rear tire sizes.</i>						
Ground clearance, mm	490		530		545	
<i>Measured at center of front axle, using max. front and max. rear tire sizes</i>						
Shipping weight, kg	5,800		6,200	6,700	7,500	
<i>Measured with average specifications</i>						
Maximum permissible gross weight, kg	8,650	9,150	10,000	11,000	12,300	12,300
<b>TIRE SIZES</b>						
Front tire sizes, max. available (diameter in cm)	540/65R24 (134)		540/65R28 (144)		600/65 R28 (152)	
Rear tire sizes, max. available (diameter in cm)	600/65R38 (178)		650/65R38 (185)		710/70 R38 (200)	



The American Society of Agricultural and Biological Engineers is an educational and scientific organization dedicated to the advancement of engineering applicable to agricultural, food, and biological systems. Founded in 1907 and headquartered in St. Joseph, Michigan, ASABE comprises 8,000 members in more than 100 countries.



## Specifications

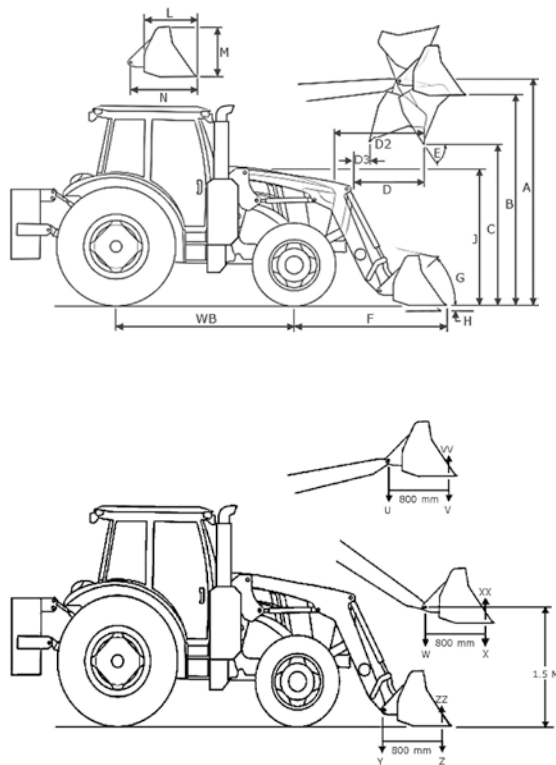
TRACTOR MODEL			6110M		6125M	
FRONT TIRE			480/70R24		480/70R24	
REAR TIRE			520/70R38		520/70R38	
WHEELBASE		(WB)	2,580		2,580	
PUMP CAPACITY			114		114	
RATED PRESSURE			2,900		2,900	
LOADER			623R NSL		623R MSL	
BUCKET			Standard Bucket 1,850 mm		Standard Bucket 1,850 mm	
BUCKET WEIGHT			520		520	
LIFT CAPACITY*			236		236	
MEASURED @ PIVOT		(U)	5,781		5,265	
@ FULL HIEGHT		(V)	3,874		5,009	
MEASURED @ 800 mm AHEAD OF PIVOT			1,757		2,272	
LIFT CAPACITY*		(W)	6,016		6,023	
@ 59 in (1.5 m)		(X)	4,632		5,692	
MEASURED @ 800 mm AHEAD OF PIVOT			2,101		2,582	
BOOM		(Y)	6,263		6,733	
MEASURED @ PIVOT			2,841		3,054	
BREAKOUT		(Z)	4,553		5,730	
MEASURED @ 800 mm AHEAD OF PIVOT			2,065		2,599	
BUCKET		(VV)	4,978		5,137	
@ MAXIMUM HEIGHT			2,258		2,330	
ROLLBACK FORCE		(XX)	9,367		9,407	
@ 59 in (1.5 m) LIFT HEIGHT			4,249		4,267	
@ GROUND LEVEL		(ZZ)	9,608		9,570	
MAXIMUM LIFT HEIGHT*		(A)	162		162	
@ FULL HEIGHT – BUCKET LEVEL		(B)	4,124		4,124	
CLEARANCE*		(C)	152		152	
@ FULL HEIGHT – BUCKET DUMPED			3,854		3,854	
OVERALL LENGTH		(WB+F)	122		122	
DIGGING DEPTH*		(H)	202		202	
REACH*		(D)	-4		-4	
@ MAXIMUM HEIGHT			-91		-91	
@ GROUND – BUCKET LEVEL		(F)	30		30	
DUMP ANGLE @ FULL HEIGHT		(E)	759		759	
ROLLBACK @ GROUND		(G)	100		100	
DUMP ANGLE @ GROUND			2,548		2,548	
BUCKET ANGLES			-59		-59	
LOADER RAISE			48		48	
LOADER LOWER			-151		-96	
BUCKET DUMP			3.43		3.37	
BUCKET ROLLBACK			2.57		2.53	
CYCLE TIMES			2.65		1.81	
			1.81		1.81	

TRACTOR MODEL			6110M		6125M	
FRONT TIRE			480/70R24		480/70R24	
REAR TIRE			520/70R38		520/70R38	
WHEELBASE		(WB)	2,580		2,580	
PUMP CAPACITY			114		114	
RATED PRESSURE			2,900		2,900	
LOADER			643R NSL		643R MSL	
BUCKET			HEAVY DUTY 2,200 mm		HEAVY DUTY 2,200 mm	
BUCKET WEIGHT			683		683	
LIFT CAPACITY*			310		310	
MEASURED @ PIVOT		(U)	5,582		5,013	
@ FULL HIEGHT		(V)	3,902		5,137	
MEASURED @ 800 mm AHEAD OF PIVOT			1,770		2,330	
LIFT CAPACITY*		(W)	5,891		5,789	
@ 59 in (1.5 m)		(X)	4,614		5,465	
MEASURED @ 800 mm AHEAD OF PIVOT			2,093		2,479	
BOOM		(Y)	6,241		6,548	
MEASURED @ PIVOT			2,831		2,970	
BREAKOUT		(Z)	4,698		5,728	
MEASURED @ 800 mm AHEAD OF PIVOT			2,131		2,598	
BUCKET		(VV)	5,247		5,512	
@ MAXIMUM HEIGHT			2,380		2,500	
ROLLBACK FORCE		(XX)	9,328		9,566	
@ 59 in (1.5 m) LIFT HEIGHT			4,231		4,339	
@ GROUND LEVEL		(ZZ)	9,740		9,656	
MAXIMUM LIFT HEIGHT*		(A)	163		163	
@ FULL HEIGHT – BUCKET LEVEL		(B)	4,151		4,151	
CLEARANCE*		(C)	153		153	
@ FULL HEIGHT – BUCKET DUMPED			3,881		3,881	
OVERALL LENGTH		(WB+F)	123		122	
DIGGING DEPTH*		(H)	214		214	
REACH*		(D)	-3		-3	
@ MAXIMUM HEIGHT			-84		-86	
@ GROUND – BUCKET LEVEL		(F)	39		39	
DUMP ANGLE @ FULL HEIGHT		(E)	982		982	
ROLLBACK @ GROUND		(G)	112		112	
DUMP ANGLE @ GROUND			2,844		2,844	
BUCKET ANGLES			-56		-60	
LOADER RAISE			48		48	
LOADER LOWER			-140		-119	
BUCKET DUMP			3.50		3.31	
BUCKET ROLLBACK			2.63		2.48	
CYCLE TIMES			2.65		1.81	
			1.81		1.81	

\*The values may vary according to the tractor and loader settings/configuration.



6140M/6155M		6140M/6155M	
480/70R28		480/70R28	
580/70R38		580/70R38	
2,765		2,765	
114		114	
2,900		2,900	
643R NSL		643R MSL	
HEAVY DUTY 2,200 mm		HEAVY DUTY 2,200 mm	
683	310	683	310
5,712	2,591	4,941	2,241
4,006	1,817	5,024	2,279
6,146	2,788	5,878	2,666
4,806	2,180	5,516	2,502
6,493	2,945	6,684	3,032
4,824	2,188	5,754	2,610
5,399	2,449	5,622	2,550
9,577	4,344	9,636	4,371
9,758	4,426	9,632	4,369
169	4,300	169	4,300
159	4,030	159	4,030
129	3,281	128	3,260
217	5,503	217	5,503
-6	-145	-6	-145
33	841	33	841
108	2,738	108	2,738
-56		-60	
48		48	
-144		-117	
3.70		3.52	
2.78		2.64	
2.65		1.81	
1.81		1.81	



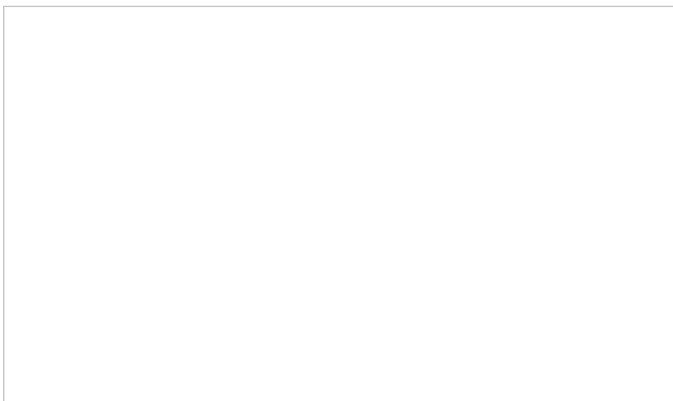
6140M/6155M		6140M/6155M		6175M/6195M		6175M/6195M	
540/65R28		540/65R28		600/65R28		600/65R28	
650/65R38		650/65R38		710/70R38		710/70R38	
2,765		2,765		2,800		2,800	
114		114		114		114	
2,900		2,900		2,900		2,900	
663R NSL		663R MSL		663R NSL		663R MSL	
HEAVY DUTY 2,450 mm		HEAVY DUTY 2,450 mm		HEAVY DUTY 2,450 mm		HEAVY DUTY 2,450 mm	
783	355	783	355	783	355	783	355
5,602	2,541	5,051	2,291	5,650	2,563	5,097	2,312
4,065	1,844	5,130	2,327	4,094	1,857	5,185	2,352
6,142	2,786	6,180	2,803	6,144	2,787	6,191	2,808
4,872	2,210	5,820	2,640	4,874	2,211	5,825	2,642
6,493	2,945	7,083	3,213	6,455	2,928	7,064	3,204
4,921	2,232	6,191	2,808	4,888	2,217	6,160	2,794
6,074	2,755	6,074	2,755	6,049	2,744	6,049	2,744
9,972	4,523	9,960	4,518	9,978	4,526	9,967	4,521
10,040	4,554	10,009	4,540	10,031	4,550	10,005	4,538
177	4,495	177	4,495	178	4,520	178	4,520
166	4,225	166	4,225	167	4,249	167	4,249
136	3,466	136	3,453	137	3,492	137	3,480
222	5,651	222	5,651	223	5,668	223	5,668
-4	-112	-4	-112	-3	-85	-3	-85
40	1,026	40	1,026	40	1,004	40	1,004
114	2,886	114	2,886	113	2,868	113	2,868
-58		-60		-58		-60	
47		48		48		48	
-143		-114		-143		-114	
3.98		3.91		3.98		3.91	
2.75		2.70		2.75		2.70	
2.65		1.81		2.65		1.81	
1.81		1.81		1.81		1.81	



# NOTHING RUNS LIKE A DEERE.

Together with the John Deere dealership network, we are committed to raising the performance of your operations, maximising uptime and reducing operating costs. So we never stop investing in products and technologies that are quality-built and state-of-the-art. Our capable dealer technicians – who are all John Deere trained – are familiar with every nut, bolt and bite in your equipment, and skilled at diagnosing any potential problems.

You can count on your partnership with us and with our dealer network. After over 175 years in the farm equipment business, we can be sure that together we're better.



John Deere Financial – A range of finance options as powerful as our products. Contact your John Deere dealer for a comprehensive range of finance options to suit the specific needs of your business. Not available in all countries please consult your local dealer.

This literature has been compiled for worldwide circulation. While general information, pictures and descriptions are provided, some illustrations and text may include finance, credit, insurance, product options and accessories not available in all regions. Please contact your local dealer for details. John Deere reserves the right to change specification and design of products described in this literature without notice. The green and yellow colour scheme, the leaping deer logo and the JOHN DEERE word mark are trademarks of Deere & Company.

[JohnDeere.com](http://JohnDeere.com)