


C1 200 COMBINE

BUILT FOR RESULTS



JOHN DEERE



Unlike most other combines in this class, based on a walker design, the C1 200 leverages a 3300 mm long separator rotor with an active separation.

- ✓ Ultimate Productivity
- ✓ Exceptional Grain Quality
- ✓ Minimal Losses



BUILD FOR RESULTS

THE NEW C1 200

When you bring a new C1 200 into your business, you do not just buy a new combine. You make an investment into better business results.

CONTENTS

The New C1 200.....	2
Highlights.....	4
Front End Equipment	6
Threshing & Separation	8
Cleaning	10
Grain Handling.....	11
Residue Management.....	12
Engine	13
Drive Train	14
Operator Station	16
Service & Maintenance.....	18
Specifications	19

HARVEST LIKE NEVER BEFORE

HIGHLIGHTS

Expect superior harvesting performance in corn, small grains, rice, soybean, sorghum, millet, rapeseed and a multitude of other crops.

You'll be harvesting excellent grain quality at minimum losses in whatever conditions you may find yourself in.



1. Comfortable Cab

Enjoy the large 2.3 m³ space cab with multi-functional joystick, corner post display and unobstructed view.

3. Superior Grain Quality

The gentle threshing with less crop to metal but more crop to crop rubbing ensures you harvest superior grain quality with minimal to no broken grain.

2. Multi-Crop Conversion

Whatever your crop is, whatever your local conditions look like, you'll be able to perfectly tailor the CI 200 to your local needs.

4. Minimal Grain Losses

The 3300 mm long tine separator, provides a huge active separation area. Its centrifugal forces ensure thorough separation to the last kernel.



5. Extra Fast Top-Unloading

70% faster unloading speed compared to previous model, reaches up to 75 l/s.
4.1 m unloading height provides ample of clearance for safe on-the-go unloading.

7. Powerful 6 Cylinder John Deere Engine

When crop gets dense, weeds occur, moisture picks up, operate in hilly terrain, the combine will deliver up to 185 hp from the turbocharged 6.8 l John Deere 6-cylinder engine.

6. Large Grain Tank Capacity

The high-capacity 5,500 l grain tank with a new folding mechanism reduces the frequency of unloading cycles. It reduces unnecessary in-field travel and lets you stay more productive.

8. Steel Track Ready

When ultimate flotation and traction is required – e.g. for rice paddy field harvest. The CI 200 can also be ordered “Steel Track Ready”. This allows easy retrofit of such and ensures perfect compatibility.



START WITH A CLEAN CUT

FRONT END EQUIPMENT

Small improvements in grain yields bring big increases in profits, while harvesting conditions are often unique. That's why John Deere pays a lot of attention to offer you the right headers.

Excellent Header Visibility

The long C1 200 feederhouse puts the action of cutting / picking right into your vision, without you having to strain your neck.

Crop flow is also smoother, reducing grain and straw damage.

Smooth & Efficient Feeding

The 1040 mm wide feederhouse features a height-adjustable floating feed drum an adjustable chain tension that you can perfectly adjust to your needs.

200R/F Cutting Width		200C/ 212P	
215R/F	4.6 m	205C	5 rows (762 mm single row spacing)
218R/F	5.3 m	206C	6 rows (762 mm single row spacing)
222R/F	6.6 m	212P	3.7 m



200R

This rigid head, with extra strong, easy to replace 3 mm thick bolted knives is built for extra wear resistance and delivers uninterrupted crop flow into the combine even in tough, wet conditions.



212P

This belt pickup gives you extra capacity to harvest windrow crops even when lines are not perfectly straight and swathed up.



200F

Equipped with a flexible cutterbar, this head is perfectly suited to harvest crop that requires a cut close to the ground, like soybeans and peas. By locking the cutterbar into the rigid position it can also be used for wheat or other small grains and oilseeds.



200C

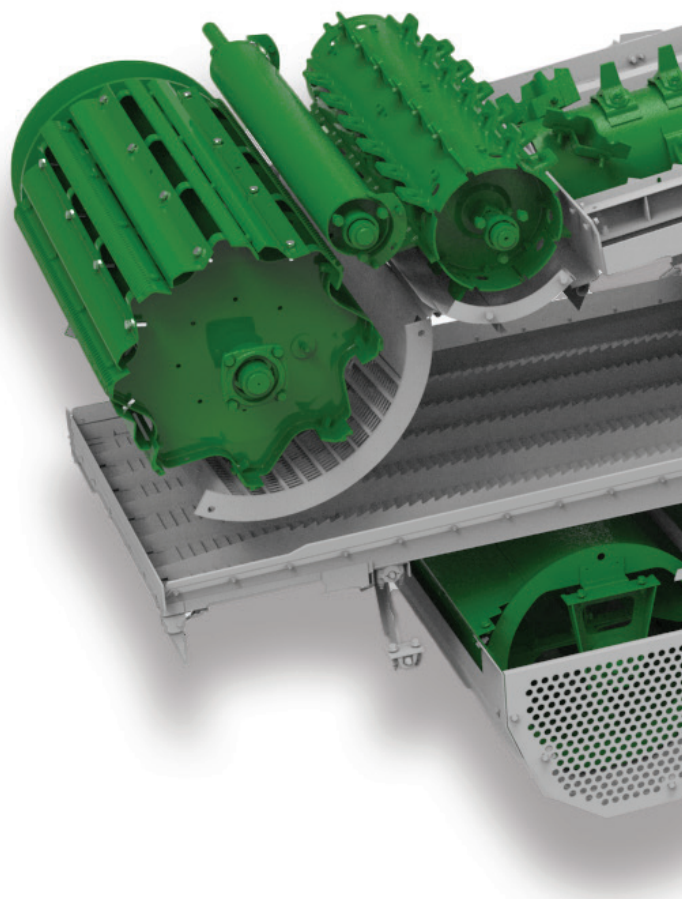
To feed a C1 200, it may take up to a 6 rows corn head even in high yielding crop. Clean removal of the cobs and smooth feeding with minimal losses make the 200C corn head an excellent choice.

GENTLE & THOROUGH **THRESHING & SEPARATION**

The C1 200 delivers outstanding productivity. The powerful 6-cylinder engine is just the start. Its very smooth crop flow, large 610 mm diameter (rasp-bar type) threshing cylinder with 8 rasp bars and 118° concave wrap angle only add to it.

The 3300 mm long separator rotor is what sets this combine apart. Perfect separation keeps your grain in the machine and residue in the field.

The eccentric rotor helps to minimize grain damage as the crop is rubbing against itself and not on metal.

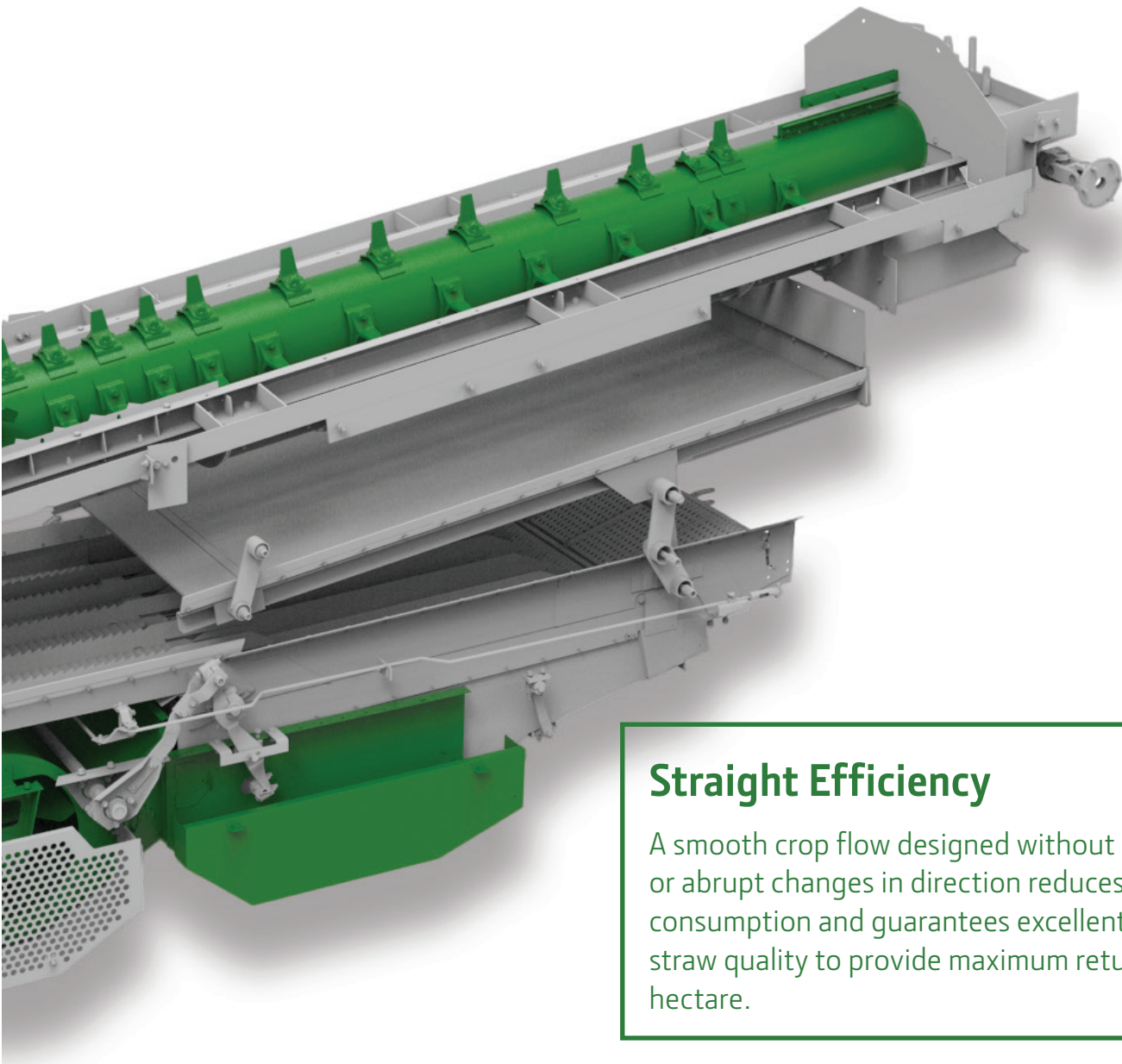


***BUILT ON THE
LEGENDARY JOHN DEERE
CTS COMBINE DESIGN***



Easy & Fast Crop To Crop Changeover

The C1 200 is probably the most versatile combine you can get. Multiple attachments let you switch between different crops quickly, so you can fine tune performance and reap higher profits.

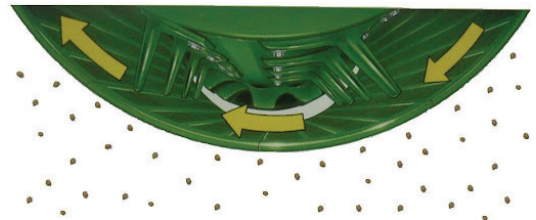


Straight Efficiency

A smooth crop flow designed without sharp turns or abrupt changes in direction reduces power consumption and guarantees excellent grain and straw quality to provide maximum returns per hectare.

Large Active Separation Area

The 3300 mm long tine separator with its very large active separation surface produces huge inertia, which in combination ensure reliable separation of the last few grains.



Utmost Performance Across All Possible Conditions

- ✓ 3 rotor speeds
- ✓ Independently adjustable cylinder speed
- ✓ 2 top cover angles
- ✓ Variety of different concaves to match your needs
- ✓ Separator grate spacers to fine-tune performance

ENJOY CLEAN GRAIN

CLEANING

The productivity you 're looking for means harvesting fast while handling high material throughput. Naturally, the C1 200 cleaning shoe is built for that.

Details Make the Difference

The openings of the chaffer and sieve can easily be adjusted according to grain size, crop moisture, chaff volume and other residue. The counter-direction movement of chaffer and sieve causes a self-cleaning effect and effectively avoids vertically stuck straw.

Massive Cleaning Shoe Capacity

With total 3.4 m² of cleaning shoe area and a wide range adjustable fan speed, the C1 200 is ready to handle high crop flows.





FAST UNLOADING

TIME IS MONEY

The large 5500 l grain tank, plus the new tank lid folding mechanism help reduce non-harvest travel in the field.

At 75 l/s you can unload your valuable crop faster than before.

The unloading auger swings a full 110° to the front, providing great visibility from the cab. With 4.1 m height there is ample clearance for on-the-go unloading to grain carts and trucks.

Less Broken Grain

The large diameter auger helps reduce damaged grain. You benefit from less broken kernels and higher prices you can get from your grain store.

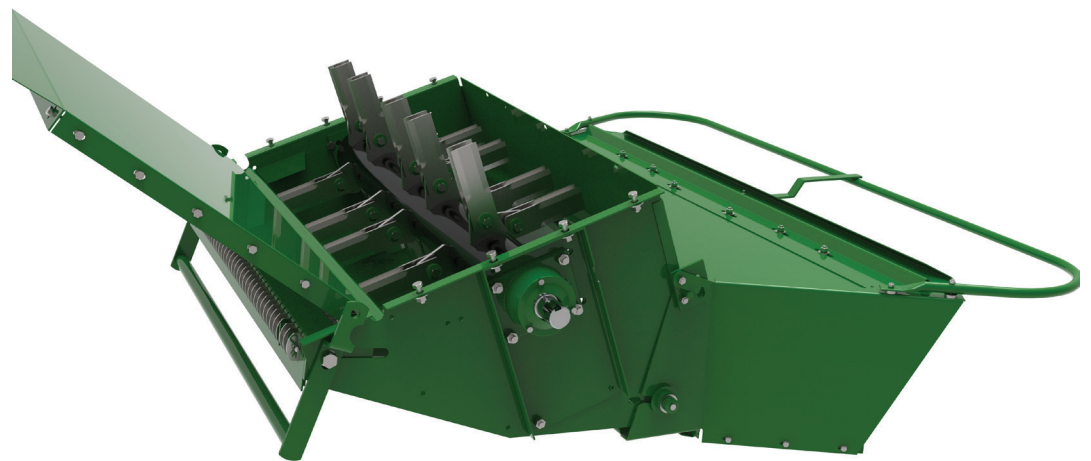


MAINTAINING FERTILE SOIL

RESIDUE MANAGEMENT

The 40 rotating knives and 39 stationary knives ensure excellent chopping quality. This makes subsequent tillage or direct planting more efficient.

It also accelerates the straw rotting and humus build up, so your next crop has the nutrients it takes for another year at high yields.



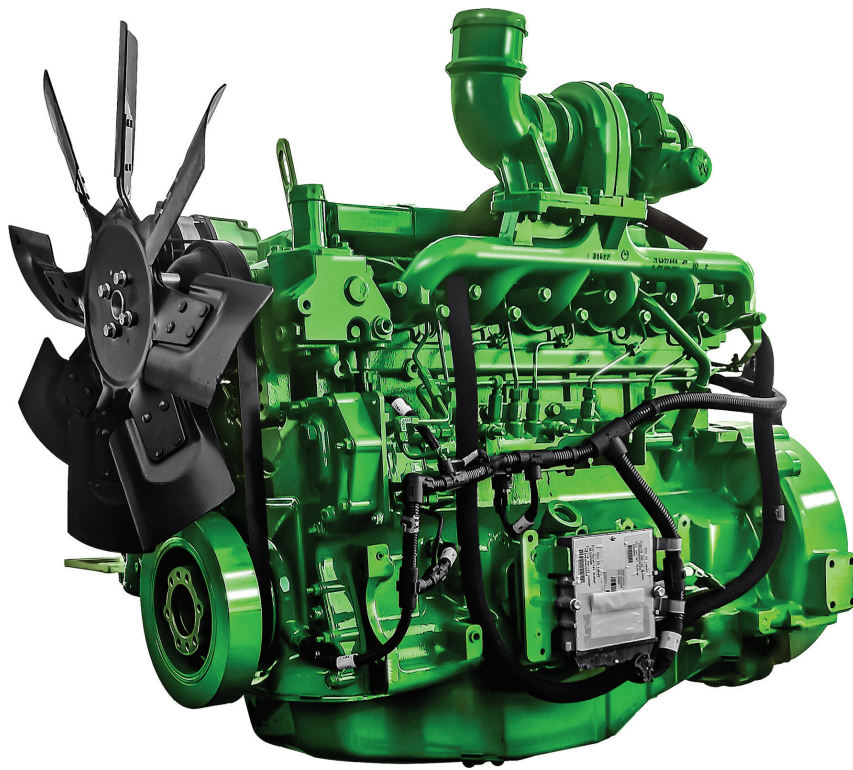
Even Residue Distribution

The deflector with adjustable vanes, helps to more evenly distribute the residue behind the combine across the entire header width.

MORE POWER, MORE EFFICIENCY

ENGINE

The John Deere 6.8 l turbo-charged PowerTech 6-cylinder engine is specifically designed to deliver the extended uptime you're looking for, and it comes with precise fuel injection technology that keeps fuel consumption low.



The Agricultural Engine

We do something others don't: We design and build our own engines. It's how we're able to deliver on the unique performance requirements of agricultural work. Able to handle abrupt load changes, capable to run at max power all day, built to handle excessive dust & heat while being reliable year after year, after year.

400 l Polyethylene Fuel Tank

33% More fuel tank capacity compared to previous models, get you even through the longest harvest day without having to refill. Leveraging modern polyethylene vs. steel prevents corrosion during off-season that otherwise could cause downtime in the following season.

GO THROUGH ANY TERRAIN

DRIVE TRAIN

The simple driveline with tough, hard-wearing components and fewer moving parts is the reason for the legendary reliability of the original German design.

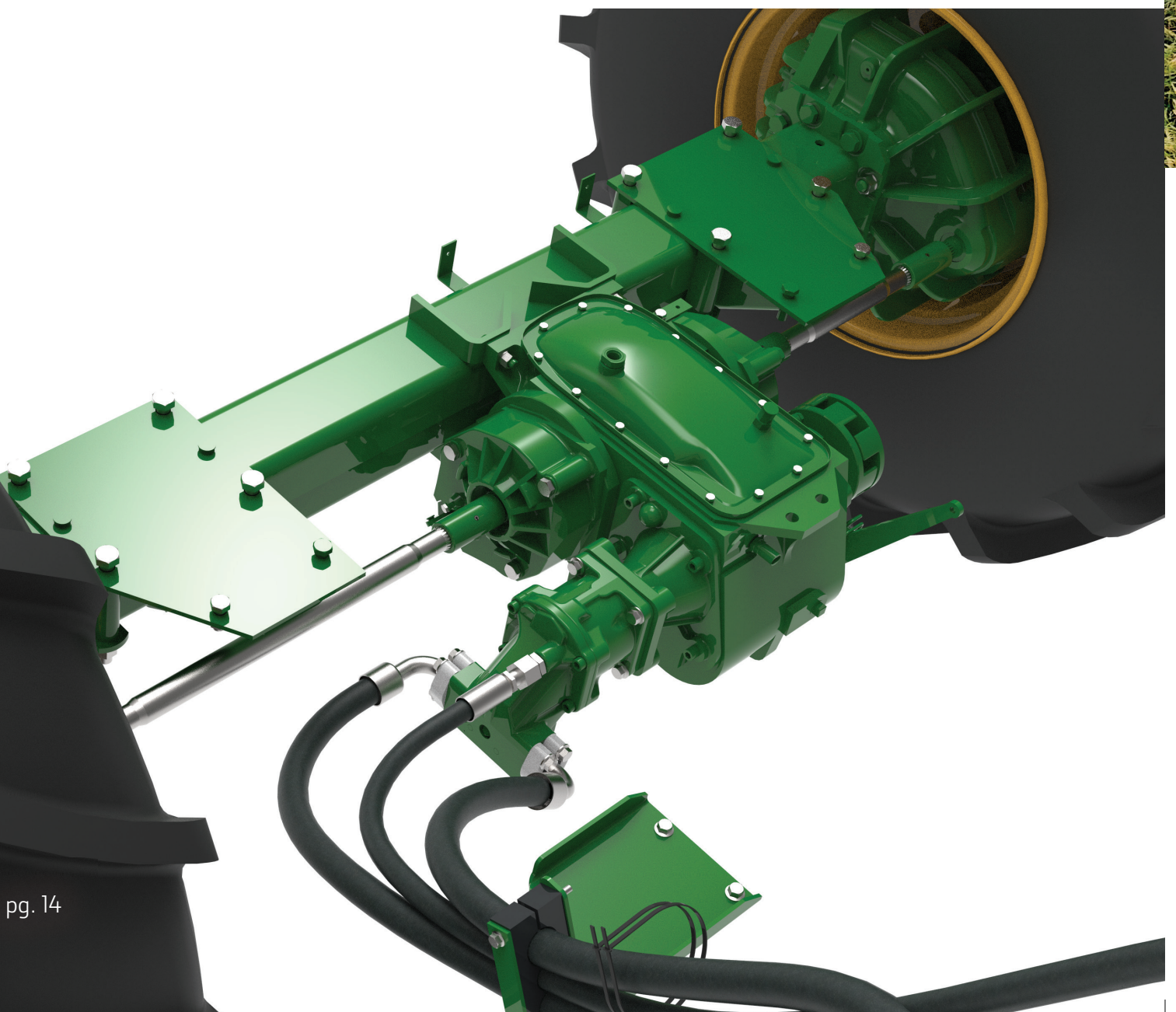
Tough When It Is Rough

Being well aware that in Africa, Asia and Central America often you operate in extremely remote and rough areas, we have further reinforced several hotspots. Making sure the C1 200 won't let you down when you depend on it.

+33%
REAR AXLE
WALL THICKNESS

Powerful Hydrostatic Drive

Enjoy the comfort and precise control of the C1 200 hydrostatic ground drive.





Steel Track Ready

If you have the need for extra flotation and traction, for example when harvesting rice in paddy fields, you can order the C1 200 steel track ready.

This options provides additional chassis support structure, a separate 4WD drop box with adjusted gear ratios and other modifications for full compatibility with the popular steel tracks of the Brazil manufacturer Agro Maquinas.

Within a few hours only, you'll be able to switch from wheels to steel tracks and back.

4-Wheel Drive

When you face challenging soil conditions, you can count on the C1 200 four-wheel drive.

The mechanical shaft ensures 100% of the torque input actually reaches the rear wheels. It also improves uptime, increases service friendliness and reduces lifecycle cost.

EASY & FUN

OPERATOR STATION

The large 2.3 m³ spacious and air-conditioned cab of the C1 200 provides you a comfortable work environment with low noise levels during long harvesting hours.

Easy To Operate

The multi-functional control joystick lets you control multiple functions at the same time. Making headland turns easy and letting you react quickly to changing field conditions.

All Important Info In Sight

The corner post display shows vital machine and harvesting parameters in real time, allowing you to easily survey what is happening and instantly react when needed.

A Great View

When time matters but darkness appears you can depend on 6 roof mounted and 2 working LED lights that provide you excellent visibility. Helping you to keep up productivity, watch the surroundings and avoid any damage.

Convenient Cab Access

The rotatable ladder not only provides convenient access to the cab but also reduces the risk of damage.





UPTIME MATTERS

SERVICE & MAINTENANCE

The C1 200 doesn't just save you time in the field, but also on maintenance and cleaning. To make these tasks as simple and quick as possible, we always kept the operator in mind during the design process.

- ✓ Premium quality chains, bearings and belts
- ✓ Quick access to critical service points (e.g. radiator, engine...)
- ✓ Long oil change interval (500 h with John Deere Plus-50 II oil)
- ✓ Easy to replace bolted knives on the cutterbar
- ✓ An easy to reach engine oil drain handle
- ✓ Availability of a service parts package

High Wear Package

Specifically designed for customers facing highly abrasive rice, John Deere can offer an optional high wear package.



C1200

SPECIFICATION

Engine	
Type	John Deere PowerTech™ 6.8 L Engine
Emission level	Tier 3/Stage IIIA
Rated power	136 kw / 185 hp
Fuel tank capacity	400 l
Threshing Cylinder	
Diameter	610 mm (rasp-bar type)
Wrapping angle	118°
Threshing speed range	140 – 400 rpm (with reduction gearbox) / 350 – 1000 rpm (without reduction gearbox)
Separate Rotor	
Rotor length	3300 mm
Separator rotor diameter	500 mm
Cleaning Shoe	
Total cleaning area	3.4 m ²
Grain Tank	
Capacity	5500 l
Unloading auger swing range	110 °
Unloading Speed	75 l/s
Discharge height	4.1 m
Residue Management	
Rotating knives / Stationary knives quantity	40/39
Ground Drive	
Transmission	Mechanical 4 speed
Maximum speed	21 km/h
4-wheel drive	○
Dimension and Weight without header, in transportation position	
Length x Width x Height	7.52 m x 3.28 m x 3.96 m
Weight	11060 kg (4-wheel drive), 10760 kg (2-wheel drive)
Cab	
Multi-control Joystick	●
Corner post display	●
Air conditioner	●
Tire size	
Front tire	23.1-26 R1 (2WD); 28L-26 R2 (4WD)
Rear tire	12.00-18 R1 (2WD); 14.9-24 R2 (4WD)

● Standard ○ Optional

SUPPORTED BY ONE OF THE MOST RESPONSIVE DEALER NETWORKS IN THE BUSINESS

Nobody cares more about keeping your equipment in solid working order than your John Deere dealer. With a complete inventory of genuine John Deere parts, highly trained service technicians, and a thorough understanding of your business, your John Deere dealer knows how to keep you and your equipment up and running.

A strong name in equipment and a strong dealership network: get it all with John Deere.



This literature has been compiled for worldwide circulation. While general information, pictures and descriptions are provided, some illustrations and text may include finance, credit, insurance, product options and accessories not available in all regions. Please contact your local dealer for details.

John Deere reserves the right to change specification and design of product described in this literature without notice. The green and yellow colour scheme, the leaping deer logo and the JOHN DEERE word mark are trademarks of Deere & Company.