

FAST FACT

# 310L

## BACKHOE LOADER

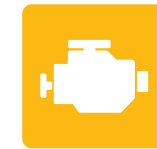


JOHN DEERE



## MEET THE REDESIGNED 310L BACKHOE LOADER

When we upgraded our 310L Backhoe Loader, we really used our imaginations. For starters, we imagined more engine power and increased productivity. Low-effort controls. Responsive hydraulics. Unmatched durability. And easier periodic service for lower operating costs. Then we delivered all that — and more. Welcome to your new favorite machine.



# 4%

**MORE ENGINE POWER  
THAN THE 310K**

### Field proven

John Deere 4.5L engines are some of the strongest, most reliable we've ever built. L-Series Backhoes use a wet-sleeve engine design with replaceable cylinder liners for exceptional cooling, reduced oil breakdown, and reduced ring wear. This means cooler engine components and longer life compared to cast-in block designs.

### Reach new heights

For greater performance in extreme elevations and conditions, our high-altitude engine configuration easily gets the job done. It offers pilot injection for easy cold-weather starting, four-valve cylinder head for exceptional "breathing" at high altitude, and a Variable Geometry Turbocharger (VGT) that automatically compensates for altitude changes.

### Simplified maintenance

You asked for periodic service and machine repairs to be simple and do-it-yourself. Our proven high-performance systems such as robust mechanical fuel and hydraulic gear pumps help get your machine back to work without leaving the jobsite or dragging into downtime. With this kind of reliability, what else can you expect from a backhoe?

### Comfortable cab

Operator's station includes mechanical-suspension deluxe fabric swivel seat with a range of lumbar settings, fully adjustable armrests, expansive front window, and more legroom. To be even more efficient and reduce operator fatigue, opt for low-effort backhoe pilot controls.

### Save time and money

Same-side ground-level service points help speed daily checks and fills. Quick-change filters, extended maintenance intervals, simple-to-read sight gauges, nonmetallic fuel tank, and easy-access grease zerks increase uptime and lower daily operating costs.

### Smooth gear changes

Standard four-speed PowerShift™ transmission provides on-the-go clutchless gear changes for the operator, minimizing fatigue and maximizing productivity.

### Work in tight areas

Compact overall length enables extra maneuverability on close jobsites. Looking for more reach? The extendable dipperstick option will help you get there.

### True 4WD on command

Optional limited-slip mechanical-front-wheel drive (MFWD) delivers surefooted traction in a wide range of ground conditions.

### Diagnostic interface

State-of-the-art multi-language monitor clearly displays a wealth of vital and general machine info plus onboard diagnostics of most sensors and switches, for uptime-boosting troubleshooting.

### Diff-lock protection

When enabled through the monitor, differential-lock protection prevents engagement at high travel speeds and subsequent wear and tear on axle components.

### Powertrain performance

Responsive standard four-speed transmission productively delivers travel speeds over 22 mph.

### Take it easy

Optional ride control functions as a shock absorber, smoothing moves over rough terrain. So full loads are more likely to arrive at their destination instead of somewhere in-between. Also helps reduce operator fatigue.

### Extended service intervals

500-hour engine and 2,000-hour hydraulic oil-service intervals<sup>1</sup> enable the 310L to work longer between changes.

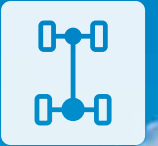
<sup>1</sup>High-altitude engine configuration has a 250-hour oil-service interval.

### Daily checks made easy

Same-side ground-level service points speed daily checks and fluid fills. Simple-to-read sight gauges and easy-access grease zerks help increase uptime and contain operating costs.

### Get a grip

“Palm-on-top” loader-control grip is even more comfortable and easy to use. Clutch disconnect is integrated into the control grip, ideal for stockpiling or truck loading.



# 4WD

AT YOUR  
COMMAND  
(OPTIONAL)



# 310L SPECIFICATIONS

Engine	310L		
Manufacturer and Model	John Deere PowerTech™ 4045TBZ01 turbocharged	John Deere PowerTech 4045HBZ01 turbocharged	John Deere PowerTech™ Plus 4045HBZ02 turbocharged, country specific
Non-Road Emission Standard	EPA Tier 2/EU Stage II	Brazil MAR-I	Non-certified; optimized for high-altitude use (HALT)
Displacement	4.5 L (276 cu. in.)	4.5 L (276 cu. in.)	4.5 L (276 cu. in.)
Power Ratings With Fixed Fan			
Gross Power at Rated Speed	63 kW (84 hp) at 2,200 rpm	N/A	65 kW (88 hp) at 2,250 rpm
Gross Peak Power	66 kW (88 hp) at 2,000 rpm	N/A	68 kW (92 hp) at 2,000 rpm
Gross Peak Torque	355 Nm (262 lb.-ft.) at 1,300 rpm	N/A	387 Nm (285 lb.-ft.) at 1,300 rpm
Net Peak Power (ISO 9249)	62 kW (83 hp) at 2,000 rpm	N/A	65 kW (87 hp) at 1,960 rpm
Net Peak Torque (ISO 9249)	344 Nm (254 lb.-ft.) at 1,200 rpm	N/A	377 Nm (278 lb.-ft.) at 1,300 rpm
Net Torque Rise	36%	N/A	46%
Power Ratings With Viscous Fan			
Gross Power at Rated Speed	N/A	65 kW (87 hp) at 2,200 rpm	65 kW (88 hp) at 2,250 rpm
Gross Peak Power	N/A	66 kW (88 hp) at 1,980 rpm	68 kW (92 hp) at 2,000 rpm
Gross Peak Torque	N/A	371 Nm (274 lb.-ft.) at 1,600 rpm	387 Nm (285 lb.-ft.) at 1,300 rpm
Net Peak Power (ISO 9249)	N/A	64 kW (86 hp) at 1,850 rpm	68 kW (91 hp) at 1,960 rpm
Net Peak Torque (ISO 9249)	N/A	365 Nm (269 lb.-ft.) at 1,600 rpm	382 Nm (282 lb.-ft.) at 1,300 rpm
Net Torque Rise	N/A	32%	40%
Lubrication	Pressure system with spin-on filter and cooler	Pressure system with spin-on filter and cooler	Pressure system with spin-on filter and cooler
Air Cleaner	Dual-stage dry type with safety element and evacuator valve	Dual-stage dry type with safety element and evacuator valve	Dual-stage dry type with safety element and evacuator valve
<b>Cooling</b>			
Fan Type	Belt-driven standard	Suction-type temperature controlled (viscous) standard	Suction type standard / suction-type temperature controlled (viscous), variable rate optional
Engine Coolant Rating	-40 deg. C (-40 deg. F)	-40 deg. C (-40 deg. F)	-40 deg. C (-40 deg. F)
Engine Oil Cooler	Oil to water	Oil to water	Oil to water
<b>Powertrain</b>			
Transmission	4-speed, helical-cut gears, full PowerShift™ transmission with hydraulic reverser standard; electric clutch cutoff on loader lever		
Torque Converter	Single stage, dual phase with 2.63:1 stall ratio, 280 mm (11 in.)		
Measured With 19.5L-24 Rear Tires	<i>Standard Engine</i>		
	<i>Forward</i>	<i>Reverse</i>	
Gear 1	5.3 km/h (3.3 mph)	6.8 km/h (4.2 mph)	
Gear 2	9.8 km/h (6.1 mph)	12.4 km/h (7.7 mph)	
Gear 3	20.3 km/h (12.6 mph)	—	
Gear 4	36.8 km/h (22.9 mph)	—	
<b>Axles</b>			
Axle Oscillation, Stop to Stop, Front Axle	22 deg.		
Axle Ratings	<i>Non-Powered Front</i>	<i>Mechanical-Front-Wheel Drive (MFWD)</i>	<i>Rear</i>
SAE J43	5000 kg (11,000 lb.)	5000 kg (11,000 lb.)	6000 kg (13,200 lb.)
Dynamic	7000 kg (15,400 lb.)	8500 kg (18,700 lb.)	9500 kg (20,900 lb.)
Static	20 500 kg (45,200 lb.)	23 500 kg (51,800 lb.)	26 000 kg (57,300 lb.)
Ultimate	32 500 kg (71,700 lb.)	37 000 kg (81,600 lb.)	39 500 kg (87,100 lb.)
<b>Differentials</b>			
MFWD Axle	Open – standard; automatic, limited-slip traction control – custom or optional		
Rear Axle	Foot actuated, hydraulically engaged 100% mechanical lock		
<b>Steering (ISO 5010)</b>	Hydrostatic power steering and emergency steering		
Axle	<i>Non-Powered Front</i>	<i>MFWD</i>	
Curb-Turning Radius			
With Brakes	3.51 m (11 ft. 6 in.)	3.53 m (11 ft. 7 in.)	
Without Brakes	4.11 m (13 ft. 6 in.)	4.14 m (13 ft. 7 in.)	
Bucket-Clearance Circle			
With Brakes	10.13 m (33 ft. 3 in.)	10.14 m (33 ft. 3 in.)	
Without Brakes	10.99 m (36 ft. 1 in.)	11.01 m (36 ft. 1 in.)	
Steering Wheel Turns (lock to lock)	3.2	2.7	

# 310L SPECIFICATIONS



Powertrain (continued)	310L		
MFWD Axle	Heavy duty, outboard planetary final drives distribute shock loads over 3 gears		
<b>Brakes</b>			
Service	Power assisted, hydraulic wet disc, mounted inboard, self-adjusting and self-equalizing		
Parking	Spring applied, hydraulically released, wet, multi-disc, independent of service brakes with electric switch control		
<b>Hydraulics</b>			
Main Pump	Open center, single-gear pump		
Pump Flow at 2,200 rpm			
Backhoe	106 L/m (28 gpm)		
Loader	106 L/m (28 gpm)		
System Relief Pressure			
Backhoe	24 993 kPa (3,625 psi)		
Loader	22 063 kPa (3,200 psi)		
<b>Controls</b>			
Backhoe	2-lever manual standard; pilot controls with pattern select optional		
Loader	Single-lever control with electric clutch cutoff switch standard; manual auxiliary function (2nd lever) optional		
<b>Cylinder</b>			
Heat-treated, chrome-plated, polished rods; hardened steel (replaceable bushings) pivot pins			
	<i>Bore</i>	<i>Rod Diameter</i>	<i>Stroke</i>
Loader Boom (2)	80 mm (3.15 in.)	50 mm (1.97 in.)	790 mm (31.10 in.)
Loader Bucket (1)	90 mm (3.54 in.)	50 mm (1.97 in.)	744 mm (29.29 in.)
Backhoe Boom (1)	110 mm (4.33 in.)	56 mm (2.20 in.)	821 mm (32.32 in.)
Backhoe Crowd (1)	110 mm (4.33 in.)	63 mm (2.48 in.)	553 mm (21.77 in.)
Backhoe Bucket (1)	80 mm (3.15 in.)	50 mm (1.97 in.)	892 mm (35.12 in.)
Backhoe Swing (2)	80 mm (3.15 in.)	45 mm (1.77 in.)	310 mm (12.20 in.)
Backhoe Extendable Dipperstick (1)	63 mm (2.48 in.)	32 mm (1.26 in.)	1062 mm (41.81 in.)
Backhoe Stabilizer (2)	80 mm (3.15 in.)	50 mm (1.97 in.)	500 mm (19.69 in.)
Non-Powered Axle (1)	70 mm (2.76 in.)	42 mm (1.65 in.)	210 mm (8.27 in.)
MFWD (1)	67 mm (2.64 in.)	42 mm (1.65 in.)	210 mm (8.27 in.)
<b>Electrical</b>			
	<i>EPA Tier 2/EU Stage II</i>	<i>Brazil MAR-I</i>	<i>Non-certified; optimized for high-altitude use (HALT)</i>
Voltage	12 volt	12 volt	12 volt
Alternator Rating			
Dual-Lever Backhoe Manual Controls	90 amp	90 amp	120 amp
Backhoe Pilot Controls	120 amp	120 amp	120 amp
<b>Lights</b>	10 halogen: 4 front, 4 rear, and 2 side docking (32,500 candlepower each); turn signals and flashers: 2 front and 2 rear; stop and taillights; and 2 rear reflectors; cab (10 lights); quarter cab (6 lights)		
<b>Operator Station</b>			
Type (ISO 3471)	Fully enclosed cab, isolation mounted, ROPS/FOPS, left/right access, with molded roof; optional quarter cab (front glass only) or canopy (no glass)		
<b>Tires/Wheels</b>			
	<i>Front</i>	<i>Rear</i>	
Non-Powered Front Axle	11L-16 F-3 (12)	19.5L-24 R-4 (10)	
With MFWD	12-16.5 NHS (10)	19.5L-24 R-4 (10)	
	12.5/80-18 I3 (12)	19.5L-24 R-4 (10)	
<b>Serviceability</b>			
<b>Refill Capacities</b>			
Cooling System	21 L (22.2 qt.)		
Rear Axle	18 L (19 qt.)		
Engine Oil (including vertical spin-on filter)	13 L (13.7 qt.)		
Torque Converter and Transmission	15.1 L (16 qt.)		
Fuel Tank (with ground-level fueling)	155.2 L (41 gal.)		
Hydraulic System	102.2 L (27 gal.)		
Hydraulic Reservoir	37.1 L (9.8 gal.)		
MFWD Housing			
Axle	6.5 L (6.9 qt.)		
Planetary (each)	0.9 L (1 qt.)		

**Operating Weights** 310L

With Full Fuel Tank, 79-kg (175 lb.) Operator, and Standard Equipment

Standard With Cab, 4-Wheel-Drive Axle, and Bumper	6898 kg (15,207 lb.)
---	----------------------

Typical With Cab, 4-Wheel-Drive Axle, and 205-kg (450 lb.) Counterweight	7103 kg (15,659 lb.)
--	----------------------

**Optional Components (weight difference between base equipment and option)**

Cab	263 kg (580 lb.)
-----	------------------

Standard Front Axle With Tires	-168 kg (-370 lb.)
--------------------------------	--------------------

Extendable Dipperstick	191 kg (420 lb.)
------------------------	------------------

**Overall Dimensions**

<b>A</b> Ground Clearance, Minimum	305 mm (12 in.)
------------------------------------	-----------------

<b>B</b> Overall Length, Transport	7.09 m (23 ft. 3 in.)
------------------------------------	-----------------------

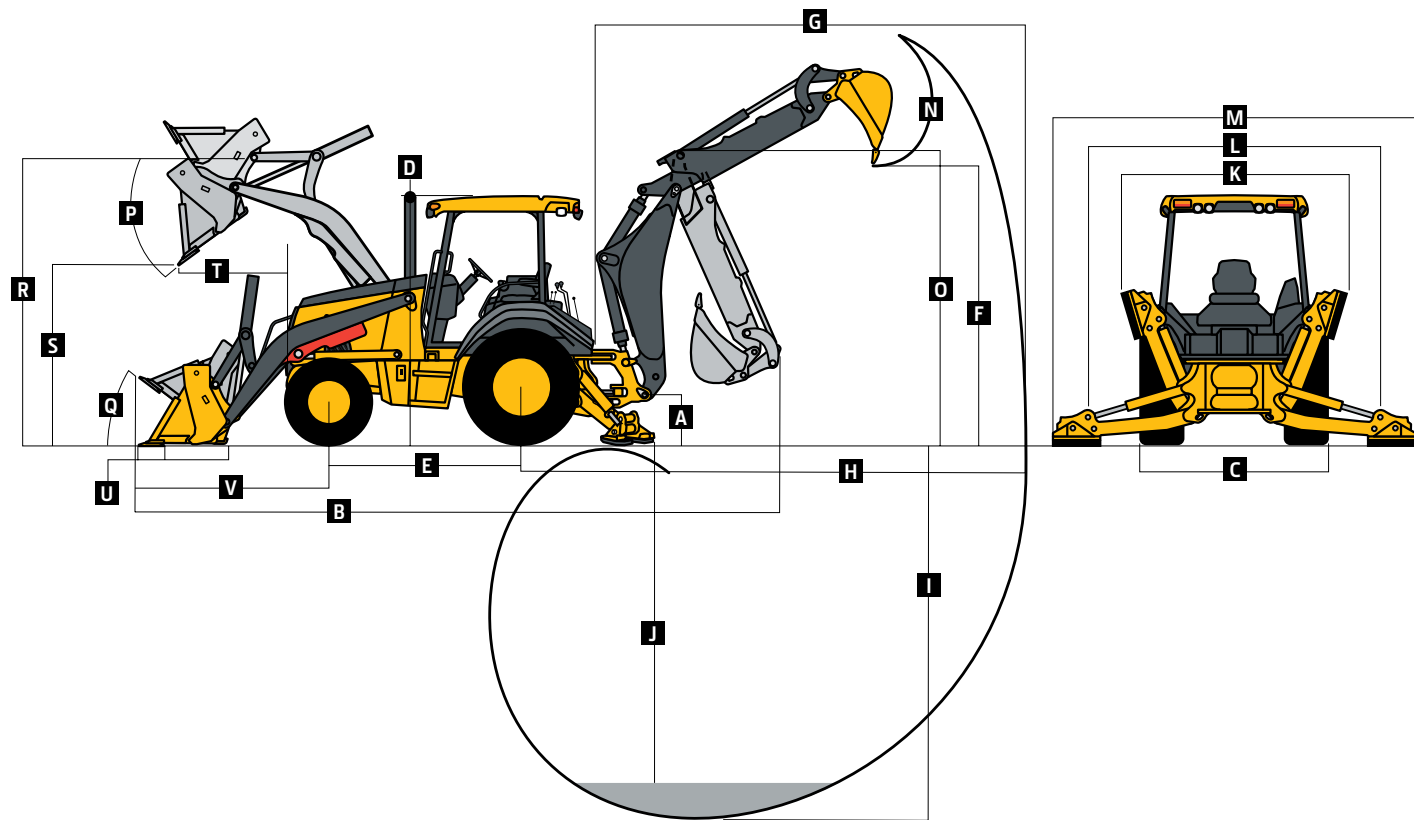
<b>C</b> Width Over Tires	2.18 m (7 ft. 2 in.)
---------------------------	----------------------

<b>D</b> Height to Top of ROPS/Cab	2.74 m (9 ft. 0 in.)
------------------------------------	----------------------

<b>E</b> Length From Axle to Axle	
-----------------------------------	--

Non-Powered Front Axle	2.11 m (6 ft. 11 in.)
------------------------	-----------------------

MFWD Axle	2.14 m (7 ft. 0 in.)
-----------	----------------------



**Backhoe Dimensions and Performance**

Backhoe specifications are with 762-mm x 0.28-m<sup>3</sup> (30 in. x 10 cu. ft.) bucket

Bucket Range	305-762 mm (12-30 in.)
--------------	------------------------

Digging Force	
---------------	--

Bucket Cylinder	48.5 kN (10,910 lb.)
-----------------	----------------------

Crowd Cylinder	30.9 kN (6,950 lb.)
----------------	---------------------

Swing Arc	180 deg.
-----------	----------

Operator Control	2 levers
------------------	----------

Leveling Angle	14 deg.
----------------	---------

Stabilizer Angle Rearward	18 deg.
---------------------------	---------

**Backhoe Dimensions and Performance (continued)** 310L

Backhoe specifications are with 762-mm x 0.28-m<sup>3</sup> (30 in. x 10 cu. ft.) bucket

With Optional Extendable Dipperstick

	<i>With Standard Backhoe</i>	<i>Retracted</i>	<i>Extended</i>
--	------------------------------	------------------	-----------------

<b>F</b> Loading Height, Truck Loading Position	3.18 m (10 ft. 5 in.)	3.51 m (11 ft. 6 in.)	4.17 m (13 ft. 8 in.)
---	-----------------------	-----------------------	-----------------------

<b>G</b> Reach From Center of Swing Pivot	5.42 m (17 ft. 9 in.)	5.49 m (18 ft. 0 in.)	6.51 m (21 ft. 4 in.)
---	-----------------------	-----------------------	-----------------------

<b>H</b> Reach From Center of Rear Axle	6.48 m (21 ft. 3 in.)	6.55 m (21 ft. 6 in.)	7.57 m (24 ft. 10 in.)
---	-----------------------	-----------------------	------------------------

<b>I</b> Digging Depth (SAE maximum)	4.27 m (14 ft. 0 in.)	4.30 m (14 ft. 1 in.)	5.36 m (17 ft. 7 in.)
--------------------------------------	-----------------------	-----------------------	-----------------------

<b>J</b> Digging Depth (SAE)			
------------------------------	--	--	--

610-mm (2 ft.) Flat Bottom	4.23 m (13 ft. 11 in.)	4.26 m (14 ft. 0 in.)	5.33 m (17 ft. 6 in.)
----------------------------	------------------------	-----------------------	-----------------------

2440-mm (8 ft.) Flat Bottom	3.90 m (12 ft. 9 in.)	3.93 m (12 ft. 11 in.)	5.07 m (16 ft. 8 in.)
-----------------------------	-----------------------	------------------------	-----------------------

<b>K</b> Stabilizer Width, Transport	2.18 m (7 ft. 2 in.)	2.18 m (7 ft. 2 in.)	2.18 m (7 ft. 2 in.)
--------------------------------------	----------------------	----------------------	----------------------

<b>L</b> Stabilizer Spread, Operating	3.10 m (10 ft. 2 in.)	3.10 m (10 ft. 2 in.)	3.10 m (10 ft. 2 in.)
---------------------------------------	-----------------------	-----------------------	-----------------------

<b>M</b> Stabilizer Overall Width, Operating	3.53 m (11 ft. 7 in.)	3.53 m (11 ft. 7 in.)	3.53 m (11 ft. 7 in.)
--	-----------------------	-----------------------	-----------------------

<b>N</b> Bucket Rotation	190 deg.	190 deg.	190 deg.
--------------------------	----------	----------	----------

<b>O</b> Transport Height	3.41 m (11 ft. 2 in.)	3.44 m (11 ft. 3 in.)	3.44 m (11 ft. 3 in.)
---------------------------	-----------------------	-----------------------	-----------------------

**Loader Dimensions and Performance**

<b>P</b> Bucket Dump Angle, Maximum	45 deg.		
-------------------------------------	---------	--	--

<b>Q</b> Rollback Angle at Ground Level	40 deg.		
---	---------	--	--

	<i>Heavy-Duty Long Lip</i>	<i>Multipurpose</i>	
--	----------------------------	---------------------	--

Bucket Capacity	0.96 m <sup>3</sup> (1.25 cu. yd.)	0.96 m <sup>3</sup> (1.25 cu. yd.)	
-----------------	------------------------------------	------------------------------------	--

Width	2184 mm (86 in.)	2184 mm (86 in.)	
-------	------------------	------------------	--

Weight	480 kg (1,058 lb.)	800 kg (1,764 lb.)	
--------	--------------------	--------------------	--

Breakout Force	39.6 kN (8,908 lb.)	37.0 kN (8,314 lb.)	
----------------	---------------------	---------------------	--

Lift Capacity, Full Height	2860 kg (6,306 lb.)	2578 kg (5,684 lb.)	
----------------------------	---------------------	---------------------	--

<b>R</b> Height to Bucket Hinge Pin, Maximum	3.43 m (11 ft. 3 in.)	3.43 m (11 ft. 3 in.)	
--	-----------------------	-----------------------	--

<b>S</b> Dump Clearance, Bucket at 45 deg.	2.63 m (8 ft. 7 in.)	2.63 m (8 ft. 8 in.)	
--	----------------------	----------------------	--

<b>T</b> Reach at Full Height, Bucket at 45 deg.	862 mm (33.9 in.)	728 mm (28.6 in.)	
--	-------------------	-------------------	--

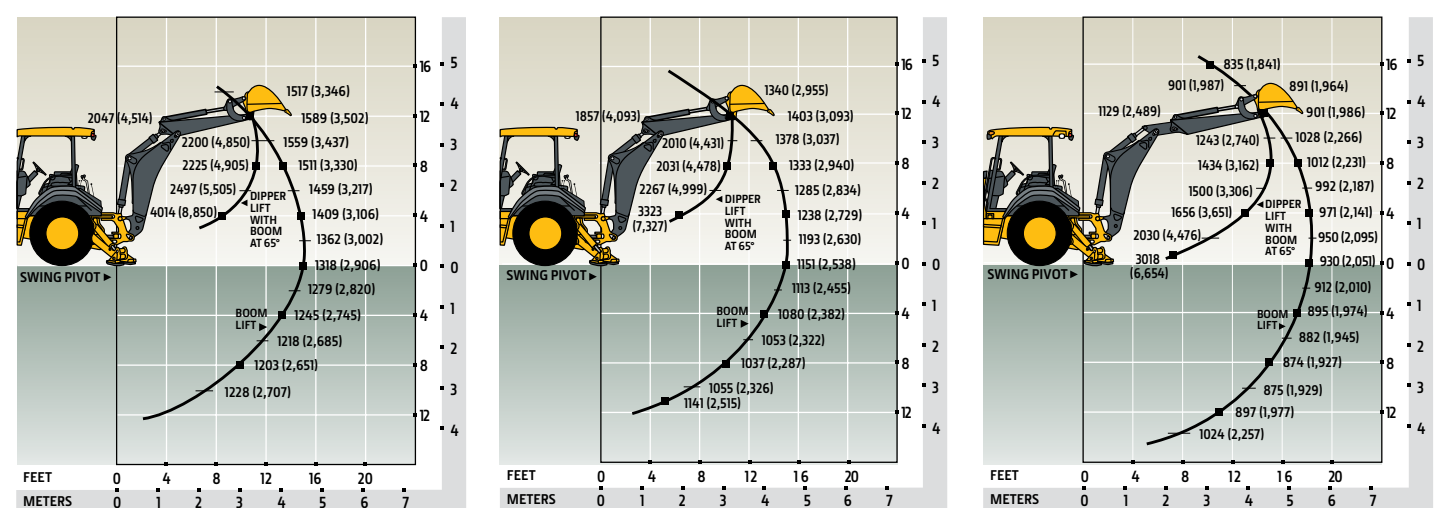
<b>U</b> Digging Depth Below Ground, Bucket Level	106 mm (4.2 in.)	166 mm (6.5 in.)	
---	------------------	------------------	--

<b>V</b> Length From Front Axle Centerline to Bucket Cutting Edge	2.10 m (6 ft. 11 in.)	2.08 m (6 ft. 10 in.)	
---	-----------------------	-----------------------	--

**Lift Capacity with Bucket**

Lift capacities are over-end values in kg (lb.) according to SAE J31. Figures listed are maximum lift force available. Lift capacities are over end with stabilizers down and tires tangent to ground.

**STANDARD LIFT With Standard Dipperstick**      **STANDARD LIFT With 1.06-m (3 ft. 6 in.) Extendable Dipperstick, Retracted**      **STANDARD LIFT With 1.06-m (3 ft. 6 in.) Extendable Dipperstick, Extended**



# Additional equipment

Key: ● Standard ▲ Optional or special

See your John Deere dealer for further information.

<b>310L Engine</b>
● Coolant recovery tank with low-level indicator
● Serpentine belt with automatic belt tensioner
● Suction-type cooling fan
● Severe-duty fuel filter with water in fuel sensor
▲ Chrome exhaust extension
▲ 1,000-watt electric engine coolant heater
<b>Powertrain</b>
● PowerShift™ transmission: Torque converter with twist-grip TCL and neutral safety switch interlock (1st through 4th gears)
● Transmission oil cooler
▲ Transmission remote oil-sampling port
● Differential lock, electric foot actuated, protection on/off
● Planetary final drives
● Power-assisted hydraulic service brakes (conform to ISO 3450): Inboard, wet multi-disc, self-adjusting and self-equalizing
● Parking/emergency brake with electric switch control (conforms to ISO 3450): Spring applied, hydraulically released wet multi-disc / Independent of service brakes
● Hydrostatic power steering with emergency manual mode
▲ Non-powered front axle
● MFWD with open differential: Electric on/off control / Sealed axle
▲ MFWD with traction-control limited-slip differential: Electric on/off control / Sealed axle
● Automatic MFWD braking (4th gear over-drive only)
▲ MFWD driveshaft and oil cooler guard
<b>Backhoe</b>
● Standard dipperstick, 4.27-m (14 ft. 0 in.) digging depth
▲ Extendable dipperstick, 1.06-m (3 ft. 6 in.) extension
● ISO (Deere) 2-lever mechanical backhoe controls
▲ SAE 2-lever mechanical backhoe controls
▲ 2-lever pilot controls with pattern-selection feature
● Swing lock pin stored in operator's station
● Stabilizers with 2-direction anti-drift valves
▲ Backhoe couplers for John Deere, Case, and CAT buckets
▲ Auxiliary backhoe valve for hammers and compactors with auxiliary plumbing
▲ Heavy-duty rear-pivot pins

<b>310L Loader†</b>
● Loader bucket anti-spill (rollback)
● Return-to-dig feature
● Single-lever control with electric clutch disconnect
● Bucket-level indicator
● Loader boom service lock
▲ Auxiliary loader hydraulics with 2-lever control
▲ Multipurpose bucket
<b>Hydraulic System</b>
● 106-L/m (28 gpm) single-gear pump, open-center system
● Dedicated hydraulic reservoir
▲ Ride control
<b>Electrical System</b>
● 12-volt system
● 90-amp alternator (with dual-lever backhoe manual controls)
● 120-amp alternator (with backhoe pilot controls)
● Single battery with 180-min. reserve capacity and 750 CCA
▲ Dual batteries with 360-min. reserve capacity and 1,500 CCA
▲ Battery disconnect
<b>Lights</b>
● Halogen lights (10), 32,500 candlepower each (4 front driving/working, 4 rear working, and 2 side docking)
● Turn signal/flashing (2 front and 2 rear)
● Rear stop and tail (2)
<b>Operator's Station</b>
● Modular-design ROPS/FOPS (Level 2) canopy with molded roof (meets ISO 3449 and ISO 3471/SAE J1040): Isolation mounted
● Molded floor mat, standard
▲ Molded floor mat, premium
● 12-volt outlet
● Lockable right-side storage
● Operator's manual holder (canopy only)
● Operator's manual on roof (enclosed cab only)
▲ Interior front-view mirror
▲ Outside rearview mirrors
● Mechanical-cable hand throttle
● Suspended foot throttle
● Key start switch
▲ Tilt steering, infinitely adjustable
▲ Machine security (enabled through monitor)
● Digital display of engine hours, engine rpm, and system voltage

<b>310L Operator's Station (continued)</b>
● Monitor system with audible and visual warnings: Engine air restriction / Low alternator voltage / Engine oil pressure / Hydraulic filter restriction / Parking brake on/off / After-treatment temperature / Transmission fluid temperature / Fuel / Hour meter / Machine diagnostic information via 4-push-button/LCD operator interface
● <b>Canopy:</b> Mechanical-suspension deluxe vinyl swivel seat with lumbar adjustment and armrests (fully adjustable)
▲ <b>Quarter Cab:</b> Mechanical-suspension deluxe fabric swivel seat with lumbar adjustment and armrests (fully adjustable), front windshield, and windshield wiper (1 front)
▲ <b>Cab with Dual Doors and A/C:</b> Mechanical-suspension deluxe fabric swivel seat with lumbar adjustment / Headliner, dome light, left and right cab doors, tinted safety glass, windshield wipers (1 rear and 1 front), front windshield washer, fresh-air intake, and heater/defroster/pressurizer (11.7-kW [40,000 Btu/h] heater) / A/C (7.6-kW [26,000 Btu/h] output and CFC-free R134a refrigerant)
▲ AM/FM/weather-band radio (field kit option with cab only)
<b>Overall Vehicle</b>
● 1-piece unitized construction mainframe
● Vehicle tie-downs (2 front and 2 rear)
● Remote grease bank for front axle
● Front cover
▲ Heavy-duty front bumper
▲ Front counterweight – 205 kg (450 lb.) or 340 kg (750 lb.)
● Fuel tank, 155 L (41 gal.), ground-level fueling
● 2-position easy-tilt hood
● Extended grille frame
▲ Removable toolbox with padlock hasp
● Vandal protection for locking monitor, engine hood, toolbox, hydraulic reservoir, and fuel tank
● Reverse warning alarm
● Dent-resistant full-coverage rear fenders
● Tire valve-stem protection
▲ Backhoe boom-protection plate
● JDLink™ wireless communication system (available in specific countries; see your dealer for details)

†See dealer for range of heavy-duty and multipurpose loader buckets.

Actual machine configuration may differ from image. Not all models available in all countries.

Net engine power is with standard equipment including air cleaner, exhaust system, alternator, and cooling fan at test conditions specified per ISO 9249. No derating is required up to 1500-m (5,000 ft.) altitude and up to 3050-m (10,000 ft.) with optional altitude-compensating turbocharger. Specifications and design are subject to change without notice. Wherever applicable, specifications are in accordance with ISO standards. Except where otherwise noted, these specifications are based on a unit with 19.5-24-in. 10PR (R4) tubeless rear and 12.5/80-18 12PR front tires, 0.96-m<sup>3</sup> (1.25 cu. yd.) loader bucket, and 762-mm x 0.28-m<sup>3</sup> (30 in. x 10 cu. ft.) backhoe bucket.

