

This guide will step you through logging GNSS receiver data to the SF-3050 USB Host port via Carlson Software's SurvCE data collector program. The receiver data may be used for post-processing or troubleshooting.

- ✓ The following additional hardware is required for this interface:
 - Positronic 9-Pin Male to USB 2.0 Host Receptacle Data Cable, P/N 94-310271-3006LF
 - An un-partitioned USB Flash Drive
- ✓ SurvCE software version 2.30.47 (Beta release) or later is required for this interface
- ✓ The procedure which follows applies to all released versions of SF-3050 firmware

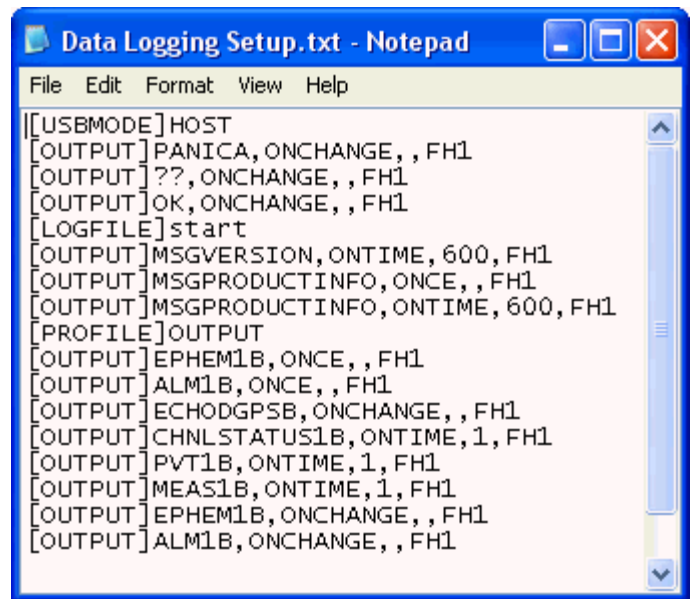


Procedure

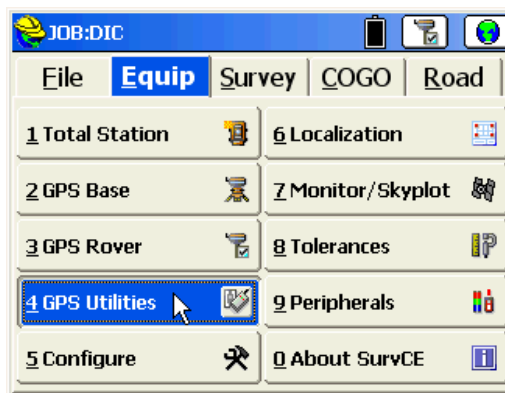
- ✓ Create a data logging command file. A sample file is provided below:

Data Logging Setup.txt:

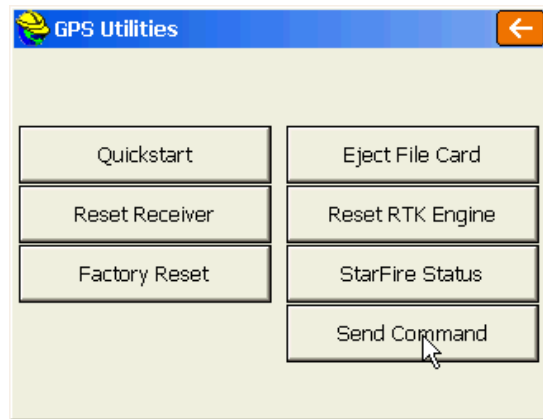
```
[USBMODE]HOST
[OUTPUT]PANICA,ONCHANGE,,FH1
[OUTPUT]??,ONCHANGE,,FH1
[OUTPUT]OK,ONCHANGE,,FH1
[LOGFILE]start
[OUTPUT]MSGVERSION,ONTIME,600,FH1
[OUTPUT]MSGPRODUCTINFO,ONCE,,FH1
[OUTPUT]MSGPRODUCTINFO,ONTIME,600,FH1
[PROFILE]OUTPUT
[OUTPUT]EPHEM1B,ONCE,,FH1
[OUTPUT]ALM1B,ONCE,,FH1
[OUTPUT]ECHODGPSB,ONCHANGE,,FH1
[OUTPUT]CHNLSTATUS1B,ONTIME,1,FH1
[OUTPUT]PVT1B,ONTIME,1,FH1
[OUTPUT]MEAS1B,ONTIME,1,FH1
[OUTPUT]EPHEM1B,ONCHANGE,,FH1
[OUTPUT]ALM1B,ONCHANGE,,FH1
```



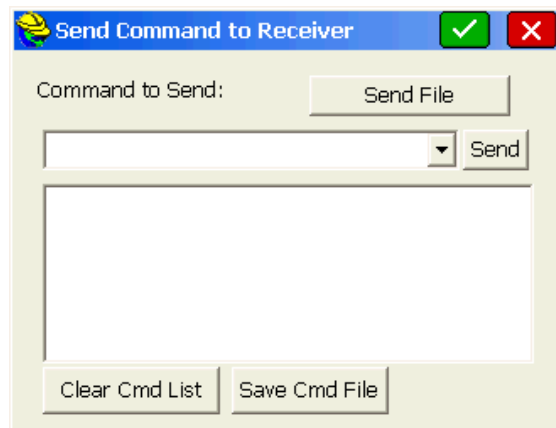
- ✓ Copy this file to the data collector
- ✓ Connect the data collector to the SF-3050 via either the receiver Bluetooth port or Com1 – RS-232
- ✓ Connect the USB 2.0 Host Data Cable to SF-3050 Com2
- ✓ Connect the USB Flash Drive to the USB 2.0 Host Data Cable
- ✓ Turn the receiver and data collector on and start the SurvCE program
- ✓ Establish a connection between the data collector and the SF-3050 (either Rover or Base, as appropriate)
- ✓ Select the *Equip* tab
- ✓ Click on *GPS Utilities*



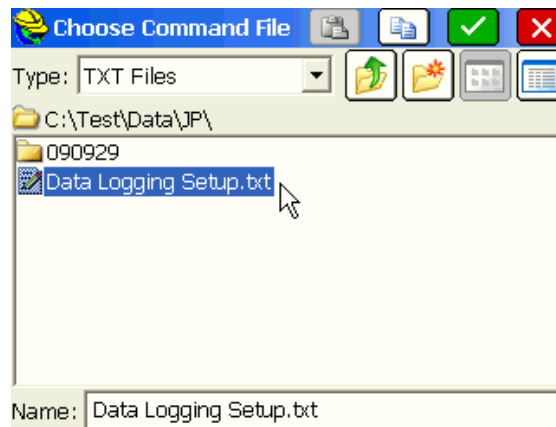
- ✓ Click on *Send Command*



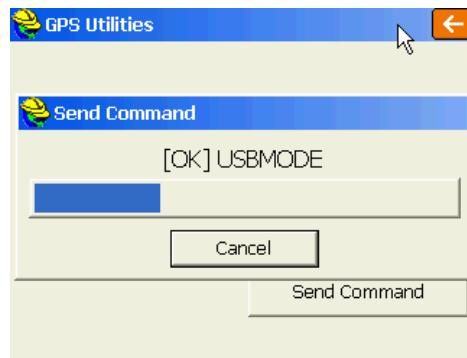
- ✓ Click on *Send File*



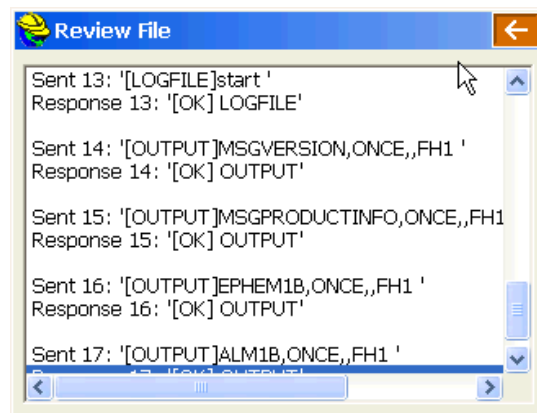
- ✓ Locate the *Data Logging Setup.txt* file and select it
- ✓ Click on the check mark [OK]



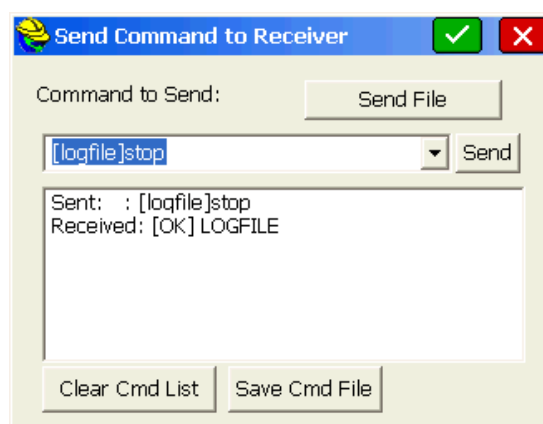
- ✓ The file transfer begins



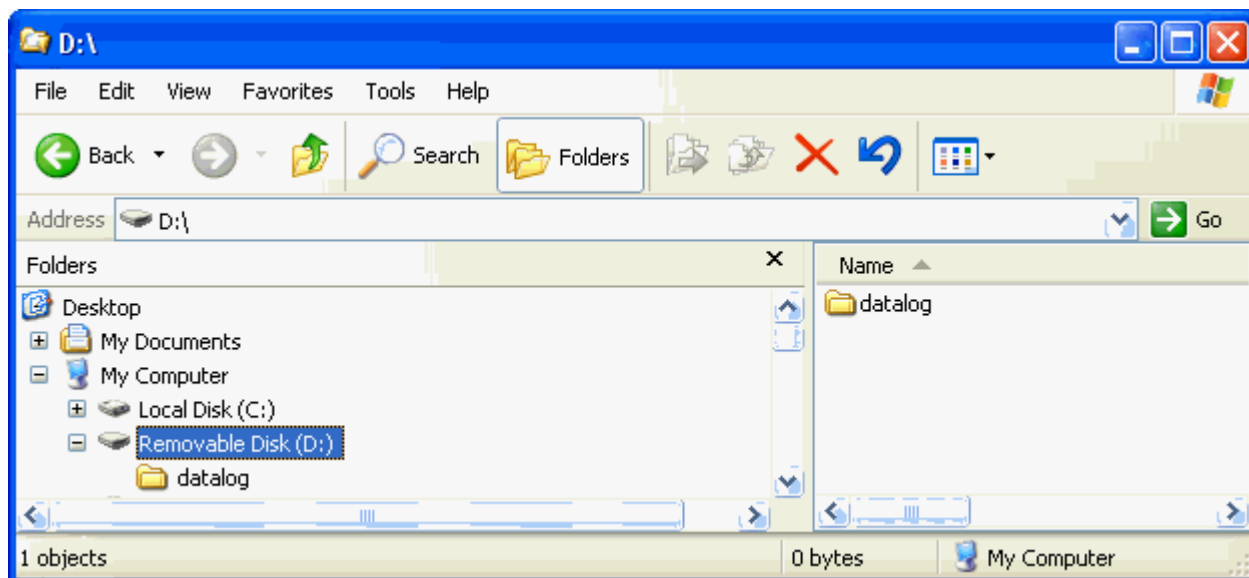
- ✓ At the completion of the file transfer, a confirmation window is provided to allow the user to view the success or failure of the commands sent
- ✓ If the response to [LOGFILE]start is [OK]LOGFILE, then the USB flash drive is logging data
- ✓ Click on the Back arrow
- ✓ Perform the normal survey steps, as needed with the various SurvCE functions



- ✓ When the survey is complete stop the data logging by accessing the same *Send Command* window
- ✓ Enter the command *[logfile]stop* and click on *Send*
- ✓ Observe that the response *[OK]LOGFILE* is received
- ✓ It is safe to remove the USB flash drive at this point.



- ✓ Plug the USB flash drive into a PC and use Windows Explorer to locate the recorded file



- ✓ The logged file is located in the datalog directory and the file naming convention is: *datalog_yyyy_mm_dd_sequence.dat*; where *sequence* is the number of files recorded that day on this receiver.

