

This guide will step you through logging GNSS receiver data to the SF-3050 internal memory port via Carlson Software's SurvCE data collector program. The receiver data may be used for post-processing or troubleshooting.

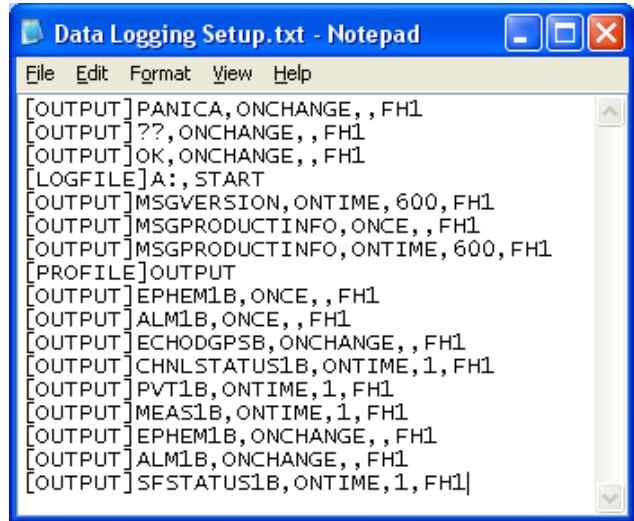
- ✓ SurvCE software version 2.30.47 (Beta release) or later is required for this interface
- ✓ The procedure which follows applies to version 2.0.22.0a or later of SF-3050 firmware

Procedure

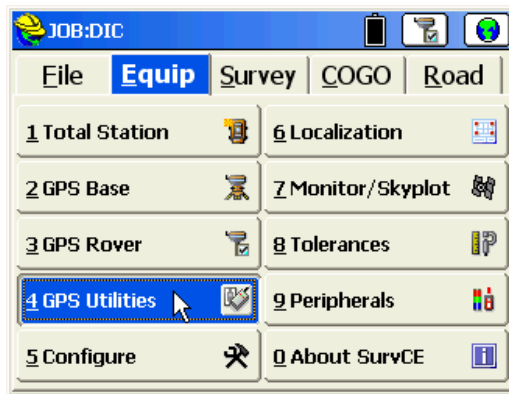
- ✓ Create a data logging command file. A sample file is provided below:

Data Logging Setup.txt:

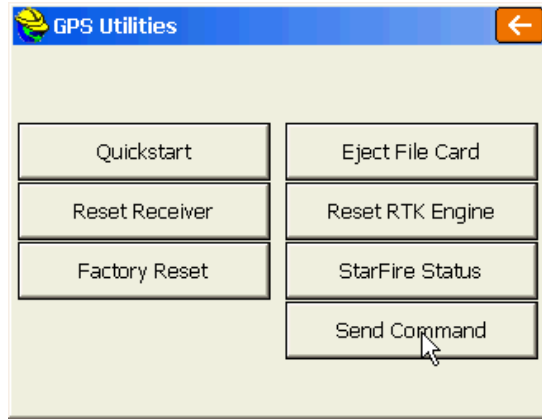
```
[OUTPUT]PANICA,ONCHANGE,,FH1
[OUTPUT]??,ONCHANGE,,FH1
[OUTPUT]OK,ONCHANGE,,FH1
[LOGFILE]A:.,START
[OUTPUT]MSGVERSION,ONTIME,600,FH1
[OUTPUT]MSGPRODUCTINFO,ONCE,,FH1
[OUTPUT]MSGPRODUCTINFO,ONTIME,600,FH1
[PROFILE]OUTPUT
[OUTPUT]EPHEM1B,ONCE,,FH1
[OUTPUT]ALM1B,ONCE,,FH1
[OUTPUT]ECHODGPSB,ONCHANGE,,FH1
[OUTPUT]CHNLSTATUS1B,ONTIME,1,FH1
[OUTPUT]PVT1B,ONTIME,1,FH1
[OUTPUT]MEAS1B,ONTIME,1,FH1
[OUTPUT]EPHEM1B,ONCHANGE,,FH1
[OUTPUT]ALM1B,ONCHANGE,,FH1
[OUTPUT]SFSTATUS1B,ONTIME,1,FH1
```



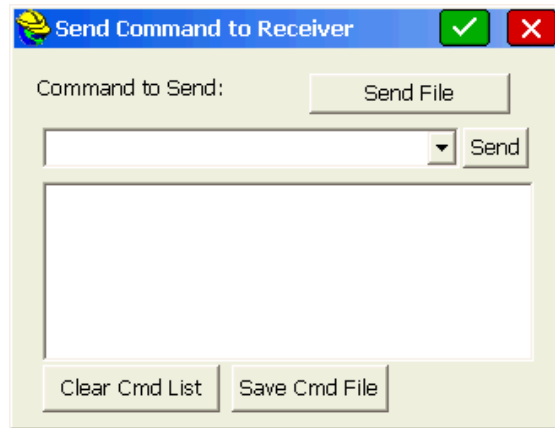
- ✓ Copy this file to the data collector
- ✓ Connect the data collector to the SF-3050 via either the receiver Bluetooth port or Com1 – RS-232
- ✓ Turn the receiver and data collector on and start the SurvCE program
- ✓ Establish a connection between the data collector and the SF-3050 (either Rover or Base, as appropriate)
- ✓ Select the *Equip* tab
- ✓ Click on *GPS Utilities*



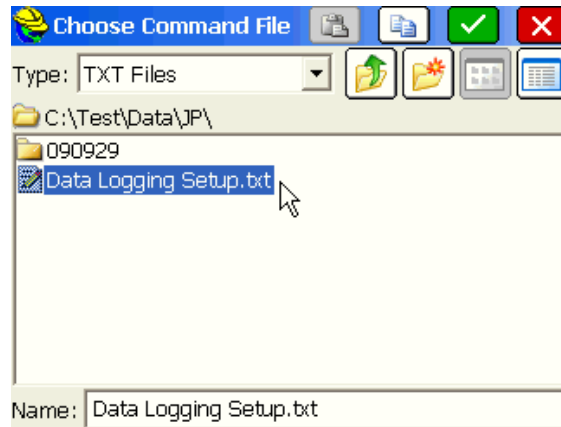
- ✓ Click on *Send Command*



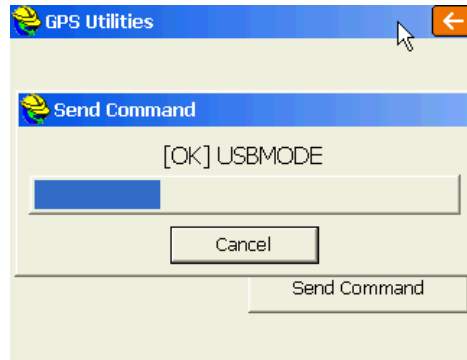
- ✓ Enter the following command:
Prior to logging data the first time,
type the command
[FSFORMAT]A:;DEFAULT
- ✓ Click on *Send*
- ✓ Click on *Send File*



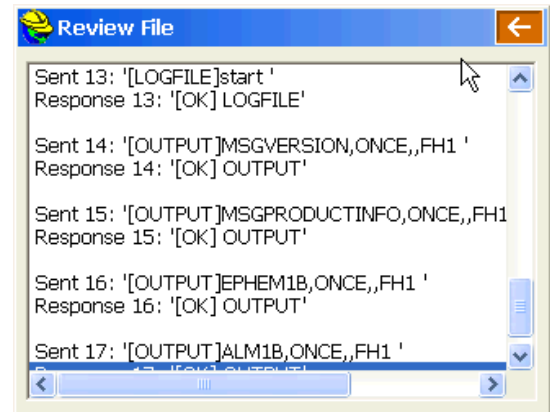
- ✓ Locate the *Data Logging Setup.txt* file and select it
- ✓ Click on the check mark [OK]



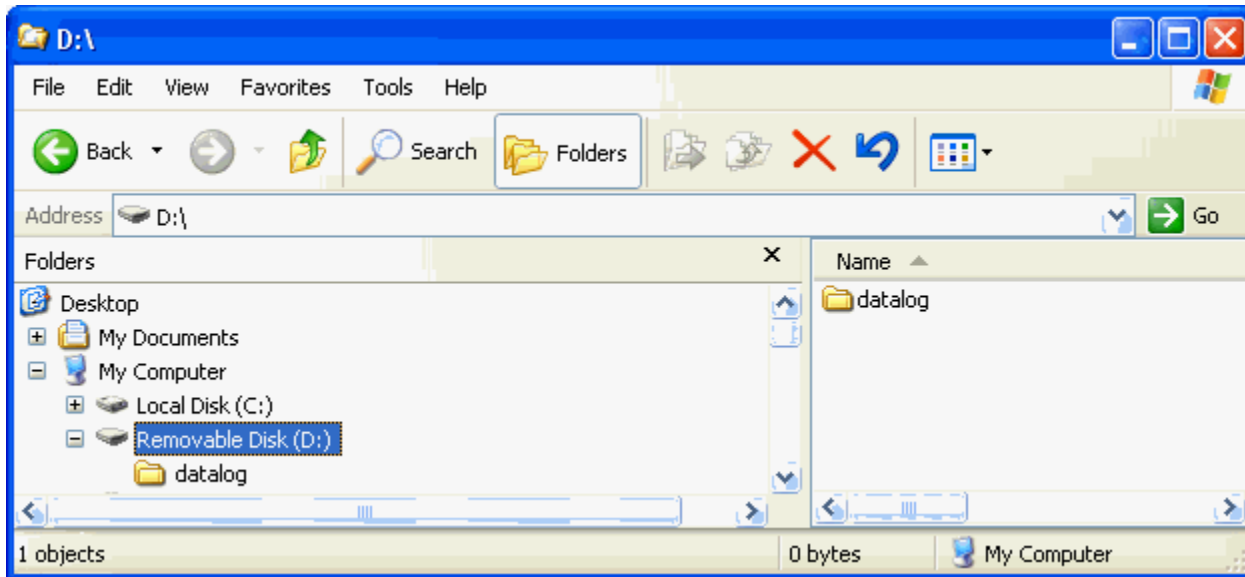
- ✓ The file transfer begins



- ✓ At the completion of the file transfer, a confirmation window is provided to allow the user to view the success or failure of the commands sent
- ✓ If the response to [LOGFILE]A:,START is [OK]LOGFILE, then the internal drive is logging data
- ✓ Click on the Back arrow
- ✓ Perform the normal survey steps, as needed with the various SurvCE functions



- ✓ When the survey is complete stop the data logging by accessing the same *Send Command* window
- ✓ Enter the command *[logfile]a:,stop* and click on *Send*
- ✓ Observe that the response *[OK]LOGFILE* is received
- ✓ Connect to the SF-3050 with the USB cable
- ✓ On the Input Terminal, type *[USBMODE]Device, MassStorage*. The SF-3050 2GB internal memory chip will show in Windows Explorer as an additional “removable” drive.
- ✓ Open the datalog folder on the removable drive and select the folders or files to store on the PC.
- ✓ Drag and drop these folders or files into the designated folder on the PC.
 - Removing data from the internal memory is a slow process, so it is better to keep the files small and remove them soon after data logging is complete. In the current software, downloading 1GB of data requires approximately 1.5 hrs. File sizes are accumulated based on the number and frequency of messages scheduled to log. At 1Hz, a typical log file used for survey purposes will be about 20MB.



- ✓ The logged file is located in the datalog directory and the file naming convention is: datalog_yyyy_mm_dd_sequence.dat; where sequence is the number of files recorded that day on this receiver.

