
Logging Data to Internal Memory or SD Card – SF-3050/SF-3040

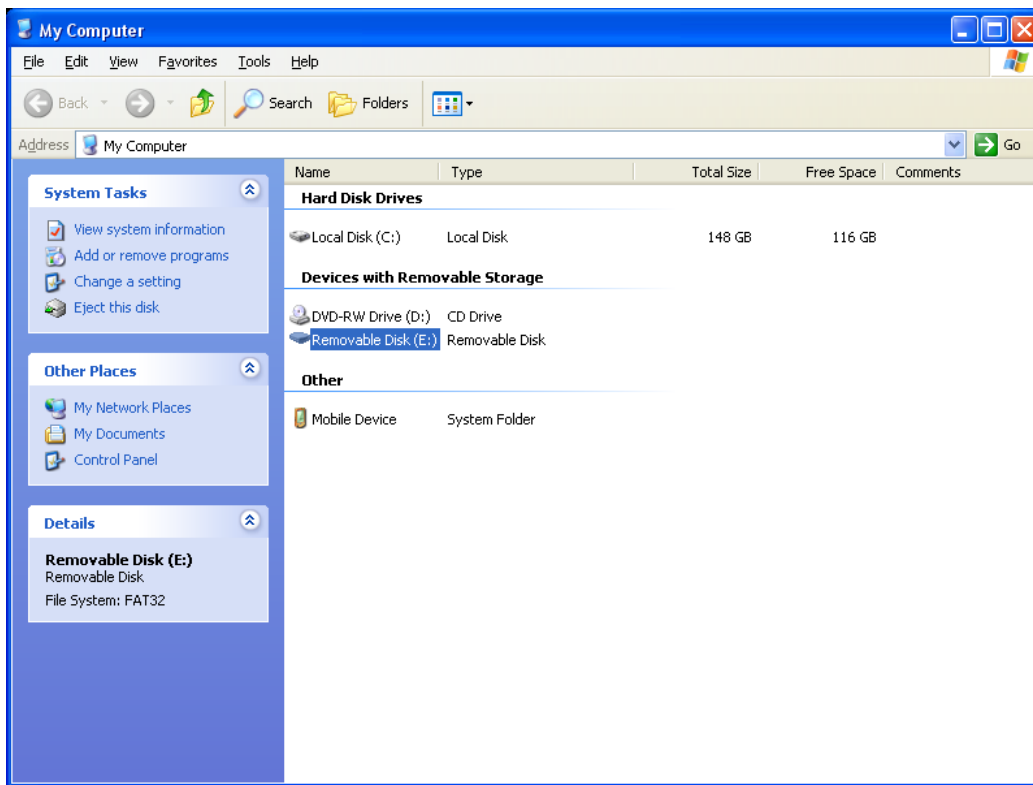
This guide will step you through the process of logging data with StarUtil 3000[®] to the internal memory of the SF-3050[™] receiver and the removable SD card of the SF-3040[™] receiver.


Section 1 - SF-3050 Internal Memory Data Logging

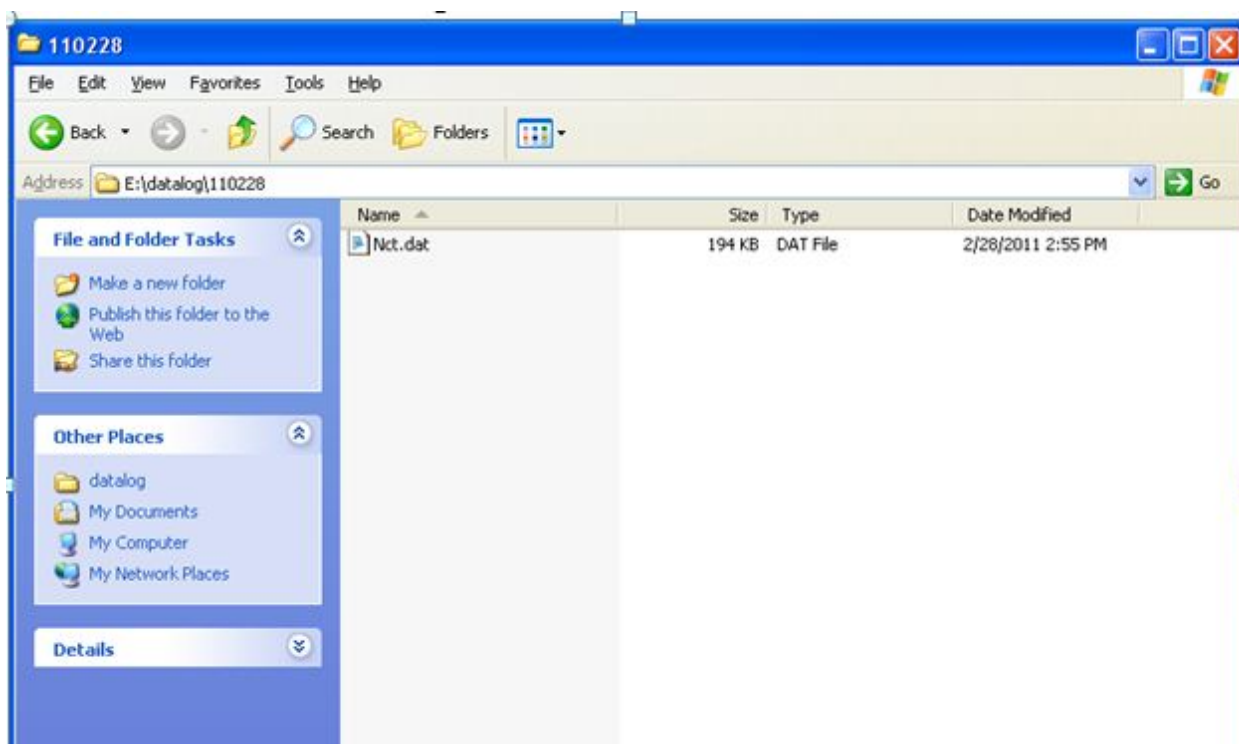
1. Connect StarUtil-3000 to COM 1 of the receiver using the RS-232 cable.
2. From the *Input Terminal* Issue command: [USBMODE]DEVICE,COMPORT
3. Enable the following messages to internal memory:
 - a. [OUTPUT]PVT1B,ONTIME,1,FH1
 - b. [OUTPUT]MEAS1B,ONTIME,1,FH1
 - c. [OUTPUT]EPHEM1B,ONCHANGE,,FH1
 - d. [OUTPUT]ECHODGPSB,ONCHANGE,,FH1
 - e. [OUTPUT]NAVSTATUSA,ONCHANGE,,FH1
 - f. [OUTPUT]A2DA,ONCHANGE,,FH1
 - g. [OUTPUT]ALM1B,ONCHANGE,,FH1
 - h. [OUTPUT]TXRXINFOA,ONTIME,1,FH1
 - i. [OUTPUT]CHNLSTATUS1B,ONTIME,1,FH1
 - j. [OUTPUT]SFSTATUS1B,ONTIME,1,FH1
 - k. [OUTPUT]RTKSTATUS1B,ONTIME,1,FH1
 - l. [OUTPUT]MSGVERSION,ONTIME,60,FH1
 - m. [OUTPUT]MSGPRODUCTINFO,ONTIME,60,FH1
4. To enable auto logging when receiver is powered on and off using the power button on the front LED panel enable: [LOGFILEAUTOSTART]ON
5. Save settings to receiver profile so you don't have to reconfigure messages again after a power cycle: [PROFILE]SAVEAS "XXXX"
6. Start Data logging by issuing the following command:
[LOGFILE]A: ,FORCESTART
7. To Stop Data logging issue the following command: [LOGFILE]A: ,STOP
8. To Start Data restart logging issue the following command:
[LOGFILE]A: ,START

Section 2 - Extracting Data from SF-3050 Internal Memory

1. Connect StarUtil-3000 to COM 1 of the receiver using the RS-232 cable.
2. From the *Input Terminal* issue command:
[USBMODE]DEVICE,MASSTORAGE
3. Connect the USB cable to COM2 of the receiver and to PC.
4. Go to *My Computer*; the internal memory will display as a Removable Disk.
5. Copy all data from internal memory. Delete all data files to free up space.



 Data is located in the “datalog” folder.



Section 3 - Logging Data to Removable SD Card - SF-3040

1. Insert an SD card in the card slot of the receiver.
2. Connect StarUtil-3000 to COM 2 of the receiver using the RS-232 cable, or COM 1 using USB device cable.
3. From the *Input Terminal* Issue command:
 - a. [OUTPUT]PVT1B,ONTIME,1,FH1
 - b. [OUTPUT]MEAS1B,ONTIME,1,FH1
 - c. [OUTPUT]EPHEM1B,ONCHANGE,,FH1
 - d. [OUTPUT]ECHODGPSB,ONCHANGE,,FH1
 - e. [OUTPUT]A2DA,ONCHANGE,,FH1
 - f. [OUTPUT]ALM1B,ONCHANGE,,FH1
 - g. [OUTPUT]TXRXINFOA,ONTIME,1,FH1
 - h. [OUTPUT]CHNLSTATUS1B,ONTIME,1,FH1
 - i. [OUTPUT]SFSTATUS1B,ONTIME,1,FH1
 - j. [OUTPUT]RTKSTATUS1B,ONTIME,1,FH1

-
- k. [OUTPUT]MSGVERSION,ONTIME,60,FH1
 - l. [OUTPUT]MSGPRODUCTINFO,ONTIME,60,FH1
 - m. [OUTPUT]RADIOSTAT,ONTIME,10,FH1
 - n. [OUTPUT]SDCARD,ONCHANGE,,FH1
4. To enable auto logging when receiver is powered on and off using the power button on the front LED panel enable: [LOGFILEAUTOSTART]ON
 5. Save settings to receiver profile so you don't have to reconfigure messages again after a power cycle: [PROFILE]SAVEAS "XXXX"
 6. Start Data logging by issuing the following command:
[LOGFILE]A: ,FORCESTART
 7. To Stop Data logging issue the following command: [LOGFILE]A: ,STOP
 8. To Start Data restart logging issue the following command:
[LOGFILE]A: ,START

Section 4 - Extracting Data from Removable SD Card – SF-3040

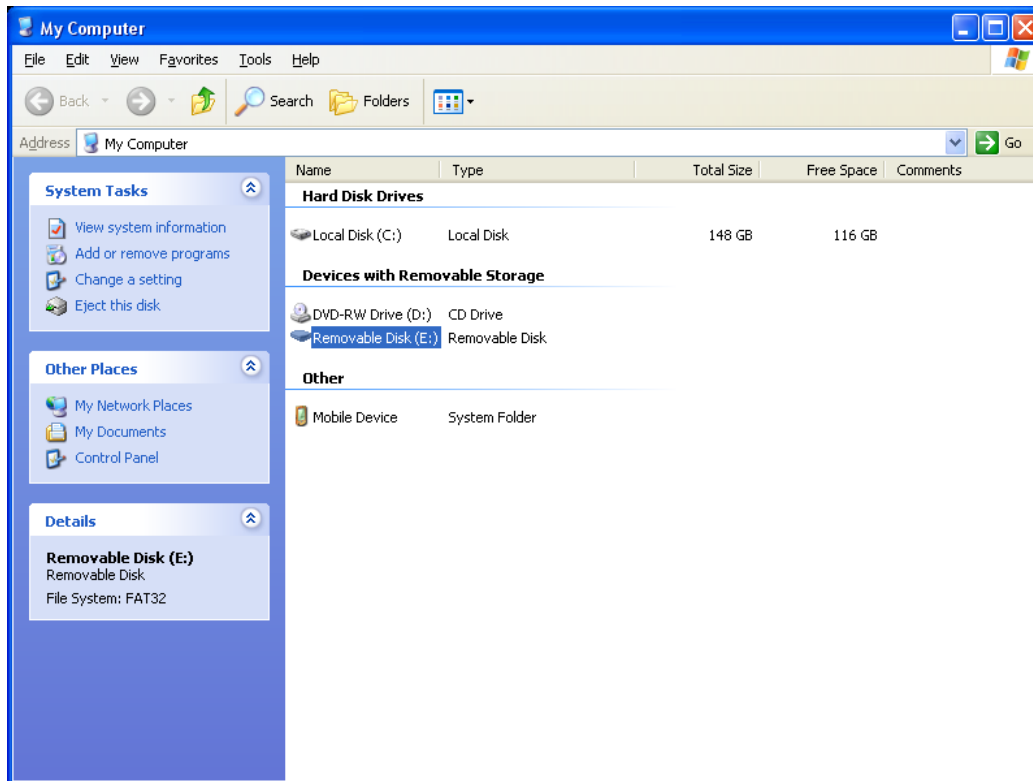
The SF-3040 receiver provides two options to extract data from internal memory with an SD card.

Option 1

1. Open the battery compartment slot and remove the SD card.
2. Install the SD card into a PC reader slot.
3. Browse *My Computer* to view the card as a Removable Disk drive.
4. Download data from the external drive.
5. Copy all data (raw .dat files) from the datalog folder and then delete all data files to free up space.



If your PC does not have a reader, you can use a universal card reader.

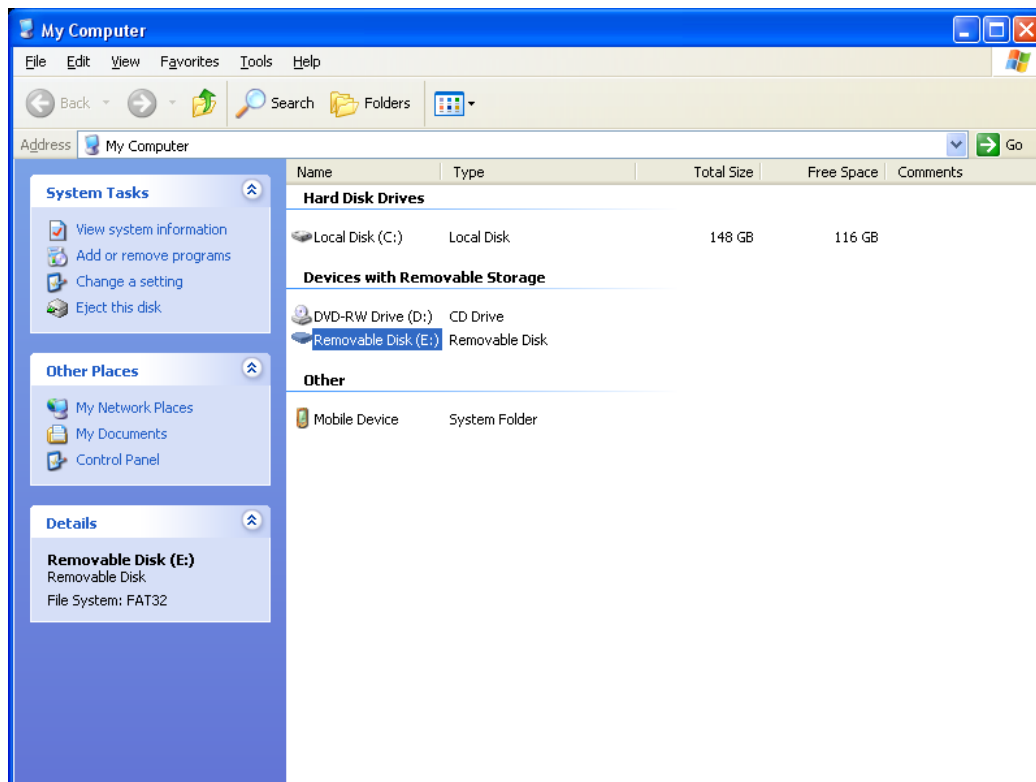


Data is located in the datalog folder.

Section 5 - Extracting Data from SD Card – SF-3040

Option 2 –

1. Connect StarUtil-3000 to COM 2 of the receiver using the RS-232 cable.
2. From the *Input Terminal* issue command: [USBMODE]DEVICE,MASS_STORAGE.
3. Connect the USB cable to COM 1 of the receiver and to the PC.
4. Go to *My Computer*, the SD card will display as a Removable Disk.
5. Download data from the external drive.
6. Copy all data from the datalog folder. Delete all data files to free up space.



Data is located in the datalog folder.