






Software Update

Generation 4 OS installation time: Approximately 40 minutes, with no existing data. Installation time will vary depending on the amount of existing data and the software version currently on the display.

The latest packages for the Generation 4 Displays below can be downloaded and installed over-the-air or using a USB drive and John Deere Software Manager, available on the StellarSupport.com “Software Updates” page. If using Online Display Software Update Process, software download time will vary based on cellular coverage. Reference “Download Instructions” for more help.

John Deere Dealers: Service ADVISOR™ Remote can be utilized if transitioning from Software Update 17-1 to Software Update 17-2.

	Package	Version
	Generation 4 OS	10.9.79-185
	Generation 4 OS Help	10.2.181
	AMS Applications	10.9.79-185

Machine Application Software Updates

Machine Applications located under machine settings in the Gen 4 Display menu. A John Deere dealer will be required to install using Service ADVISOR™.

Release Notes Content

[Important Notes](#)

[Compatibility Notes](#)

[Features/Improvements:](#)

- [Work Setup](#)
- [Variety Locator](#)
- [Tank Mixes](#)
- [Prescriptions](#)
- [Fields and Boundaries](#)
- [Boundary Fill Pattern](#)
- [Straight Track Fill from Boundary](#)
- [Swap Track](#)
- [iTEC™ Recommendations \(AutoLearn\)](#)
- [Implement Profiles](#)

- [Connect Mobile Server](#)
- [Wireless Settings](#)
- [Online Display Software Updates](#)
- [Precision Ag Controller Updates](#)
- [Overlap Control](#)
- [Section Control](#)
- [ISOBUS FileServer](#)
- [Extended Monitor](#)
- [Display Configurations](#)
- [Resolved Issues](#)
- [General Information](#)
- Training

Important Notes

Generation 4 Displays

Software Update 17-2 Release Notes

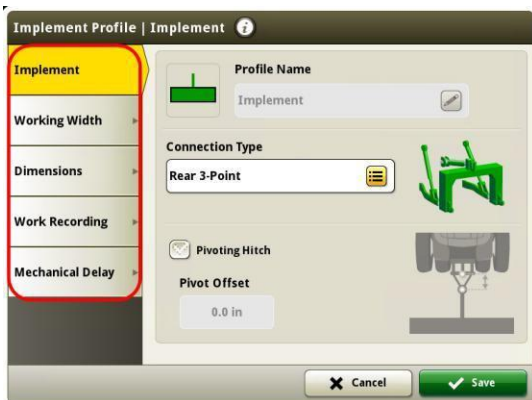
Generation 4 OS 10.9.79-185

Coverage Maps

- Virtual coverage will be cleared from the display during update to software update 17-1 or if updating directly from a version older than software update 17-1 to a version newer than 17-1. All other coverage will persist through the update. [4600 CommandCenter™ Only]

Work Setup

- If a Field is reassigned to a different Client/Farm, the existing field coverage is erased.
- When updating software update 16-2 and older software to software update 17-1 or newer, GRC and Implements without Controller profiles set up as Independent Frames will be deleted. Record all work setup data from each of the pages in implement profile circled in red in the screen below and product name information offline before proceeding with the update to reduce any data loss. This can be done by capturing screenshots of these pages or writing the information down. You will need to re-enter that information in order to proceed with documenting. All other implement profiles that have controllers (i.e. SeedStar™ 2/XP/3HP Planter) will remain on the display through the update. [4100 and 4600 CommandCenter™ only]



- When exporting work data from Gen 4 Displays to Operations Center, field names that exceed 20 characters are shown fully in Operations Center. However, when re-importing this data back into Gen 4, the name will be shortened, but will be recognized by the Gen 4 Display as the same file/data. [4600 CommandCenter™ and 4640 Universal Display only]
- Gen 4 Displays support boundaries created in a GS3 2630 Display, Apex™, and John Deere Operations Center. Imported fields must include an exterior boundary, if also including interior boundary(s) (passable or impassable).
- When documenting in units of sacks or barrels, data sent to John Deere Operations Center will be converted to kilograms. [4600 CommandCenter™ and 4640 only]

ISOBUS

- When using implements where work point is in front of the implement's axle, the implement dimensions will need to be adjusted to reflect the work point being in front of the axle. If the work point is in front of the center of rotation, the work point needs to be set to a negative value. [4600 CommandCenter™ and 4640 only]

Compatibility Notes

This is the compatible equipment approved with the Software Update 17-2 release, and is subject to change with newer software updates. To ensure complete and proper compatibility, the most current version of implement control unit software, Gen 4 Display software, or compatible farm management information software (FMIS) should be used. Non-current software versions will require update before support can be provided. Unapproved software version configurations will not be supported.

Generation 4 Displays

Software Update 17-2 Release Notes

Generation 4 OS 10.9.79-185

Machine Compatibility	Machine Model Year	4600		4100	4640
		V1.0	V2.0		
John Deere Large Ag Tractors					
9R/9RT/9RX Series	2018 and newer		X	X	X
9R/9RT/9RX Series	2015 - 2017	X	X	X	X
9030/9030T Series	2008 and newer				X
8R/8RT Series	2018 and newer		X	X	X
8R/8RT Series	Mid-2014 – 2017	X	X	X	X
8030/8030T Series	2006 and newer				X
7R Series	2018 and newer		X	X	X
7R Series	2014 - 2017	X	X	X	X
7030 Series	2007 and newer				X
7030 Series (Large Frame)	2007 and newer				X
6030, 7030 Series (Small Frame)	2006 and newer				X
6R Series	2018 and newer		X	X	X
6R Series	2015 - 2017	X	X	X	X
John Deere Nutrient Applicators					
F4365 High Capacity	2017 and newer		X		
John Deere Sprayers					
4 Series Sprayers	2018 and newer		X		
John Deere Combines					
S700 Series	2018 and newer		X		
S430, S440	2017 and newer		X		
Competitive Equipment	Please Reference 4640 Ag Sales Manual				X

Equipment/Task Controller	Model Year/Controller Name	Software Version	4600		4100	4640
			V1.0	V2.0		
John Deere Planters*						
SeedStar™ 2	Black PM1	22.00	X	X		X
	Black PA1, (if available PA 2)	22.00	X	X		X
SeedStar™ XP	Black PM1	22.00	X	X		X
	Black PA1, (if available PA 2)	22.00	X	X		X
	PM2	7.00	X	X		X
SeedStar™ 3HP	Planter Main A (PCMA)	4.00	X	X		X
	Planter Main B (PCMB or MMC)	7.00	X	X		X
	Row-unit Controller (RUC)	12.00	X	X		X
	EPG	3.00	X	X		X
SeedStar™ 4HP*	Planter Apps	10.2.159-25		X		X
	Planter Main A (PCMA)	1.0		X		X
	Planter Main B (PCMB or MMC)	1.0		X		X
	Row-unit Controller (RUC)	1.0		X		X
	EPG	1.0		X		X
John Deere Air Seeding*						
C850 Air Cart	Cart Master Controller (CMC)	7	X	X		X
	Mini Tank Controller (TXC)	3	X	X		X

Generation 4 Displays

Software Update 17-2 Release Notes

Generation 4 OS 10.9.79-185

	Front, Middle, Rear Tank Controller (TCU)	3	X	X		X
1870 Seeding Tool	2017 and newer	2	X	X		X
TruSet™	2017 and newer (IDC)	3.00	X	X		X
RelativeFlow™ Blockage	2017 and newer (BMU)	1.00	X	X		X
1910 Air Cart						
Ground Drive	2009 and newer	3.00	X	X	X	X
Hydraulic Drive (One Section)	2013-2014	5.05	X	X	X	X
Hydraulic Drive (SectionCommand™)	2015 and newer	5.05	X	X	X	X
Hydraulic Drive AirPower™ 2	2017 and newer	5.01	X	X	X	X
Seeding Tools with Air Run Blockage						
Primary Blockage	2009 and newer (BMU)	10.01	X	X	X	X
All Run Blockage	2009 and newer (BMU)	10.01	X	X	X	X
	Member Module	5.00	X	X	X	X
1990 CCS™	2009 and newer (BMU)	11.00	X	X	X	X
John Deere Tillage						
AccuDepth™		11	X	X	X	X
TruSet™						
2730		1.63A	X	X	X	X
2230 and 2330		1.72E	X	X	X	X
John Deere Balers						
Baler Automation		7.16	X	X	X	X

*See additional information below

Precision Ag Technology Controllers	Controller Name	Software Version	4600		4100	4640
			V1.0	V2.0		
StarFire™ Receivers*						
StarFire™ 6000		Compatible	X	X	X	X
StarFire™ 3000		Compatible	X	X	X	X
Modular Telematics Gateways (MTG)*						
3G		21.01	X	X	X	X
4G LTE		22.01	X	X	X	X
GreenStar Rate Controller		3.50A	X	X		X
GreenStar Rate Controller Dry		2.20A	X	X		X
John Deere Rate Controller 2000*		1.08B	X	X		X
AutoTrac™ Universal* 200		2.30A				X
AutoTrac™ Controller*		1.11B				X
Active Implement Guidance	Application 1100	2.71T	X	X	X	X
iGrade™*	Application 1100	2.71T	X	X	X	X
Wireless Data Server Apps*	Wireless Data Server	1.422.1	X	X		X
	Connect Mobile App*	4.0.0.3	X	X		X

*See additional information below

John Deere Planters

SeedStar 4HP Planters are only compatible with 4600 CommandCenter with a version 2 (V2.0) processor and 4640 Universal Displays. Verify that the latest software of Generation 4 OS available is being used. When using a 4600 CommandCenter, tractor updates should also be updated to the latest Tractor Applications. If multiple monitors are needed, utilize Gen 4 Extended Monitor. Dual display mode is not available for use with SeedStar 4HP Planter Applications at this time.

The SeedStar™ 2 configuration above is available only on factory-installed Model Year 2011 and newer planters, and may be field-installed on MY2009-10 planters. **Green** PM/PA controllers (factory-installed on MY2009-10 planters) are not supported with a Gen 4 Display.

John Deere Dealers: Service ADVISOR™ is needed to update SeedStar™ 2, XP, and 3HP software.

Documentation for planters without clutches are not supported on Gen 4 Displays.

John Deere Air Seeders

The C850 Air Cart requires a 4600 CommandCenter™ or a 4640 Universal Display. GreenStar™ 3 2630 monitors are not supported.

StarFire™ Receivers

StarFire™ Receivers can be updated in the following ways:

- Gen 4 Display USB port.
- Remote Software Updates application (in ISOBUS VT app)
- GreenStar™ Display
- Service ADVISOR™ (John Deere Dealers only).
- Receiver USB Port (available only for StarFire™ 6000)

Additionally, StarFire™ ITC Receivers are no longer supported with software update 17-1 and newer software.

John Deere Operations Center

Activations/Subscriptions Required for Wireless Data Transfer:

- CommandCenter™ Premium activation or Core Subscription are required to wirelessly transfer files.
- JDLink™ Ultimate + WDT + RDA or JDLink™ Connect subscription

To use Remote Display Access (RDA) on a Gen 4 CommandCenter™ with GreenStar™ 3 2630 Display connected in the same machine, GS3 2630 software version 3.22.1095 (software update 14-1) or higher is required. [4600 CommandCenter™ and 4640 only]

GreenStar™ Rate Controller and GreenStar™ Rate Controller Dry

GreenStar™ Rate Controller Dry is supported with the 4600 CommandCenter™ starting with Software Update 17-2. The 4600 CommandCenter™ and 4640 Universal Display support documentation and section control of up to 5 GreenStar™ Rate Controllers.

To update the GreenStar™ Rate Controller and GreenStar™ Rate Controller Dry, utilize Gen 4 Display USB port

Generation 4 Displays

Software Update 17-2 Release Notes

Generation 4 OS 10.9.79-185

or use a GreenStar™ 2 or 3 display. John Deere dealers can also utilize Service ADVISOR™.

John Deere Rate Controller 2000

The 4600 CommandCenter™ and 4640 Universal Display support documentation of up to 4 operations from John Deere Rate Controller 2000. It is important to note that John Deere Rate Controller 2000 can control up to 5 operations and may be used for liquid or dry application.

John Deere Rate Controller 2000 needs to be the only ISO controller present when used with the 4600 CommandCenter™. Implements equipped with controllers such as SeedStar™ on John Deere planters or TruSet™ on tillage equipment are not compatible to be used in conjunction with the JDRC2000. Shared Sections, which are commonly used during Direct Inject applications are not supported at this time.

For more information on Gen 4 CommandCenter™ and John Deere Rate Controller 2000 compatibility, please visit the [John Deere Ag Sales Manual](#).

Implements without Controllers

Implements without controllers can be documented as a stand-alone operation or with a GRC. Implements without controllers cannot be documented in conjunction with a John Deere Rate Controller 2000 or any other implement control units. Multiple implements without controllers cannot be documented together.

AutoTrac™ Universal 200 and AutoTrac™ Controller

AutoTrac™ Universal 200 and AutoTrac™ Controllers are for use with the 4640 Universal Display. The 4640 Universal Display is only compatible with tractors. Please see the AutoTrac™ Controller Sales Manual for exact model compatibility. These products are compatible with ATC Raven, ATC Richardt and ATC John Deere kits.

iGrade™

iGrade™ compatibility with Gen 4 Displays has not been tested with third party control software.

Wireless Data Server Apps

When updating the SeedStar™ Mobile App with the latest software, a new name for the app, Connect Mobile will appear in addition to any improvements to the app. Please note, Harvest Mobile is not compatible with the 4640 at this time.

ISOBUS Implements

A software update performed by an authorized ISOBUS implement dealer may be required to obtain compatible software. ISOBUS Implements must be certified through the AEF Organization to be recognized by the Gen 4 CommandCenter™. Visit www.aef-online.org for more information; visit www.aef-isobus-database.org for an active list of compatible implements.

ISOBUS Implements with VT 4 are now supported by Gen 4 Displays. Gen 4 Displays still support older VT versions (Example: VT2 and VT3). If an implement is not loading after updating to Gen 4 software update 17-2, it is recommended that the implement manufacturer be contacted to get a software version that is either VT3 or VT4.

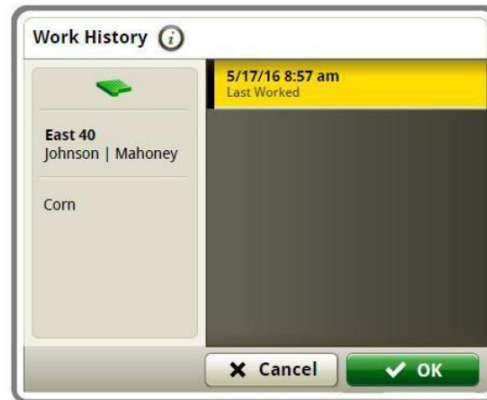
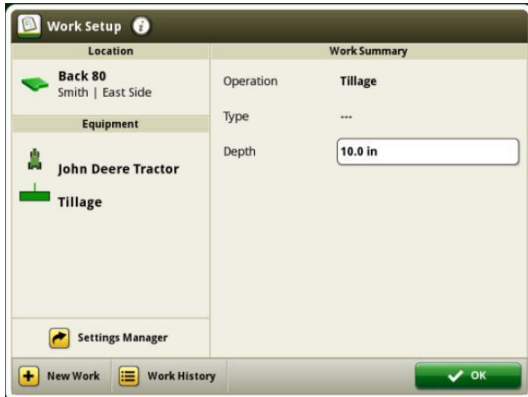
Non-John Deere Precision Ag

- Gen 4 Displays are not compatible with RS232 communication at this time.
- Gen 4 Displays are also not compatible with DN345 at this time.

New Features and Improvements



Work Setup – Work history allows operators to reference all completed coverage within a field. Import coverage from another Gen 4 display to finish a field in a different machine and utilize section control with imported coverage. Totals and as-applied data are not able to be utilized. [4600 CommandCenter™ and 4640 Universal Display only]



Variety Locator - Data can be shared from planting season to combines equipped with Gen 4 CommandCenter™ in software update 17-2. [4600 CommandCenter™ and 4640 Universal Display only]

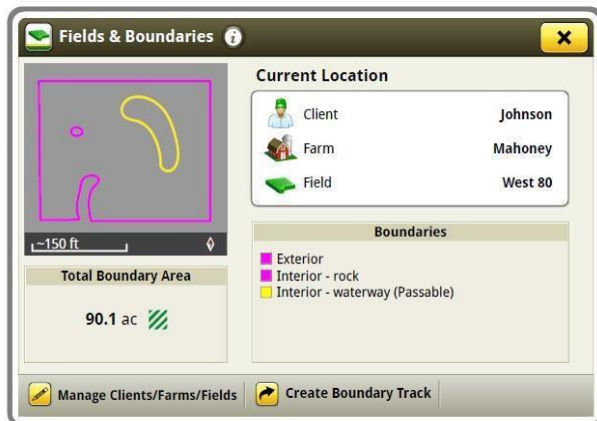
Tank Mixes –Tank mix setup files can be exported to Operations Center. [4600 CommandCenter™ and 4640 Universal Display only]



Prescriptions - In software update 17-2, prescriptions can be deleted in bulk through the File Manager App. [4600 CommandCenter™ and 4640 Universal Display only]

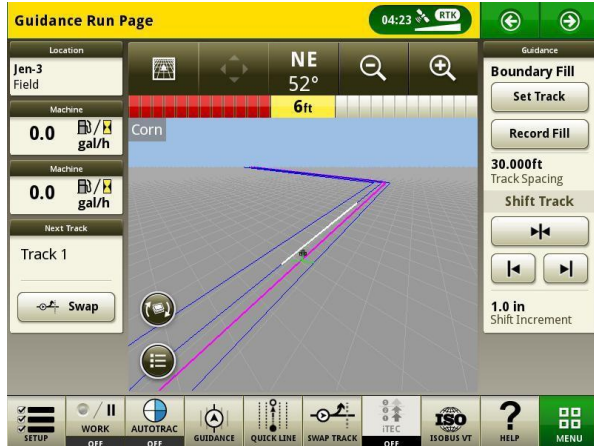


Fields and Boundaries – Boundaries can be created by manually driving the perimeter of the field in software update 17-2. This functionality will allow operators to pause recording during boundary creation and move to another end of the boundary area to resume recording again. The system will generate a line between the two points to finish the boundary.

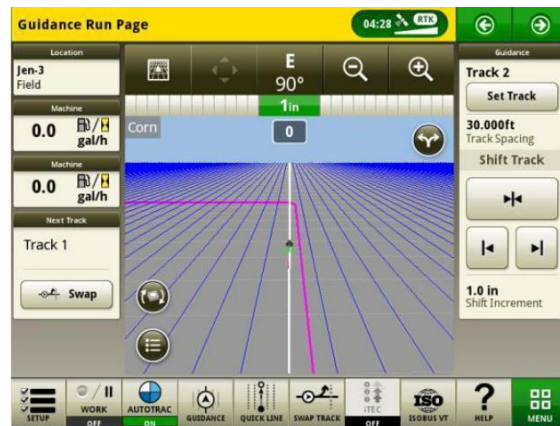


Boundary Fill Pattern – As part of software update 17-2, guidance tracks can now be created from field boundaries. These guidance tracks use the logic of adaptive curve tracks and are generated from boundaries created from coverage

or imported boundaries. Once created, 3 lines will be viewed: the active guidance line and the guidance lines to the right and left of the active line. When moving inward, an additional lines will be created. If boundary track is selected as current track it will remain on the display as an adaptive curve. If not, it will be deleted with the boundary it was generated from.



Straight Track Fill from Boundary – An A+B Straight track can easily be created when AutoTrac™ is used with boundary fill pattern. When ‘Record Fill’ is used on a Boundary Fill track, A+B straight tracks are created to fill the inside of the boundary and tracks created from the boundary. Tracks must be selected from track list once generated.



Swap Track – Operators can now switch between an active guidance line to the next guidance line in their track list using the Swap Track button in software update 17-2.



iTEC™ Recommendations (AutoLearn) – When AutoLearn is toggled on, the iTEC™ system will learn every action that the operator takes. When the same patterns of actions are found, AutoLearn creates a new sequence with these actions and recommends that it be assigned to an iTEC™ button for use.



Implement Profiles – All planter and air seeding tool profiles will appear in the same implement profile format as implements without controllers in software update 17-2. It is important to note that implement profiles cannot be imported from Operations Center. [4600 CommandCenter™ and 4640 only]

Connect Mobile Server – Connect Mobile and Harvest Mobile software has been integrated into the display starting with software update 17-2. This means that when the Gen 4 Display is updated to software update 17-2, the Wireless Data

Generation 4 Displays

Software Update 17-2 Release Notes

Generation 4 OS 10.9.79-143

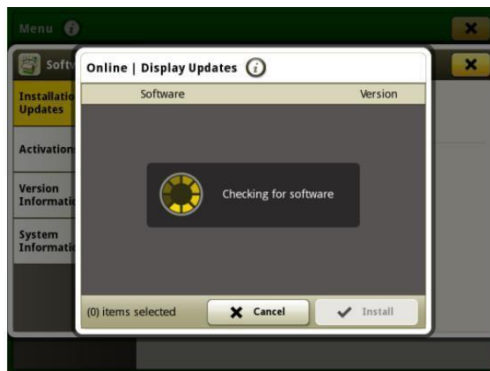
Server hardware will no longer be necessary. The Wireless Settings App can be used to connect a display to Connect Mobile.



Wireless Settings App – This app allows your machine to connect to a wireless network. When connected to a wireless internet connection, it can be used with DataSync to send files to John Deere Operations Center. This app can also be used for online software updates. Please note that the Wireless Settings App will only appear if the machine is capable of utilizing the app. Additionally, the wireless network must have a security type of Open or Secure (WPA2-PSK) in order to successfully connect your machine to the network. Network security type can be viewed in the wireless setting app. The SolutionsPlus Mobile App should not be used with the Wireless Settings App.



Online Display Software Updates – Updating display software over the air was introduced in software update 17-1. If updating software from software update 17-1 to software update 17-2, select the “Check for updates online” option. Once done checking, select the software available to download and select install. Gen 4 OS Software can be updated online through use of a cellular network or wireless connection.



Precision Ag Controller Updates – Precision Ag Controllers can be updated through the Gen 4 CommandCenter™ or 4640 Universal Display USB port. The apps can be updated are: GreenStar™ Rate Controller, GreenStar™ Rate Controller Dry, StarFire™ 3000, StarFire™ 6000, iGrade™ and Active Implement Guidance. Controller software can still be loaded to USB from GSLive Update using the same steps as done when updating controllers through the GS3 2630 Display.



Overlap Control – Overlap Control is available for MY'18 Combines with software update 17-2. This allows combines to document acres harvested more accurately by dividing the combine front end equipment into sections. [4600 CommandCenter™ only]

Section Control supports up to 5 operations with 16 sections each on John Deere equipment and up to 255 sections on AEF TC-SC certified ISOBUS implements. Section Control also supports multiple implements and work points or section offsets (Third-party ISOBUS implements). [4600 CommandCenter™ and 4640 Universal Display only]



ISOBUS FileServer – In software update 17-2, ISOBUS controllers are able to offload extra data onto the Gen 4 Display to support the operator with implement setup. Examples of data that can be offloaded are: fertilizer tables and configurations.

Gen 4 Extended Monitor – An extended display is available in 2017. This can be used to view multiple run pages at one time. Please note the extended display does not have its own processor. It instead uses the existing Gen 4 Display's processor to display information. Extended Monitor is not a configurable option in Dual Display

Generation 4 Displays

Software Update 17-2 Release Notes

Generation 4 OS 10.9.79-185

Settings. Remote Display Access session does not view extended monitor. [4600 CommandCenter™ and 4640 Universal Display only]

If using a Gen 4 Extended Monitor with a 4600 CommandCenter™, Gen 4 OS software and Tractor Applications will need to be updated by a John Deere Dealer during installation.



Display Configuration (Dual Display Settings) – The chart below lists various features within the Gen 4 Display and whether or not they will appear or function in the Gen 4 Display based on a specific display configuration.

Applications Tab	Gen 4 Display Configurations ^{^*}			
	Single Display	Implement Viewer Mode	Precision Ag Applications	Machine Only
Automation Status	✓	✓	✓	✓
AutoTrac™ Guidance	✓	✗	✓	✗
Calculator	✓	✓	✓	✓
Equipment Manager	✓	✗	✓	✗
Fields & Boundaries	✓	✗	✓	✗
Help	✓	✓	✓	✓
ISOBUS VT	✓	✓	Visible, Not Functional**	Visible, Not Functional**
Layout Manager	✓	✓	✓	✓
Machine Monitor	✓	✓	✓	✓
Mapping	✓	✗	✓	✗
Remote Access	✓	✓	✓	✓
Section Control	✓	✗	✓	✗
Settings Manager	✓	✓	✓	✓
StarFire™	✓	✓	✓	✓
Video	✓	✓	✓	✓
Work Monitor	✓	✗	✓	✗
Work Setup	✓	✗	✓	✗
Work Totals	✓	✗	✓	✗

[^]The 4640 Universal Display cannot be used in dual display mode with the GS3 2630 Display or the GS2 1800 Display.

* If utilizing extended monitor with a Gen 4 CommandCenter™, the extended monitor will show apps that the Gen 4 CommandCenter™ is configured to show.

**Visible, Not Functional: ISOBUS VT App will appear, but when selected will show the message, “No ISOBUS implements are currently connected.”

Resolved Issues/Informational Items

The following issues will be fixed with software update 10.9.79-185:

- Active Implement Guidance has a delay when acquiring the line or decreased performance
- Generation 4 Displays only show undefined trouble codes for controllers on implement CAN bus instead of diagnostic troubleshooting steps
- Swedish iTEC™ Help Files are in Slovenian
- File Server was communicating on CAN bus when turned off

- Generation 4 Display has coverage map gaps with AEF certified ISO bus implement controllers
- Section control would not turn on valves or row units to cover small map gaps due to long mechanical delay on-times
- PTG ISOBUS Controller does not show up in ISOBUS VT on a key cycle
- TruSet Tillage does not document negative depth values
- Japanese and Russian translations for iTEC™ are incorrect on the Gen 4 CommandCenter™ with 17-2 software (10.9.79-111 or 10.9.79-143)
- Russian translations for ISOBUS Controllers are Incorrect
- Generation 4 Displays do not switch from mph or kph when machine is in slow/creeper AutoTrac Guidance mode

The following issues will be fixed with software update 10.9.79-143:

- When setting up a higher VT priority of 2, the priority changes back after cold boot
- Guidance line track list takes a long time to load
- Equipment Manager application does not allow for lateral offsets less than 1 inch (0.03 m)
- Camera application shows black screen after key cycle.
- Displays have long start up (boot) times
- No Swedish translations are available within Onscreen Help
- Displays have instances of lost coverage map and documentation
- Front Hitches documentation precision and accuracy has been enhanced



Data Management

Selecting Import Data, Export Data, or the File Manager app may result in a 5-15 second delay to load the File Manager app.

Importing

- Gen 4 CommandCenter™ does not import machine or implement profiles.
- To import prescriptions, shapefiles must be located in “Rx” folder at root of USB drive.
- When importing field boundaries, a field must include an Exterior boundary, in order to import Interior boundary(s).
- USB files including pre-assigned Apex™ Tasks and iTEC™ Pro sequences will not import into the CommandCenter™.

Exporting

- When exporting work data, use a separate USB drive for each Gen 4 CommandCenter™. Exported Gen 4 work data cannot be placed in individual profile folders. Exported “Setup” data is placed in the “JD4600” folder. Exported “Work” Data is placed in the “JD-Data” folder.
- When exporting data, Gen 4 CommandCenter™ may pause for ~15-20 seconds before progressing with export functions. Do not remove power or USB drive during this time.
- An operator cannot export a field boundary to a USB drive which already contains that boundary, even if it’s within a different profile.

Exporting for use with a GreenStar™ 3 2630 Display

- Gen 4 CommandCenter™ setup profiles do not include Machine/Implement Profiles, which are needed by a GS3 2630 Display. Before exporting Gen 4 CommandCenter™ profiles for use in a GS3 2630:
 1. Export data from the GS3 2630 Display with the profile name “JD4600”.

2. Using the same USB, export Setup Data from the Gen 4 CommandCenter™. All data will be merged into the JD4600 profile folder.
3. Import “JD4600” profile into the GS3 2630 Display.

Within John Deere Operations Center

- Implements without controllers, only tillage, product application and planting/seeding show up
- If planning to manage data in John Deere Operations Center, properly document Client, Farm, and Field information when performing work.
- Gen 4 CommandCenter™ Work data such as seeding, application, harvest and boundary information, can be directly imported into John Deere Operations Center.
 - “Automatically Sync Work Data” is enabled on Gen 4 CommandCenter™ through Data Sync. It sends Work Data files to “Field Analyzer” in Operations Center.
 - “Manually export to Operations Center” is enabled on the Gen 4 CommandCenter™ through Wireless Data Transfer. It sends Work Data to “Files” in Operations Center.

Compatibility with Farm Management Information Software

- Gen 4 CommandCenter™ Work Data is not compatible with, and cannot be viewed in Apex™.
- Prescriptions created in Apex™ must be exported in the shapefile format.
- ☒ If sharing files for use in other third party FMIS solutions, export data from John Deere Operations Center as point-based shapefiles. Most third-party FMIS solutions support point-based shapefiles.



General Information

- Software activations are non-transferrable, in the event of lost, stolen, or destroyed equipment. It is recommended to insure machines with a Generation 4 CommandCenter™ at full value, including software activations.

Software Updates

- Before updating software, it is recommended to export all existing data to USB drive when updating Gen 4 CommandCenter™ software from software update 15-2 (8.12.2500-17) and prior. All existing map coverage on CommandCenter™ will be erased when updating from these versions. Work Monitor values will not be reset.
- If updating from Generation 4 OS version software update 14-2 (8.11.2456-13) or prior, Machine and Work Monitor page modules may appear blank. To restore values, access Layout Manager App, edit the run page, delete the Machine and Work Monitor modules, and re-add the desired modules. For default run pages, copy the page, and repeat these steps.

Section Control

- While applying/seeding, it is recommended that mechanical delay settings not be adjusted on-the-go to reduce potential instances of gaps in coverage. [4600 CommandCenter™ and 4640 only]

Dual Display Configuration

- Enable Precision Ag (GreenStar™ or AMS) Applications on one display only. Guidance and other applications will not function properly when multiple displays have AMS Applications enabled.

Variable-Rate Prescriptions

- Variable-rate prescriptions can be assigned to a Field. This will make them appear in the “Current Location” tab when selecting a prescription to use.

AB Curve Radial Shift Functionality

- Center Shift was disabled to ensure consistent placement of the re-generated AB Curves. Use Left/Right Shift Track and track spacing to adjust the location of your track in the field. [4100/4600 CommandCenter™].

ISOBUS

- Gen 4 CommandCenter™ supports 1 AEF certified ISOBUS Control Unit. When selecting ISOBUS VTSplit Screen Modules in the Layout Manager for run page creation, some modules may show “Initializing” instead of the preview with the module content.
- Creating a run page with a full-size and vertical split screen ISOBUS VT module for the same implement or controller is not recommended. The vertical split screen module may not properly react to user inputs when both are on the same run page.
- Cycle machine key power and allow CommandCenter™ to completely power down when connecting/disconnecting ISOBUS implements.



Training

Onscreen Help - Onscreen help supplements the information found in the Operator's Manual. Press the Information icon at the top of any page to view relevant help information for that page. When viewing help, press the Book icon under Table of Contents to view all other available content related to the given page. Gen 4 CommandCenter™ Onscreen Help is now available on displaysimulator.deere.com.



Training Simulators - To learn more about the Generation 4 Displays, there is an online Training Simulator available for download under the Parts & Service Menu in the Manuals & Training Page in displaysimulator.deere.com.

John Deere Global Support Center

Web: www.StellarSupport.com

The Global Support Center supports customers with valid AMS Support Agreements and John Deere Dealers. Information for all supported countries can be found at StellarSupport™ under the "[Contact Us](#)" section.

Release Notice

These are Generation 4 OS and AMS Applications software update release notes for the Generation 4 Displays. Release notes can be found on www.stellarsupport.com. Note: Your use of the software is governed by the End User License Agreement included with the software.

Copyright © 1996-2018 Deere & Company