







Software Update


Generation 4 OS installation time: Approximately 40 minutes, with no existing data. Installation time will vary depending on the amount of existing data and the software version currently on the display. Reference “Download Instructions” for more help.

John Deere Dealers: Service ADVISOR™ Remote is not recommended for this update.

The latest Packages for the Generation 4 CommandCenter™ below can be installed using a USB drive and John Deere Software Manager, available on the StellarSupport.com “Software Updates” page.

	Package	Version
	Generation 4 OS	10.8.333-85
	Generation 4 OS Help	10.2.130-1
	AMS Applications	10.8.333-85
	Tractor Application Help	10.2.108-1

Machine Applications updates will require a John Deere dealer to install using Service ADVISOR™.

	Tractor Applications A
--	------------------------

Release Notes Content

[Important Notes](#)

[Compatibility](#)

[New Features/Improvements:](#)

- [Section Control](#)
- [Implement Profiles](#)
- [Wireless Settings App](#)
- [Online Display Software Updates](#)
- [Precision Ag Controller Updates](#)
- [Maps](#)

- [Active Implement Guidance](#)

- [Layout Manager Page Modules](#)

- [ISOBUS Tasks/Select Tasks](#)

- [Gen 4 Extended Monitor](#)

- [Display Configuration](#)

[General Information](#)

[Training](#)

Important Notes

Coverage Maps

- Virtual coverage will be cleared from the display during update to SU2017-1. All other coverage will persist through the update.

Work Setup

- If a Field is reassigned to a different Client/Farm, the existing field coverage is erased.

- When updating software to SU2017-1, GRC and Implements without Controller profiles set up as Independent Frames will be deleted. Record all work setup data from each of the pages in implement profile circled in red in the screen below and product name information offline before proceeding with the update to reduce any data loss. This can be done by capturing screenshots of these pages or writing the information down. You will need to re-enter that information in order to proceed with documenting. All other implement profiles that have controllers (i.e. SeedStar™ 2/XP/3HP Planter) will remain on the display through the update.



- When exporting work data from Gen 4 CommandCenter™ to Operations Center, field names that exceed 20 characters are shown fully in Operations Center. However, when re-importing this data back into Gen 4, the name will be shortened, but will be recognized by the Gen 4 CommandCenter™ as the same file/data.
- Gen 4 CommandCenter™ supports boundaries created in a GS3 2630 Display, Apex™, and John Deere Operations Center. Imported fields must include an exterior boundary, if also including interior boundary(s) (passable or impassable).

Section Control

- While applying/seeding, it is recommended that mechanical delay settings not be adjusted on-the-go to reduce potential instances of gaps in coverage.

Dual Display Configuration

- Enable Precision Ag (GreenStar™ or AMS) Applications on one display only. Guidance and other applications will not function properly when multiple displays have AMS Applications enabled.

ISOBUS

- When using implements where work point is in front of the implement's axle, the implement dimensions will need to be adjusted to reflect the work point being in front of the axle. If the work point is in front of the center of rotation, the work point needs to be set to a negative value.
- Gen 4 CommandCenter™ supports 1 AEF certified ISOBUS Control Unit. When selecting ISOBUS VT Split Screen Modules in the Layout Manager for run page creation, some modules may show "Initializing" instead of the preview with the module content.

Compatibility Notes

This is the compatible equipment approved with the Software Update 2017-1 release, and is subject to change with newer software updates. To ensure complete and proper compatibility, the most current version of implement control unit software, GreenStar™ Display software, or compatible farm management information software (FMIS) should be used. Non-current software versions will require update before support can be provided. Unapproved software version configurations will not be supported.

Machines	Machine Model Year
John Deere Large Ag Tractors	
9R/9RT Series	2015 and newer
8R/8RT Series	Mid-2014 and newer
7R Series	2014 and newer
6R Series	2015 and newer
John Deere Nutrient Applicators	
F4365 High Capacity	2017 and newer

Equipment/Task Controller	Model Year/Controller Name	Software Version
John Deere Planters*		
SeedStar™ 2	Black PM1	22.00 or higher
	Black PA1, (if available PA 2)	22.00 or higher
SeedStar™ XP	Black PM1	22.00 or higher
	Black PA1, (if available PA 2)	22.00 or higher
	PM2	7.00 or higher
SeedStar™ 3HP	Planter Main A (PCMA)	3.00 or higher
	Planter Main B (PCMB or MMC)	5.00 or higher
	Row-unit Controller (RUC)	8.00 or higher
John Deere Air Seeding*		
1910 Air Cart		
Ground Drive	2009 and newer	3.00 or higher
Hydraulic Drive (One Section)	2013-2014	5.05 or higher
Hydraulic Drive (SectionCommand™)	2015 and newer	5.01 or higher
Seeding Tools with Air Run Blockage	2009 and newer	10.01 or higher
1990 CCS™	2009 and newer	10.03 or higher
John Deere Tillage		
AccuDepth™		11 and newer
TruSet™		1.55B and newer
John Deere Balers		
Baler Automation		7.16 and newer

*See additional information below

AMS Controllers	Controller Name	Software Version
StarFire™ Receivers*		
StarFire™ 6000		Compatible
StarFire™ 3000		Compatible

Modular Telematics Gateways (MTG)*		
3G		16.01 or higher
4G LTE		20.05 or higher
GreenStar Rate Controller*		3.50A or later
John Deere Rate Controller 2000*		1.05U or later
Active Implement Guidance	Application 1100	2.71L or later
iGrade™*	Application 1100	2.71L or later
Wireless Data Server Apps*	Wireless Data Server	1.403.5
	Connect Mobile App	V2.1.0 (35)

*See additional information below

John Deere Planters

The SeedStar™ 2 configuration above is available only on factory-installed Model Year 2011 and newer planters, and may be field-installed on MY2009-10 planters. **Green** PM/PA controllers (factory-installed on MY2009-10 planters) are not supported with a Gen 4 CommandCenter.

John Deere Dealers: Service ADVISOR™ is needed to update SeedStar™ 2, XP, and 3HP software.

John Deere Air Seeders –

The C850 Air Cart requires a 4600 CommandCenter™. GreenStar™ 3 2630 monitors are not supported.

StarFire™ Receivers –

With SU2017-1, StarFire™ Receivers can be updated via USB port on the Gen 4 CommandCenter™. StarFire™ Receivers can also still be updated through Remote Software Updates application (in ISOBUS VT app), a GreenStar™ Display, or Service ADVISOR™ (John Deere Dealers only). StarFire™ 6000 Receivers can also be updated through the USB port on the receiver; navigate to the receiver pages on the display to complete the update.

Additionally, StarFire™ iTC Receivers will no longer be supported starting with SU2017-1.

JDLink™ –

To use Remote Display Access (RDA) on a Gen 4 CommandCenter™ with GreenStar™ 3 2630 Display connected in the same machine, GS3 2630 software version 3.22.1095 (SU2014-1) or higher is required.

An active JDLink™ Ultimate + WDT + RDA or JDLink™ Connect subscription, and a CommandCenter™ Premium activation are required to wirelessly transfer files. [4600 CommandCenter™ only]

GreenStar™ Rate Controller and GreenStar™ Rate Controller Dry –

The 4600 CommandCenter™ now supports documentation and section control of up to 5 GreenStar™ Rate Controllers for use in liquid application.

To update the GreenStar™ Rate Controller, utilize 4600 CommandCenter™ USB port or use a GreenStar™ 2 or 3 display. John Deere dealers can also utilize Service ADVISOR™.

GreenStar™ Rate Controller Dry is NOT supported with the 4600 CommandCenter™ at this time, and may cause performance issues.

John Deere Rate Controller 2000 –

The 4600 CommandCenter™ supports documentation of up to 4 operations from John Deere Rate Controller 2000. It is important to note that John Deere Rate Controller 2000 can control up to 5 operations and may be used for liquid or dry application.

John Deere Rate Controller 2000 needs to be the only ISO controller present when used with the 4600 CommandCenter. Implements equipped with controllers such as SeedStar™ on John Deere planters or TruSet™ on tillage equipment are not compatible to be used in conjunction with the JDRC2000.

For more information on Gen 4 CommandCenter™ and John Deere Rate Controller 2000 compatibility, please visit the [John Deere Ag Sales Manual](#).

iGrade™ –

iGrade™ compatibility with Gen 4 CommandCenter™ has not been tested with third party control software.

Wireless Data Server Apps –

When updating the SeedStar™ Mobile App with the latest software, a new name for the app, Connect Mobile will appear in addition to any improvements to the app.

ISOBUS Implements –

A software update performed by an authorized ISOBUS implement dealer may be required to obtain compatible software. ISOBUS Implements must be certified through the AEF Organization to be recognized by the Gen 4 CommandCenter™. Visit www.aef-online.org for more information; visit www.aef-isobus-database.org for an active list of compatible implements.

New Features and Improvements



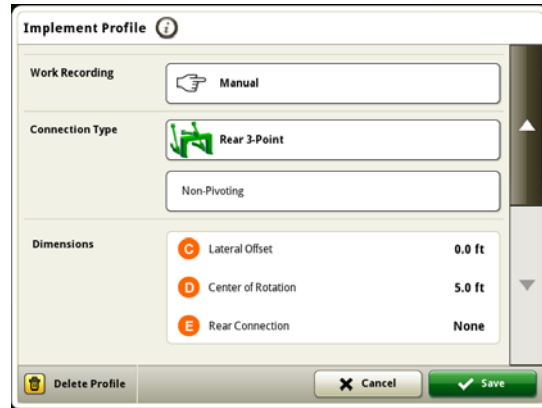
Section Control – In SU2017-1, intentional overlap can be adjusted by 0.1 ft increments and mechanical delay on/off times can be adjusted in increments of 0.01 seconds. Section Control supports up to 5 operations with 16 sections each and up to 96 sections on AEF TC-SC certified ISOBUS implements. Section Control also supports multiple implements and work points or section offsets (Third-party ISOBUS implements). [4600 CommandCenter™ only]



Section Control Auto Off Status – This is a new section status, introduced in SU2016-2, can be triggered by one of the following instances: Section is over previous coverage, the section is outside of an exterior boundary, the section is inside of an interior boundary, or the machine speed is too slow for section control to be commanded on.



Implement Profiles – In SU2017-1, Gen 4 CommandCenter™ has the ability to document implements without controllers. Basic documentation such as area totals and as applied totals is available for these implements for planting, seeding, product application and tillage. Implements without controllers will have a different Implement Profile Setup Page. [4600 CommandCenter™ only]



Also in SU2017-1, when a different implement is detected the display will notify the operator to update track spacing in the AutoTrac Guidance app.



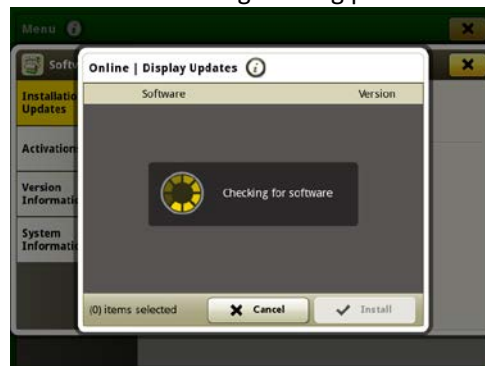
Tank Mixes – Product application tank mixes can now be setup in the Gen 4 CommandCenter™ for more complete documentation of product mixes. Tank mix name and ingredients can setup on the display. They can be edited for easier reuse. Tank mixes can be documented and viewed in Operations Center. Tank mix setup files cannot be exported to Operations Center. [4600 CommandCenter™ only]



Wireless Settings App – With SU2017-1, the Gen 4 CommandCenter™ can be used for online software updates. This app utilizes the MTG 4G LTE for network connectivity. Please note that the Wireless Settings App will only appear if the machine is capable of utilizing the app. Additionally, the wireless network must have a security type of Open or Secure (WPA2-PSK) in order to successfully connect your machine to the network. Network security type can be viewed in the wireless setting app.



Online Display Software Updates – After updating to SU2017-1, the Gen 4 CommandCenter™ will be capable of updating Gen 4 OS Software online through use of a cellular network (MTG 3G) or wireless connection (MTG 4G LTE). Please note, SU2017-1 will still need to be installed using existing processes.



Precision Ag Controller Updates – Precision Ag Controller can now be updated through the Gen 4 CommandCenter™ USB port with SU2017-1. The Apps that are specifically capable of doing this are: GreenStar™ Rate Controller, StarFire™ 3000, StarFire™ 6000, iGrade™ and Active Implement Guidance.

Controller software can still be loaded to USB using the same steps as done when updating controllers through the GS3 2630 Display.



Maps – New for SU2017-1, a field view option has been added as well as the ability to zoom out to 2 square miles. If a field is larger than 2 square miles, the view will show 2-square miles around the location of the machine.



Active Implement Guidance – Gen 4 CommandCenter™ can now utilize a shared signal between the machine receiver and implement receiver.

An implement guidance lightbar demonstration harness is now available. Once installed, it will allow a new module to be added to the run page that shows implement drift. Demonstration harness does not automate implement guidance functionality.



Layout Manager Page Modules – The new run page modules in SU2017-1 are a larger Client, Farm, and Field module, full page field totals and small field totals modules, and an Implement Guidance Lightbar Module. [4600 CommandCenter™ only]



ISOBUS Tasks – With SU17-1, the Gen 4 CommandCenter™ is able to read and handle Tasks imported from Farm Management Information Systems (FMIS) in ISO.XML format and export the finished Task back to the FMIS in ISO.XML file. Gen4 CommandCenter™ is compatible with AEF certified TC-Bas Implements to handle ISO.XML tasks. Totals in task will be handled by the implement.

Gen 4 Extended Monitor – An extended display is now available in 2017. This can be used to view multiple run pages at one time. Please note the extended display does not have its own processor. It instead uses the existing Gen 4 Display's processor to display information. Extended Monitor is not a configurable option in Dual Display Settings. Remote Display Access session does not view extended monitor.

If using a Gen 4 Extended Monitor, Gen 4 OS software and Tractor Applications will need to be updated by a John Deere Dealer during installation.



Display Configuration (Dual Display Settings) – The chart below lists various features within the Gen 4 CommandCenter™ and whether or not they will appear or function in the Gen 4 CommandCenter™ based on a specific display configuration.

Applications Tab	Gen 4 CommandCenter™ Display Configurations*			
	Single Display	Implement Viewer Mode	Precision Ag Applications	Machine Only
Automation Status	✓	✓	✓	✓
AutoTrac™ Guidance	✓	✗	✓	✗
Calculator	✓	✓	✓	✓
Equipment Manager	✓	✗	✓	✗
Fields & Boundaries	✓	✗	✓	✗
Help	✓	✓	✓	✓
ISOBUS VT	✓	✓	Visible, Not Functional**	Visible, Not Functional**
Layout Manager	✓	✓	✓	✓
Machine Monitor	✓	✓	✓	✓

Mapping	✓	✗	✓	✗
Remote Access	✓	✓	✓	✓
Section Control	✓	✗	✓	✗
Settings Manager	✓	✓	✓	✓
StarFire™	✓	✓	✓	✓
Video	✓	✓	✓	✓
Work Monitor	✓	✗	✓	✗
Work Setup	✓	✗	✓	✗
Work Totals	✓	✗	✓	✗

* If utilizing extended monitor with a Gen 4 CommandCenter™, the extended monitor will show apps that the Gen 4 CommandCenter™ is configured to show.

**Visible, Not Functional: ISOBUS VT App will appear, but when selected will show the message, “No ISOBUS implements are currently connected.”



Data Management

Selecting Import Data, Export Data, or the File Manager app may result in a 5-15 second delay to load the File Manager app.

Importing

- Gen 4 CommandCenter™ does not import machine or implement profiles.
- To import prescriptions, shapefiles must be located in “Rx” folder at root of USB drive.
- When importing field boundaries, a field must include an Exterior boundary, in order to import Interior boundary(s).
- USB files including pre-assigned Apex™ Tasks and iTEC™ Pro sequences will not import into the CommandCenter™.

Exporting

- When exporting work data, use a separate USB drive for each Gen 4 CommandCenter™. Exported Gen 4 work data cannot be placed in individual profile folders. Exported “Setup” data is placed in the “JD4600” folder. Exported “Work” Data is placed in the “JD-Data” folder.
- When exporting data, Gen 4 CommandCenter™ may pause for ~15-20 seconds before progressing with export functions. Do not remove power or USB drive during this time.
- An operator cannot export a field boundary to a USB drive which already contains that boundary, even if it’s within a different profile.

Exporting for use with a GreenStar™ 3 2630 Display

- Gen 4 CommandCenter™ setup profiles do not include Machine/Implement Profiles, which are needed by a GS3 2630 Display. Before exporting Gen 4 CommandCenter™ profiles for use in a GS3 2630:
 1. Export data from the GS3 2630 Display with the profile name “JD4600”.
 2. Using the same USB, export Setup Data from the Gen 4 CommandCenter™. All data will be merged into the JD4600 profile folder.

3. Import “JD4600” profile into the GS3 2630 Display.

Within John Deere Operations Center

- Implements without controllers, only tillage, product application and planting/seeding show up
- If planning to manage data in John Deere Operations Center, properly document Client, Farm, and Field information when performing work.
- Gen 4 CommandCenter™ Work data such as seeding, application, harvest and boundary information, can be directly imported into John Deere Operations Center.
 - “Automatically Sync Work Data” is enabled on Gen 4 CommandCenter™ through Data Sync. It sends Work Data files to “Field Analyzer” in Operations Center.
 - “Manually export to Operations Center” is enabled on the Gen 4 CommandCenter™ through Wireless Data Transfer. It sends Work Data to “Files” in Operations Center.

Compatibility with Farm Management Information Software

- Gen 4 CommandCenter™ Work Data is not compatible with, and cannot be viewed in Apex™.
- Prescriptions created in Apex™ must be exported in the shapefile format.
- If sharing files for use in other third party FMIS solutions, export data from John Deere Operations Center as point-based shapefiles. Most third-party FMIS solutions support point-based shapefiles.



General Information

- Software activations are non-transferrable, in the event of lost, stolen, or destroyed equipment. It is recommended to insure machines with a Generation 4 CommandCenter™ at full value, including software activations.

Software Updates

- Before updating software, it is recommended to export all existing data to USB drive. When updating Gen 4 CommandCenter™ software from SU2015-2 (8.12.2500-17) and prior, all existing map coverage on CommandCenter™ will be erased. Work Monitor values will not be reset.
- If updating from Generation 4 OS version SU2014-2 (8.11.2456-13) or prior, Machine and Work Monitor page modules may appear blank. To restore values, access Layout Manager App, edit the run page, delete the Machine and Work Monitor modules, and re-add the desired modules. For default run pages, copy the page, and repeat these steps.
- After updating software, Machine Offsets will reset to factory default settings

Variable-Rate Prescriptions

- Variable-rate prescriptions can be assigned to a Field. This will make them appear in the “Current Location” tab when selecting a prescription to use.

AB Curve Radial Shift Functionality

- Center Shift was disabled to ensure consistent placement of the re-generated AB Curves. Use Left/Right Shift Track and track spacing to adjust the location of your track in the field. [4100/4600 CommandCenter™].

ISOBUS

- Creating a run page with a full-size and vertical split screen ISOBUS VT module for the same implement or controller is not recommended. The vertical split screen module may not properly react to user inputs when both are on the same run page.
- Cycle machine key power and allow CommandCenter™ to completely power down when connecting/disconnecting ISOBUS implements.



Training



Onscreen Help - Onscreen help supplements the information found in the Operator's Manual. Press the Information icon at the top of any page to view relevant help information for that page. When viewing help, press the Book icon under Table of Contents to view all other available content related to the given page. Gen 4 CommandCenter™ Onscreen Help is now available on StellarSupport.com in the [Training Page](#).



Training Simulators - To learn more about the Generation 4 CommandCenter™, there are two versions of Training Simulators available for download on the Training Page in www.StellarSupport.com. The online version will have the most current software, while the offline simulator will only be updated to software version 2015-1.

John Deere Global Support Center

Web: www.StellarSupport.com

The Global Support Center supports customers with valid AMS Support Agreements and John Deere Dealers. Information for all supported countries can be found at StellarSupport™ under the "[Contact Us](#)" section.

Release Notice

These are Generation 4 OS and AMS Applications software update release notes for the Generation 4 CommandCenter™. Release notes can be found on www.stellarsupport.com. Note: Your use of the software is governed by the End User License Agreement included with the software.

Copyright © 1996-2017 Deere & Company