

Downloading the Latest Software Enhancements

(Updated February 1, 2005)

Section 1: Downloading Software from the Website to the Computer

Page 2



Section 2: Downloading Software from the Computer to the Card Using GreenStar System Update 1. **(Coming Soon)**

Page 5

Section 3: Downloading Software from the Computer to the Card Using GreenStar System Update 2.

Page 6



KeyCard

Data Card

Section 4: Downloading Software from Card to the Components in the Machine

Page 13



Section 1: Downloading Software from the Website to the Computer

1. Click on the “GreenStar System Update” from www.stellarsupport.com that matches the machine Configuration You will be updating.

GreenStar System Update 1 (Coming Soon)

Important: *Not for use with StarFire iTC.*

Use this download for Data Cards Only. This update is for the following machine configurations:

- Yield Mapping utilizing an original StarFire Receiver (not a StarFire iTC)
- Yield Mapping utilizing a Non-Deere GPS receiver

§ [GreenStar Update 1 \(1 February 2005\)](#)

GreenStar System Update 2

This download can be used on Data Cards or KeyCards. If you own a KeyCard we recommend you use the KeyCard for updating your AMS components. You should only use a Data Card if you are updating a Yield Mapping system utilizing a StarFire iTC and you don't have a KeyCard.


This update is for the following Machine configurations:

- Yield Mapping Utilizing a StarFire iTC
- All KeyCard Applications utilizing a StarFire or StarFire iTC
 - AutoTrac
 - Parallel Tracking
 - Field Doc
 - Harvest Doc
 - Map Based Prescriptions

Note: If you are using a Data Card, we recommend unloading all data in JDOffice to prevent loss of any field data.

Important note for Data Card Users: The Update Process has changed.

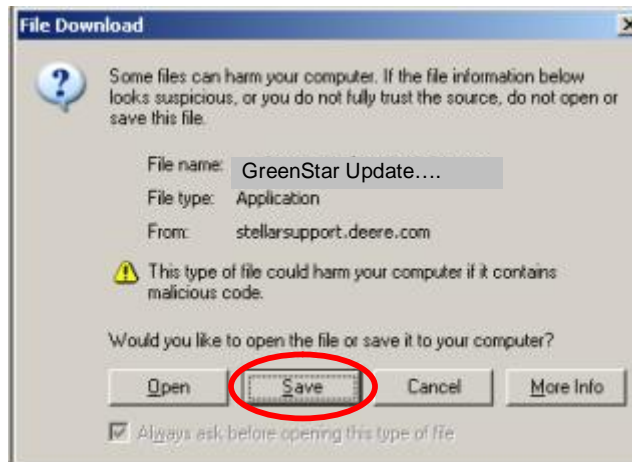
If you are running this update to your data card for Yield Mapping with StarFire iTC, the update will temporarily remove all files from the Data Card and place them on your hard drive. It will then put the appropriate files on your card to update the system. You will need to follow the “Instructions for Updating Software on Components in the Machine” document above because the process has changed. After you update your components, you will need to bring the data card back to the computer originally used

to update the data card and run the  icon. This will restore the original files back to data card. This procedure is required to be able to record data to the data card again.

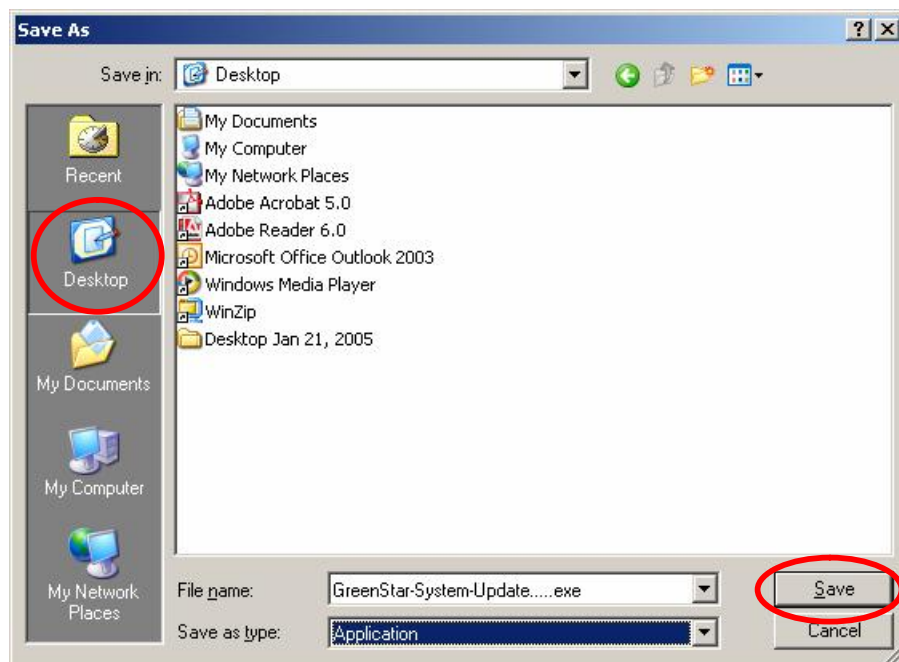
§ [GreenStar Update 2 \(1 February 2005\)](#)

NOTE: The following download windows can be different depending on the operating system on your computer. These windows were generated on a system running Windows XP.

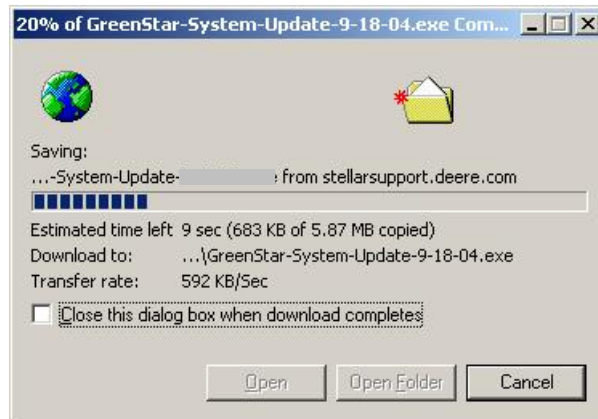
2. You will be prompted to run/open the program or save it. You will want to “Save” the program.



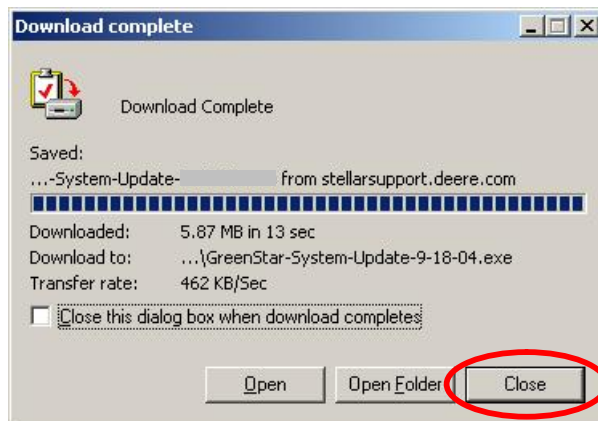
3. When you get the following window, select the Desktop and click save.



- The download will then begin saving to your computer and you will see the following screen or one similar to it.



- When the download is complete you will get the following window. Click "Close."



- Go to your desktop. You should have the following icon on your desktop. If you have the icon you have successfully downloaded the GreenStar Update to your Desktop.



Section 2: Downloading Software from the Computer to the Card Using GreenStar Update 1. (Coming Soon)

Section 3: Downloading Software from the Computer to the Card Using GreenStar Update 2.

1. When you are finished with Section 1, you will have the following icon on your desktop. Double Click the icon.



2. You will get an InstallShield Wizard window. Click "Next."

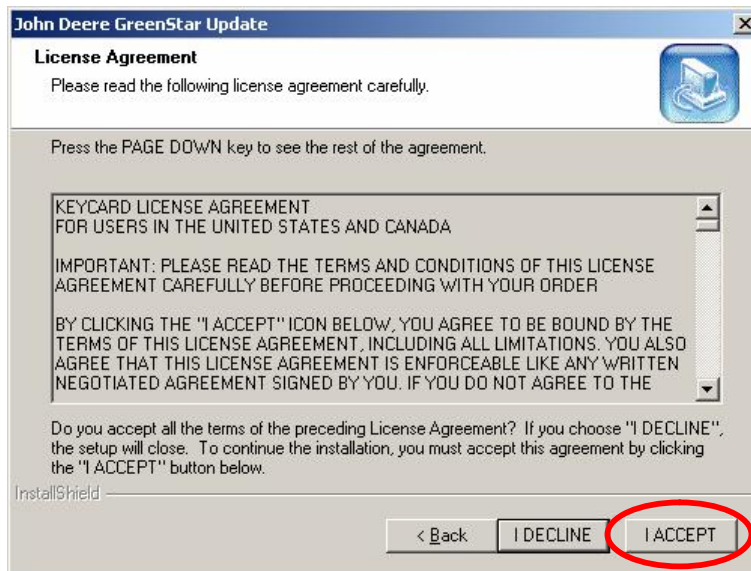


3. You will get a License Agreement Window. Please Read the agreement.

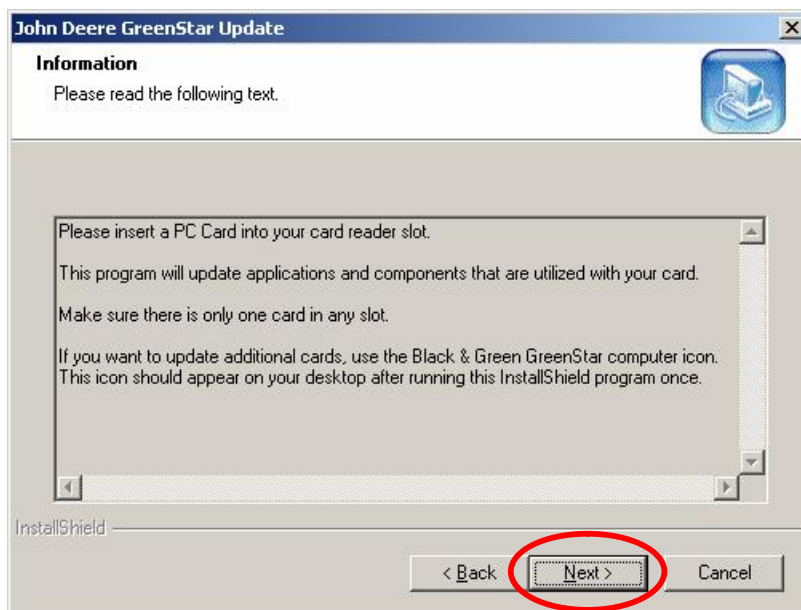
Click "I ACCEPT" if you agree to the terms and conditions of the agreement.

Click "I DECLINE" if you do not agree to the terms and conditions of the agreement.

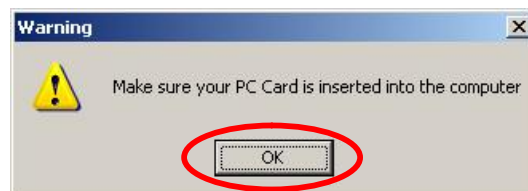
Note: If you select "I DECLINE" the wizard will close and the installation will not complete.



4. Please make sure your PC Card is inserted in the computer. Verify that you only have one card in your card reader. Click "Next" to continue.



5. Click OK.



6. If you are downloading the software to a KeyCard then continue to #7.
If you are downloading the software to a Data Card then continue to #10.

7. You will get the following window if downloading to a KeyCard. Did the download select the drive that contains your KeyCard?

If Yes – Type “Y” and press enter. Go to #9.

If No – Type “N” and press enter. Go to #8.

```

C:\Program Files\JD GreenStar Update\MP_NA_20050121\PCCardUpgrade.exe
Checking drives .....
Removable Disk (E:) appears to be a KeyCard.
Is Removable Disk (E:) the slot where your KeyCard is located (Y/N) ?
  
```

8. If you selected “No” for #7, then you will get the following window. Select the number for the drive that the KeyCard is located. Then press Enter. Continue on to #9.

```


C:\Program Files\JD GreenStar Update\MP_NA_20050121\PCCardUpgrade.exe
Checking drives .....
Removable Disk (E:) appears to be a KeyCard.
Is Removable Disk (E:) the slot where your KeyCard is located (Y/N) ? N
Please select PC card from the following list:
0: No PC card inserted.
1: Removable Disk (A:)
2: Local Disk (C:)
3: CD ROM (D:)
4: Removable Disk (E:)
5: _F90HOM1_U (H:)
6: AMSShare (S:)
Please type selection (0 - 6) and press Enter : _
  
```

9. You will get the following window when the update is finished running to the KeyCard. Press Enter. Go to #14.

```

C:\Program Files\JD GreenStar Update\MP_NA_20050121\PCCardUpgrade.exe
**** Important! Do NOT remove PC card from drive E: ****
Backing up old files to C:\PCCardBackup\January_25_2005\1
.....
Installing new files
.....
Waiting for card drive status
.....
**** You may now stop the PC card in drive E ****
**** Warning! ****
**** Removing the PC card before it is properly
**** stopped can result in loss of data or other
**** damage to the PC card! ****
**** If you are unsure how to stop the card
**** properly, it would be advisable to shut down
**** the computer before removing the PC card! ****
**** Press the ENTER key to close window :
  
```


10. **NOTE:** If you are using a Data Card, we recommend unloading all data in JDOffice to prevent Loss of any field data.

IMPORTANT: If you are running this update to your data card for Yield Mapping with StarFire iTC, the update will temporarily remove all files from the Data Card and place them on your hard drive. It will then put the appropriate files on your card to update the system. You will need to follow the [“Instructions for Updating Software on Components in the Machine”](#) document. After you update your components, you will need to bring the data card back to the computer originally used to update the data card and run the  icon. This will restore the original files back to data card. [This procedure is required to be able to record data to the data card again and is outlined starting at Section 3, number 17.](#)

You will get the following window if downloading to a Data Card. Did the download select the drive that contains your Data Card?

If Yes – Read the Message in the Window Carefully along with the Important message above. Type “Y” and press enter. Go to #12.

If No – Type “N” and press enter. Go to #11.

```

C:\Program Files\JD GreenStar Update\MP_NA_20050121\PCCardUpgrade.exe
Checking drives .....
Removable Disk (E:) appears to be a data card.

Important: This update is going to update your card with the most current
software. You will need to bring the data card back to the computer you are
currently using and run the black GreenStar Update icon prior to recording
data to the card in the combine. Please refer to Instructions "Updating
Software on Components in the Machine" for the proper procedure for updating
software. This procedure has changed from previous updates.

If Removable Disk (E:) is the slot that contains your data card and
you would like to continue with this update, press Y.

If you would like to cancel or (E:) is not the proper
drive letter, press N. (Y/N) ?

```

11. If you selected “No” for #11, then you will get the following window. Select the number for the drive that the data card is located. Then press Enter. Continue on to #12.

```

C:\Program Files\JD GreenStar Update\MP_NA_20050121\PCCardUpgrade.exe
Removable Disk (E:) appears to be a data card.

Important: This update is going to update your card with the most current
software. You will need to bring the data card back to the computer you are
currently using and run the black GreenStar Update icon prior to recording
data to the card in the combine. Please refer to Instructions "Updating
Software on Components in the Machine" for the proper procedure for updating
software. This procedure has changed from previous updates.

If Removable Disk (E:) is the slot that contains your data card and
you would like to continue with this update, press Y.

If you would like to cancel or (E:) is not the proper
drive letter, press N. (Y/N) ? N

Please select PC card from the following list:
0: No PC card inserted.
1: Removable Disk (A:)
2: Local Disk (C:)
3: CD ROM (D:)
4: Removable Disk (E:)
5: _F90HOME1_U (H:)
6: AMSShare (S:)

Please type selection (0 - 6) and press Enter : _

```

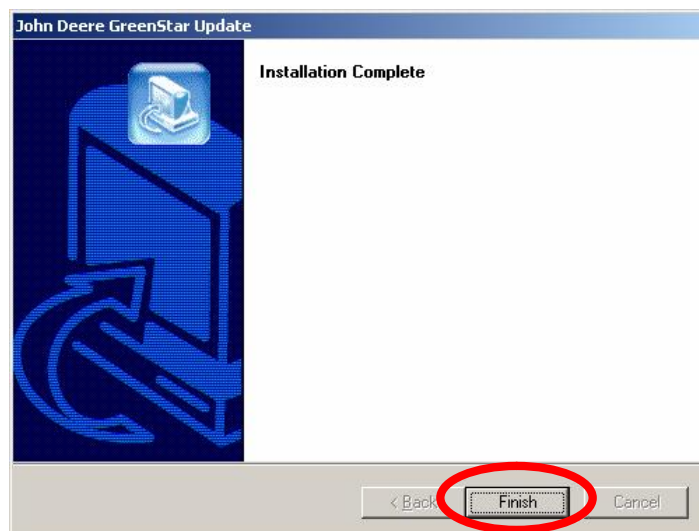
12. You will get the following window when the update is finished running to the Data Card. Press Enter.

```

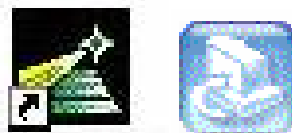
C:\Program Files\JD GreenStar Update\MP_NA_20050121\PCCardUpgrade.exe
**** Important! Do NOT remove PC card from drive E: ****
Backing up old files to C:\PCCardBackup\January_26_2005\1
.....
Installing new files
.....
Waiting for card drive status
.....
*****
**** You may now stop the PC card in drive E
****
**** Warning!
****
**** Removing the PC card before it is properly
**** stopped can result in loss of data or other
**** damage to the PC card!
****
**** If you are unsure how to stop the card
**** properly, it would be advisable to shut down
**** the computer before removing the PC card!
****
Press the ENTER key to close window : _

```

13. You will get the following Window. Click “Finish”.



14. Return to your desktop. You should have the following icons.



15. Right Click on the below icon and delete it from your desktop.



16. Go to the machine and utilize the “Instructions for Updating Software on Components in the machine”. If you are utilizing a Data Card to update the software then please continue onto #17 for direction on Restoring the Data Card after you have updated the software in the machine.

17. Data Card Users, start here after updating the components in the machine.

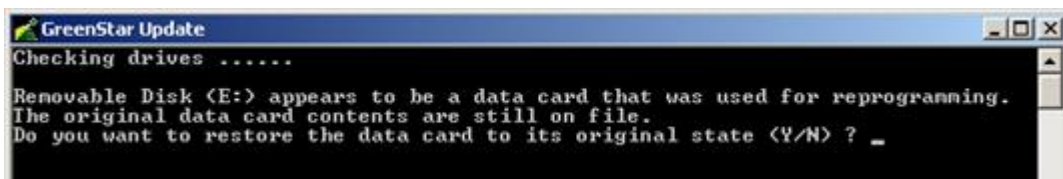
When you finished updating the components in the machine, bring that data card back to the computer that was used in the previous steps. Double click on the following icon on your desktop.



18. Did you get the following window?

If Yes – Type “Y” and press enter. Go to #20.

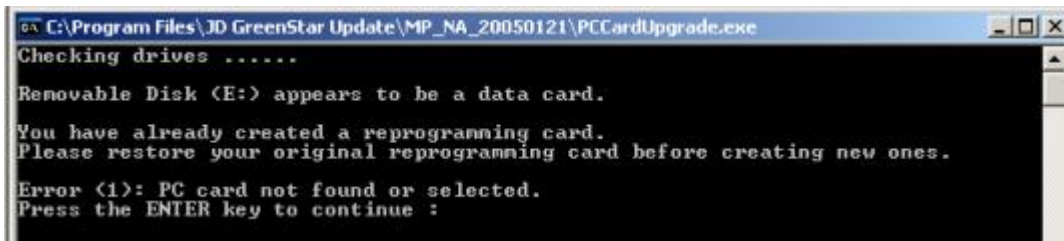
If NO – Go to #19.



19. If you got the following window please check the following:

- Verify you have the data card that you ran the update to previously in Steps 1-13.
- Verify you are using the same computer that was used to run the update to the data card in Steps 1-13.

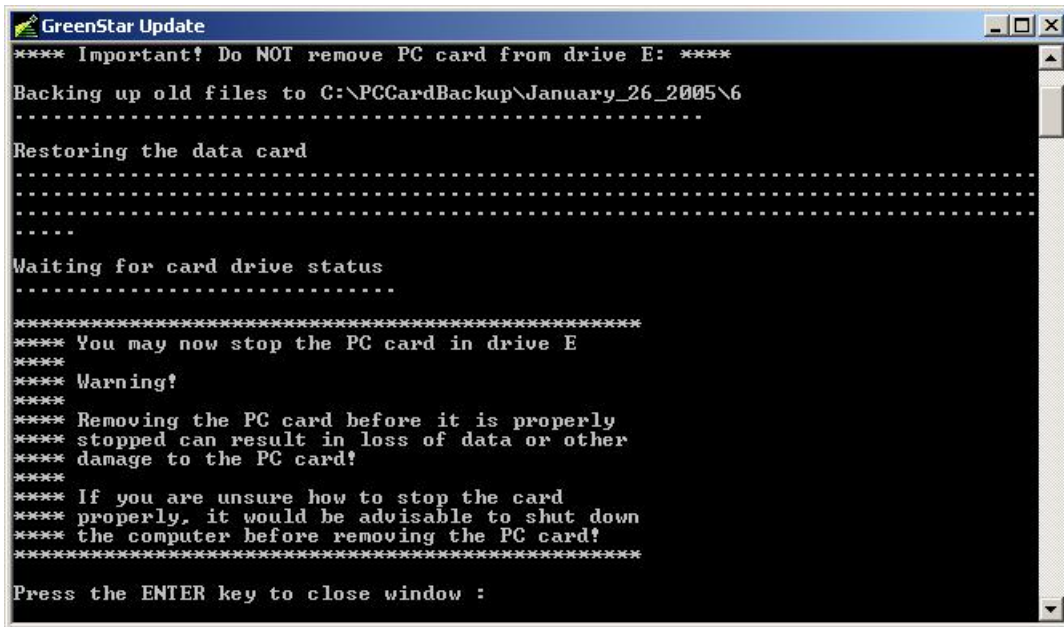
When you correct the above bullets then start at #17 again and restore the data to the data card.



```

C:\Program Files\JD GreenStar Update\MP_NA_20050121\PCCardUpgrade.exe
Checking drives .....
Removable Disk (E:) appears to be a data card.
You have already created a reprogramming card.
Please restore your original reprogramming card before creating new ones.
Error (1): PC card not found or selected.
Press the ENTER key to continue :
  
```

20. You will get the following window when the update is finished restoring data to the Data Card. Press Enter.



```

GreenStar Update
**** Important! Do NOT remove PC card from drive E: ****
Backing up old files to C:\PCCardBackup\January_26_2005\6
.....
Restoring the data card
.....
.....
Waiting for card drive status
.....
*****
**** You may now stop the PC card in drive E
****
**** Warning!
**** Removing the PC card before it is properly
**** stopped can result in loss of data or other
**** damage to the PC card!
****
**** If you are unsure how to stop the card
**** properly, it would be advisable to shut down
**** the computer before removing the PC card!
*****
Press the ENTER key to close window :
  
```

21. The update is now completed.

Section 4: Downloading Software from Card to the Components in the Machine

For this set of instructions go to [*"Instructions for Updating Software on Components in the Machine"*](#) or visit www.StellarSupport.com and click on Support and Training, then GreenStar System Update Instructions, and then Instructions for Updating Software on Components in the Machine.