

Generation 4 Displays

22-1 Software



JOHN DEERE

Software Update

| Package | Version |
|------------------|---------------|
| Generation 4 OS | 10.22.2362-53 |
| AMS Applications | 10.22.2362-53 |

Generation 4 OS installation time: approximately 20 minutes with no existing data. Installation time will vary depending on the amount of existing data and the software version currently on the display. The latest packages for the Generation 4 Displays can be downloaded and installed over-the-air or using a USB drive and John Deere Software Manager. Reference “Software Installation Instructions” in Software Updates section of the StellarSupport™ website for more information.

Over-the-air reprogramming -

https://youtu.be/XSG7O3_9KGI?list=PL1KGsSJ4CWk4fhvFOaBZz261XGwPfXvqk

Machine Application Software Updates

Machine applications are located under Machine Settings in the Generation 4 Display menu. A John Deere dealer will be required to install any required updates to machine application software using Service ADVISOR™.

Other Controller Software Updates

Software for the controllers listed below can be updated using the Generation 4 Display.

| Controller |
|---|
| Application Controller 1100 |
| Application Controller 1100 (S.N. PCXL01C201000-) |
| Application Controller 1120 |
| Application Controller 1120 (S.N. PCXL02C201000-) |
| AutoTrac™ Universal 100 |
| AutoTrac™ Universal 200 |
| AutoTrac™ Universal 300 |
| GreenStar™ Rate Controller Dry |
| GreenStar™ Rate Controller |
| StarFire™ 3000 Receiver |
| StarFire™ 6000 Receiver |
| StarFire™ 7000 Receiver |
| AutoTrac™ Vision Guidance Camera |

New Features and Improvements

AutoTrac™ Tractor Implement Management (TIM)

- Generation 4 4240 and 4640 Universal Displays are now supporting AutoTrac™ TIM feature which allows running John Deere Guidance on 3rd party machines which are AEF certified. A separate TIM application has been introduced to operate this functionality. An AutoTrac™ TIM activated Generation 4 Universal Display and John Deere StarFire™ Receiver are needed to run AutoTrac™ TIM.



AutoTrac TIM

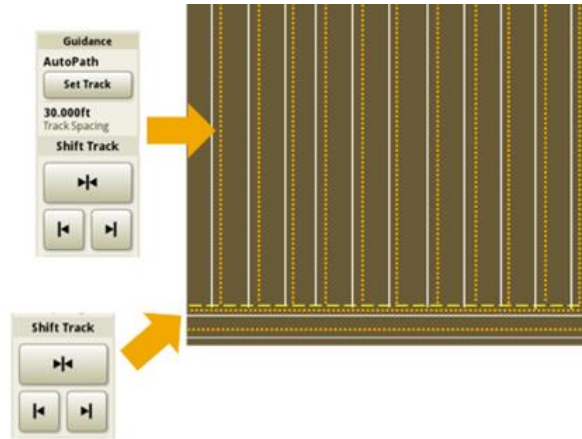
Note: this feature is not available in all countries. Compatible machines must be identified in the AEF Database. The 3rd Party equipment must have a TIM certification including TIM feature called “curvature” certified.

AutoTrac™ TIM requires an AutoTrac™ + AutoTrac™ TIM Activation which needs to be ordered through the pricepage.

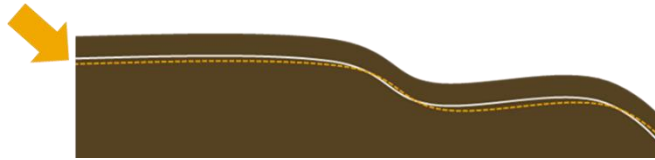
A separate AutoTrac™ TIM harness has been released to fully integrate John Deere Equipment on 3rd party equipment which is orderable through the pricepage as well.

AutoPath™

- AutoPath™ line shifting has increased from six inches of shift track to twelve inches of shift track. Shifts will be relative to the direction of travel.



- This additional shifting will not support use cases such as split row shifting of the guidance plan into the middle of the previous year's rows because shifts will not follow the shape of the curves. Use shift track to compensate for global positioning system (GPS) drift.



Work Planner

- Auto-Import of Planned Work

Generation 4 CommandCenter™ with 22-1 allows users to automatically import a work file created by work planner. As soon as work has been created in work planner and sent to the equipment, the file will be imported in the Generation 4 Display. Automatically imported work can be found in the work list in the work setup app. This feature reduces the operator's steps for setting up their work in the field.

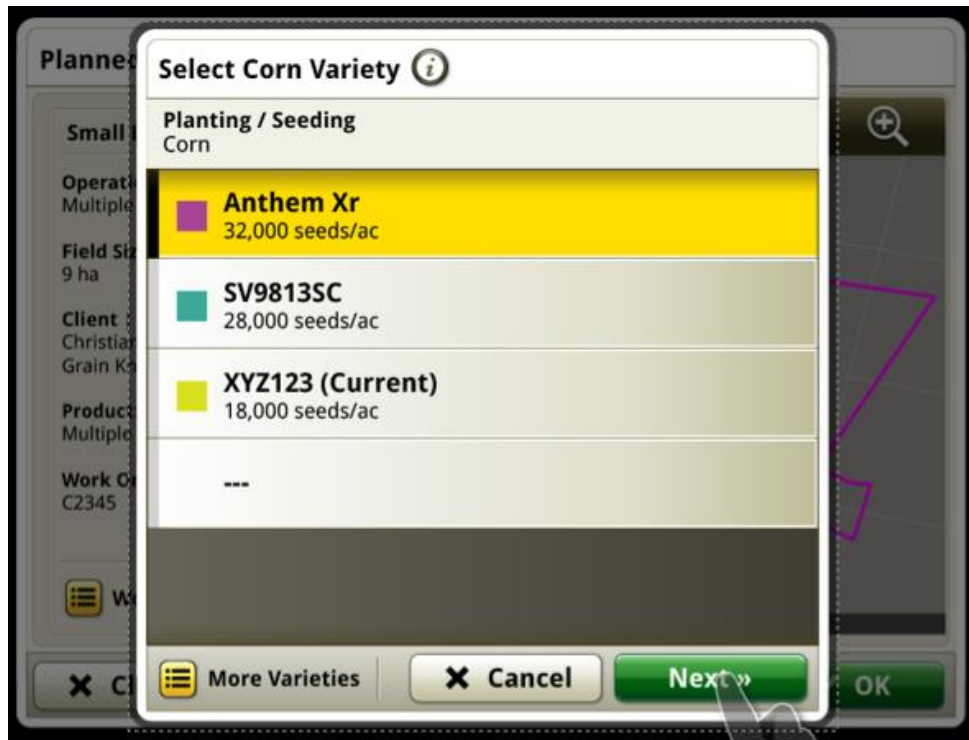
- Support of Machine Profiles without their own operations

Machine Profiles without their own operations are now supported to receive and work with work setup files (Ex. Hagie + GRC). Machines will be able to see the worklist when they have a configured rate controller attached to the machine. This feature allows for these machines to activate their work plans in the absence of their own operations.

Work Planner cont.

- Automatically continue work with current product, variety, or operator

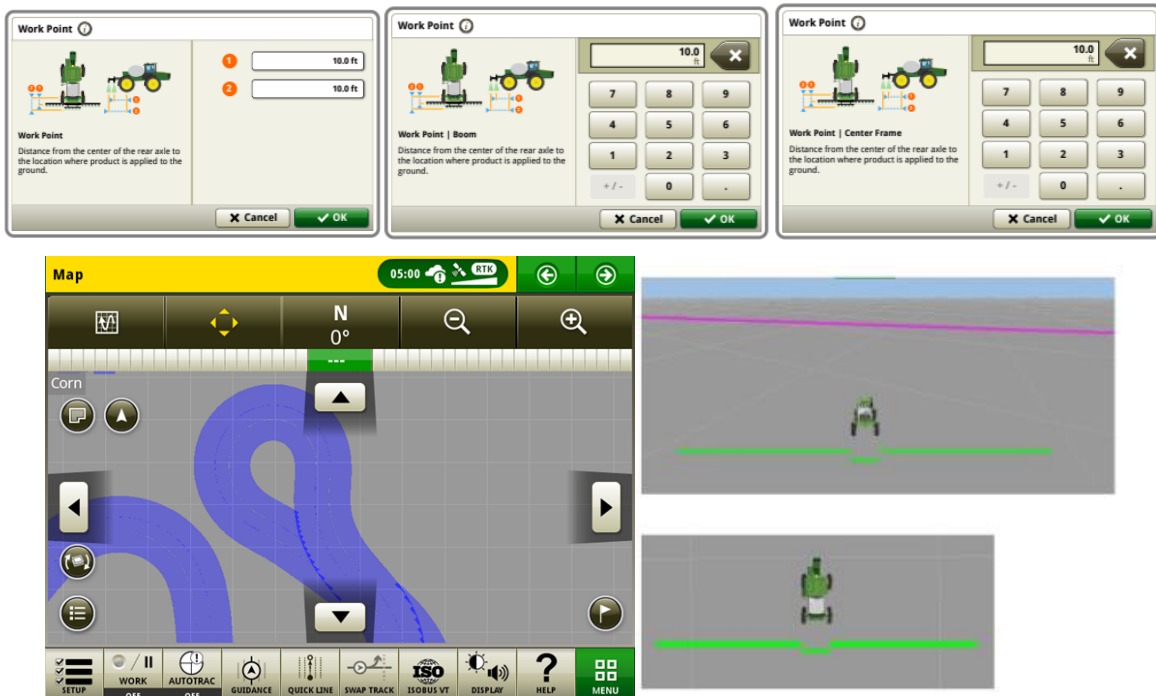
In the product or variety selection overlay, one more entry will appear in addition to planned data.



Sprayers

- New center boom machine measurements

Machine profiles for sprayers has been updated to account for the in-line difference between the center boom and left and right boom wings. Measurements can be taken and inputted into the work point calculations to visualize the spatial difference between the different sections of the boom. When accurate offset measurements are inputted, Section control can more accurately control the nozzle on/off state when crossing boundaries or previous coverage.



Tank Mix

- Up to 20 products in a single Tank Mix

Generation 4 Displays with 22-1 software will be able to support up to 20 products within a tank mix. Currently the maximum number is six products, excluding the carrier.

Resolved Issues

The following issues are fixed in software update 10.22.2362-53:

General (May Apply to Multiple Field Operations)

- Resolved an issue that caused Machine Sync to not connect Leader and Follower.
- Unable to import a Circle Track from Operations Center to the Generation 4 Display.
- Sugarcane Harvesters: Cane Loss and Residue values are being interpreted using the incorrect unit value.
- This release contains important software security fixes.

Additional Information and Training Resources

Operator's Manual

A copy of the Generation 4 Display Operator's Manual is available within the Help Center application on the display with Generation 4 OS software version 10.16.1400-85 and newer. This content is updated with software updates as needed. Always read the latest Operator's Manual prior to operation. To obtain a copy of the Operator's Manual, see your dealer or visit techpubs.deere.com.

Onscreen Help

Onscreen help supplements the information found in the Operator's Manual. The onscreen help can be referenced by opening the Help Center application on the display or by pressing the Information icon at the top of any page to view relevant help information for that page. Generation 4 Display Onscreen Help is also available for reference at displaysimulator.deere.com.

Training Simulators

To learn more about the Generation 4 Displays, there is an online training simulator available at displaysimulator.deere.com

Release Notice

These are Generation 4 OS and AMS Applications software update release notes for the Generation 4 Displays. Release notes can be found on www.stellarsupport.com. Note: Your use of the software is governed by the End User License Agreement included with the software.

Copyright © 1996-2022 Deere & Company