

Generation 4 Displays

21-2 Software



Software Update

Package	Version
Generation 4 OS	10.20.2002-89
Generation 4 OS Help	10.7.110-5
AMS Applications	10.20.2002-89

Generation 4 OS installation time: Approximately 20 minutes, with no existing data. Installation time will vary depending on the amount of existing data and the software version currently on the display. The latest packages for the Generation 4 Displays can be downloaded and installed over-the-air or using a USB drive and John Deere Software Manager. Reference “Software Installation Instructions” in Software Updates section of the Stellar Support website for more information.

Over-the-air reprogramming -

https://youtu.be/XSG7O3_9KGI?list=PL1KGsSJ4CWk4fhvFOaBZz261XGwPfxvqk

Machine Application Software Updates

Machine applications are located under Machine Settings in the Generation 4 Display menu. A John Deere dealer will be required to install any required updates to machine application software using Service ADVISOR™.

Other Controller Software Updates

Software for the controllers listed below can be updated using the Generation 4 display.

Controller
Application Controller 1100
Application Controller 1100 (S.N. PCXL01C201000-)
Application Controller 1120
Application Controller 1120 (S.N. PCXL02C201000-)
AutoTrac™ Universal 100
AutoTrac™ Universal 200
AutoTrac™ Universal 300
GreenStar™ Rate Controller Dry
GreenStar™ Rate Controller
StarFire™ 3000 Receiver
StarFire™ 6000 Receiver
AutoTrac™ Vision Guidance Camera

New Features and Improvements

AutoPath™ –

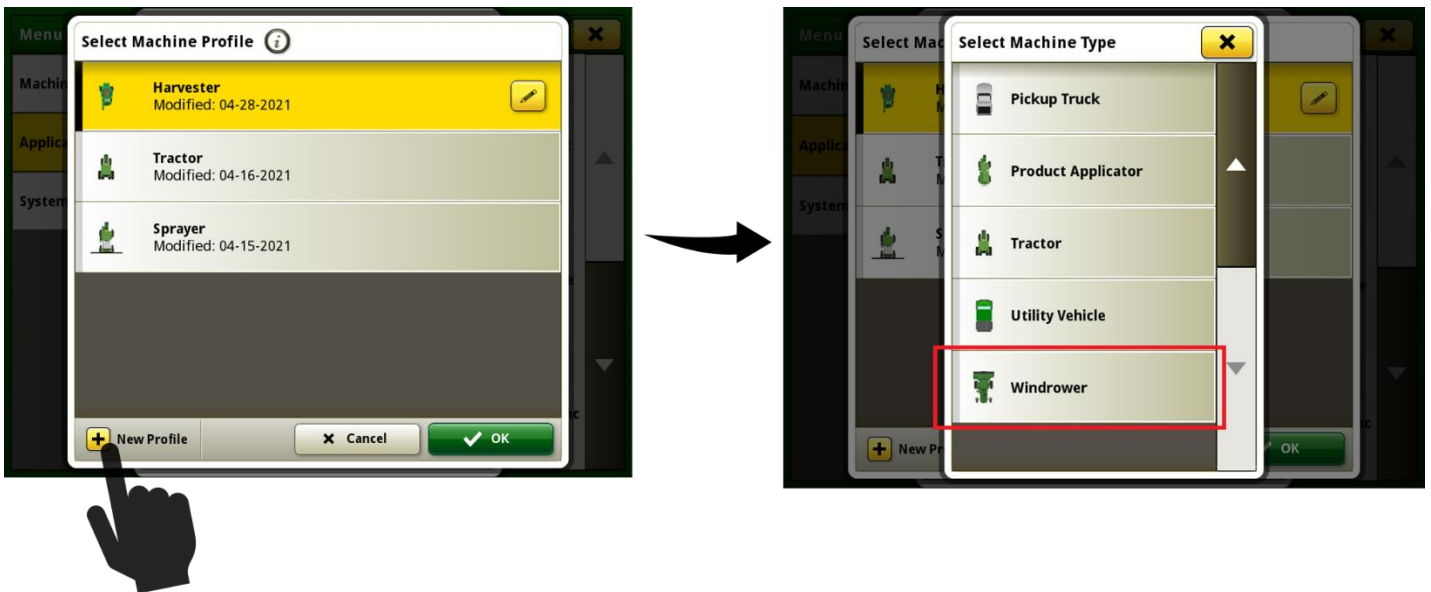
- Tillage AutoPath™ lines will now be generated from the planting source operation. This was not allowed in previous releases.
- AutoPath™ next line selection logic has been changed. The closest and most aligned AutoPath™ Line will be highlighted.

Work Planner -

- GRC and JDRC2000 are now supported and can be added as virtual implements.
- Improved visibility of Work Instructions included in Planned Work when accepting work.
- If variety locator data has been added to the work plan, varieties will be set automatically in Work Planner.

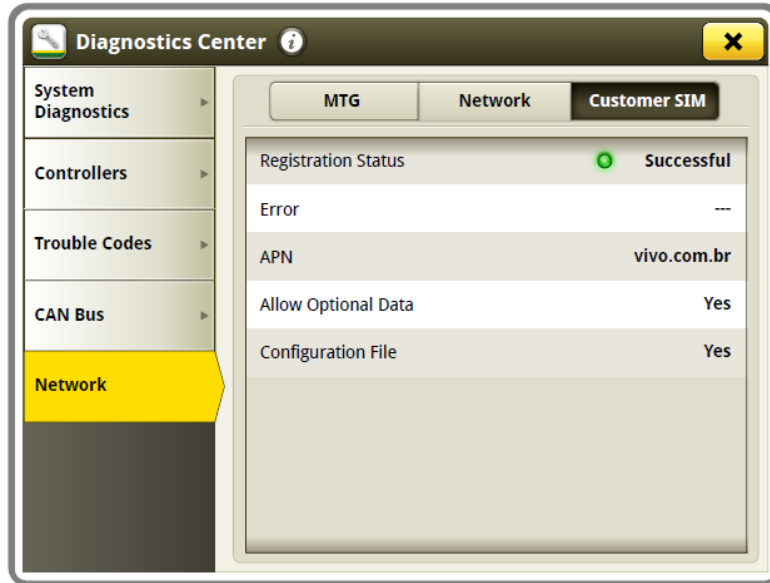
Universal Display Compatibility –

- 4640 and 4240 Universal Displays now support a virtual Windrower machine type in Equipment Manager. This enables AutoTrac™ and documentation for non-VIN detected Windrowers. Default values for GPS offsets and Header dimensions may need to be changed for individual machines. Rotary and Draper headers are available. Supported work recording triggers include Manual, Implement Switch Open, Implement Switch Closed, and AutoTrac™ Engaged.



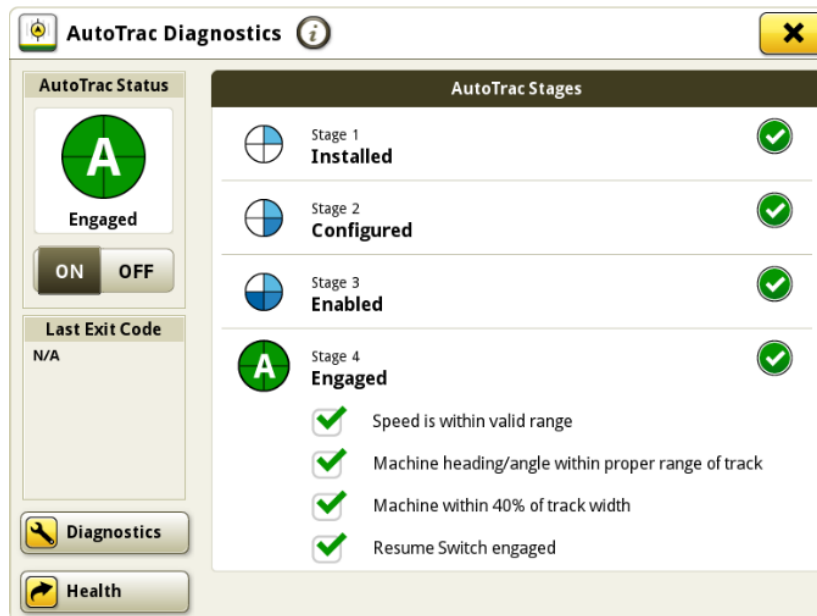
Diagnostics Center –

- Customer SIM pane is available in Diagnostics Center when a Display is connected to a MTG that supports a customer owned SIM card. Customer Owned SIM capable MTGs may not be available in all regions.



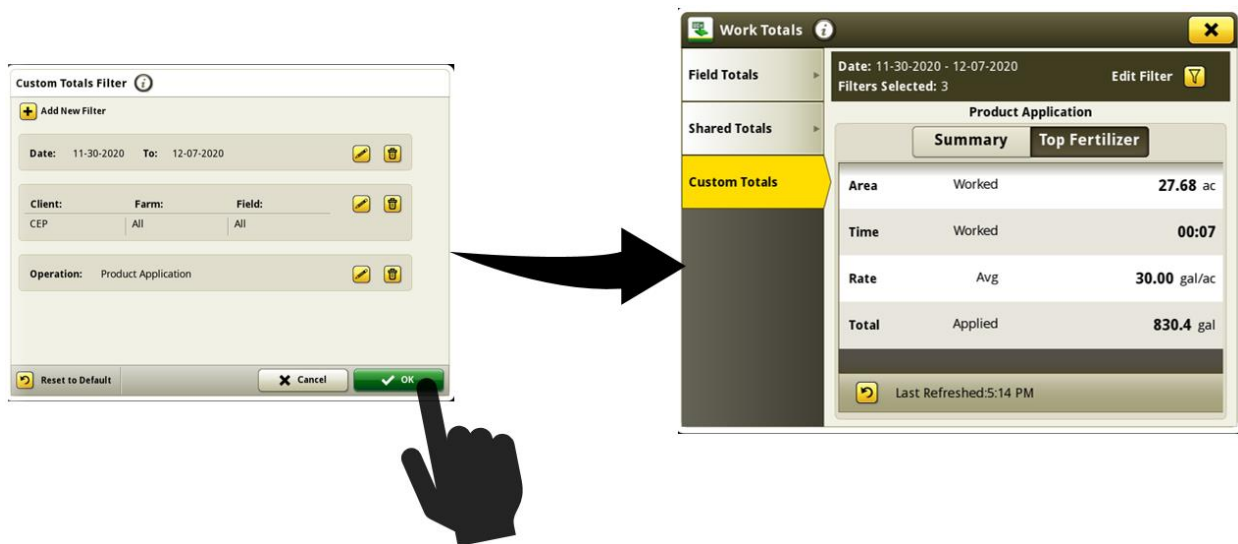
AutoTrac™ Terminology -

- New terminology for AutoTrac™ Status Pie will be used for more consistent use of terms. These terms will apply to both the engaged and disengaged states.



Work Totals –

- A new tab called Custom Totals is now available within the Work Totals application to allow operators to perform custom queries of historical work performed by the display. Operators can define a query with filters for client/farm/field, date range, operation and crop or product. After the desired filters are applied, the display will return any results that meet the defined filter criteria. The data in the custom totals tab does not automatically increment as work is performed. The operator must use the refresh button if they wish to update the data with any applicable new work since the query was last refreshed.
- *Note: Custom Totals can only query data that was generated after the display was programmed to 21-2 software update. Custom Totals cannot query imported data. Custom Totals will not return results for searches that contain items that have been deleted from the display.*



ISOBUS Virtual Terminal -

- Two Virtual Terminals are now supported simultaneously if an extended monitor is connected to a Generation 4 CommandCenter™ or 4640 Universal Display.

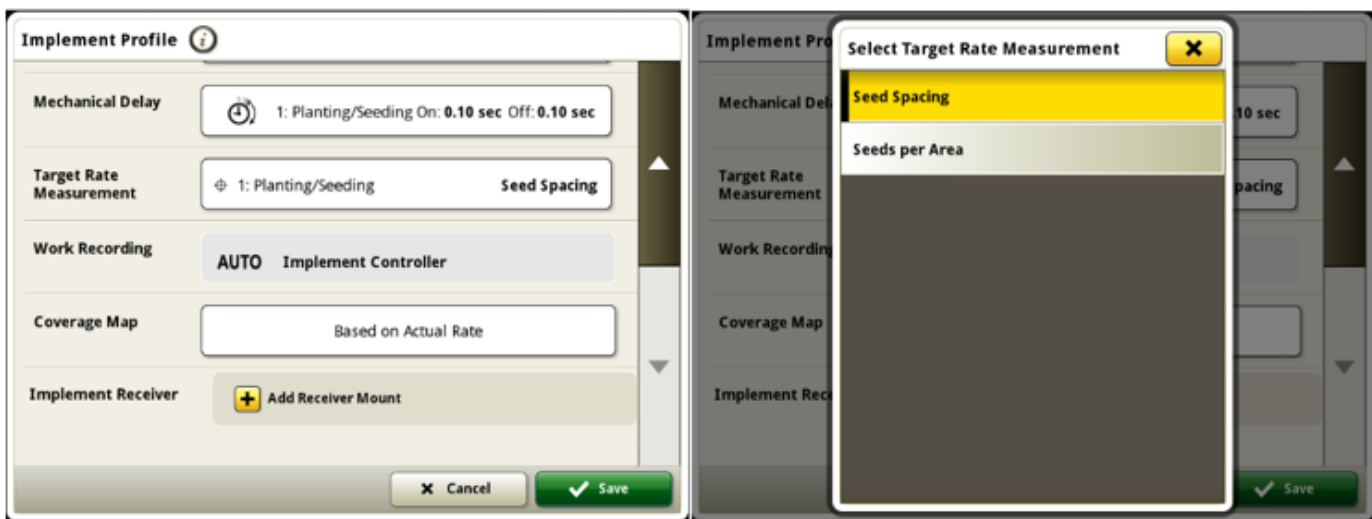
Note: Implement viewer 2 needs to be turned on manually to allow a second Virtual Terminal. The second ISOBUS VT will only be visible via a Run Page module. This Run Page module will need to be added to an active Run Page Set in Layout Manager.



ISOBUS TaskController -

- Seed spacing as a rate type is now supported for ISOBUS AEF certified implements.

Note: If an implement supports seed spacing and mass/area, the correct rate needs to be selected in the Implement Profile.

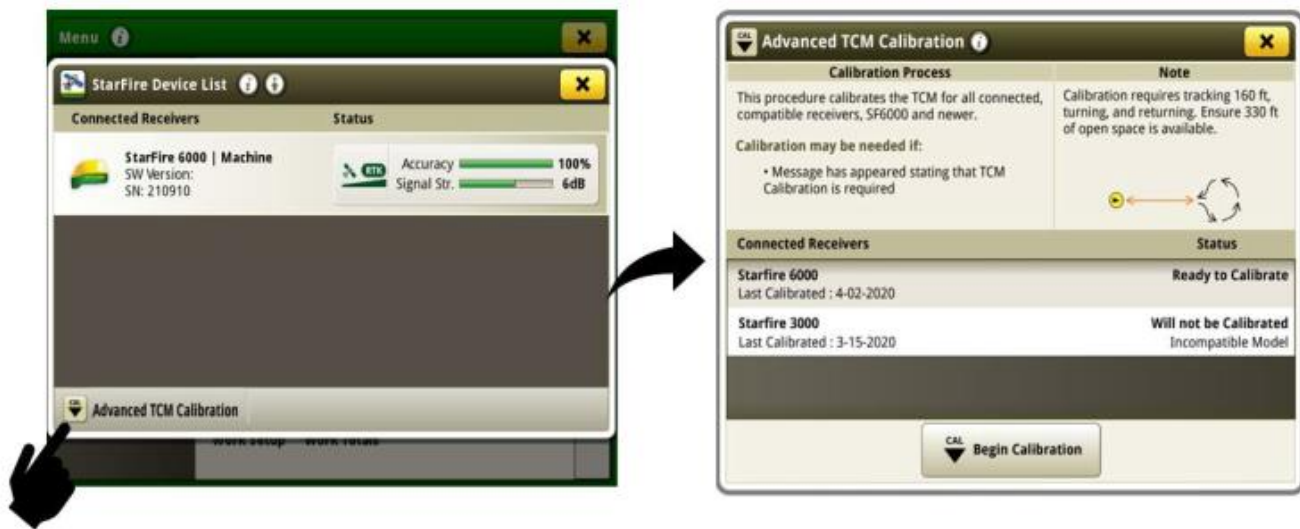


StarFire™-

- Advanced TCM Calibration support has been added to Generation 4 4200 CommandCenter™ and 4240 Universal Display with 21-2 software. Previously, this was only supported on 4600 CommandCenter™ and 4640 Universal Displays.

Requirements:

- StarFire™ 6000 with software version 4.40N (software bundle 20-2) or newer
- Generation 4 4200/4600 CommandCenter™ or 4240/4640 Universal Display with 21-2 software
- Valid AutoTrac™ activation



Reichhart® GREEN FIT -

- Slow speed functionality has been added to allow AutoTrac™ operation at 0.1 km/h.
- Passive implement guidance is now supported.
- Using GREEN FIT on a combine or SPFH supports yield monitoring for harvesting operations.
- Machine or vehicle type can be selected using GREEN FIT such as: Small & Large Row Crop, articulated 4WD, tracked machines, harvesters (Combines + SPFH), and Self-Propelled Sprayers.
- Advanced Diagnostics have been added.

Resolved Issues

The following issues are fixed in software update 10.20.2002-89:

General (May Apply to Multiple Field Operations)

- AutoTrac™ S-ing encountered on Model Year 2020 8R Tractors with an integral planter
- While using MCS an implement receiver cannot be added
- AB curves do not generate or experience a large shift after importing
- Implement position on the display is incorrect after coming to a quick stop
- Section Control status may be erratic, or display performances slows while using a prescription
- Intermittent SSU error 523698.09 appears on 8030 series and model year 2010 – 2012 8R tractors
- Section Control status indicates “Not Ready” when Manure Constituent Sensing is connected

Additional Information and Training Resources

Operators Manual

A copy of the Generation 4 display operators manual is available within the Help Center application on the display with Generation 4 OS software version 10.16.1400-85 and newer. This content is updated with software updates as needed. Always read the latest operators manual prior to operation. To obtain a copy of the operator's manual, see your dealer or visit techpubs.deere.com.

Onscreen Help

Onscreen help supplements the information found in the Operator's Manual. The onscreen help can be referenced by opening the Help Center application on the display or by pressing the Information icon at the top of any page to view relevant help information for that page. Generation 4 Display Onscreen Help is also available for reference at displaysimulator.deere.com.

Training Simulators

To learn more about the Generation 4 Displays, there is an online training simulator available at displaysimulator.deere.com

Release Notice

These are Generation 4 OS and AMS Applications software update release notes for the Generation 4 Displays. Release notes can be found on www.stellarsupport.com. Note: Your use of the software is governed by the End User License Agreement included with the software.

Copyright © 1996-2021 Deere & Company