

# FILTER OVERVIEW WITH SERVICE INTERVAL AND CAPACITIES

X9 Series Combine X9 1000, X9 1100

## ENGINE



**SECONDARY FUEL FILTER**  
[DZ104868](#)

Replace at every 500 hours.



**DIESEL EXHAUST FLUID (DEF)**  
[DZ114640](#)

Replace every 4500 hours or every three years of operation, whichever occurs first.



**FUEL WATER SEPARATOR FILTER**  
[R502778](#)

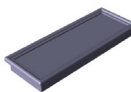
Inspect every 10 hours, inspect every 50 hours and every 400 hours or when Diagnostic Trouble Code (DTC) is generated.

## CAB



**FRESH AIR FILTER**  
[RE284091](#)

Clean or replace every 50 hours and as required.



**FRESH AIR FILTER**  
[AXE70605](#)

Clean or replace every 50 hours and as required.

## ENGINE



**PRIMARY AIR FILTER**  
[HXE11090](#)

**SECONDARY AIR FILTER**  
[HXE11091](#)

Replace at every 400 hours.

## HYDRAULIC FILTER CHARGE AND LUBRICATION



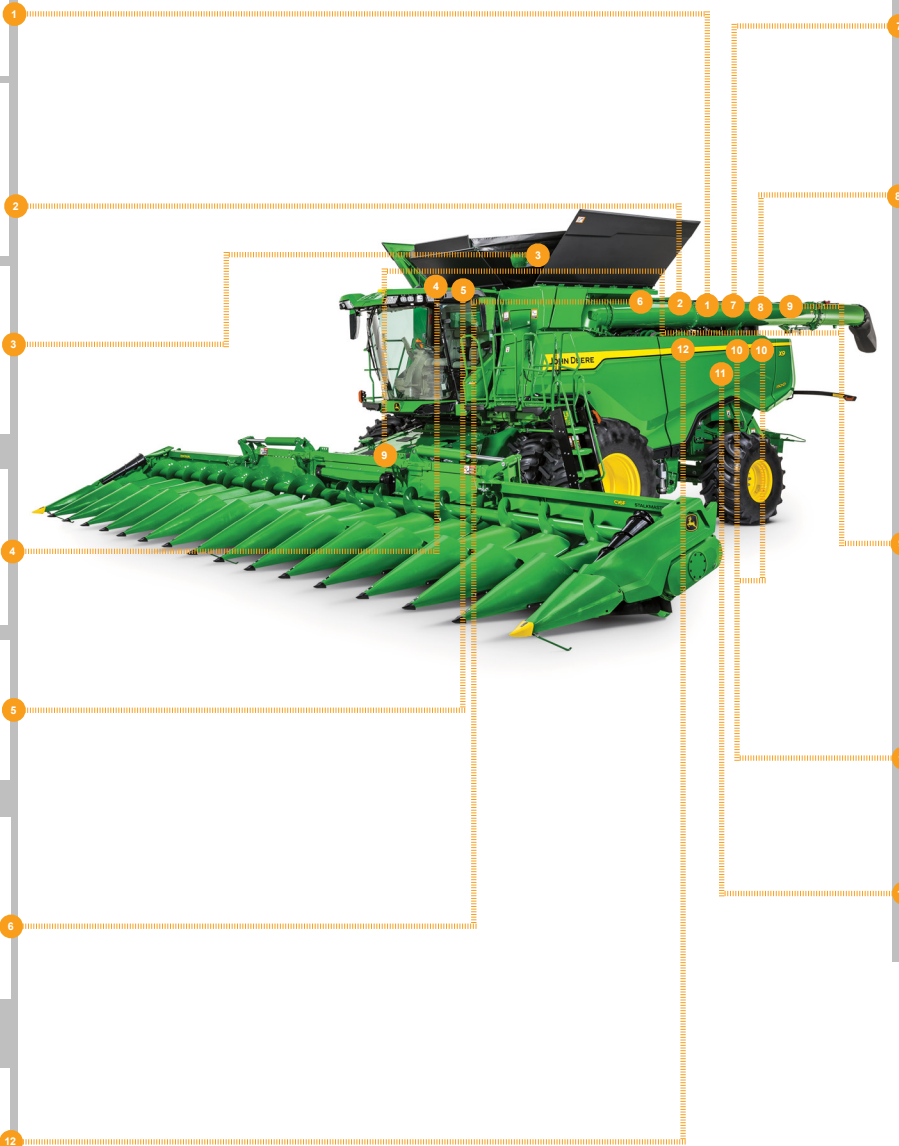
**CHARGE AND LUBE FILTERS**  
[RE577612](#)

Replace at every 1000 hours.



[RE577250](#)

Replace at every 1000 hours.



## ENGINE



**PRIMARY FUEL FILTER**  
[DZ105040](#)

Replace at every 500 hours.



**OIL FILTER**  
[RE572785](#)

Minimum hours before first engine oil change is 100 hours. Extended engine oil change every 500 hours or annually, whichever come first. The extended 500 hour interval is only allowed if using Plus-50™ II oil with a John Deere filter and diesel fuel with sulfur content less than 15mg/kg (15ppm). If all conditions are not met, change oil and filter at 250 hours of operation.

## TRANSMISSION



**RETURN FILTER**  
[AXE82296](#)

Replace at every 1000 hours.



[RE577250](#)

Replace at every 1000 hours.

## MAIN HYDRAULIC RESERVOIR



**HYDRAULIC FILTER**  
[AXE73798](#)

Replace at every 1000 hours.



[AXE73797](#)

Replace at every 1000 hours.



**BREATHER**  
[AXE82230](#)

Replace at every 1000 hours.



**JOHN DEERE**  
Genuine Parts and Service

# CAPACITIES

## X9 Series Combine X9 1000, X9 1100

### CAPACITIES (Approximate):

#### **Fuel Tank:**

X9 1000, X9 1100 ..... 1,250 L (330 gal)

#### **Cooling System with Heater:**

##### **John Deere COOL-GARD™ II / John Deere COOL-GARD II PG**

X9 1000, X9 1100 ( Tier 3/Stage IIIA)..... 76 L (21.2 gal)

X9 1000, X9 1100 ( Final Tier 4 and Stage V)84 L (23.5 gal)

#### **Engine Crankcase with Filter:**

##### **Plus-50™ II**

X9 1000, X9 1100 ..... 57 L (15.9 gal)

#### **Feed Accelerator Gear Case:**

##### **GL-5/ EXTREME-GARD™**

X9 1000, X9 1100 ..... 2 L (0.5 gal)

#### **Main Engine Gear Case:**

##### **Hy-Gard™**

X9 1000, X9 1100 ..... 53 L (14.8 gal)

#### **Cleaning Fan Variable Speed Driven Bearing Cavity:**

##### **GL-5/ EXTREME-GARD™**

X9 1000, X9 1100 ..... 0.1 L (0.03 gal)

#### **Spreader Gear Case:**

##### **GL-5/ EXTREME-GARD™**

X9 1000, X9 1100 ..... 1.2 L (0.33 gal)

#### **Final Drives:**

##### **GL-5/ EXTREME-GARD™**

X9 1000, X9 1100 (Wheel Machines) ..... 8 L (2.23 gal)

X9 1000, X9 1100 (Track Machines) ..... 13.5 L (3.76 gal)

#### **Chopper Gear Case (Two-Speed):**

##### **Hy-Gard™**

X9 1000, X9 1100 ..... 1.9 L (0.53 gal)

#### **Loading Auger Gearcase:**

##### **GL-5/ EXTREME-GARD™**

X9 1000, X9 1100 (Fixed)..... 0.9 L (0.23 gal)

X9 1000, X9 1100 (Pivoting)..... 0.9 L (0.23 gal)

#### **Diesel Exhaust Fluid (DEF) Tank (Final Tier 4/Stage V):**

##### **John Deere™ Diesel Exhaust Fluid**

X9 1000, X9 1100 ..... 83 L (22 gal)

#### **Hydraulic / Hydrostatic Reservoir:**

##### **Hy-Gard™**

X9 1000, X9 1100 ..... 91 L (25.40 gal)

\*Parts located in front with respect to model image.