

REPLACEMENT PARTS GUIDE

750J-II Crawler Dozer (PIN: 1BZ750JA__D000001—)



CAB FRESH AIR FILTER
[AT191102](#)
Interval (hrs) - 1000.

CAB RECIRCULATING AIR FILTER
[AT315957](#)
Interval (hrs) - 1000.

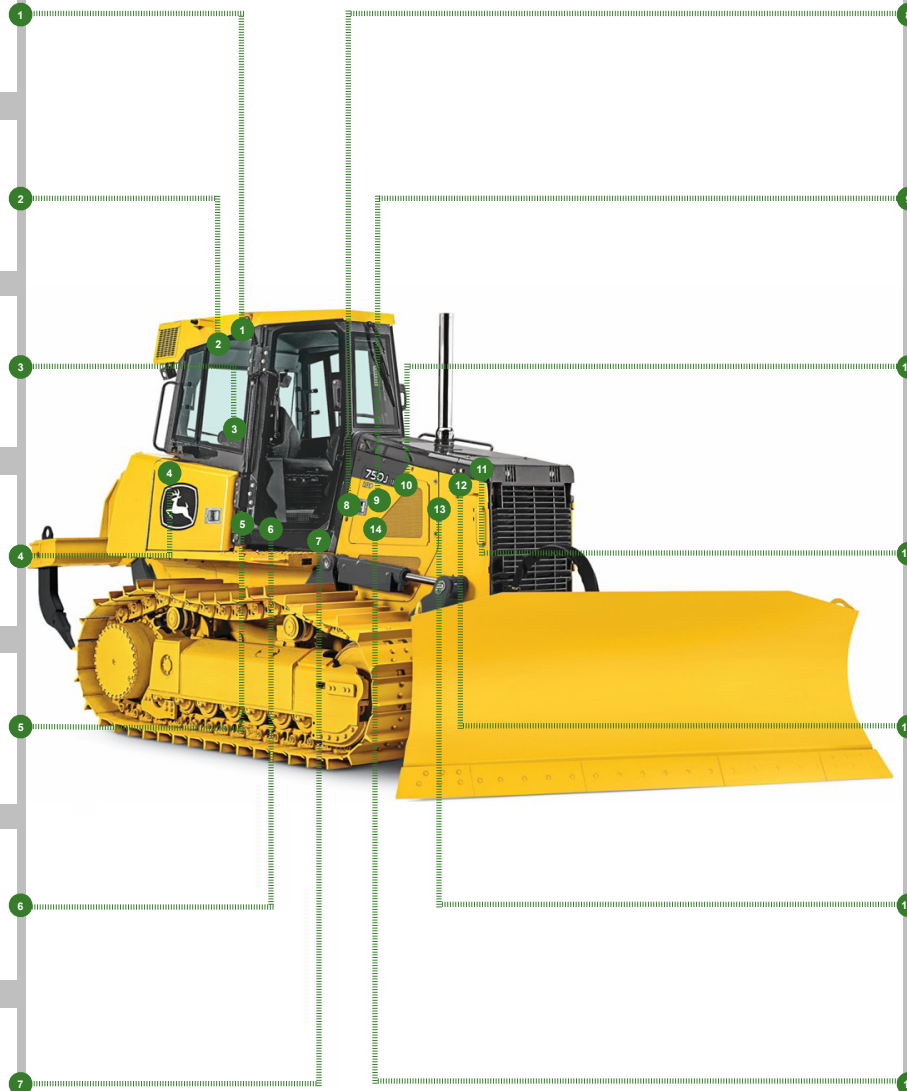
FUEL TANK BREATHER
[AT156445](#)
Interval (hrs) - 2000.

AUXILIARY FUEL FILTER (IF EQUIPPED)
[AT365870](#)
Interval (hrs) - 500.

FAN OIL FILTER ELEMENT
[T175002](#)
Interval (hrs) - 2000.

HYDRAULIC OIL FILTER
[AT318160](#)
Interval (hrs) - 2000.

HYDROSTATIC TRANSMISSION OIL FILTER
[AT318160](#)
Interval (hrs) - 2000.



PRIMARY FUEL FILTER
[RE529643](#)
Interval (hrs) - 500.

ENGINE OIL FILTER
[RE504836](#)
Interval (hrs) - 500.

ENGINE ROCKER ARM COVER GASKET
[R524469](#)
Interval (hrs) - 2000.

ENGINE AIR FILTER ELEMENT—SECONDARY
[AT314583](#)
Interval (hrs) - As Required.









ENGINE AIR FILTER ELEMENT—PRIMARY
[AT300487](#)
Interval (hrs) - As Required.

ENGINE AIR CLEANER DUST UNLOADER VALVE
[M89679](#)
Interval (hrs) - As Required.

FINAL FUEL FILTER
[RE522878](#)
Interval (hrs) - 500.

REPLACEMENT PARTS GUIDE

750J-II Crawler Dozer (PIN: 1BZ750JA__D000001—)

Part Description	Part Number	Qty or capacity	Change Interval In Hours
John Deere Plus-50™ II Engine Oil ¹ 	<u>TY26669</u>	26.0 L (7.0 gal)	500
John Deere Hydrau™ Hydrostatic Transmission Oil ¹ 	<u>TY27367</u>	106.0 L (28.0 gal)	2000
John Deere Hydrau™ Hydraulic System Oil ¹ 	<u>TY27367</u>	106.0 L (28.0 gal)	2000
John Deere Hy-Gard™ Inner Final Drive Oil ¹ (each side) (750J-II LT) 	<u>TY6354</u>	9.5 L (2.5 gal)	1000
John Deere Hy-Gard™ Inner Final Drive Oil ¹ (each side) (750J-II LGP) 	<u>TY6354</u>	15.9 L (4.2 gal)	1000
John Deere Hy-Gard™ Outer Final Drive Oil ¹ (each side) 	<u>TY6354</u>	15.1 L (4.0 gal)	1000
John Deere Hy-Gard™ Track Frame Pivot Shaft Oil ¹ (each side) 	<u>TY6354</u>	1.7 L (1.75 qt)	1000
John Deere Cool-Gard™ II Pre-Mix 	<u>TY26575</u>	21.6 L (5.7 gal)	6000

REPLACEMENT PARTS GUIDE

750J-II Crawler Dozer (PIN: 1BZ750JA__D000001—)

Fluid Analysis Kits ²			
Engine Oil	AT346594	1	500
Hydrostatic Transmission Oil	AT346594	1	500
Final Drive Oil	AT346594	4	500
Hydraulic Oil	AT346594	1	500
Diesel Fuel	AT180344	1	500
Engine Coolant	TY26873	1	500
<p>¹See operator's manual for recommended oil type and oil viscosities based on operating temperatures.</p> <p>²Based on fluid analysis results, intervals may need to be adjusted for operating conditions. Consult an authorized John Deere dealer.</p>			

Plus-50 is a trademark of Deere & Company

Hy-Gard is a trademark of Deere & Company

Hydrau is a trademark of Deere & Company

COOL-GARD is a trademark of Deere & Company

Service Intervals

750J-II Crawler Dozer (PIN: 1BZ750JA_ _D000001—)	
As Required	
<input type="checkbox"/> Inspect or replace belt and check belt tensioner	<input type="checkbox"/> Check and adjust track sag
<input type="checkbox"/> Inspect and clean cooling package	<input type="checkbox"/> Check and drain primary fuel filter and water separator
<input type="checkbox"/> Replace engine air cleaner elements	<input type="checkbox"/> Check and drain auxiliary fuel filter and water separator (if equipped)
<input type="checkbox"/> Check and fill windshield washer fluid	<input type="checkbox"/> Inspect or replace cab fresh air and recirculation air filters
<input type="checkbox"/> Check dust unloader valve	<input type="checkbox"/> Check and clean engine air filter precleaner
Every 10 Hours or Daily	
<input type="checkbox"/> Check engine oil level	<input type="checkbox"/> Lubricate C-frame dozer linkage and blade socket
<input type="checkbox"/> Check engine coolant level	<input type="checkbox"/> Check hydraulic oil level
<input type="checkbox"/> Check hydrostatic transmission oil level	
Every 50 Hours	
<input type="checkbox"/> Lubricate right and left end crossbar pivots	<input type="checkbox"/> Lubricate ripper (if equipped)
Every 250 Hours	
<input type="checkbox"/> Take engine oil sample	<input type="checkbox"/> Check final drive oil level
Every 500 Hours	
<input type="checkbox"/> Replace auxiliary fuel filter and water separator (if equipped)	<input type="checkbox"/> Take hydraulic oil sample
<input type="checkbox"/> Replace primary fuel filter and water separator	<input type="checkbox"/> Take engine coolant sample
<input type="checkbox"/> Drain and refill engine oil and replace filter	<input type="checkbox"/> Take hydrostatic transmission oil sample
<input type="checkbox"/> Drain water and sediment from fuel tank	<input type="checkbox"/> Take inner and outer final drive oil sample
<input type="checkbox"/> Check battery electrolyte level and terminals	<input type="checkbox"/> Take diesel fuel sample
<input type="checkbox"/> Replace final fuel filter	
Every 1000 Hours	
<input type="checkbox"/> Check coolant condition	<input type="checkbox"/> Replace cab fresh air and recirculation air filters
<input type="checkbox"/> Drain and refill final drive oil	<input type="checkbox"/> Check track frame pivot shaft bushing oil level
<input type="checkbox"/> Check air intake hose	
Every 2000 Hours	
<input type="checkbox"/> Check and adjust engine valve lash	<input type="checkbox"/> Replace fuel tank breather
<input type="checkbox"/> Clean engine crankcase ventilation tube	<input type="checkbox"/> Drain and refill hydrostatic transmission oil and replace filter
<input type="checkbox"/> Drain and refill hydraulic system oil and replace filter	<input type="checkbox"/> Replace fan oil filter
Every 6000 Hours	
<input type="checkbox"/> Drain and refill engine cooling system	