

REPLACEMENT PARTS GUIDE

750K (PIN: 1T0750KX__E216966—270478)
850K (PIN: 1T0850KX__E178122—271265)



ENGINE AIR FILTER ELEMENT—SECONDARY

[F071151](#)

Interval (hrs) - As Required.

ENGINE AIR FILTER ELEMENT—PRIMARY

[AT370279](#)

Interval (hrs) - As Required.

ENGINE OIL FILTER

[RE539279](#)

Interval (hrs) - 500.

DIESEL PARTICULATE FILTER (COMPONENT OF EXHAUST FILTER)

[RE555087](#)

Interval (hrs) -As required.

OPEN CRANKCASE VENTILATION (OCV) FILTER

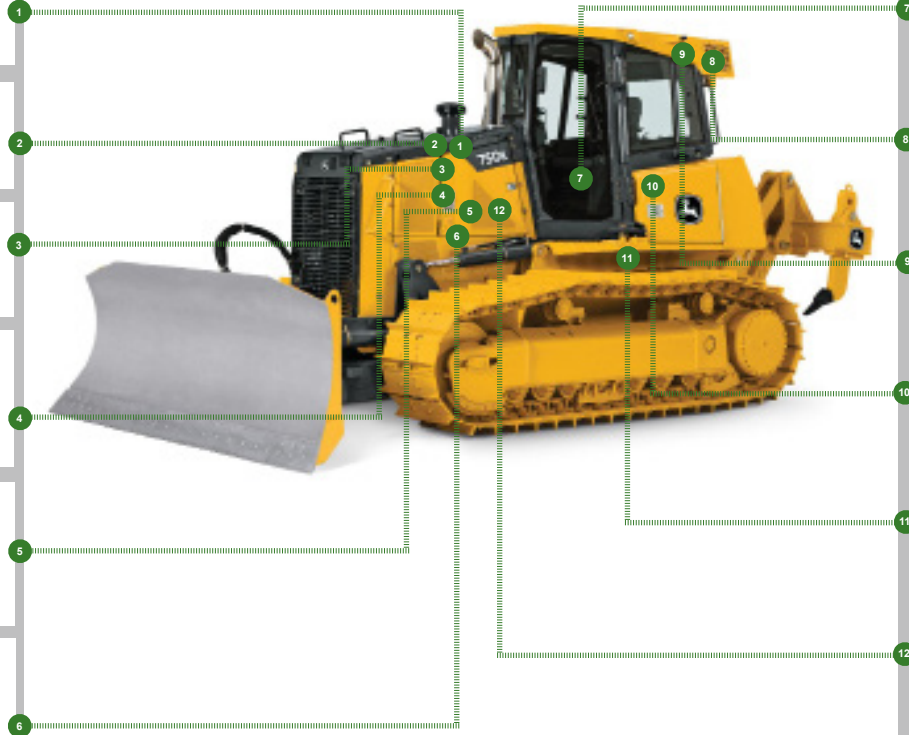
[DZ105796](#)

Interval (hrs) -2000.

PRIMARY AND FINAL FUEL FILTER KIT

[RE541746](#)

Interval (hrs) -500.



HYDRAULIC OIL FILTER

[AT318160](#)

Interval (hrs) -2000.

CAB RECIRCUCLATING AIR FILTER

[AT315957](#)

Interval (hrs) -As required.

CAB FRESH AIR FILTER (2 USED)

[AT191102](#)

Interval (hrs) -As required.

AUXILIARY FUEL FILTER AND WATER SEPARATOR (IF EQUIPPED)

[AT365870](#)

Interval (hrs) -500.

TRANSMISSION CHARGE OIL FILTER

[AT318160](#)

Interval (hrs) -2000.

ENGINE ROCKER ARM COVER GASKET

[R528743](#)

Interval (hrs) -2000.



CLICK PART NUMBER TO BUY

*See operator's manual for additional details.

REPLACEMENT PARTS GUIDE

750K (PIN: 1T0750KX__E216966—270478)
 850K (PIN: 1T0850KX__E178122—271265)

Part Description	Part Number	Qty or capacity	Change Interval In Hours
John Deere Plus-50™ II Engine Oil ¹ 	TY26674	24.6 L(6.5 gal)	500
John Deere Hydrau™ Hydraulic Oil ¹ 	TY27367	106.0 L(28.0 gal)	2000
John Deere Hydrau™ Hydrostatic Transmission Oil ¹ 	TY27367	106.0 L(28.0 gal)	2000
John Deere Hy-Gard™ Inner Final Drive Oil (each side) ¹ 850K 850K XLT 750K 750K XLT 	TY6354	8.0 L(2.1 gal)	1000
John Deere Hy-Gard™ Inner Final Drive Oil (each side) ¹ 850K WLT 850K WLT WH 850K WT 850K WT WH 750K LGP" 	TY6354	15.6 L(4.1 gal)	1000
John Deere Hy-Gard™ Inner Final Drive Oil (each side) ¹ 850K LGP 850K LGP WH 	TY6354	18.5 L(4.9 gal)	1000
John Deere Hy-Gard™ Outer Final Drive Oil (each side) ¹ 850K 	TY6354	15.6 L(4.1 gal)	1000
John Deere Hy-Gard™ Outer Final Drive Oil (each side) ¹ 750K 	TY6354	14.6 L(3.9 gal)	1000
John Deere Hy-Gard™ Outer Final Drive Oil (each side) ¹ API GL-5 Track Frame Pivot Shaft Oil1 	TY6345	1.7 L(1.7 qt)	1000
John Deere COOL-GARD™ II Pre-Mix 850K 	TY26575	38.0 L(10.1 gal)	6000
John Deere COOL-GARD™ II Pre-Mix 750K 	TY26575	36.4 L(9.6 gal)	6000

REPLACEMENT PARTS GUIDE

750K (PIN: 1T0750KX__E216966—270478)
 850K (PIN: 1T0850KX__E178122—271265)

Fluid Analysis Kits ²			
Diesel Engine Oil	AT346594	1	500
Hydraulic Oil	AT346594	1	500
Transmission Oil	AT346594	1	500
Inner and Final Drive Oil	AT346594	4	500
Engine Coolant	TY26873	1	500
Diesel Fuel	AT180344	1	500

¹See operator's manual for recommended oil type and oil viscosities based on operating temperatures.

²Based on fluid analysis results, intervals may need to be adjusted for operating conditions. Consult an authorized John Deere dealer.

Plus-50 is a trademark of Deere & Company

Hydrau is a trademark of Deere & Company

Hy-Gard is a trademark of Deere & Company

COOL-GARD is a trademark of Deere & Company

Service Intervals

750K (PIN: 1T0750KX__E216966—270478)

850K (PIN: 1T0850KX__E178122—271265)

As Required	
<input type="checkbox"/> Inspect belt and check tension	<input type="checkbox"/> Check and adjust track sag
<input type="checkbox"/> Check engine air filter restriction indicator	<input type="checkbox"/> Clean cooler cores
<input type="checkbox"/> Clean or replace cab fresh air filter	<input type="checkbox"/> Clean or replace cab recirculating air filter
<input type="checkbox"/> Service exhaust filter	<input type="checkbox"/> Drain sediment from fuel tank
<input type="checkbox"/> Strata cap cleanout procedure (if equipped)	<input type="checkbox"/> Maintaining mechanical angle blade (if equipped)
<input type="checkbox"/> Check and adjust trunnion bearing clearance (if equipped)	<input type="checkbox"/> Check and adjust pushbeam bearing clearance (if equipped)
Every 10 Hours or Daily	
<input type="checkbox"/> Check engine oil level	<input type="checkbox"/> Check transmission oil level
<input type="checkbox"/> Check coolant level at surge tank	<input type="checkbox"/> Check hydraulic system oil level
<input type="checkbox"/> Lubricate C-frame dozer linkage (if equipped)	<input type="checkbox"/> Check or drain primary fuel filter
<input type="checkbox"/> Check or drain auxiliary fuel filter and water separator (if equipped)	<input type="checkbox"/> Lubricate pushbeam dozer linkage (if equipped)
Every 50 Hours	
<input type="checkbox"/> Lubricate right and left end crossbar pivot	<input type="checkbox"/> Lubricate lift cylinder pivots
<input type="checkbox"/> Lubricate rear ripper (if equipped)	
Every 250 Hours	
<input type="checkbox"/> Check inner and outer final drive housings oil level	<input type="checkbox"/> Take engine oil sample
<input type="checkbox"/> Check blade shim adjustment	
Every 500 Hours	
<input type="checkbox"/> Drain and refill engine oil and replace filter	<input type="checkbox"/> Take diesel fuel sample
<input type="checkbox"/> Replace primary and final fuel filters	<input type="checkbox"/> Take engine coolant sample
<input type="checkbox"/> Check battery electrolyte level; clean and tighten terminals	<input type="checkbox"/> Take inner and outer final drive oil sample
<input type="checkbox"/> Check fuel fired coolant heater (if equipped)	<input type="checkbox"/> Take transmission oil sample
<input type="checkbox"/> Replace auxiliary fuel filter and water separator (if equipped)	<input type="checkbox"/> Take hydraulic oil sample
Every 1000 Hours	
<input type="checkbox"/> Drain and refill inner and outer final drive oil	<input type="checkbox"/> Check track frame pivot shaft bushing oil
<input type="checkbox"/> Check air intake hoses	<input type="checkbox"/> Check coolant
Every 2000 Hours	
<input type="checkbox"/> Replace open crankcase ventilation (OCV) filter	<input type="checkbox"/> Check and adjust engine valve lash
<input type="checkbox"/> Drain and refill transmission oil and replace transmission charge oil filter	<input type="checkbox"/> Drain and refill hydraulic system oil and replace filter
Every 6000 Hours	
<input type="checkbox"/> Drain and refill engine cooling system	