



REPLACEMENT PARTS GUIDE

744K Series II (PIN: 1DW744K__DXXXXXX—) / (PIN: 1DW744K__CXXXXXX—)



**ENGINE AIR FILTER ELEMENT
SECONDARY - [AT175224](#)**

Interval (hrs) - 1000.



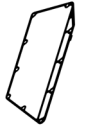
**HYDRAULIC RESERVOIR
BREATHER FILTER [AM39653](#)**

Interval (hrs) - 500.



**FUEL TANK BREATHER FILTER
[RE52504](#)**

Interval (hrs) - 2000.



**ROCKER ARM COVER GASKET
[R527884](#)**

Interval (hrs) - 2000.



**ENGINE AIR FILTER ELEMENT PRIMARY
[AT223226](#)**

Interval (hrs) - 1000.



**ENGINE AIR CLEANER DUST UNLOADER
VALVE - [T158495](#)**

Interval (hrs) - 1000.



**IN-LINE FUEL STRAINER
[AT223493](#)**

Interval (hrs) - 500.



**AUXILIARY FUEL FILTER AND WATER
SEPARATOR (IF EQUIPPED) - [AT365869](#)**

Interval (hrs) - 500.



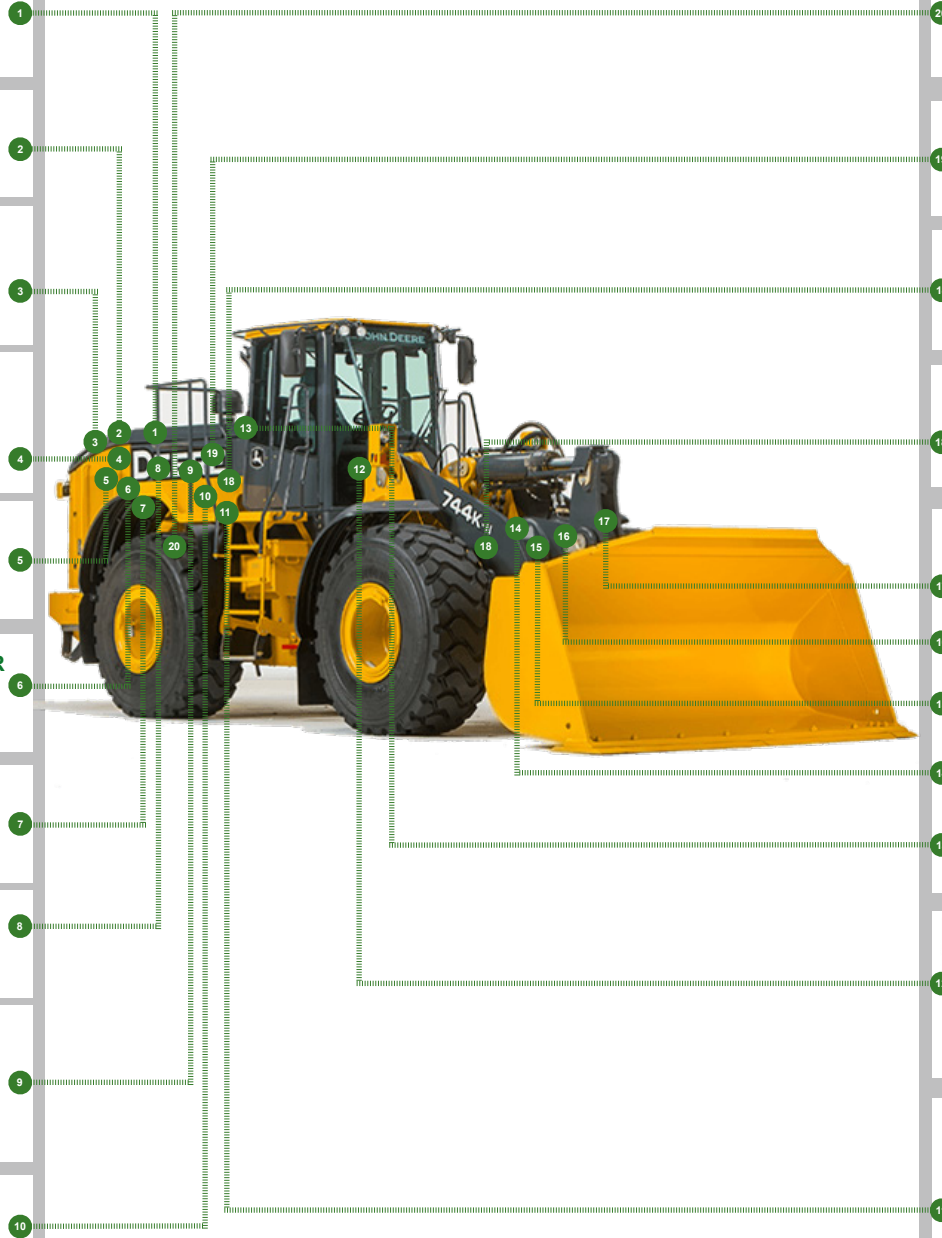
**PRIMARY AND FINAL FUEL FILTER
ELEMENT
[RE525523](#)**

Interval (hrs) - 500.



**OIL FILTER
[RE521420](#)**

Interval (hrs) - 250.



**TRANSMISSION OIL FILTERS
[AT336140](#)**

Interval (hrs) - 2000.



**FAST FILL FUEL BREATHER FILTER
[T225008](#) (IF EQUIPPED)**

Interval (hrs) - 500.



**CRANKSHAFT DAMPER
[AT426103](#)**

Interval (hrs) - 4000.



**AXLE OIL FILTER
[AH128449](#)**

Interval (hrs) - 1000.



**OUTER PIN SEALS
BOOM TO ATTACHMENT JOINT
[AT341092](#)**



**ATTACHMENT-TO-BUCKET LINK JOINT
[AT410593](#)**



**ATTACHMENT LINK-TO-BELLCRANK JOINT
[AT410593](#)**



**BELLCRANK-TO-BOOM JOINT
[AT410592](#)**



**STEERING CYLINDER JOINT
[AT276674](#)**

Interval (hrs) - As Required.



**CAB FRESH AIR FILTER ELEMENT
[AT191102](#)**



**CAB RECIRCULATION AIR FILTER
ELEMENT - [AT307501](#)**

Interval (hrs) - As Required.



**HYDRAULIC SYSTEM RETURN
FILTERS
[AT335977](#)**

Interval (hrs) - 4000.










CLICK PART NUMBER TO BUY

*See operator's manual for additional details.

REPLACEMENT PARTS GUIDE

744K Series II (PIN: 1DW744K__DXXXXX—) / (PIN: 1DW744K__CXXXXX—)

Part Description	Part Number	Qty or capacity	Change Interval In Hours
John Deere Plus-50™ II Engine Oil ³ 	TY26674	34.0 L (9.0 gal)	500
John Deere Hydrau XR™ Hydraulic Oil ³ 	TY27318	159.0 L (42.0 gal.)	4000
COOL-GARD™ II Pre-Mix 	TY26575	44.8 L (11.8 gal)	6000
Coolant Extender 	TY26603	As Required	As Required
John Deere Hy-Gard™ Transmission 	TY6354	28.0 L (7.4 gal)	2000
John Deere Hy-Gard™ Park Brake 	TY6354	0.71 L (24.0 oz)	1000
John Deere Hy-Gard™ Front and Rear Axle 	TY6354	55.0 L (14.5gal.)	2000
Fluid Analysis Kits⁴			
Diesel Engine Oil	AT346594	1	250
Transmission Oil	AT346594	1	500
Axle Oil	AT346594	2	500
Hydraulic Oil	AT346594	1	500
Diesel Fuel	AT346594	1	500
Engine Coolant	TY26873	1	500
COOL-GARD™ II Test Strips	TY26605	1	As Required
³ See operator's manual for recommended oil type and oil viscosities based on operating temperatures. ⁴ Based on fluid analysis results, intervals may need to be adjusted for operating conditions. Consult an authorized John Deere dealer.			

Plus-50 is a trademark of Deere & Company

Hy-Gard is a trademark of Deere & Company

Hydrau is a trademark of Deere & Company

COOL-GARD is a trademark of Deere & Company



Service Intervals

744K Series II (PIN: 1DW744K__ _DXXXXXX—)

744K Series II (PIN: 1DW744K__ _CXXXXXX—)

As Required	
• Inspect tires and check pressure	• Replace fast fill fuel breather filter—if equipped
• Check wheel bolt/nut torque	• Drain water from auxiliary fuel filter—if equipped
• Inspect engine air cleaner elements	• Check windshield washer fluid level
• Inspect air conditioner compressor and alternator belt	• Drain water from primary fuel filter and water separator
• Check rear camera and radar object detection (ROD) system—if equipped	• Drain water from final fuel filter
• Clean cooler cores	• Check and clean or replace cab fresh air filter
• Check and clean or replace cab recirculating air filter	
Every 10 Hours or Daily	
• Clean or replace engine air cleaner dust unloader valve	• Check hydraulic system oil level
• Check coolant level at surge tank	• Check transmission oil level
• Check engine oil level	• Inspect outer pin seals
Initial Service—100 Hours¹	
• Drain and refill front and rear axle oil	• Replace axle oil filters
Every 100 Hours	
• Lubricate loader linkage and cylinder pivots	
Initial Service—250 Hours²	
• Drain and refill engine oil and replace filter	
Every 250 Hours	
• Take engine oil sample	
Every 500 Hours	
• Check battery water level and terminals	• Lubricate front and rear shaft seals on park brake
• Check front and rear axle oil level	• Check park brake oil level
• Check air intake hoses and charge air cooler tube couplings	• Lubricate driveline upper and lower sliding joints and lower U-joints
• Drain and refill engine oil and replace filter	• Take transmission oil sample
• Replace fast fill fuel breather filter—if equipped	• Take hydraulic oil sample
• Replace in-line fuel strainer	• Take axle oil sample
• Replace primary fuel filter	• Take diesel fuel sample
• Replace final fuel filter	• Take engine coolant sample
• Check ride control accumulator	• Replace auxiliary fuel filter—if equipped
• Replace hydraulic reservoir breather filter	• Lubricate front and rear axle shaft seals
Every 1000 Hours	
• Replace engine air cleaner elements	• Replace axle oil filters
• Replace engine air cleaner dust unloader valve	• Clean hydraulic fan drive case drain in-line screens
• Check coolant condition	• Lubricate frame hinge pivots
• Remove and clean engine crankcase vent tube	• Drain and refill park brake oil
Every 2000 Hours	
• Drain and refill front and rear axle oil	• Rerun transmission clutch calibration (cab monitor)
• Check and adjust engine valve lash	• Clean front and rear axle oil recirculation screens
• Drain and refill transmission oil and replace filters	• Replace outer pin seals
Every 4000 Hours	
• Clean hydraulic pump case drain in-line screens	• Replace hydraulic system return filters
• Clean hydraulic system fill strainer	• Drain, flush, and refill hydraulic system oil
• Replace crankshaft damper	
Every 5000 Hours	
• Check driveline damper for cracks	
Every 6000 Hours	
• Drain and refill cooling system	