

FILTER OVERVIEW WITH SERVICE INTERVALS AND CAPACITIES

5R Series (Stage IIIB) Tractors - 5090R(KK552301-), 5100R(KK552301-), 5115R(KK552301-), 5125R(KK552301-)

CAB

RECIRCULATION AIR FILTER

[RE195491](#)

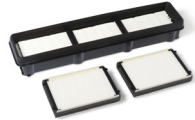
Clean every 600 hours, and as required per conditions (if equipped).



CAB

ACTIVATED CARBON FILTER - [SJ14288](#)

Replace after every 250 hours.



CAB

FRESH AIR FILTER

[RE198488](#)

Clean every 600 hours and as required per conditions (if equipped).



ENGINE

DIESEL PARTICULATE FILTER

[RE568454](#)

See your John Deere dealer for service.

(Click here for [capacity](#))



ENGINE

FINAL FUEL FILTER

[RE544394](#), [RE544391](#)

Replace every 500 hours.



ENGINE

PRIMARY FUEL FILTER

[RE546336](#), [RE546394](#)

Replace every 500 hours.



ENGINE

OPEN CRANKCASE VENTILATION (OCV) FILTER

[DZ105796](#), [DZ105100](#)

Replace after every 1500 hours.



ENGINE

OIL FILTER - [RE504836](#)

Replace after initial 500 hours. John Deere™ filter is used interval may be extended to 500 hours.

(Click here for [capacity](#))



TRANSMISSION

HYDRAULIC FILTER OPEN CENTER

[RE577612](#)

Replace after 100 hours and every 600 hours.

(Click here for [capacity](#))



TRANSMISSION

HYDRAULIC FILTER CLOSED CENTER

[RE577612](#)

Replace after every 1500 hours.

(Click here for [capacity](#))

ENGINE

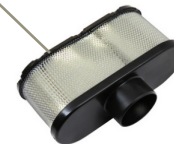
PRIMARY AIR FILTER

[SU20768](#)

SECONDARY AIR FILTER

[RE253519](#)

Service every 1200 hours or as required per conditions.



JOHN DEERE

Genuine Parts and Service

http://www.deere.com/en_US/parts/service/support/filter/overviews

CAPACITIES

5R Series (Stage IIIB) Tractors - 5090R(KK552301-), 5100R(KK552301-), 5115R(KK552301-), 5125R(KK552301-)

CAPACITIES (Approximate):

Fuel Tank:

..... 178 L (47 gal)

Cooling System:

Cool-Gard™ II

..... 16.1 L (4.25 gal)

Engine Crankcase With Filter:

Plus-50™ II

..... 11.6 L (3.1 gal)

Transmission/Hydraulics:

Hy-Gard™

..... 47.5 L (12.5 gal)

Mechanical Front Wheel Drive (MFWD) Axle Housing:

MFWD Differential Housing

..... 5.0 L (1.3 gal)

Mechanical Front Wheel Drive (MFWD) Hubs (Each):

Hy-Gard™

..... 0.8 L (0.21 gal)

Suspended Front Axle Differential Housing:

Hy-gard™

..... 2.2 L (0.6 gal)

Suspended Front Axle Wheel Hub (Each):

Hy-gard™

..... 0.6 L (0.16 gal)

Front PTO:

J20D

..... 3.1 L (0.8 gal)

[Return to Filter Overview](#)

