

# FILTER OVERVIEW WITH SERVICE INTERVALS AND CAPACITIES

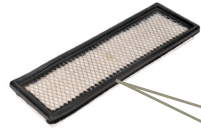
5R Series (Stage IIIB) Tractors - 5090R(KK552301-), 5100R(KK552301-), 5115R(KK552301-), 5125R(KK552301-)

## CAB

### RECIRCULATION AIR FILTER

[RE195491](#)

Clean every 600 hours, and as required per conditions (if equipped).



## CAB

### ACTIVATED CARBON FILTER - [SJ14288](#)

Replace after every 250 hours.



## CAB

### FRESH AIR FILTER

[RE198488](#)

Clean every 600 hours and as required per conditions (if equipped).



## ENGINE

### DIESEL PARTICULATE FILTER

[RE568454](#)

See your John Deere dealer for service.

(Click here for [capacity](#))



## ENGINE

### FINAL FUEL FILTER

[RE544394](#), [RE544391](#)

Replace every 500 hours.



## ENGINE

### PRIMARY FUEL FILTER

[RE546336](#), [RE546394](#)

Replace every 500 hours.



## ENGINE

### OPEN CRANKCASE VENTILATION (OCV) FILTER

[DZ105796](#), [DZ105100](#)

Replace after every 1500 hours.



## ENGINE

### OIL FILTER - [RE504836](#)

Replace after initial 500 hours. John Deere™ filter is used interval may be extended to 500 hours.

(Click here for [capacity](#))



## TRANSMISSION

### HYDRAULIC FILTER OPEN CENTER

[RE577612](#)

Replace after 100 hours and every 600 hours.

(Click here for [capacity](#))



## TRANSMISSION

### HYDRAULIC FILTER CLOSED CENTER

[RE577612](#)

Replace after every 1500 hours.

(Click here for [capacity](#))

## ENGINE

### PRIMARY AIR FILTER

[SU20768](#)

### SECONDARY AIR FILTER

[RE253519](#)

Service every 1200 hours or as required per conditions.



**JOHN DEERE**  
Genuine Parts and Service

[http://www.deere.com/en\\_US/parts/service/support/filter/overviews](http://www.deere.com/en_US/parts/service/support/filter/overviews)

# CAPACITIES

## 5R Series (Stage IIIB) Tractors - 5090R(KK552301-), 5100R(KK552301-), 5115R(KK552301-), 5125R(KK552301-)

### CAPACITIES (Approximate):

#### **Fuel Tank:**

..... 178 L (47 gal)

#### **Cooling System:**

##### **Cool-Gard™ II**

..... 16.1 L (4.25 gal)

#### **Engine Crankcase With Filter:**

##### **Plus-50™ II**

..... 11.6 L (3.1 gal)

#### **Transmission/Hydraulics:**

##### **Hy-Gard™**

..... 47.5 L (12.5 gal)

#### **Mechanical Front Wheel Drive (MFWD) Axle Housing:**

##### **MFWD Differential Housing**

..... 5.0 L (1.3 gal)

#### **Mechanical Front Wheel Drive (MFWD) Hubs (Each):**

##### **Hy-Gard™**

..... 0.8 L (0.21 gal)

#### **Suspended Front Axle Differential Housing:**

##### **Hy-gard™**

..... 2.2 L (0.6 gal)

#### **Suspended Front Axle Wheel Hub (Each):**

##### **Hy-gard™**

..... 0.6 L (0.16 gal)

#### **Front PTO:**

##### **J20D**

..... 3.1 L (0.8 gal)

[Return to Filter Overview](#)

