

# FILTER OVERVIEW WITH SERVICE INTERVALS AND CAPACITIES

## 410R / 412R Self-Propelled Sprayer

### ENGINE

**DIESEL EXHAUST FLUID (DEF) DOSING UNIT FILTER**  
[DZ114640](#)

Replace after every 3500 hours or every three years of operation, whichever occurs first, and as required.



### ENGINE

**AIR FILTER -** [AN207713](#)

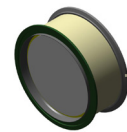
Replace as required.



### ENGINE

**DIESEL PARTICULATE FILTER (DPF)**  
[DZ115233](#)

Replace as required.



### ENGINE

**OIL FILTER -** [RE509672](#)

Replace after every 250 hours.



### ENGINE

**PRIMARY FUEL FILTER**  
[RE539465](#)

**FINAL FUEL FILTER**  
[DZ112918](#)

Replace after every 500 hours. (Always replace both filters at the same time).



### ENGINE

**SECONDARY FUEL FILTER**  
[DZ110558](#)

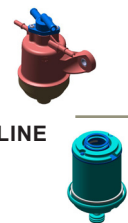
Replace after every 500 hours. (Always replace both filters at the same time).



### ENGINE

**DIESEL EXHAUST FLUID IN-LINE FILTER -** [DZ118548](#)  
**FILTER KIT -** [DZ110513](#)

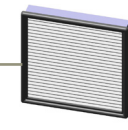
Replace Every 8500 Hours.



### CAB

**RECIRCULATION AIR FILTER**  
[RE595871](#)

Replace every 500 hours or annually, whichever occurs first, and as required.



### CAB

**AIR FILTER (CAT 4)**  
[KK57033](#)

Replace every 500 hours or annually, whichever occurs first, and as required.



### CAB

**FRESH AIR FILTER**  
[RE333567](#)

Replace every 500 hours or annually, whichever occurs first, and as required.



### CAB

**ACTIVATED CARBON AIR FILTER**  
[AKK41495](#)

Replace every 500 hours or annually, whichever occurs first, and as required.



### HYDRAULIC

**HYDRAULIC FILTER W/ HEAD**  
[AKK38329](#)  
**HYDRAULIC FILTER**  
[KK77228](#)  
**HYDRAULIC REPAIR KIT**  
[AKK41660](#)

Replace Every 1000 Hours.



### HYDRAULIC

**OIL FILTER**  
[AT318160](#)

Replace Every 1000 Hours.



# CAPACITIES

## 410R / 412R Self-Propelled Sprayer

### CAPACITIES (Approximate):

#### **Fuel Tank:**

..... 566 L (149 gal)

#### **Diesel Exhaust Fluid (DEF) Tank: John Deere™ Diesel Exhaust Fluid**

..... 29.5 L (7.8 gal)

#### **Engine Oil:**

#### **John Deere™ Plus-50™ II John Deere Break-In Plus™**

..... 29.5 L (7.8 gal)

#### **Cooling System with Heater: Cool-Gard™ II**

..... 31.4 L (8.3 gal)

#### **Crankcase including Filter: Plus-50™ II**

..... 31 L (8.2 gal)

#### **Hydraulic Reservoir: Torq-Gard Supreme™**

..... 95.6 L (25.3 gal)

#### **Hydraulic System:**

#### **John Deere - Torq-Gard™ 10W-30**

..... 208 L (55 gal)

#### **Final Drives (Each):**

#### **GL5 85W140 Gear Lube**

..... 1.5 L (0.39 gal)

[Return to Filter Overview](#)

