

# REPLACEMENT PARTS GUIDE

## 4024HF285 PowerTech E 2.4L OEM Engine



### ALTERNATOR



[RE529377](#) (12V, 70A) (3102)

[AH165975](#) (12V, 120A) (3103)

[RE522401](#) (24V, 50A) (3104)

[RE509080](#) (12V, 65A) (3105)

### STARTER



[RE540303](#) (12V, 2.6KW) (3007)

[RE540304](#) (12V, 2.2KW) (3002)

[RE540305](#) (24V, 3KW) (3003)

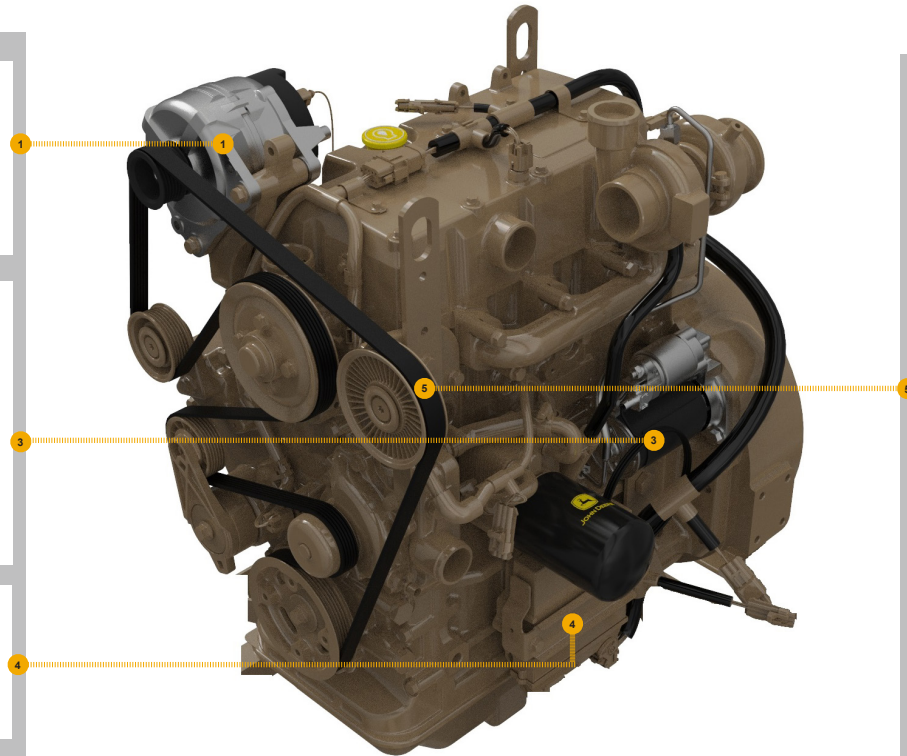
Includes Safety sign, Start motor with solenoid, cover and jumper.

### FUEL FILTER



[RE533026](#) (3518, 3522, 3525, 3526, 3535, 3540, 3541, 3542)

500 Hours of Operation or Every 12 Months.



### FAN BELT

[DZ11873](#) (LGTH = 2365 mm) (2401, 2409, 2423)

[DZ118741](#) (LGTH = 2340 mm) (2402, 2404, 2418)

[DZ118729](#) (LGTH = 2325 mm) (2403, 2411)

[DZ119646](#) (LGTH = 2440 mm) (2405, 2427)

[DZ118737](#) (LGTH = 2490 mm) (2406)

[DZ118735](#) (LGTH = 2460 mm) (2413, 2428)

[DZ118739](#) (LGTH = 2530 mm) (2415)

[DZ118736](#) (LGTH = 2480 mm) (2417)

[R523007](#) (LGTH = 2370 mm) (2419, 2420, 2422)

[R522751](#) (LGTH = 2395 mm) (2421, 2424)

[DZ118743](#) (LGTH = 2415 mm) (2426)

[R527924](#) (LGTH = 2645 mm) (2430, 2444)

[DZ118646](#) (LGTH = 2600 mm) (2431)



# REPLACEMENT PARTS GUIDE

## 4024HF285 PowerTech E 2.4L OEM Engine



### CRANKSHAFT PULLEY

- [RE520244](#) (OD = 140 mm) (1301, 1302)
- [RE523315](#) (OD = 160 mm) (1303)



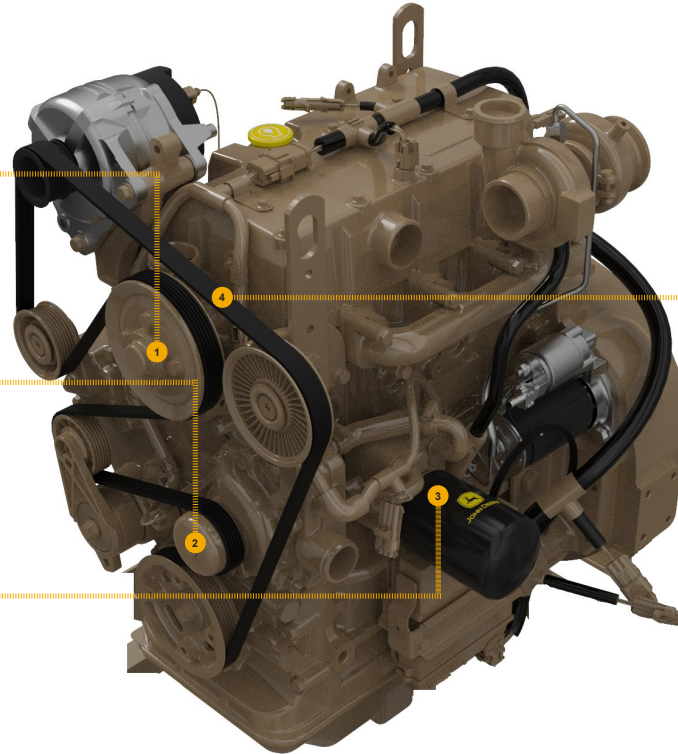
### FAN PULLEY

- [R505808](#) (OD = 144.5 mm) (8601)
- [R516401](#) (OD = 135 mm) (8602)
- [R516400](#) (OD = 167.5 mm) (8603)
- [R520415](#) (OD = 144.5 mm) (8604)
- [R520414](#) (OD = 167.5 mm) (8605)
- [R520462](#) (OD = 135 mm) (8606)



### OIL FILTER

- [RE519626](#) (8801)
- 500 Hours of Operation or Every 12 Months.



### FAN BELT

- [R527925](#) (LGTH = 2650 mm) (2432)
- [DZ118747](#) (LGTH = 2675 mm) (2433)
- [R527917](#) (LGTH = 2570 mm) (2434)
- [DZ118745](#) (LGTH = 2635 mm) (2435, 2454)
- [R527930](#) (LGTH = 2715 mm) (2436, 2447)
- [R527918](#) (LGTH = 2580 mm) (2437, 2442)
- [DZ118740](#) (LGTH = 2590 mm) (2438)
- [DZ118746](#) (LGTH = 2670 mm) (2439)
- [R527935](#) (LGTH = 2850 mm) (2440)
- [DZ118744](#) (LGTH = 2610 mm) (2441)
- [R527922](#) (LGTH = 2620 mm) (2443)
- [DZ118748](#) (LGTH = 2680 mm) (2445)
- [R527929](#) (LGTH = 2690 mm) (2446)
- [R527931](#) (LGTH = 2755 mm) (2448, 2450)
- [R527932](#) (LGTH = 2775 mm) (2451)
- [R527934](#) (LGTH = 2815 mm) (2452, 2455)
- [R527933](#) (LGTH = 2790 mm) (2453)



# REMAN PARTS GUIDE

## PowerTech E 2.4L OEM Engine (4024HF285)



### FUEL INJECTION PUMP



[SE501960](#) (REMAN FOR [RE534960](#))  
(1645, 1662)

### FUEL INJECTION NOZZLE



[SE501961](#) (REMAN FOR [RE528525](#))  
(1645)

[SE501962](#) (REMAN FOR [RE529390](#))  
(1662)

### ALTERNATOR



[SE501343](#) (REMAN FOR [AH165975](#))  
(12V, 120A) (3103)

[SE501831](#) (REMAN FOR [RE529377](#))  
(12V, 70A) (3102)

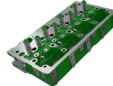
### WATER PUMP



[SE502114](#) (REMAN FOR [RE545573](#))  
(2001)

[SE502115](#) (REMAN FOR [RE545572](#)) (2002)

### CYLINDER HEAD



[SE501606](#) (REMAN FOR [RE535827](#)) (5105)

### CAMSHAFT



[SE502125](#) (REMAN FOR [RE539086](#))  
(4622, 4623)

### CONNECTING RODS



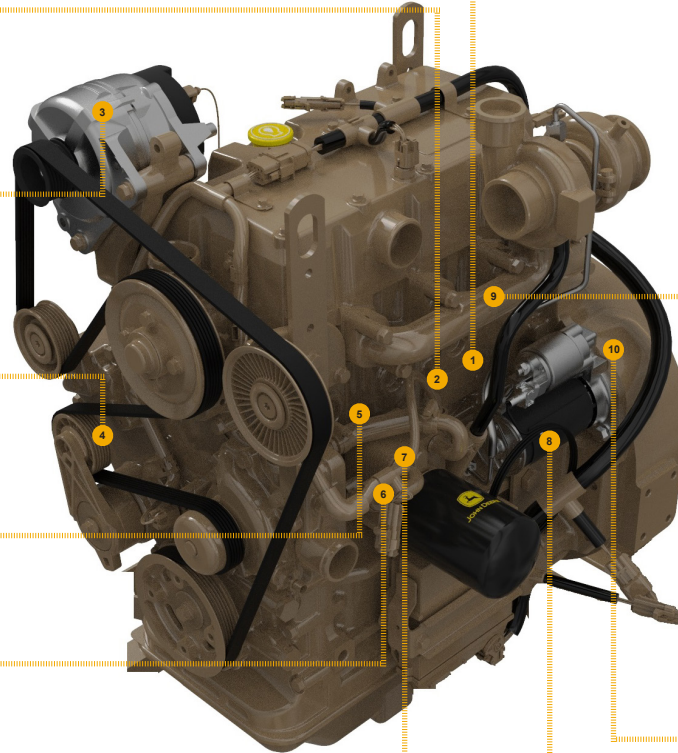
[SE501898](#) (REMAN FOR [RE504544](#))  
(4814)

### STARTER



[RM100157](#) (REMAN FOR [RE508922](#))  
(12V, 2.2KW) (3002)

[RM100034](#) (REMAN FOR [RE540303](#))  
(12V, 2.6KW) (3007)



### COMPLETE BLOCK ASSEMBLY

[SE502102](#) (REMAN FOR [RE536714](#))

[SE502103](#) (REMAN FOR [RE536715](#))

[SE502104](#) (REMAN FOR [RE536717](#))



(Marked R522220) (Also order RE536448, TY9477 AND PM710XX280) (Piston Marked R527622) (Camshaft Marked R525718) (With Cylinder Block Code 4618)

[SE502325](#) (REMAN FOR [RE539242](#))

(Marked R522220) (Also order RE536448, TY9477 AND PM710XX280) (USE WITH CODE 4623)

[SE502101](#) (REMAN FOR [RE536712](#))

(With Balancer Shaft) (Marked R522220) (Also order RE536448, TY9477 AND PM710XX280) (WITH CYLINDER BLOCK CODE 4613) (PISTON MARKED R527622) (CAMSHAFT MARKED R525718)

[SE502100](#) (REMAN FOR [RE536711](#))

(Without Balancer Shaft) (WITH CYLINDER BLOCK CODE 4612)

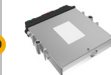
### CONTROLLER

[SE502950](#) (REMAN FOR [RE528702](#))

(LEVEL 18) (7282, 72AY, 72BS)

[SE502951](#) (REMAN FOR [RE528703](#))

(LEVEL 18) (7282, 72AY, 72BS)



**JOHN DEERE**  
Genuine Parts and Service