



REPLACEMENT PART GUIDE

3029HFU80 Power Unit 2.9L Gen Set (Stage III A Engine)



FAN BELT

[T24473](#) (LGTH = 1295 mm) (2402)



CRANKSHAFT PULLEY

[R501222](#) (OD = 170 mm) (1312)



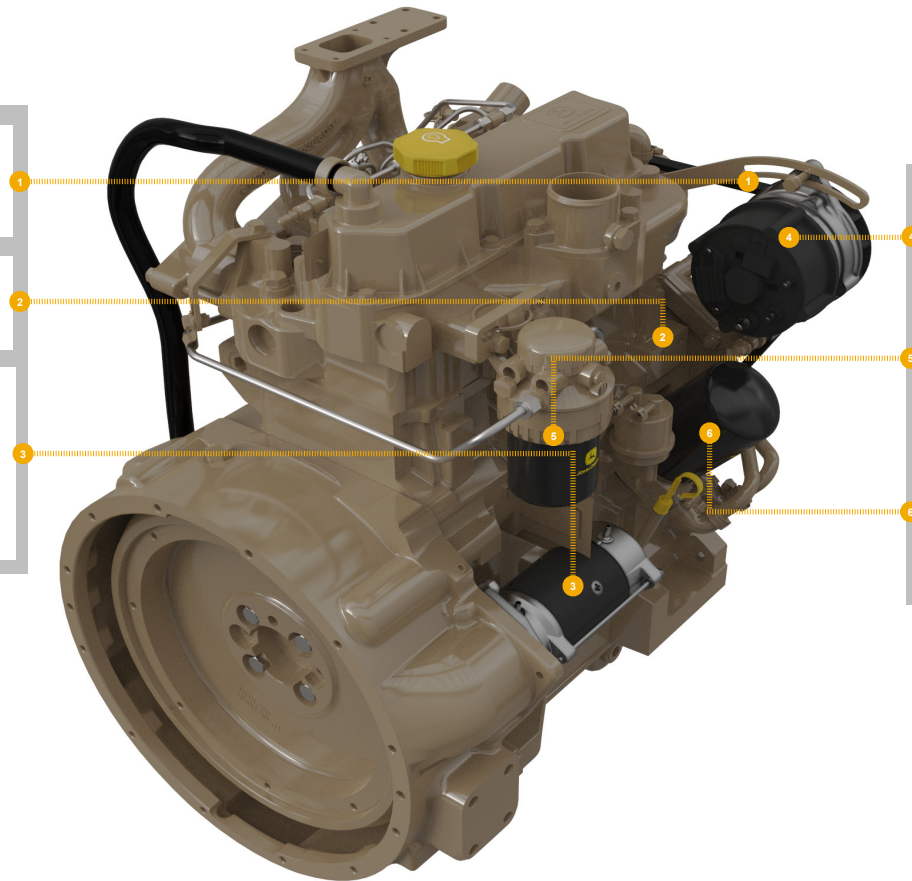
STARTER

[DZ110081](#) (ISKRA, 12 V, 3.4 KW) (3008)

[DZ110082](#) (24 V, 4 KW) (3025)

[RE528929](#) (24 V, 4 KW) (3066)

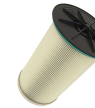
[RE546868](#) (12 V, 3.2 KW) (3071)



ALTERNATOR

[RE544045](#) (28 V, 50 A) (3119)

[RE509106](#) (ISKRA, 14 V, 65 A) (3143)



FUEL FILTER

[RE62418](#) Fuel Filter with Drain Valve(35DD)

500 hrs of operation or every 12 months.



OIL FILTER

[RE519626](#) (5939)

500 hrs of operation or every 12 months.



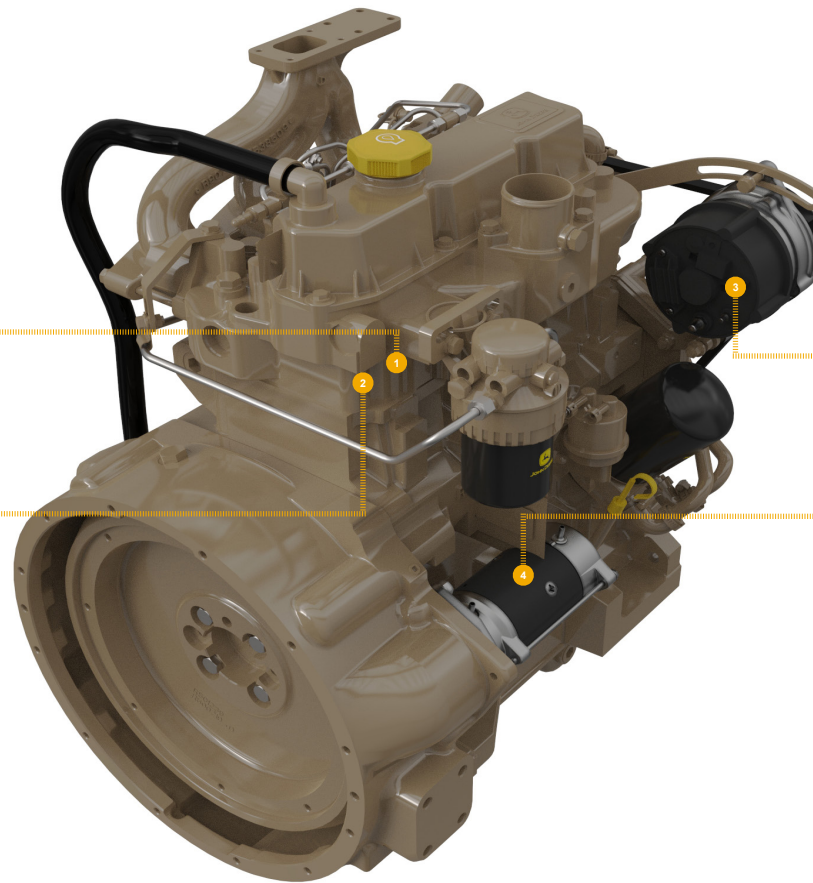
JOHN DEERE

Genuine Parts and Service



REMAN PARTS GUIDE

3029HFU80 Power Unit 2.9L Gen Set (Stage III A Engine)



CONNECTING ROD

[SE501571](#) (REMAN FOR [RE501674](#)) (4813)

1



FUEL INJECTION NOZZLE

[SE501101](#) (REMAN FOR [RE48786](#)) (16K7)

[SE501177](#) (REMAN FOR [RE515684](#)) (16KY)

2



FUEL INJECTION PUMP

[SE502042](#) (REMAN FOR [RE532974](#)) (12 V)
(16K7)

2



ALTERNATOR

[SE501835](#) (REMAN FOR [RE509106](#))
(ISKRA, 14 V, 65A) (3143)

3



STARTER

[SE501851](#) (REMAN FOR [DZ110081](#))
(12 V, 3.4 KW) (3008)

4

[SE502286](#) (REMAN FOR [DZ110082](#))
(24 V, 4 KW) (3025)



JOHN DEERE
Genuine Parts and Service