

Operations Center provides simple but powerful management tools that enable access to machine and crop data anytime, anywhere through the web, tablet, or phone. Learn more by going directly to <https://OperationsCenter.Deere.com>.

### Summary:

- Ownership Change Events – JDLink™ connection turned off if not reviewed within 14 days
- Machine Reports straight from your email

### Detailed release notes:

**If an Ownership Change Event is not reviewed within 14 days, JDLink connectivity will be turned off.**

#### Stay connected! Take care of your OCEs

JDLink connectivity will be turned off after 14 days of an Ownership Change Event (OCE) being generated on a piece of equipment. This will begin with the September 2023 Operations Center software update.

Ownership change events were first launched on 2 August 2023. It is an alert when there is a potential ownership change of equipment that has a paired JDLink modem (MTG). The alert is generated when the warranty customer information changes to someone who is not linked to the Operations Center organization where the equipment resides.

These alerts are to help keep equipment lists in Operations Center accurate and data flowing to the correct organization.

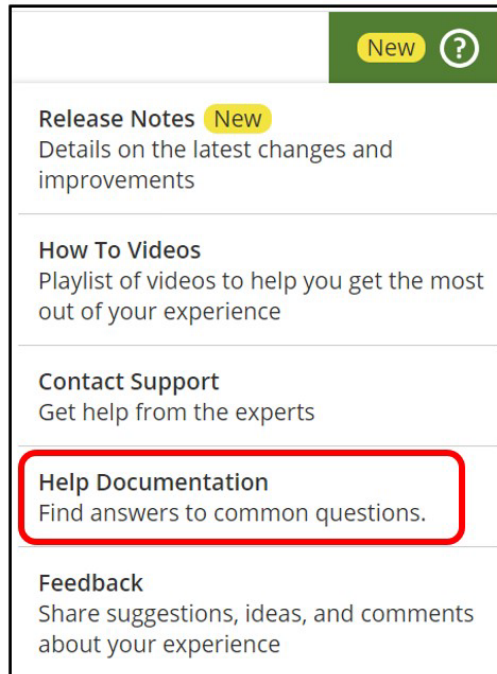
Learn more by going to [Equipment in Operations Center](#) and Property Center.

### Helpful Information

Ownership Change Events are easy to manage! You or your partnered John Deere dealer (with Equipment Level 3 access) can manage an OCE. If the equipment has a new owner, transfer the machine out of your organization with the same transfer functions that have always been available in Equipment.


[Learn more in help documentation](#) about the management features available in Equipment to keep your equipment list accurate. See additional online help documentation for this feature [here](#).

In Operations Center, the link to “Help Documentation” is found in the dropdown menu when you select the “?” in the upper right corner.



### **Machine Reports straight from your email**

You no longer have to sign into Operations Center to view a machine report, saving you time. Now you can download the desired report directly from the email. In the add a report flow in Machine Reports, select which report types you want included in the email (CSV, PDF, XLSX). Make sure you are subscribed to Machine Reports in Notifications Center under Manage Searches to receive the emailed reports.



## Weekly Engine Hours Report Completed

15 Aug 2023 2:01 PM

Connectivity report has been generated

Download the report (expires in 7 days):


- [CSV](#)
- [PDF](#)
- [XLSX](#)

View in [Machine Reports](#) (expires in 90 days)

**Organization**  
C&F

**Category**  
Machine Insights

**Severity**  
[Info](#)

 Operations Center

Map Setup Plan Analyze Sustainability

AvailableIgnoredExport

Saved Searches

Custom

Organizations Enable Filter

Categories

- Announcement
- Custom Alert
- Diagnostic Trouble Codes
- Equipment Management
- File Management

Manage Searches

Manage Searches

My Saved Searches

Searches by Organization

Notifications will be delivered to johnsmith@gmail.com

Search

Machine Reports 4276

Email: ☒

Search Criteria:

Organizations: 1

Categories: 1

Severity: All

Equipment: All

YES x 2 users (need 3rd user to match cert)

Email: ☐

CancelSave

## Enhanced Headland Management for more Automation and Guidance Solutions

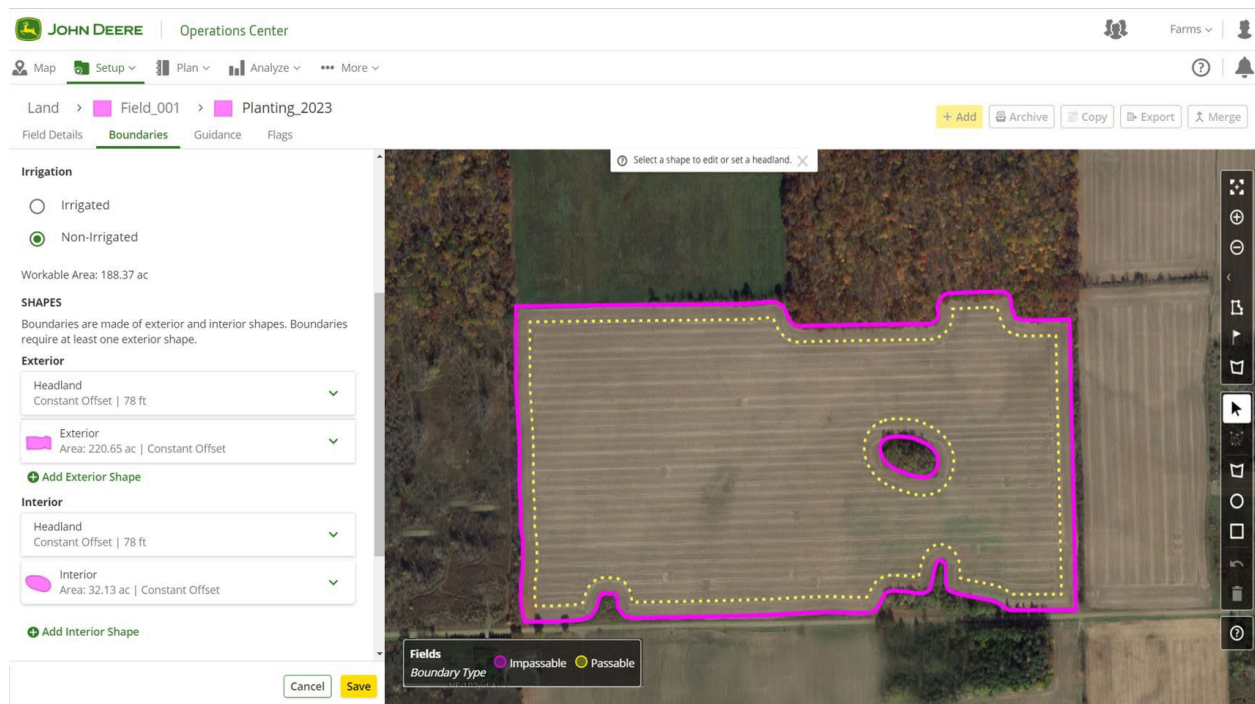
Headlands are needed to use many of the advanced guidance and automation features that are currently available on most of the John Deere equipment today.

And now it is easier than ever to set up! Use the new headland functions in Land to get more from your equipment's automation and advanced guidance features.

Be ready for go time. Seamlessly create, edit, view, and manage your headlands directly within Operations Center. There is no need to recreate them in the display every time you head to the field.

Manage headlands and share them across your fleet so you can:

- Reduce strain and fatigue on operators with AutoTrac Turn Automation
- Lower input costs with Section Control
- And much more!



## Correction Mode – NEW column in Land showing how field boundaries are created

The table view in Land now includes a “Correction Mode” column that will help you keep your farming operation running smoothly and with greater precision.

With the newly implemented “Correction Mode” column, you can easily track which correction mode was used to create your field boundaries.

The following correction modes will be available:

<b>SF-RTK</b>	Refers to boundaries that have been driven with SF-RTK correction mode
<b>RTK</b>	Refers to boundaries that have been driven with RTK (mobileRTK or radioRTK) correction mode
<b>RTKX</b>	Refers to boundaries that have been driven while receiver was in RTK-X mode. RTK-X occurs when the receiver establishes connection to an RTK base station and acquires full signal but loses connection to base station at some point during recording
<b>SF3</b>	Refers to boundaries that have been driven with SF3 correction
<b>SF2</b>	Refers to boundaries that have been driven with SF2 correction
<b>SF1</b>	Refers to boundaries that have been driven with SF1 correction
<b>WAAS/EGNOS</b>	Refers to boundaries that have been driven with WAAS/EGNOS correction
<b>Manual</b>	Refers to boundaries that have been hand drawn in Land on the map, or boundaries that have been generated from coverage (previous operation)
<b>---</b>	The information is unknown or undefined.  This means that the boundary could have been imported via SHP file or was created using a differential mode that is unrecognizable to John Deere. (Unknown, undefined)

This information is especially useful for you when you rely on precise automation features like Section Control or AutoTrac Turn Automation.

Accuracy is key when it comes to farming. With the new "Correction Mode" filter, you can quickly identify any boundaries that need to be archived or recreated with a more precise correction mode.

## Previous Release Notes

- [July 2023](#)
- [May 2023](#)
- [March 2023](#)
- [January 2023](#)
- [September 2022](#)
- [July 2022](#)
- [May 2022](#)
- [March 2022](#)
- [January 2022](#)
- [November 2021](#)
- [July 2021](#)

Download the Operations Center mobile for iOS® systems from the Apple® App Store® or for Android™ systems from the Google Play™ Store.

iOS is a trademark of Cisco Technology, Inc. used under license by Apple Inc. Apple and App Store are trademarks of Apple Inc. Android and Google Play are trademarks of Google LLC.

