

POWERTRAIN RELIFE PLUS

MACHINE REBUILD PROGRAM



JOHN DEERE





REBUILT **+** AND RUNNING

NOW THAT'S A PLUS

John Deere Powertrain ReLife Plus MACHINE REBUILD PROGRAM

*Extend the life of your machine with John Deere Powertrain ReLife Plus.
Design a comprehensive and flexible machine-rebuild solution that
protects your bottom line — and keeps you moving forward.*

**The John Deere Powertrain ReLife Plus program extends
the life of your machine with:**

- A thorough machine inspection by a certified technician.
- A complete set of John Deere Reman powertrain components.
- A John Deere Powertrain ReLife Plus warranty.

Plus, your John Deere dealer will help you understand the inspection results so you can tailor the program precisely to your needs and optimize your total owning and operating costs.

- + QUALITY PRODUCTS**
- + SUPERIOR SUPPORT**
- + THE POWER OF CHOICE**

CUSTOMIZED REBUILD SOLUTIONS, TAILOR-MADE TO YOUR BUSINESS

No two operations are the same, and you need options to minimize your costs while maximizing your productivity.

The John Deere Powertrain ReLife Plus program provides you with one more option to extend the life of your equipment without compromising the performance and reliability you have come to expect from it.

Starting with a fresh set of remanufactured or rebuilt major powertrain components, the Powertrain ReLife Plus program allows you to build on that strong foundation to create a customized repair plan unique to that particular machine. Certified technicians conduct a thorough inspection of your machine to help you identify where investments are needed to give it new life while still giving you the flexibility to consider work to the less critical areas of the machine.

HERE'S HOW IT WORKS:

JOHN DEERE POWERTRAIN RELIFE PLUS MACHINE REBUILD PROGRAM

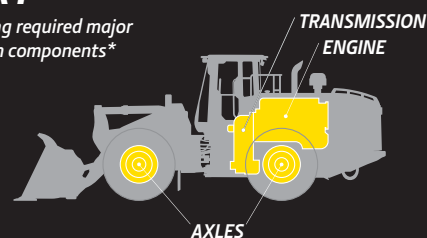
Give your machine new life — and keep it running — with these six simple steps:

STEP

1

START

*by replacing required major powertrain components**



STEP

2

REVIEW

results of machine evaluation with dealer

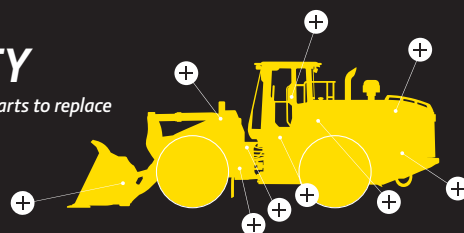


STEP

3

SPECIFY

any additional parts to replace



STEP

4

SELECT

ReLife warranty terms



STEP

5

WORK

is performed on your machine by certified John Deere dealer technicians



STEP

6

LET YOUR RELIFE MACHINE HELP

MANAGE OWNING AND OPERATING COSTS



*Major powertrain components vary by model. See your authorized dealer for details.

POWERTRAIN RELIFE PLUS

MODELS AND COMPONENTS

The following images show the major powertrain components required for replacement in order to qualify for a Powertrain ReLife Plus Extended Warranty.* Component-rebuild options available at John Deere Certified Rebuild Centers.

CRAWLERS

MODELS:

650J–850J
650K–1050K
650 P-Tier–1050 P-Tier
655K–755K
700L–850L

- Engine
- Hydrostatic Pumps
- Hydrostatic Motors
- Final Drives
- Main Hydraulic Pump (optional)



EXCAVATORS

MODELS:

270D LC–850D LC
245G LC–870G LC
245 P-Tier–870 P-Tier

- Engine
- Main Hydraulic Pump
- Swing Motors
- Swing Motor Gearboxes
- Rotary Manifold
- Propel Motors
- Final Drives

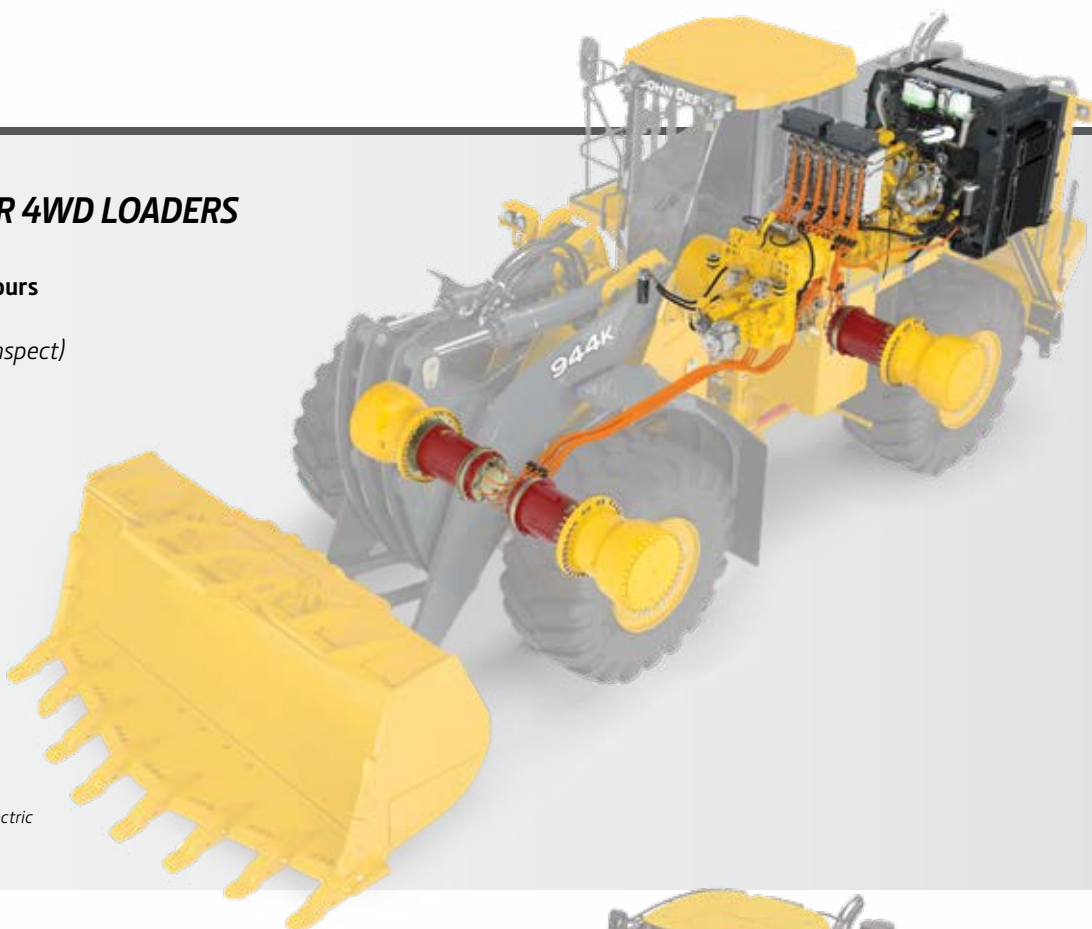
*John Deere Powertrain ReLife Plus warranty covers the major powertrain components specified herein. Models do not cover every product identification number. See your dealer for program details.

944K and 944 X-TIER 4WD LOADERS

MIDLIFE: 18,000–20,000 hours

- Engine
- High-Voltage (HV) Cables (inspect)
- Final Drives (rotate)
- Wheel Motors (rotate)
- Inverters (rotate)
- Hydraulic Pump (optional)

No proactive replacement planned for electric motors, generators, or inverters.



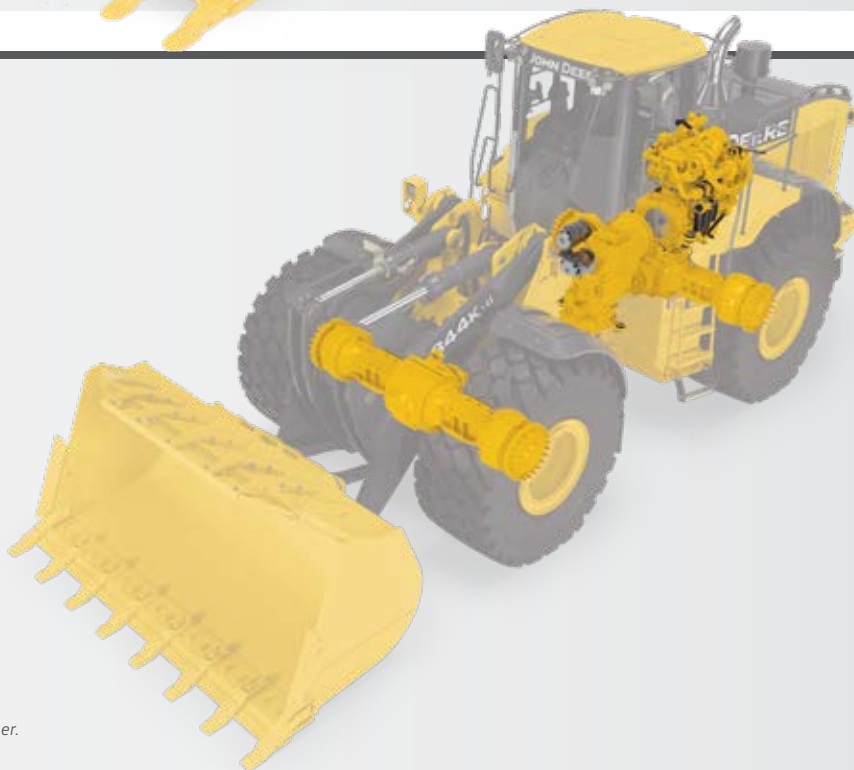
4WD LOADERS

MODELS:

624J–844J
624K–844K-III Aggregate Handler (AH)
624L–844L AH
624–904 G/P/X-Tier

- Engine
- Transmission
- Axles
- Main Hydraulic Pump (optional)

Models do not cover every product identification number.
See your dealer for program details.





MOTOR GRADERS

MODELS:

670D–872D
620G/GP–872G/GP

- Engine
- Transmission
- Axle
- Rear Tandem Hubs
- Hydraulic Pump (optional)
- 6WD Front Hubs (if equipped)
- 6WD Pump (if equipped)
- 6WD Motors (if equipped)



ARTICULATED DUMP TRUCKS

MODELS:

350D-II, 400D-II
260E–460E-II
260 P-Tier–460 P-Tier

- Engine
- Transmission/Transfer Case (if equipped)
- Axles
- Main Hydraulic Pump (optional)

Models do not cover every product identification number. See your dealer for program details.

SKIDDERS

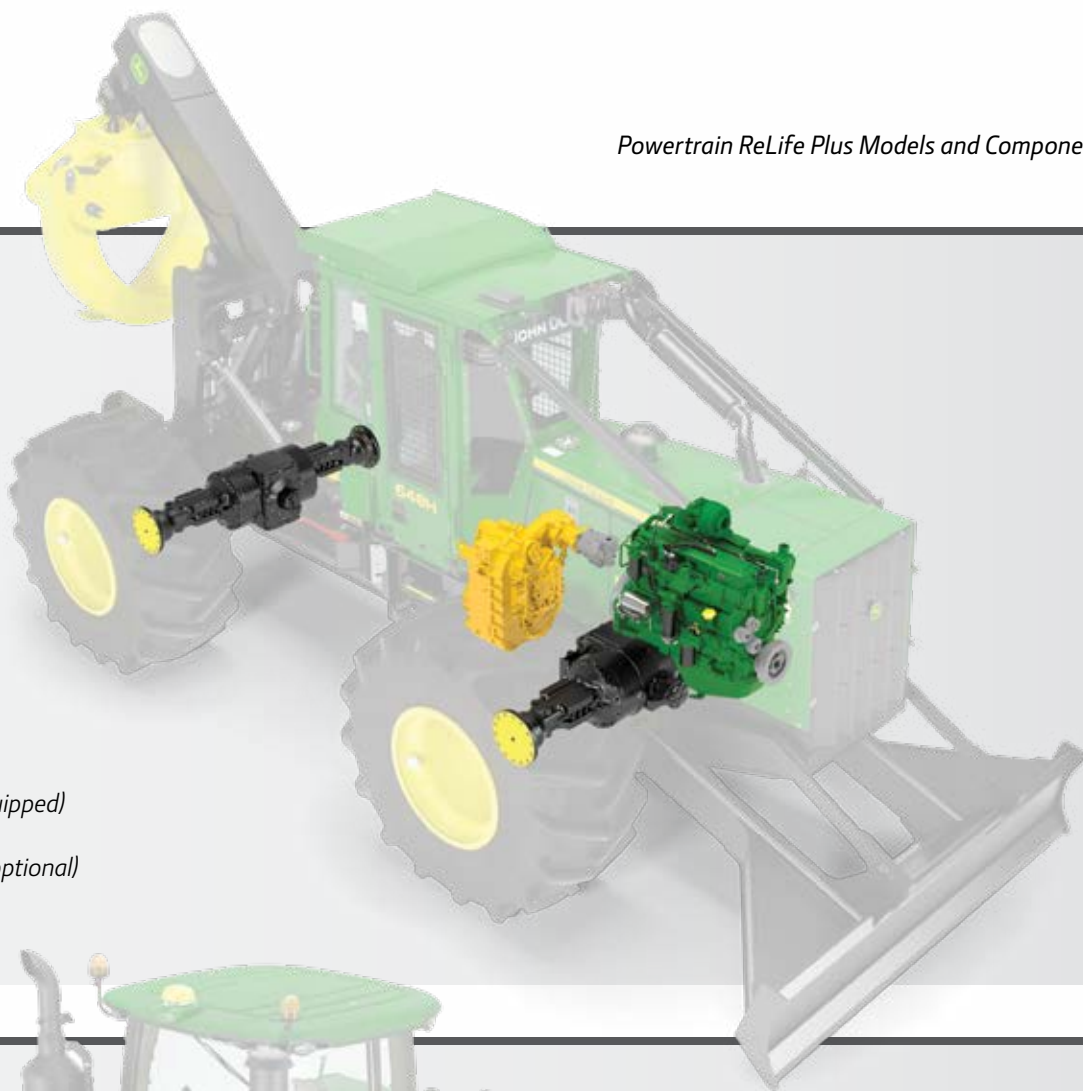
MODELS:

540G-III-748G-III

540H-848H

640L-948L-II

- Engine
- Transmission
- Torque Converter (if equipped)
- Axles
- Main Hydraulic Pump (optional)



SCRAPER TRACTORS

MODELS:

9520-9630

9460R-9620R

9R 490-9R 640

- Engine
- Transmission
- Axles
- Main Hydraulic Pump (optional)

PROTECT YOUR BOTTOM LINE

WARRANTY

We stand behind our products, which is why we provide a standard one-year unlimited-hour warranty on all John Deere components when installed by your authorized John Deere dealer.

We understand that doing business involves risk, so we're letting you choose how to protect your investments. With the Powertrain ReLife Plus program, you can extend the warranty coverage on major powertrain components replaced under the program up to four years/8,000 hours in 12-month or 1,000-hour increments. Extended warranty coverage is limited to major powertrain components; all other parts replaced during the ReLife event will be covered under the standard one-year parts warranty.

FINANCING

Our commitment to quality products and customer support doesn't stop at your machine. Our financing options provide solutions for managing your costs and increasing your profitability.

John Deere Financial provides a no-payment and no-interest option followed by a low-interest-rate term,* allowing you to get your machine back on the job and generating income before you make a payment. Longer-term low-rate options are also available, so contact your local dealer for more information on other financing options.

*Offer valid on qualifying purchases and subject to approved installment credit with John Deere Financial, for commercial use only. See your dealer for complete details and other financing options. Available at participating U.S. dealers.



DKERELIFE (24-08)

JohnDeere.com/ReLife
JohnDeere.ca/ReLife



JOHN DEERE