

953ML SHOVEL LOGGER



JOHN DEERE





OUT HERE, ORDINARY DOESN'T CUT IT.

Work can be demanding in your neck of the woods. That's why we rely on real-world insights from customers like you to tell us what you need to succeed. A long and wide undercarriage for singular stability. Dual-swing drive for productivity-boosting power. Expansive visibility. A large fuel tank to keep running — and producing — longer. A heavy-duty John Deere PowerTech™ Plus 9.0L diesel engine that delivers low total fluid consumption and high dependability. And something to really appreciate — a swamp-ready shovel-logger configuration to master marshland and muddy jobsites. This machine was built to tackle your most difficult tasks.

Sure-footed stability

Reliable tractive effort enables maneuverable negotiation of difficult terrain or wetlands and swamps, particularly in the southeastern United States. Long and wide undercarriage with wide track pads maintains a balance of stability and flotation in challenging conditions.

Shovel ready

The 953ML Shovel Logger is factory configured with a live-heel swamp-logger boom with grapple capacity of up to 60 inches, for tearing into tough, swampy conditions. Powerful hydraulics, smooth multifunctioning, and expansive reach are just some of the features that enable rewarding wetlands work.

Feel the boom

Long 36-foot shovel-logger boom with heel features a wide swath of 19 feet 4 inches, for more capability with less machine movement in swampy conditions.

953ML SHOVEL LOGGER



UP
TO

60" GRAPPLE CAPACITY

Get on track

Long and wide undercarriage combined with proven tractive effort and excellent ground clearance maximizes overall stability and maneuverability in a wide range of soft, spongy, and swampy conditions.

It hardly seems like work

Spacious climate-controlled cab features expansive jobsite visibility, ergonomic controls, and standard fully adjustable air-ride seat. Enhanced LED lighting package, including boom-mounted lights, enables you to work when you want, for as long as you want, no matter the jobsite environment.

Simplified service

Convenient access to service components helps simplify daily checks and preventative-maintenance tasks, so they get done on schedule, minimizing costly repairs down the road. Optional undercarriage-mounted toolbox provides convenient storage.

The image shows the operator's seat and controls inside the cab of a John Deere 953ML Shovel Logger. The cab is green and black. The operator's seat is black with a grey mesh backrest. The controls include a joystick, a gear shifter, and a control panel with a small screen and buttons. The background shows a forest with green trees.

953ML SHOVEL LOGGER

PUT TECHNOLOGY TO WORK IN THE WOODS AND AT THE OFFICE.

Coordinate your operation and your team's productivity from wherever your work takes you with John Deere Precision Forestry and our core technology solutions.



FEATURES

Core intelligence

Your John Deere Forestry machine arrives from the factory equipped with a powerful set of technologies and capabilities already built in. Each plays an important role in managing the health and performance of your overall equipment fleet:

- **JDLink connectivity** lets you track your equipment, see which machines are working, and know if they're being utilized properly and at maximum productivity and efficiency.
- Enabled through JDLink, **John Deere Connected Support™** leverages a suite of dealer and factory tools designed to deliver increased uptime and productivity, and lower daily operating costs.
- **Remote Diagnostics and Programming Capability** within John Deere Connected Support helps your dealer warn you of any issue with your machine — often before you know of the problem yourself — and initiate solutions without charging you for a technician's visit to your jobsite.
- Our advanced dual approach to **Machine Health** combines the expertise of the technology specialists at our dealerships with the data specialists at our central Machine Health Monitoring Center (MHMC). As part of John Deere Connected Support, information from thousands of connected machines flows through the MHMC, enabling our specialists to identify trends and develop new and improved preventative-maintenance and repair protocols.

Precision Forestry

Take the guesswork out of planning, implementing, and monitoring your logging operation. The tools of our production-planning and -tracking system expand on the core technology features that come standard in every John Deere Forestry machine to unleash a powerful new array of possibilities:

- **TimberMatic™ Maps** is an innovative onboard software solution that helps you reimagine your jobsites. Real-time production views, optimized routes, and shared wireless connections between machines make it easier than ever before to take your forestry operation to the next level.
- **TimberManager™** is a web-based solution for PCs, tablets, and mobile phones that allows you to follow jobsite progress. Combined with TimberMatic Maps, this software provides complete visibility of your operation — from land harvested to specific machines — so you can streamline communication, analyze tasks, and increase productivity:
 - **Remote Monitoring** keeps tabs on the health and performance of your fleet from wherever you are.
 - **Precise Progress Tracking** lets you set goals for your team to meet throughout the day.
 - **Live Production View** displays progress including tree count, area harvested, and estimated tonnage.
 - **Simplified Mapping** of machine data and GPS-based location tracking shows precise stem and log counts.
 - **Real-Time Updates** let you adjust course or eliminate tasks if needed to maintain steady workflow.
 - **Fleet Optimization** goes beyond machine management to help improve the efficiency of your business.



JDLink™ CONNECTIVITY

**NO ADDITIONAL COST
NO SUBSCRIPTIONS
NO RENEWAL DATES**

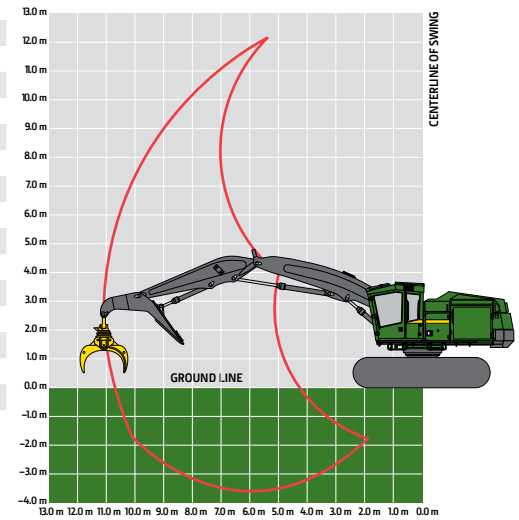
953ML

SHOVEL LOGGER SPECIFICATIONS

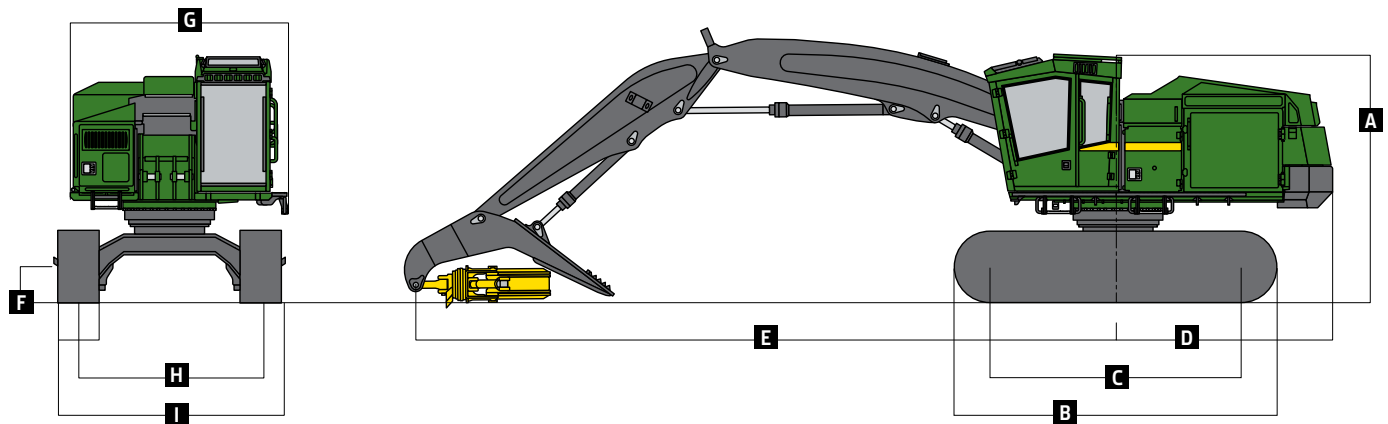
Engine	953ML
Manufacturer and Model	John Deere PowerTech™ Plus 6090PSS
Non-Road Emission Standard	EPA Final Tier 4/EU Stage IV
Displacement	9.0 L (549 cu. in.)
Peak Power at 1,900 rpm	246 kW (330 hp)
Net Peak Torque at 1,500 rpm	1527 Nm (1,126 lb.-ft.)
Cooling	
Fan Type	Suction type, hydraulically driven, variable speed, reversing
Hydraulics	
Closed center, pressure compensated, load sense	
Main Pump	Variable-displacement axial piston
Maximum Rated Flow	532 L/min. (141 gpm)
Attachment Pump	Dedicated variable-displacement axial piston
Maximum Rated Flow	209 L/min. (55 gpm)
Oil Filtration	2 main return filters, 10-micron return with bypass, 1 case-drain strainer, 25 micron
Electrical	
Voltage	24 volt
Number of Batteries	2 x 12 volt
Alternator Rating	200 amp
Work Lights	LED (14)
Optional Boom Lighting	LED (2)
Service Lights	LED (3)
Undercarriage	
Integral track guides, thick high-abrasion-resistant material, ramp angles, hydraulic track adjustment	
Track Size	U7 Extreme Duty (EXD)
Track Chain	215.9 mm (8.5 in.)
Number of Track Links (per side)	47
Lower Rollers (per side)	9
Carrier Slides / Rollers (per side)	2
Travel Performance	
Travel Speed, Forward and Reverse	
High	4.75 km/h (3.0 mph)
Low	2.2 km/h (1.4 mph)
Tractive Effort	321 kN (72,140 lbf)
Rotating Upper	
Swing System, Standard	
Swing Speed (maximum)	4.8 rpm
Swing Torque	110 174 Nm (81,260 lb.-ft.)
Swing Brake	Sealed wet multi-disc, manually applied/released
Serviceability	
Fuel Tank	1080 L (285 gal.)
Diesel Exhaust Fluid (DEF) Tank	42 L (11 gal.)
Ground Pressure (SAE J1309)	
Includes standard equipment, 11.0-m (36 ft. 1 in.) boom with heel, half-full fuel tank, and all fluids, less attachment	
Undercarriage	U7 EXD
Counterweight	Large
914-mm (36 in.) Triple-Grouser Track Shoes	47.6 kPa (6.9 psi)
Operating Weight	
Includes standard equipment, flat skylight, half-full fuel tank, and all fluids, less attachment	
Track Shoes	914-mm (36 in.) triple-grouser tracks
Undercarriage	U7 EXD
Counterweight	Large
Boom	11.0-m (36 ft. 1 in.) heel
Approximate Weight — Base Machine	37 190 kg (82,000 lb.)

While general information, pictures, and descriptions are provided, some illustrations and text may include product options and accessories NOT AVAILABLE in all regions, and in some countries products and accessories may require modifications or additions to ensure compliance with the local regulations of those countries.

Boom Performance		953ML
11.0-m (36 ft. 1 in.) Boom (6.23-m swath)		
Lift Option		<i>Standard, Including Heel</i>
Lift Capacity, Bare Pin at Full Reach		4360 kg (9,610 lb.)
Lift Capacity, Bare Pin at 9.14 m (30 ft.)		6240 kg (13,760 lb.)
Lift Capacity, Bare Pin at 7.62 m (25 ft.)		7750 kg (17,090 lb.)
Lift Capacity, Bare Pin at 6.10 m (20 ft.)		9850 kg (21,720 lb.)
Machine Dimensions		
Standard Undercarriage		U7 EXD
A Overall Height (standard configurations)	With 11.0-m (36 ft. 1 in.) heel shovel-logger boom	
Top of Cab With Flat Skylight		3.55 m (11 ft. 8 in.)
Top of Cab With Peaked Skylight		3.77 m (12 ft. 4 in.)
Top of Boom, Extended, Attachment Vertical		4.37 m (14 ft. 4 in.)
B Overall Track Length		4.90 m (16 ft. 1 in.)
C Track Length (idler to sprocket center)		3.83 m (12 ft. 7 in.)
D Tail Swing (from swing center)		3.18 m (10 ft. 5 in.)
E Boom Reach (to attachment pin)	11.0-m (36 ft. 1 in.) Boom With Heel	
Maximum		11.00 m (36 ft. 1 in.)
Minimum		5.10 m (16 ft. 9 in.)
Cutting Swath		5.90 m (19 ft. 4 in.)
F Ground Clearance, Triple Grouser		738 mm (29 in.)
G Upperstructure Width		
Without Optional Walkway		3.05 m (10 ft. 0 in.)
With Optional Walkway		3.20 m (10 ft. 6 in.)
H Track Gauge		2.69 m (8 ft. 10 in.)
I Width Over Tracks With 914-mm (36 in.) Track Shoes		3.61 m (11 ft. 10 in.)



953ML Shovel Logger





MSL953U (22-05)

Contact us to learn more.

[JohnDeere.com/ShovelLogger](https://www.johndeere.com/ShovelLogger)



JOHN DEERE