

FILTER OVERVIEW WITH SERVICE INTERVALS AND CAPACITIES

4730/4830 Self-Propelled Sprayers

CAB

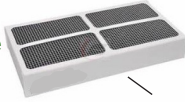
AIR FILTER ACTIVATED CARBON - [RE199681](#)

Replace after every 500 engine hours or annually.

CAB

AIR FILTER RECIRCULATION ACTIVATED CARBON - [RE199682](#)

DO NOT clean filter. Replace filter at service interval or when performance indicates.



ON BOARD AIR (OBA)

AIR DRYER CARTRIDGE - [AN204967](#)

Replace annually.



HYDRAULICS

OIL FILTER - [AN203010](#)

Replace after every 500 engine hours.

(Click here for [capacity](#))



HYDROSTATIC DRIVE

OIL FILTER - [AN203010](#)

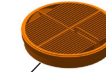
Replace after every 500 engine hours.

(Click here for [capacity](#))

ENGINE

PRIMARY AIR FILTER - [RE196945](#)

Replace as required, or if air filter indicator remains ON.



ENGINE

SECONDARY AIR FILTER - [RE181915](#)

Replace every secondary Filter with every second Primary Air Filter change.



WATER SEPARATOR

FILTER ELEMENT - [RE541922](#)

Replace annually or as required.

ENGINE

OIL FILTER - [RE504836](#)

Initial Oil Filter change is at 100 engine hours; then every 250 engine hours thereafter. Refer to the OM for special note regarding extended drain intervals.

If PLUS-50™ II engine oil and a John Deere™ filter are used, the oil and filter service interval may be extended 50% up to 500 hours.

(Click here for [capacity](#))

ENGINE

FUEL FILTER ELEMENT - [RE522878](#)

Replace after every 500 engine hours.



JOHN DEERE

Genuine Parts and Service

CAPACITIES

4730/4830 Self-Propelled Sprayers

CAPACITIES (Approximate):

Fuel Tank:

..... 503 L (133 gal)

Cooling System with Heater:

Cool-Gard™ II

..... 29.4 L (7.7 gal)

Crankcase including Filter:

Plus-50™ II

..... 26 L (6.9 gal)

Hydraulic Reservoir:

Torq-Gard™ Supreme

..... 64 L (17 gal)

Hydraulic System:

Torq-Gard™ Supreme

..... 163 L (43 gal)

Final Drives (Front Hubs) Each:

GL-5

..... 1.2 L (0.32 gal)

Final Drives (Rear Hubs) Each:

GL-5

4730..... 1.2 L (0.32 gal)

4830..... 2 L (0.53 gal)

[Return to Filter Overview](#)

