



# JOHN DEERE

## 2000 Series

Powershift Transmissions

### Funk™ Drivetrain Specifications



#### Ratings

Net input power (max) ..... 168 kW (225 hp)  
 Input no load speed (max) ..... 3000 rpm  
 Converter stall torque (max) ..... 1627 Nm (1200 lb-ft)

#### General data

##### Rotation

Input ..... Counterclockwise  
 Output (forward gears)  
   Counterclockwise ..... 473.2 mm (18.63 in) drop  
   Clockwise ..... 244.6 mm (9.63 in) drop

##### Weight

244.6 mm (9.6 in) drop ..... 337 kg (742 lb)  
 473.2 mm (18.6 in) drop ..... 408 kg (900 lb)

Mounting ..... Engine, midship, or remote

#### Controls

Electrical or mechanical

#### Options

- Ground speed rpm
- Engine-side disconnect
- Integral no-spin differential
- Disc parking brake
- HMD or converter input

#### Pump drives

	Left side	Right side
Rotation (viewing drive page)	Counterclockwise	Counterclockwise
Ratio		
(engine speed to pump speed)	1:1	1.15:1
Mounting and spline size	SAE A, B, or C	SAE A, B, or C
Disconnect available for mounting size	SAE C	SAE C and B
Power (max intermittent)	168 kW (225 hp)	168 kW (225 hp)

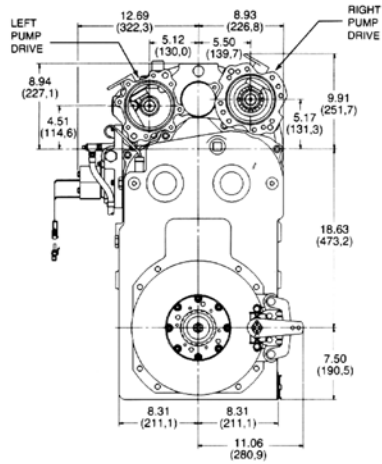
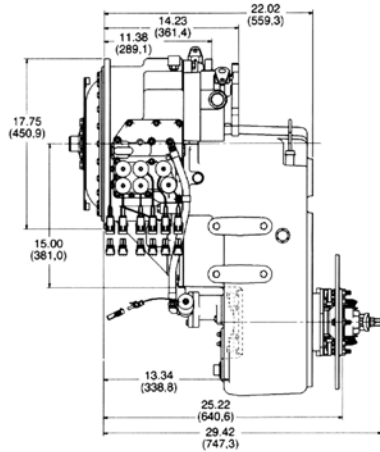
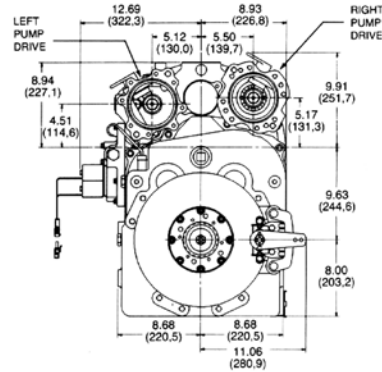
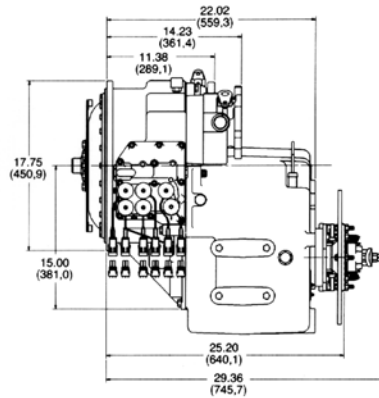
#### Gear ratio ranges

Drop	Version	Forward						Reverse		
		1st	2nd	3rd	4th	5th	6th	1st	2nd	3rd
244.6 (9.63)	3/3	3.68	2.50	1.00	-	-	-	3.68	2.50	1.00
	3/3	5.80	2.50	1.00	-	-	5.80	2.50	1.00	-
	4/3	6.50	4.42	1.77	1.00	-	-	6.50	4.42	1.77
	4/3	10.25	4.42	1.77	1.00	-	-	6.50	4.42	1.77
	6/3	6.50	4.42	3.68	2.50	1.77	1.00	6.50	4.42	1.77
	6/3	8.77	5.80	3.78	2.50	1.51	1.00	10.25	4.42	1.77
	6/3	10.25	5.80	4.42	2.50	1.77	1.00	10.25	4.42	1.77
473.2 (18.63)	3/3	2.94	2.00	0.80	-	-	-	2.94	2.00	0.80
	3/3	4.64	2.00	0.80	-	-	-	4.64	2.00	0.80
	4/3	5.20	2.94	1.41	0.80	-	-	5.20	3.53	1.41
	4/3	8.20	3.53	1.41	0.80	-	-	8.20	3.53	1.41
	6/3	5.20	3.53	2.94	2.00	1.41	0.80	5.20	3.53	1.41
	6/3	7.01	4.64	3.02	2.00	1.21	0.80	8.20	3.53	1.41
	6/3	8.20	4.64	3.53	2.00	1.41	0.80	8.20	3.53	1.41

Specifications and design subject to change without notice. Ratings may vary depending on application and service. Application and installation are subject to review by John Deere.

Photograph may show non-standard equipment.

### Dimensions



### Features and benefits

#### Flexible drive types

The 2000 Series has the input drive options demanded by most industrial applications. Torque converter or HMD are available, giving you the flexibility to design your machine to fit your needs.

#### No-spin differential

This output shaft option is a must for 4WD towing vehicles that operate on high-traction surfaces. Eliminate unnecessary tire wear with the only limited-slip differential in the industry.

#### Electric control valves

This type of transmission shift control is your best option for vehicles used in remote locations. Electronic control offers flexibility and the easy serviceability of mechanical control.

#### Mountings

##### Engine

SAE #3 standard (SAE #2 optional) dry converter housing with flex plate converter drive. Side-mounting pads are recommended for engine/transmission cradle-mounting.

##### Midship

Side-mounting pads and input bill (engine-mounted torsional damper required).

##### Remote

Two side-mounting pads (engine-mounted torque converter PTO with charge pump required).

##### Clutches

Fully modulated, oil-cooled, multidisc, and hydraulic-actuated.



# JOHN DEERE

John Deere Power Systems  
3801 W. Ridgeway Ave.  
P.O. Box 5100  
Waterloo, IA 50704-5100  
Phone: +1 800 553 6446  
Fax: +1 319 292 5075  
E-mail: [jdpower@JohnDeere.com](mailto:jdpower@JohnDeere.com)  
[www.JohnDeere.com/jdpower](http://www.JohnDeere.com/jdpower)

John Deere Power Systems  
Doornelei, 24  
2018 Antwerpen  
Belgium  
Phone: +32 3 238 89 69  
Fax: +32 3 248 54 98