



# JOHN DEERE

## 23000 HMD Transmission

3- and 4-speed – Single Output  
In-line Transmission

### Funk™ Drivetrain Specifications

#### Ratings

Input power (max) ..... 75 kW (100 hp)  
Input torque (max) ..... 271 Nm (200 lb-ft)  
Input no load speed (max) ..... 3000 rpm

#### General data

**Motor adapters** ..... SAE C and D

#### Approximate dry weight

3-speed ..... 69 kg (151 lb)  
4-speed ..... 72 kg (159 lb)

#### Oil

Capacity ..... 3.3 L (3 qt)  
Type ..... MIL-L-2105-C or API classification GL-5

#### Gear ratio (spur-type gears)

Model	Low	2nd	3rd	High
23155	6.63:1	3.17:1	1.72:1	1:1
23125	6.63:1	2.54:1	–	1:1
23126	6.63:1	3.17:1	–	1:1

#### Splines

Input ..... SAE 14-tooth 12/24 DP  
SAE 13-tooth 8/16 DP

**Parking brake** ..... Band-type

**Output fittings** ..... Spicer 3-1-2181

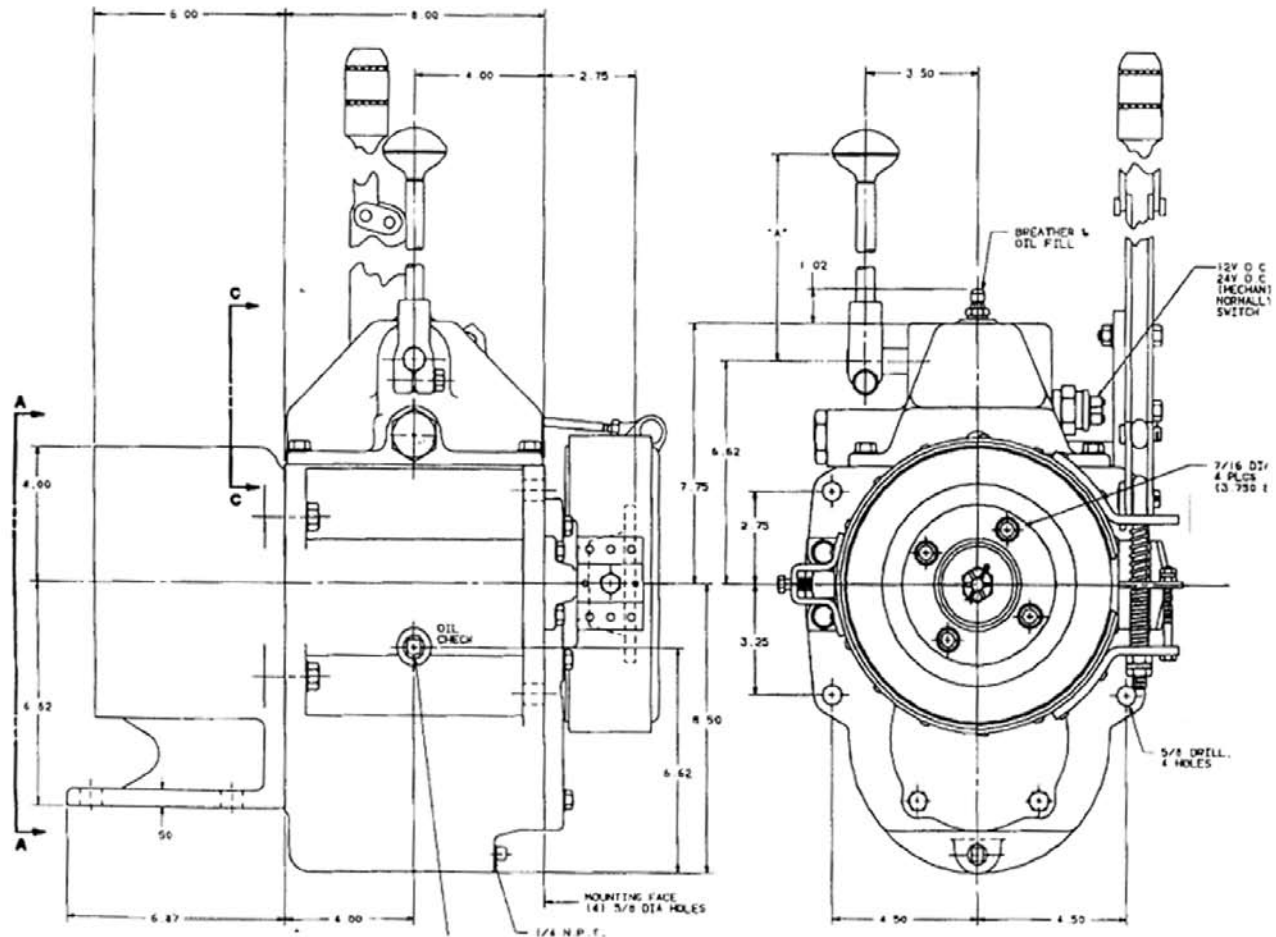
#### Applications

Dozing machines, motor graders, railway vehicles, sweepers, pavers, and virtually any equipment requiring controlled travel speed.

# 23000 HMD Transmission 3- and 4-speed – Single Output In-line Transmission

## Funk Drivetrain Specifications

### Dimensions



### Features and benefits

#### Controlled ground speed at full engine power

- Available to use with applications up to 75 kW (100 hp)
- 3000 rpm max input, no load speed

#### Multiple gear ratios in three-speed versions

- Covers low-speed working range through high-gear travel speeds
- Wide speed variance in each gear range

#### Selection of SAE hydraulic input motor mountings

- SAE C and D mounts to utilize input hydraulics to best fit the application



**JOHN DEERE**

John Deere Power Systems  
3801 W. Ridgeway Ave.  
P.O. Box 5100  
Waterloo, IA 50704-5100  
Phone: +1 800 553 6446  
Fax: +1 319 292 5075  
E-mail: [jdpower@JohnDeere.com](mailto:jdpower@JohnDeere.com)  
[www.JohnDeere.com/jdpower](http://www.JohnDeere.com/jdpower)

John Deere Power Systems  
Doornelei, 24  
2018 Antwerpen  
Belgium  
Phone: +32 3 238 89 69  
Fax: +32 3 248 54 98