



JOHN DEERE

12700 HMD Transmission

4-speed — Single Output
In-Line Transmission

Funk™ Drivetrain Specifications

Ratings

Input power (max) 104 kW (140 hp)
Input torque (max) 407 Nm (300 lb-ft)
Input no load speed (max) 2500 rpm

General data

Motor adapters SAE C and D

Approximate dry weight 88 kg (194 lb)

Oil

Capacity 4.4 L (4 qt)

Type MIL-L-2105-C or API classification GL-5

Gear ratio (spur-type gears, sliding collar shift)

Low	2nd	3rd	High
6.27:1	3.12:1	1.75:1	1:1

Splines

Input SAE 14-tooth 12/24 DP
SAE 13-tooth 8/16 DP

Parking brake Drum-type

Output fittings Adapts to Spicer series 1500 and 1600
Mechanics 7C U-joint flange yoke

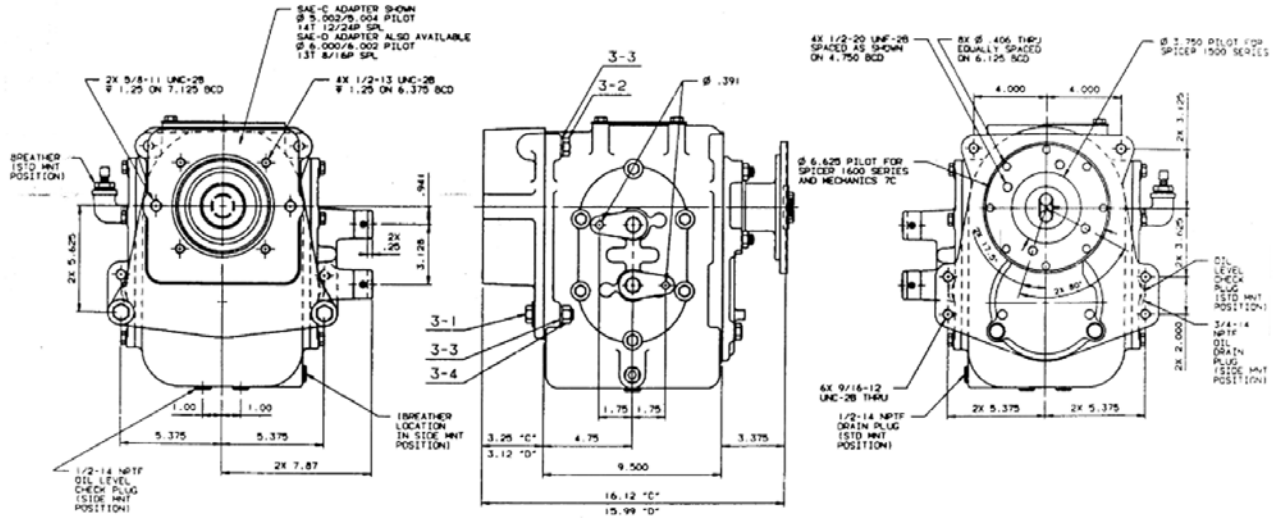
Applications

Dozing machines, motor graders, railway vehicles, sweepers, pavers, and virtually any equipment requiring controlled travel speed.

12700 HMD Transmission 4-speed – Single Output In-line Transmission

Funk Drivetrain Specifications

Dimensions



Features and benefits

Controlled ground speed at full engine power

- Available to use with applications up to 104 kW (140 hp)
- 2500 rpm max input, no load speed

Multiple gear ratios in four-speed versions

- Covers low-speed working range through high-gear travel speeds
- Wide speed variance in each gear range

Selection of SAE hydraulic input motor mountings

- SAE C and D mounts to utilize input hydraulics to best fit the application



JOHN DEERE

John Deere Power Systems
3801 W. Ridgeway Ave.
P.O. Box 5100
Waterloo, IA 50704-5100
Phone: +1 800 553 6446
Fax: +1 319 292 5075
E-mail: jdpower@JohnDeere.com
www.JohnDeere.com/jdpower

John Deere Power Systems
Doornelei, 24
2018 Antwerpen
Belgium
Phone: +32 3 238 89 69
Fax: +32 3 248 54 98