

**762B  
SCRAPER  
(SERIAL NO. 791764- )**



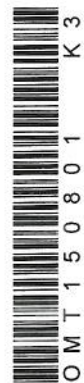
**JOHN DEERE**

**OPERATORS MANUAL  
762B SCRAPER  
(SERIAL NO. 791764- )**

OMT150801 K3 English

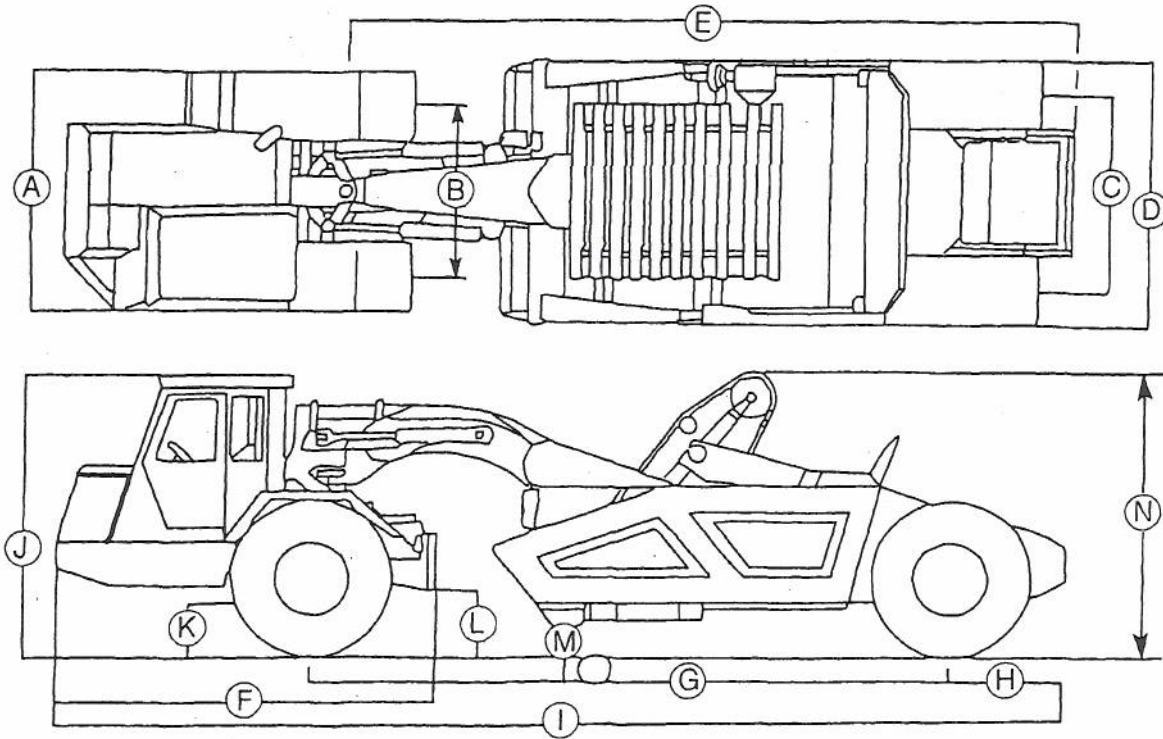
**JOHN DEERE DUBUQUE WORKS  
OMT150801 K3**

LITHO IN THE U.S.A.  
ENGLISH



# Specifications

762B



-UN-22NOV93  
TB130AA

Key	Bowl At Ground Level		Bowl Up		Bowl Level	
A	2.44 m	(8 ft)	2.44 m	(8 ft)	2.44 m	(8 ft)
B	1.82 m	(5 ft 11.7 in.)	1.82 m	(5 ft 11.7 in.)	1.82 m	(5 ft 11.7 in.)
C	1.82 m	(5 ft 11.7 in.)	1.82 m	(5 ft 11.7 in.)	1.82 m	(5 ft 11.7 in.)
D	2.44 m	(8 ft)	2.44 m	(8 ft)	2.44 m	(8 ft)
E					7.37 m	(24 ft 2 in.)
F	3.97 m	(13 ft)	4.00 m	(13 ft 1.5 in.)	3.98 m	(13 ft 0.5 in.)
G	6.42 m	(21 ft 1.0 in.)	6.21 m	(20 ft 4.5 in.)	6.25 m	(20 ft 6 in.)
H	1.28 m	(4 ft 2.5 in.)	1.35 m	(4 ft 5 in.)	1.35 m	(4 ft 5 in.)
I	10.24 m	(33 ft 7 in.)	10.06 m	(33 ft)	10.14 m	(33 ft 3 in.)
J	3.11 m	(10 ft 2.5 in.)	2.99 m	(9 ft 10 in.)	3.04 m	(9 ft 11.5 in.)
K: Axle clearance	470 mm	(18.5 in.)	470 mm	(18.5 in.)	470 mm	(18.5 in.)
L: Transmission clearance	440 mm	(17.3 in.)	570 mm	(22.4 in.)	488 mm	(19.2 in.)
M: End Sections			502 mm	(19.75 in.)	325 mm	(12.80 in.)
Center Section			474 mm	(18.7 in.)	295 mm	(11.6 in.)
Teeth Bottom			417 mm	(16.4 in.)	226 mm	(8.9 in.)
Cut Below Ground Level						
Without Teeth	180 mm	(7.1 in.)				
With Teeth	262 mm	(10.3 in.)				
N	2.58 m	(8 ft 5.5 in.)	2.82 m	(9 ft 3 in.)	2.68 m	(8 ft 9.5 in.)

TX,115,FF3558 -19-23NOV93

Specifications

**762B**

*NOTE: Specifications and design subject to change without notice. Wherever applicable, specifications are in accordance with SAE Standards. Except where otherwise noted, these specifications are based on a unit equipped with 23.5—25, 16 PR tires, ROPS canopy, full fuel tank, 80 kg (175 lb) operator and standard equipment.*

**Engine: John Deere 6466A**

Type	turbocharged and aftercooled diesel
Bore and stroke	116 x 121 mm (4.56 x 4.75 in.)
No. of cylinders	6
Displacement	7.638 L (466 cu. in.)
Compression ratio	14.9 to 1
Lubrication	Pressure system w/full-flow filter
Aspirated air cleaner with restriction indicator	Dry
Cooling fan	Suction type
Electrical system	24-volt w/50-amp alternator
Batteries (two 12-volt)	Reserve capacity: 160 minutes
SAE net horsepower at 2100 rpm	134 kW (180 hp)
Maximum net torque at 1400 rpm	793 N·m (585 lb-ft)

**Torque Converter:**

Two-phase single-stage with 2.3 to 1 multiplication ratio, free-wheeling stator, and lock-up clutch. Lock-up is operator controlled with direct-acting shift system, or automatic with optional automatic transmission control.

**Transmission:**

John Deere planetary powershift with torque converter: 6 speeds forward, 1 reverse

**Shift control options:**

Direct-acting (manual)	Shift lever activates 24-volt solenoids
Fully automatic	Microprocessor actuates 12-volt solenoids
Lubrication and shift-element actuation	1.5 L/s (24 gpm) gear pump

TX,115,FF1534 -19-16NOV93

*Specifications*

**762B**

**Travel Speeds: (Maximum at 2100 engine rpm)**

Direction	Gear	km/ h	mph
Forward	1 . . .	4.3 . . .	2.7
	2 . . .	6.2 . . .	3.8
	3 . . .	7.9 . . .	4.9
	4 . . .	11.2 . . .	7.0
	5 . . .	22.4 . . .	13.9
	6 . . .	40.9 . . .	25.4
Reverse	1 . . .	7.3 . . .	4.5

**Differential Lock:**

Foot operated, electro/hydraulic

**Drive Axle (Differential type with inboard planetaries):**

Lubrication and differential lock actuation . . . . . 0.3 L/s (4.7 gpm) gear pump

**Power Steering (Position-responsive type):**

Articulated frame hydraulically actuated by dual cylinders  
 Turning circle (180° turn) . . . . . 9.14 m (30 ft)  
 Frame articulation (total) . . . . . 180°

**Brakes (Hydraulic power actuated. Hydraulic accumulator provides dead engine-braking):**

Front . . . . . Adjustment-free inboard wet-disk  
 Rear . . . . . Self-adjusting wheel-mounted expanding-shoe  
 Parking . . . . . Spring applied, hydraulically released disc type

**Hydraulic System:**

Main machine: Closed-center system with 65 cm<sup>3</sup> (4.0 in.<sup>3</sup>) variable-displacement, constant pressure pump for steering, brakes, and all scraper functions except elevator drive.  
 System pressure . . . . . 16 203 kPa (162 bar) (2350 psi)  
 Main pump rating . . . . . 2.18 L/s (34.6 gpm) at 2100 engine rpm  
 Charge pump rating . . . . . 0.82 L/s (13 gpm) at 2100 engine rpm

Elevator drive: Hydrostatic system with 69.8 cm<sup>3</sup> (4.26 in.<sup>3</sup>) variable-displacement, axial piston pump, and 51.6 cm<sup>3</sup> (3.15 in.<sup>3</sup>) axial piston motor.  
 System pressure . . . . . 34 475 kPa (345 bar) (5000 psi)  
 Pump rating . . . . . 2.31 L/s (36.6 gpm) at 2100 engine rpm

**Filtration (All systems are protected by replaceable filters):**

Main hydraulic system . . . . . 10 micron  
 Elevator system . . . . . 10 micron  
 Transmission . . . . . 10 micron  
 Engine . . . . . 25 micron  
 Drive axle . . . . . 10 micron

*Specifications*

**762B**

**Elevator:**

Number of flights .....	18
Spacing of flights .....	316 mm (12.44 in.)
Width of flights .....	1.7 m (5 ft. 6.9 in.)
Speed variable .....	15-73 m/min (0—236 fpm)(with 4 detented positions)
Length (top to bottom) .....	2.9 m (9 ft 6 in.)

**Cutting Edge:**

2.29 m (7 ft 6 in.) wide; 3 sections, reversible and replaceable, high-carbon steel. Each

section is adjustable vertically 51 mm (2 in.).

Center section .....	19 x 254 x 1372 mm (0.75 x 10 x 54.in.)
End sections .....	19 x 254 x 457 mm (0.75 x 10 x 18 in.)

Weight Distribution	Kg	Lb
<b>Empty</b>		
Drive axle .....	10 815	23 847
Bowl axle .....	5 280	11 642
Total .....	16 095	35 489
<b>Loaded</b>		
Drive axle .....	15 260	33 648
Bowl axle .....	14 010	30 892
Total .....	29 270	64 539

**Drain and Refill Capacities:**

	Metric	U.S.
Cooling system .....	34 L	9 gal
Fuel tank .....	246 L	65 gal
Engine oil with filter change .....	23.7 L	6.25 gal
Transmission oil with filter change .....	49 L	13 gal
Drive axle oil with filter change .....	31.2 L	8.25 gal
Hydraulic oil with hydraulic and elevator filters change .....	45.4 L	12 gal
Elevator gearbox oil .....	12.6 L	3.3 gal

TX,115,FF3612 -19-16NOV93