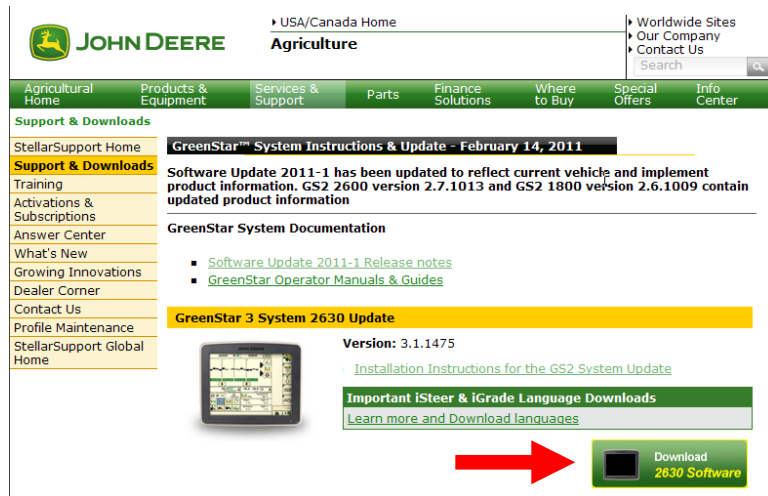
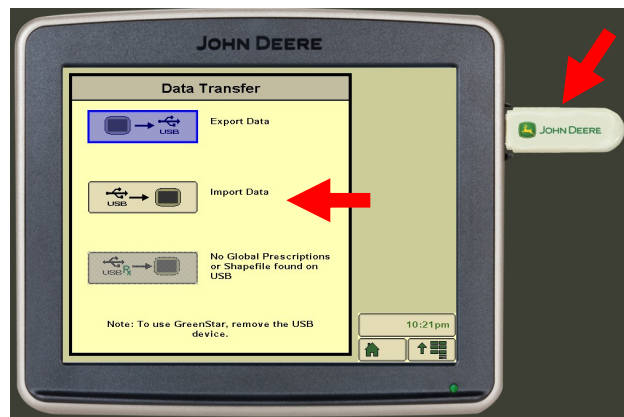


Successful field documentation starts with the proper setup of your GreenStar™ display. Prior to the planting season it is highly recommended to review the following items.

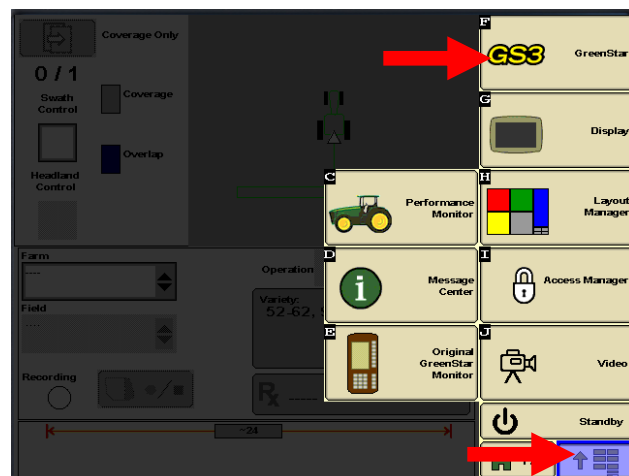
1. Update your GreenStar™ display to the latest software version. Updates are available at stellarsupport.deere.com. Please contact your local John Deere dealer if you need assistance with this process.



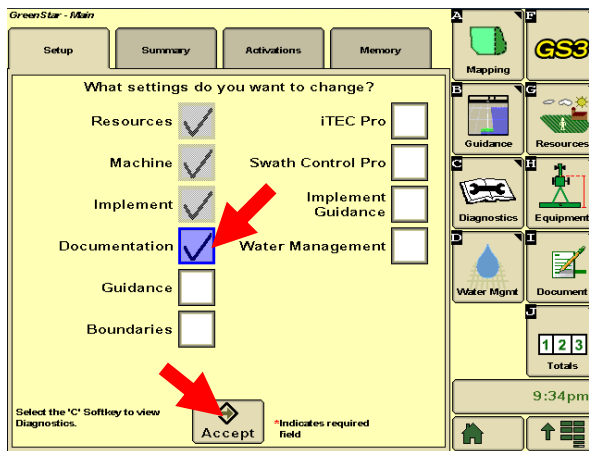
2. Insert your USB flash drive loaded with your APEX® data as shown. Select the Import Data button. On the next screen select the correct Import Profile Name then select Begin Transfer. Once the transfer is complete you are go. Remove the USB drive before you proceed.



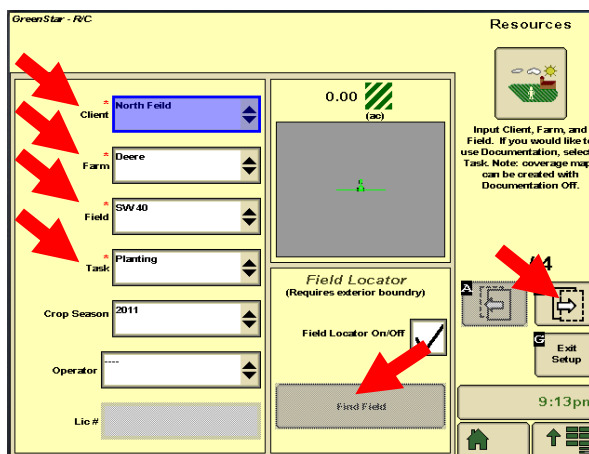
3. Select the Menu button. Select the GS3 GreenStar button.



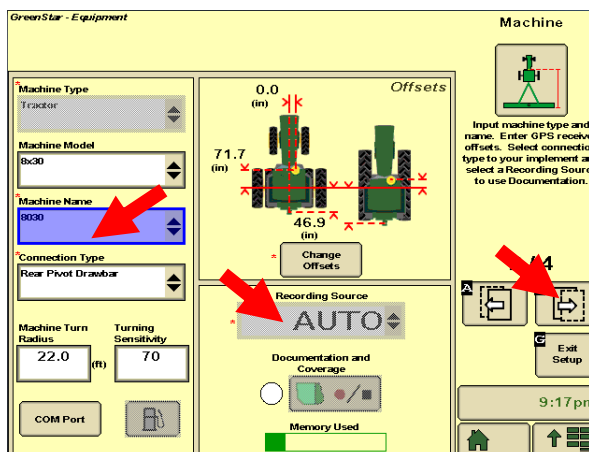
4. Select Documentation and then click on the Accept button.



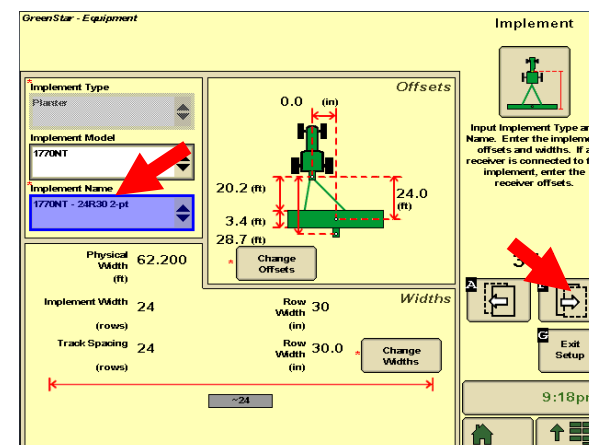
5. If you have field boundaries loaded click on Find Field. If not manually select your Client, Farm, and Field. Select Planting from the Task list. Click the page button.



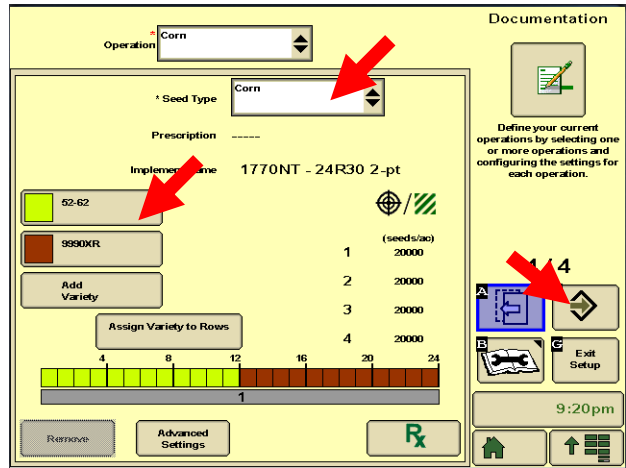
6. Select your Machine Name. Make sure the offsets loaded into APEX® are accurately listed on the screen. If not correct any errors. **If your 2630 monitor is not your planter monitor select a Recording Source. JDIC recommends adding an implement switch to your planter to accurately document your planted acres in these configurations.** Click the page button.



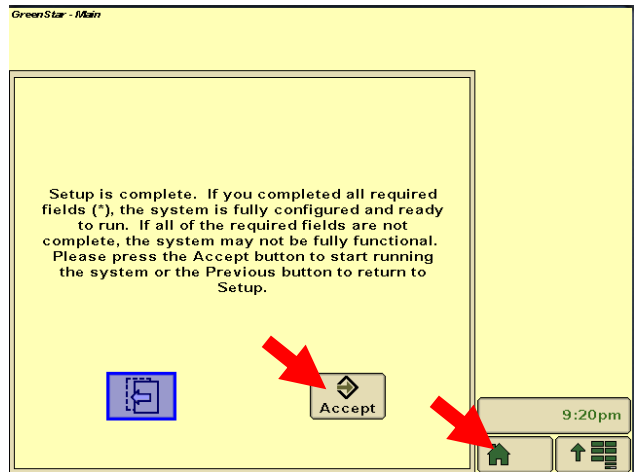
7. Select your Implement Name. Make sure the offsets and implement width loaded into APEX® are accurately listed on the screen. If not correct any errors. Click the page button.



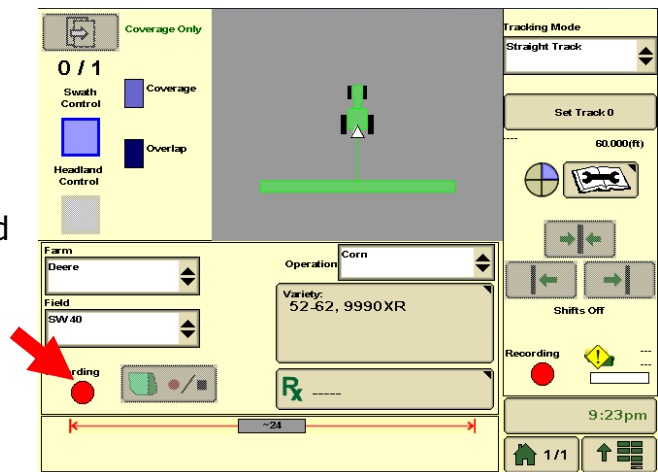
7. Select Seed Type and add the variety(ies) you will be planting in the field. Click on the Accept button.



8. Click on the Accept button and the Home page button and you are ready to plant.



9. When your planter is on the ground the Recording circle needs to be Red for it to be recording properly.



10. Complete steps 3 through 8 every time you change a field or crop/variety.