

Operations Center Update - May 2024



John Deere Operations Center™ provides simple but powerful management tools for your equipment and crop data, anytime, anywhere through the web and mobile device. Get started with [Operations Center](#) today.

Summary:

- **Automatic Work Plan Activation**
- **Path Planning AutoPath™ from Boundaries in Land**
- **Work Analyzer: Post Calibration and Area Edits Across Multiple Fields at One Time**
- **Field Analyzer: Number of Round Bales & Individual Round Bale Metrics**
- **Work Analyzer: Number of Round Bales & Individual Round Bale Metrics**
- **Maintenance Plan Auto Assignment & Plan Tracking in Equipment Mobile**

Detailed Release Notes:

Automatic Work Plan Activation

More confidence that field work is done right.

Be more confident that field work is documented and completed correctly when you select “Automatic Work Plan Activation” on your Gen 4 and G5 displays.

With the latest display software, the operator no longer needs to click “OK” to accept a work plan. Operators pull into a field and can immediately start working. The display will be set up automatically based on the information entered in the work plan.

How to turn it on

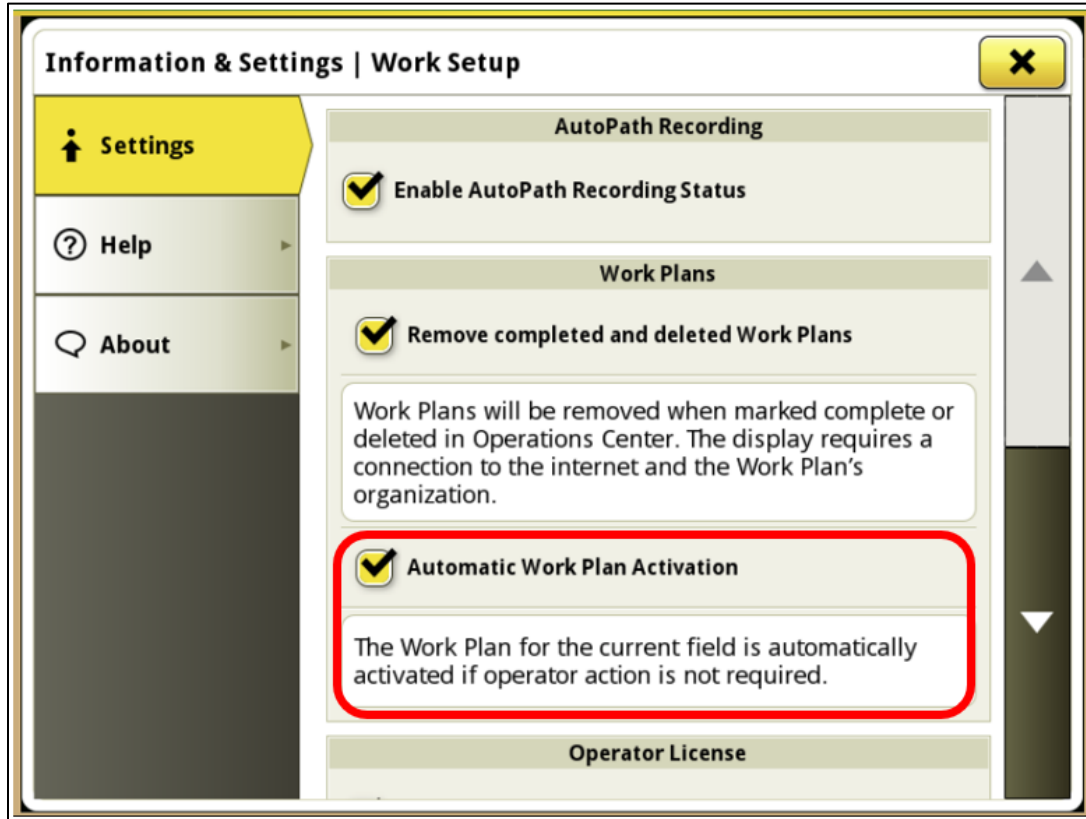
You can take automation to the next level by enabling Automatic Work Plan Activation on your Gen 4 and G5 displays under Work Setup, Settings. Operators simply enter the field with the equipment and the work plan will begin, if the following conditions are met:

- Seed variety, product (fertilizers, chemicals) in the work plan matches those already set for those items in Work Setup on the display.
- Operator in the work plan matches the operator in Work Setup on the Display, or no operator selected.
- An implement profile is properly set up on the display when using an implement that has no technology; for example, implements without ISOBUS or controllers.

For example, if the operator’s input is needed because there are two products assigned to work plan, the known notification will appear and guide through the setup.

To send work plans wirelessly from Operations Center to your displays, JDLink™ modems and

connection are required.



Enable Automatic Work Plan activation on your Gen 4 and G5 displays

Helpful Information

Go to [Stellar Support™](#) to download the latest display software and unlock the full potential of Work Planner on your Gen 4 and G5 displays.

Learn how to use [Work Planner](#) and wirelessly send work plans to your Gen 4 and G5 displays so your operators know exactly what to do and where to do it.

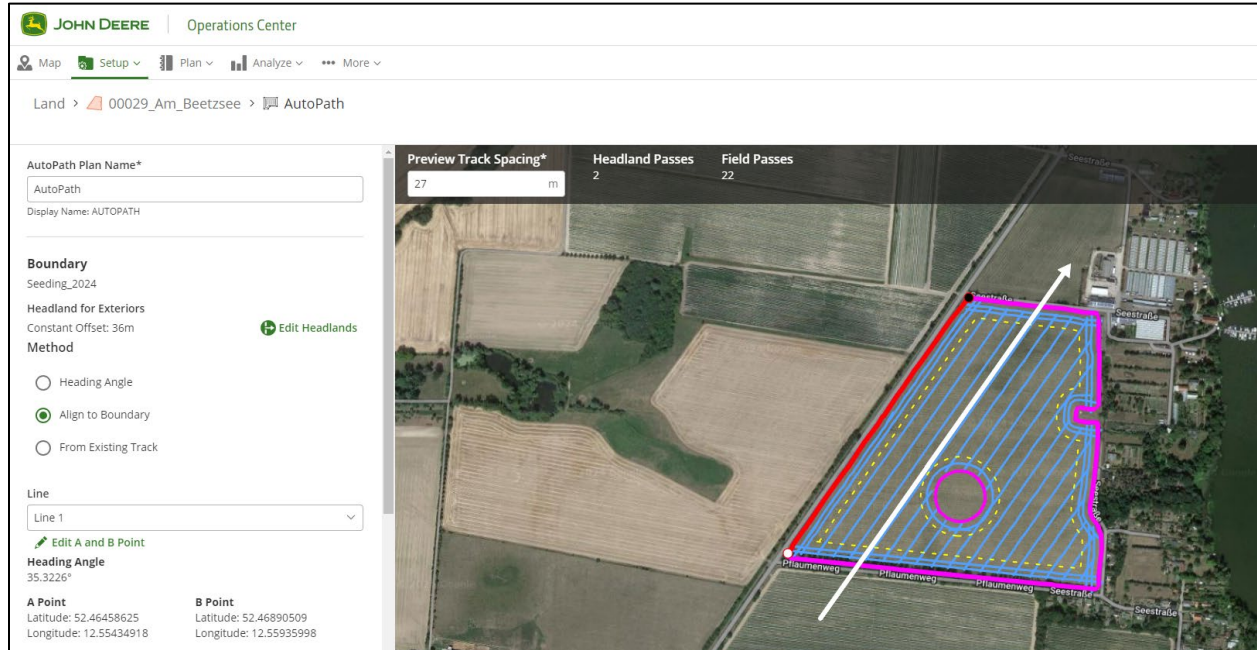
Please refer to the following online [Help Documentation](#) for additional details.

Path Planning AutoPath™ from Boundaries in Land

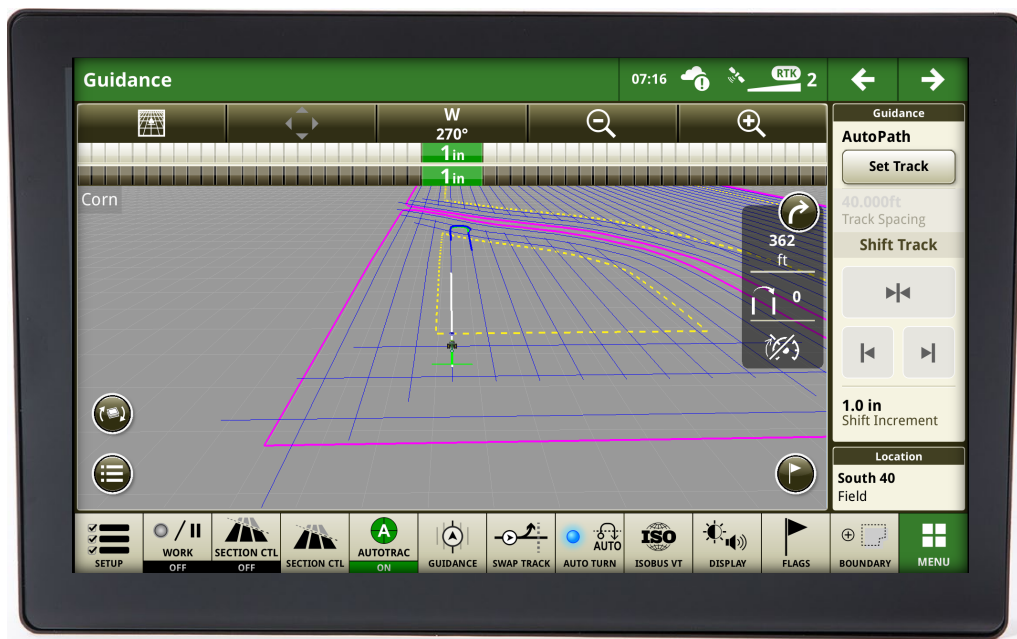
Plan your AutoPath track sets in Land to prepare your fieldwork.

- Add a new track to a field and select AutoPath from boundary.
- Define the working width of your implement.
- Select the boundary to align the guidance lines.
- The Land tool prepopulates the complete guidance plan of your field including the headlands.

The guidance lines can be created according to an existing boundary, upon a specific heading angle or using an existing guidance line as a reference.



AutoPath from boundaries in Land



AutoPath from boundaries on the G5 Display

Send your AutoPath track set to Gen4/G5 Displays via the Setupfile creator tool. Update your display to SU 24-1 as this is a requirement for AutoPath from boundaries. Please visit [Stellar Support](#) to get the latest software version for your Gen 4/G5 display.

For more information, please visit [John Deere Help Documentation](#).

Work Analyzer: Post Calibration and Area Edits Across Multiple Fields at One Time

- Reduce time spent cleaning up inaccurate data
- Post calibrate and/or edit area worked for multiple work records at a single time

What's new:

- Edit button in top right corner of Work Analyzer

For more information, please visit [Help Documentation](#).

The screenshot displays the John Deere Work Analyzer interface. At the top, there's a navigation bar with 'Map', 'Setup', 'Plan', 'Analyze', and 'Sustainability' tabs. Below this, the 'Work Analyzer' section is active, showing a table of harvest data for 2023. The table includes columns for Fields, Crop Type, Area Harvested, Moisture, Dry Yield, Total Dry Yield, Wet Weight, Total Wet Weight, Speed, Last Harvested, Equipment, Varieties, and Operators. An 'Edit' button is highlighted in the top right corner of the table area. Below the table, there's a summary row for 'Totals/Averages'.

Fields	Crop Type	Area Harvested	Moisture	Dry Yield	Total Dry Yield	Wet Weight	Total Wet Weight	Speed	Last Harvested	Equipment	Varieties	Work	Operators
2 Wheelines Ken MacPine	Barley	76.4 ac	10.9 %	66 bu/ac	5,026 bu	3,157.1 lb/ac	241,224 lb	4.5 mi/hr	Aug 2, 2023	2	Bill Coors ...	Harvest B...	Beau
3 Tower Pivot Ken Home Farm	Barley	37 ac	10.9 %	81 bu/ac	3,054 bu	3,898.2 lb/ac	144,185 lb	4.3 mi/hr	Aug 14, 2023	2	Bill Coors ...	Harvest B...	2
23 Flood Ken MacPine	Barley	27.9 ac	8.9 %	59 bu/ac	1,640 bu	2,815.7 lb/ac	78,696 lb	5.3 mi/hr	Aug 20, 2023	1HX91DX...	2	Harvest B...	Pat
60 S of Adamsons Ken MacPine	Barley	48.8 ac	11.8 %	80 bu/ac	3,906 bu	3,845.8 lb/ac	187,629 lb	4.1 mi/hr	Aug 1, 2023	2	2	Harvest B...	Beau
90 Acres E of 400 Ken Home Farm	Wheat (Hard Red Winter)	86.9 ac	8.4 %	60 bu/ac	5,201 bu	3,601.1 lb/ac	313,038 lb	3.2 mi/hr	Aug 3, 2023	1HX91DX...	2	Harvest W...	2
106 On Nipple Rd Ken MacPine	Barley	95.3 ac	11.1 %	86 bu/ac	8,160 bu	4,109.7 lb/ac	391,655 lb	3.7 mi/hr	Aug 2, 2023	2	Moravian ...	Harvest B...	Beau
160 S of Hwy Ken Home Farm	Barley	134.1 ac	10.2 %	72 bu/ac	9,704 bu	3,473 lb/ac	465,733 lb	4.2 mi/hr	Aug 17, 2023	3	Eagle	Harvest B...	3
160 West Pivot Ken John Widhalm	Barley	145.5 ac	12.2 %	93 bu/ac	13,476 bu	4,444.2 lb/ac	646,799 lb	3.4 mi/hr	Aug 14, 2023	2	Bill Coors ...	Harvest B...	2
300 N of Dale Arms Ken Home Farm	Wheat (Hard Red Winter)	279.2 ac	10.1 %	72 bu/ac	20,004 bu	4,305.7 lb/ac	1,202,226 lb	3.4 mi/hr	Aug 3, 2023	2	2	Harvest W...	3
450 S of River Casey Bulb	Barley	451.5 ac	10.5 %	32 bu/ac	14,361 bu	1,526.6 lb/ac	689,270 lb	6.2 mi/hr	Aug 16, 2023	3	Moravian ...	Harvest B...	3
Amber 80 East Casey Home Farm	Wheat (Hard Red Spring)	64.9 ac	9.7 %	59 bu/ac	3,849 bu	3,557.1 lb/ac	230,965 lb	3.6 mi/hr	Aug 19, 2023	3	WB968	Harvest W...	3
Amber 120 West Ken John Widhalm	Barley	105.2 ac	11.7 %	103 bu/ac	10,880 bu	4,962.3 lb/ac	522,189 lb	3.3 mi/hr	Aug 14, 2023	2	Bill Coors ...	Harvest B...	2
Totals/Averages		5 Crops	9,861.8 ac	11.2 %	69 bu/ac	676,760 bu	3,658.7 lb/ac	36,060,905 lb	3.7 mi/hr	6 Machines	14 Varieties	92 Records	10 Operat

The 'Edit' button is located in the top right corner of the table area, next to the 'Share/Export' button. It is a small icon with a pencil symbol.

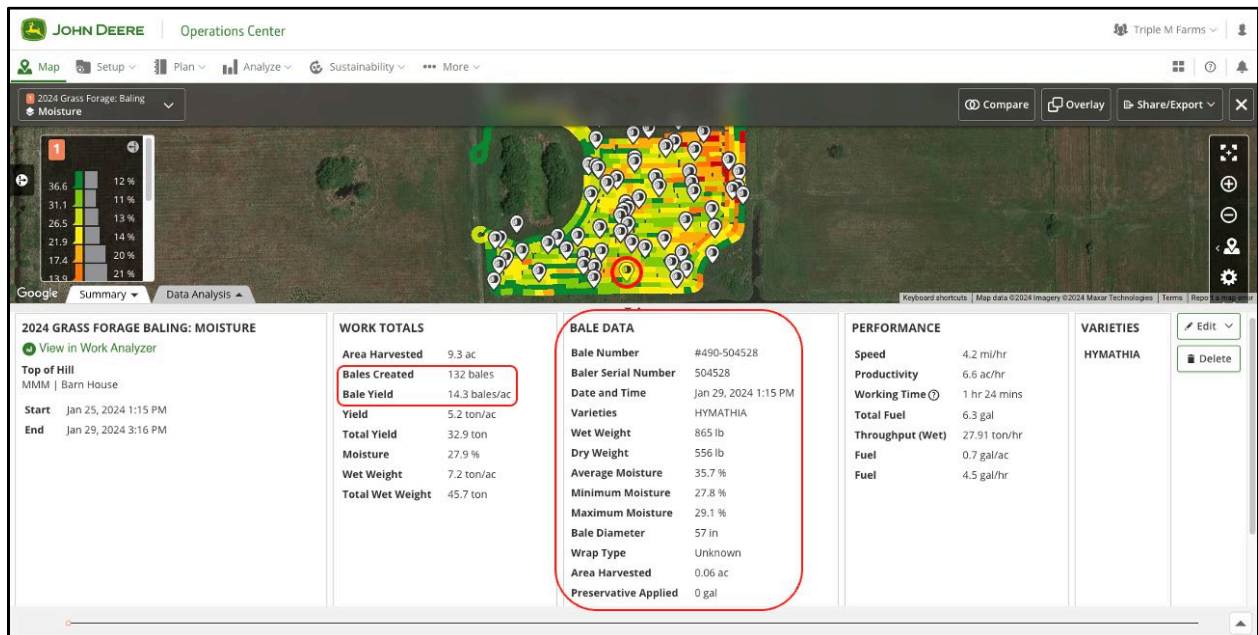
Field Analyzer: Number of Round Bales & Individual Round Bale Metrics

- Plan logistics to see how many trips it will take to remove the number of bales from the field.

- See which bales are too wet and need to be set aside and not stacked.
- Understand why certain bales may be too wet.

What's new:

- Round bale markers on the map that are selectable to give you specific details about that bale.
- Total bales for that work record and the bales/acre to give you a good idea on the yield of that field and cutting.



Work Analyzer: Number of Round Bales & Individual Round Bale Metrics

- Quickly get a count of how many bales you have produced this season to know if you will have enough to make it through winter or if you will need to buy some.
- Check season-to-season, cutting-to-cutting to see if a field's yield has dropped off and it's time to reseed.
- Compare the times from when you mowed or swathed a field to when you baled it to see how it affected the dry down time and moisture.

What's new:

- New Bales dropdown in Work Analyzer
- Total number of bales made per baling, field and season
- Yield given bales/acre
- Each bale has a unique identifier and its corresponding attributes (weight, moisture and area harvested)

JOHN DEERE | Operations Center Triple M Farms

Map Setup Plan Analyze Sustainability More

Work Analyzer Bales 2024 All Crops Share/Export Field P&L

Fields Work Equipment Bales

Search Fields 3 Clients Varieties Equipment Filters

Fields	Bales	Crop Type	Yield	Wet Weight	Moisture	Area Harvested	Date	Work	Varieties
	600	Grass	11.15 bales/ac	7,458 lb	18.5 %	53.79 ac	Feb 29, 2024	Baling Gra...	---
	318	Grass	20.27 bales/ac	304,237 lb	22.3 %	15.69 ac	Feb 2, 2024	Baling Gra...	JIGGS BER...
	30	Grass	12.66 bales/ac	---	47.4 %	2.37 ac	Mar 20, 2024	Baling Gra...	---
	385	Grass Forage	10.02 bales/ac	1,517,164 lb	19.5 %	38.42 ac	Jan 25, 2024	2	HYMATHU
	132	Grass Forage	14.35 bales/ac	85,322 lb	24.4 %	9.2 ac	Jan 29, 2024	Baling Gra...	HYMATHU
	1552	Grass	15.18 bales/ac	---	27.9 %	102.23 ac	Mar 21, 2024	2	Hermathi...
Totals/Averages	3,017 Bales	2 Crops	13.61 bales/ac	---	23.8 %	221.7 ac		8 Records	4 Varieties

JOHN DEERE | Operations Center Triple M Farms

Map Setup Plan Analyze Sustainability More

Work Analyzer < Boyer St Lott Ag | Lott Ag Map Share/Export Field P&L

Work Equipment **Bales**

Search Fields 3 Clients Varieties Equipment Filters

Bales	Crop Type	Yield	Wet Weight	Moisture	Area Harvested	Date	Work
#111-504526	Grass	12.5 bales/ac	0 lb	15.4 %	0.08 ac	Feb 1, 2024	Baling Gra...
#112-504526	Grass	10 bales/ac	944 lb	22.3 %	0.1 ac	Feb 1, 2024	Baling Gra...
#113-504526	Grass	20 bales/ac	969 lb	23.2 %	0.05 ac	Feb 1, 2024	Baling Gra...
#114-504526	Grass	20 bales/ac	1,051 lb	20.2 %	0.05 ac	Feb 1, 2024	Baling Gra...
#115-504526	Grass	20 bales/ac	1,045 lb	27.1 %	0.05 ac	Feb 1, 2024	Baling Gra...
#116-504526	Grass	16.67 bales/ac	1,028 lb	27.3 %	0.06 ac	Feb 1, 2024	Baling Gra...
#117-504526	Grass	20 bales/ac	1,067 lb	26.5 %	0.05 ac	Feb 1, 2024	Baling Gra...
#118-504526	Grass	25 bales/ac	1,059 lb	23.4 %	0.04 ac	Feb 1, 2024	Baling Gra...
#119-504526	Grass	25 bales/ac	1,113 lb	23.4 %	0.04 ac	Feb 1, 2024	Baling Gra...
Totals/Averages	1 Crop	20.27 bales/ac	304,237 lb	22.3 %	15.69 ac		1 Record

Maintenance Plan Auto Assignment & Plan Tracking in Equipment Mobile

Get ready for a game-changer in equipment maintenance. We are thrilled to announce the launch of Maintenance Plan Auto Assignment & Plan Tracking in Equipment Mobile. Starting January 2024, we introduced factory maintenance plan auto-assignment for MY17+ 1-5 Series Tractors, marking the first step in our journey to revolutionize the way you care for your John Deere equipment.

Benefits:

- Simplified maintenance plan setup
- Proactive maintenance capabilities
- Enhanced communication channels between dealers, technicians, and customers
- Optimized equipment performance
- Reduced unexpected downtime
- Increased productivity

Our mission is clear - to provide you with the best support possible. With simplified maintenance plan setup, proactive maintenance capabilities, and enhanced communication channels between dealers, technicians, and customers, this tool ensures that your John Deere equipment is always primed for action. Say goodbye to unexpected downtime and hello to increased productivity as you experience optimized equipment performance like never before.

In April, we're expanding this feature to include select 6 Series tractors, wheel loaders, and mowers. And the excitement doesn't stop there - the Maintenance Manager features that have been transforming operations in Operations Center & Property Center will be available in Equipment Mobile May 2024.

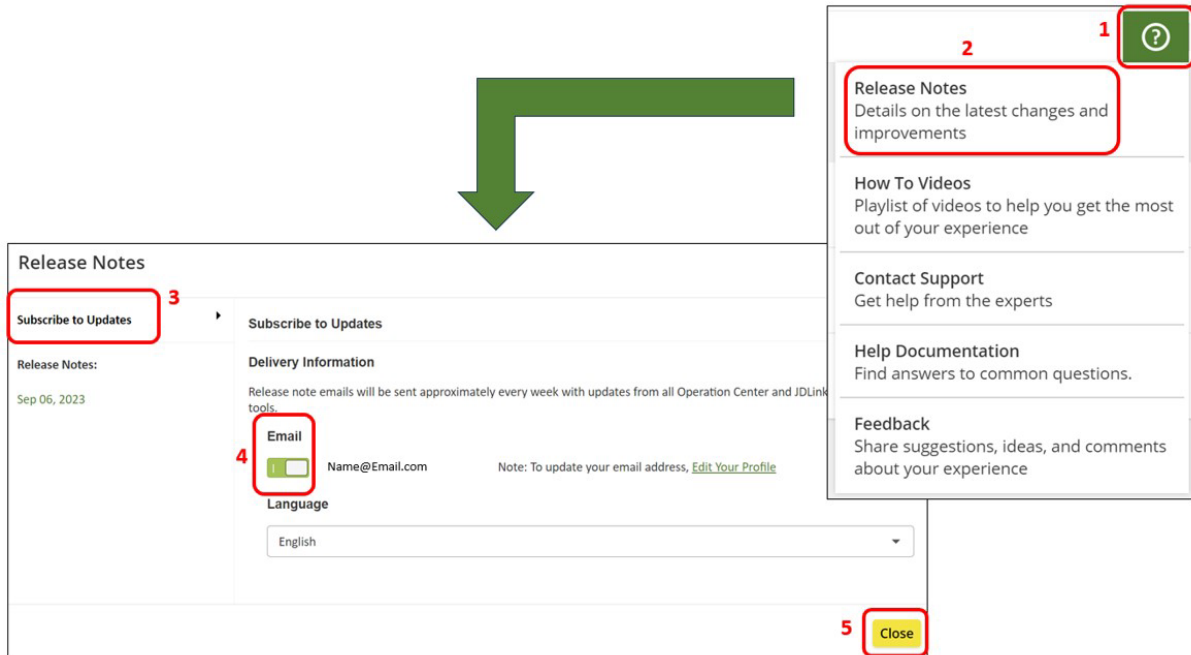
Get ready to elevate your equipment maintenance game with John Deere - where innovation meets reliability.

Stay informed on Operations Center updates – Subscribe to automatic email updates.

Receive automatic weekly emails each time a new update is available in Operations Center.

How to subscribe:

1. Go to Operations Center and click the question mark (?) in the upper right corner.
2. Select "Release Notes" from the dropdown menu.
3. In the Release Notes window, select "Subscribe to Updates" in the upper left corner.
4. Select the toggle for email and your preferred language.
5. Select close.



Subscribe to email updates in Operations Center

Previous Release Notes

- [March 2024](#)
- [January 2024](#)
- [November 2023](#)
- [September 2023](#)
- [July 2023](#)
- [May 2023](#)
- [March 2023](#)
- [January 2023](#)
- [September 2022](#)
- [July 2022](#)
- [May 2022](#)
- [March 2022](#)
- [January 2022](#)



Download the Operations Center mobile for iOS® systems from the Apple® App Store® or for Android™ systems from the Google Play™ Store.

iOS is a trademark of Cisco Technology, Inc. used under license by Apple Inc. Apple and App Store are trademarks of Apple Inc. Android and Google Play are trademarks of Google LLC.