

John Deere Agri Services Releases Version 9.4.6 of the AGRIS™ Product Suite

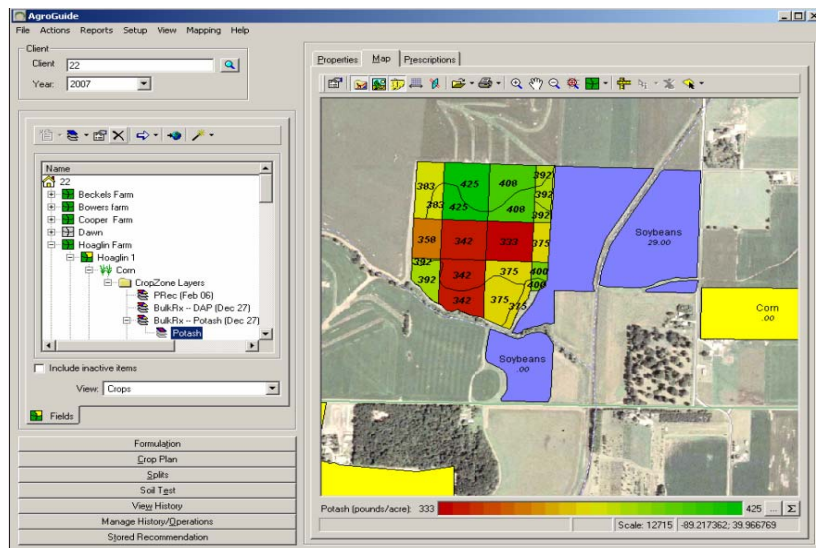
ALPHARETTA, GA (February 19, 2007) – John Deere Agri Services announces a new release of its AGRIS Product Suite which includes enhancements to the AGRIS V9 business management system, the AgroGuide™ agronomy management system, and the oneWeigh® scale automation system. The latest version, 9.4.6, focuses on improvements to increase efficiency and provide agribusinesses and their grower-customers with more information for improved decision-making capabilities. The release includes agronomy system enhancements - including an integrated GIS extended option – plus improvements in inventory, accounts receivable, patronage, and scale automation functionality.

Enhancements to the AGRIS V9 business management system center on improvements in the inventory, accounts receivable, and patronage packages including the following:

- New forms that allow for combining prepayment and booking information for clear, concise customer communication.
- Additional account balance inquiry filtering for increased speed and flexibility.
- New A/R report that provides a snapshot of a customer's open activity in a quick, easy-to-understand format.
- Improvements in how patronage codes print on refund checks for more concise and understandable customer documentation.

The AgroGuide agronomy management system contains many additional enhancements including:

- New explorer tree interface for easier and faster creation of farms, fields, and crop zones.
- Improved interface that provides the ability to manage, from a single server, weights given to and received from multiple automated blenders.
- Ability to combine multiple releases on invoices, delivery tickets, and statements for more clear and concise grower documentation.
- Additional farm and field information during formulation searches for improved decision making.



Enhancements to the AgroGuide system as part of the V9.4.6 release include a multi-user, integrated GIS system extended option that allows multiple operators to create variable rate prescriptions that flow to the field ticket in the agronomy system and to the AGRIS V9 Accounting system.

A significant enhancement within the agronomy system is the addition of a new GIS extended option that allows multiple operators to create variable rate prescriptions that flow to the field ticket in the agronomy system and, for invoicing purposes, to the AGRIS V9 Accounting system. The GIS functionality also provides the ability to generate variable rate prescriptions for export to assorted equipment controllers and the ability to import geo-referenced soil sample test results.

The oneWeigh scale automation system enhancements include:

- Custom grading interface that enables users to create or modify grading interfaces and capture data from new or existing meters.
- RFID interface improvements involving auto-populated data from user-defined information.
- Message Board extended option that allows information from the oneWeigh system to display on an outdoor message board.

John Deere Agri Services is focused on providing technology and service solutions across the ag supply chain, with tools and expertise that provide improved processes and profitability. John Deere Agri Services is a business unit of Deere & Company (NYSE:DE). John Deere is the world's leading manufacturer of agricultural and forestry equipment; a leading supplier of equipment used in lawn, grounds, and turf care; and a major manufacturer of construction equipment. Additionally, John Deere

manufactures engines used in heavy equipment and provides financial services and other related activities that support the core businesses. Since it was founded in 1837, the company has established a heritage of quality products and services providing performance that endures to customers worldwide.

For More Information, Contact:

Phone: 800-393-0075

Fax: 770-238-5101

E-mail: MySales@JohnDeere.com