

FILTER OVERVIEW WITH SERVICE INTERVALS AND CAPACITIES

R4045/R4060 Self-Propelled Sprayer

ENGINE

PRIMARY AIR FILTER
[AN403918](#) (FT4)
[AT411949](#) (Stage II)

Replace after first 100 hours. Do not attempt to clean filters.



ENGINE

SECONDARY AIR FILTER
[AN403919](#) (FT4)
[AT411946](#) (Stage II)

Replace secondary filter, every second primary filter change.



ENGINE

OIL FILTER - [RE509672](#)

Initial oil and filter change is after 100 hours of operation, then replace every 500 hours or annually, whichever occurs first.

(Click here for [capacity](#))



ENGINE

PRIMARY FUEL FILTER
[RE539465](#) (FT4)

FINAL FUEL FILTER
[RE533910](#) (FT4)

FUEL FILTER KIT
[RE525523](#) (Stage II)

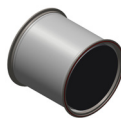
Replace after every 500 hours. (Always replace both filters at the same time.)



ENGINE

DIESEL PARTICULATE FILTER (DPF)
[RE561836](#)

When exhaust filter and warning light indicators are alerted on display, you have 250 hours to replace your diesel particulate filter (DPF).



ENGINE

DIESEL EXHAUST FLUID (DEF) DOSING UNIT FILTER [DZ114640](#)

Replace after every 4500 hours or every three years of operation, whichever occurs first, and as required.

(Click here for [capacity](#))



CAB

RECIRCULATION AIR FILTER
[RE333569](#)

Replace after every 500 hours or annually, whichever occurs first, and as required.



CAB

FRESH AIR FILTER
[RE333567](#)

Replace after every 500 hours or annually, whichever occurs first, and as required.



HYDRAULIC

RESERVOIR BREATHER FILTER
[AKK25690](#) (Filler Cup with Filter)

Replace after every 1000 hours. Fill cap contains hydraulic reservoir breather filter and should be replaced when hydraulic oil is changed.



SUSPENSION

AIR DRYER FILTER [AKK11031](#)

Replace annually or 1000 hours.
 (Click here for [capacity](#))



HYDRAULIC

OIL FILTER
[AT318160](#)

Replace after every 1000 hours.
 (Click here for [capacity](#))



HYDRAULIC

HYDROSTATIC FILTERS
 (R4045)(-206000) - [AN203010](#)
 (R4045)(206001-) - [AKK23814](#)
 (R4060)(-207000) - [AN203010](#)
 (R4060)(207001-) - [AKK23814](#)

Replace after every 1000 hours.



(Click here for [capacity](#))

ENGINE

FUEL TANK VENT FILTER
[H216169](#)

Clean as required.

(Click here for [capacity](#))



ENGINE

DIESEL EXHAUST FLUID (DEF) VENT FILTER [H216169](#)

Replace after every 4500 hrs or 3 years which ever comes first.

(Click here for [capacity](#))



JOHN DEERE

Genuine Parts and Service

https://www.deere.com/en_US/parts/parts_by_industry/ag/fmi/filter_maintenance_information.page

CAPACITIES

R4045/R4060 Self-Propelled Sprayer

CAPACITIES (Approximate):

Fuel Tank:

..... 586 L (155 gal)

Diesel Exhaust Fluid (DEF) Tank: John Deere™ Diesel Exhaust Fluid

..... 29.5 L (7.8 gal)

Cooling System with Heater: Cool-Gard™ II

R4060 31.4 L (8.3 gal)

R4045 38 L (10 gal)

Crankcase including Filter: Plus-50™ II

..... 31 L (8.2 gal)

Hydraulic Reservoir: Torq-Gard Supreme™

R4060 95.6 L (25.3 gal)

R4045 98.4 L (26 gal)

Hydraulic System: Torq-Gard Supreme™

..... 208 L (55 gal)

Planetary Hubs (Each): John Deere GL-5 80W-140 Synthetic Gear Lube

..... 2.5 L (0.7 gal)

[Return to Filter Overview](#)

