

REPLACEMENT PARTS GUIDE

759JH (PIN: —1T0759JH_ _C220452)



HYDRAULIC OIL RETURN FILTER

[F061786](#)

Interval (hrs) - 2000.

ENGINE ROCKER ARM COVER GASKET

[R502598](#) - UPPER

Interval (hrs) - 2000.

ENGINE ROCKER ARM COVER GASKET

[R502719](#) - LOWER

Interval (hrs) - 2000



FINAL FUEL FILTER ELEMENT

[R502777](#)

Interval (hrs) - 500.



PRIMARY FUEL FILTER ELEMENT

[RE522372](#)

Interval (hrs) - 500.



FINAL FUEL FILTER PRE-SCREEN ELEMENT

[R502778](#)

Interval (hrs) - 500.



ENGINE OIL FILTER

[RE509672](#)

Interval (hrs) - 500.



HYDRAULIC BREATHER FILTER

[F122930](#)

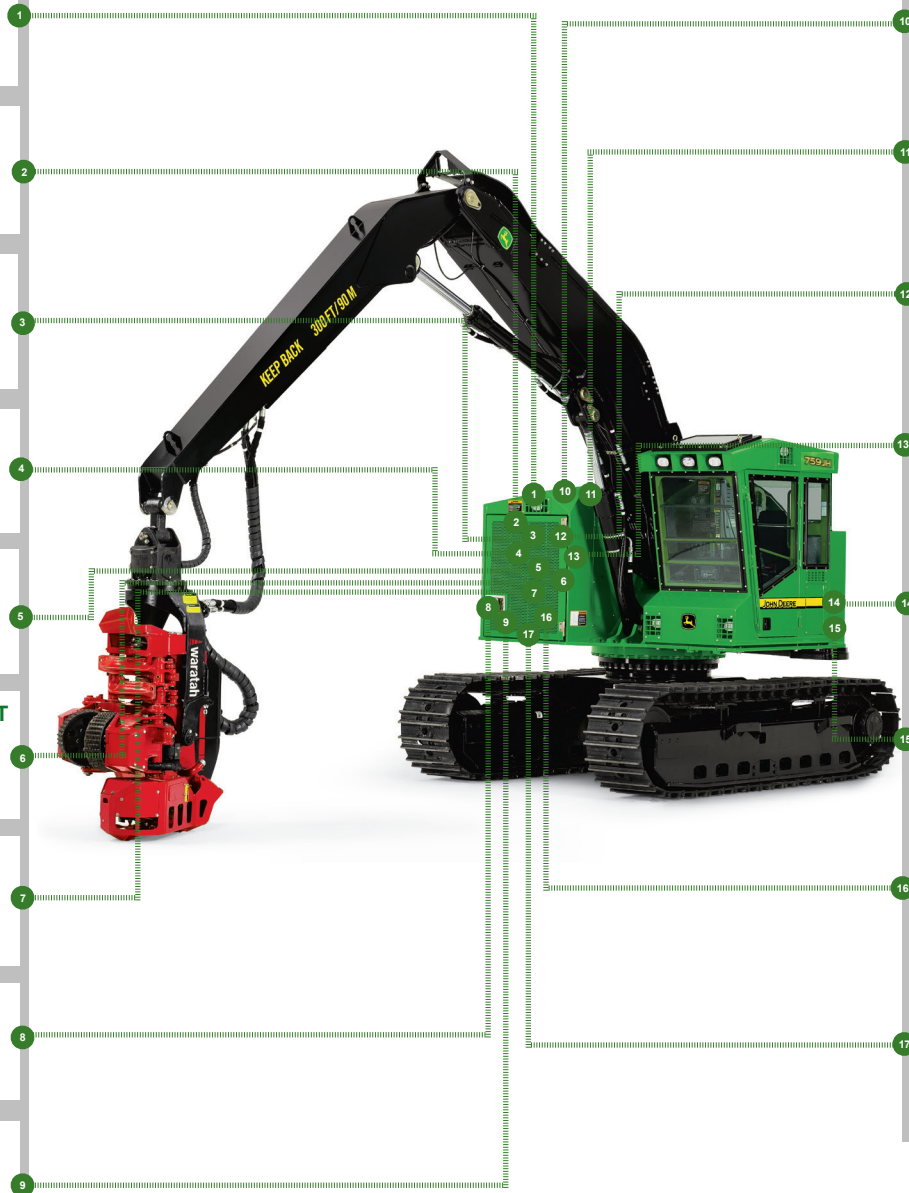
Interval (hrs) - 2000.



ENGINE CRANKSHAFT DAMPENER

[RE48454](#) - ENGINE 6081HTJ07

Interval (hrs) - 4000.



ENGINE AIR FILTER ELEMENT - PRIMARY

[AT175223](#)

Interval (hrs) - As Required



ENGINE AIR FILTER ELEMENT - SECONDARY

[AT175224](#)

Interval (hrs) - As Required.



PRIMARY FUEL FILTER ELEMENT

[RE531703](#)

Interval (hrs) - 500



FINAL FUEL FILTER ELEMENT

[RE522688](#)

Interval (hrs) - 500.



CAB FRESH AIR FILTER

[700093800](#)

Interval (hrs) - As Required.



CAB RECIRCULATING AIR FILTER

[F436088](#)

Interval (hrs) - As Required.



ENGINE CRANKSHAFT DAMPENER

[RE500917](#) - ENGINE 6081HTJ08

Interval (hrs) - 4000.



ENGINE CRANKSHAFT DAMPENER KEY

[R523306](#)

Interval (hrs) - 4000.










JOHN DEERE

Genuine Parts and Service

OILS AND CAPACITIES INFORMATION

759JH (PIN: —1T0759JH_ _C220452)

Part Description	Part Number	Qty or capacity	Change Interval In Hours
John Deere Plus-50™ II Engine Oil 	TY26674 ³	28.0 L (7.4 gal)	500
API GL-5 Gear Oil 	TY26372 ³	9.6 L (2.5 gal)	500
Hy-Gard™ Pump Drive Gear Case Oil 	TY6354 ³	6.6 L (1.8 gal)	1000
Enclosure Door Pump Oil DEXRON™ III ATF 	TY26459	1.6 L (1.7 qt.)	2000
John Deere PLUS-50™ II Hydraulic Oil 	TY26671 ³	136.0 L (36.0 gal)	2000
COOL-GARD™ II Pre-Mix 	TY26575	36.0 L (9.5 gal)	6000
Coolant Extender 	TY26603	As Required	As Required
Fluid Analysis Kits⁴			
Diesel Engine Oil	AT346594	1	250
Hydraulic Oil	AT346594	1	500
Track Drive Planetary Oil	AT346594	2	500
Swing Drive Gear Case Oil	AT346594	1	500
Pump Drive Gear Case Oil	AT346594	1	500
Diesel Fuel	AT180344	1	500
Engine Coolant	TY27787	1	500
COOL-GARD™ II Test Strips	TY26605	1	1000
<p>³ See operator's manual for recommended oil type and oil viscosities based on operating temperatures.</p> <p>⁴ Based on fluid analysis results, intervals may need to be adjusted for your operating conditions. Consult your local John Deere dealer.</p>			

Plus-50 is a trademark of Deere & Company

Hydrau is a trademark of Deere & Company

Hy-Gard is a trademark of Deere & Company

Cool-Gard is a trademark of Deere & Company

Service Intervals

As Required	
• Inspect serpentine belt	• Check and clean cab fresh air and cab recirculation air filters
• Inspect undercarriage frame joints	• Add coolant extender as indicated by COOL-GARD™ II test strips
• Replace engine air cleaner elements (replace secondary element every third primary element cleaning or change)	
Every 10 Hours or Daily	
• Lubricate hoist (boom) joints and cylinder ends	• Check pump drive gear case oil level
• Check and clean radiator pre-screen	• Check swing drive gear case oil level
• Check engine coolant level	• Check hydraulic oil level
• Check and clean cooling system and condenser fins	• Check fire extinguisher gauge
• Fire suppression system—if equipped ¹	• Check and adjust track sag
• Check engine oil level	• Lubricate swing pinion and bearing
• Check and drain fuel/water separator	• Lubricate leveler pivot joints (759J/JH)
Every 100 Hours	
• Check track drive planetary oil level	• Check engine rpm
• Lubricate door hinges	• Check oil level in idler assembly
• Lubricate secondary exit latches and knobs	• Lubricate swing gear case bearing
• Check skylight latch tension	• Lubricate rotary manifold (759J/JH)
Initial Service - 250 Hours	
• Drain and refill engine breakin oil and replace filter	• Check hydraulic pressures
• Drain and refill pump drive gear case oil	• Check swing bearing cap screw torque
• Drain and refill swing gear case oil	• Check lower roller mounting cap screw torque
• Drain and refill track drive planetary oil	• Check track shoe cap screw torque
• Check planetary and sprocket mounting cap screw torque	
Every 250 Hours	
• Take engine oil sample	
Every 500 Hours	
• Drain and refill engine oil and replace filter	• Take hydraulic oil sample
• Drain and refill track drive planetary oil	• Take engine coolant sample
• Check battery electrolyte level	• Take pump drive gear case oil sample
• Check enclosure door pump oil level	• Take swing gear case oil sample
• Clean or replace fuel strainer screen	• Take track drive planetary oil sample
• Replace engine fuel filters	• Take diesel fuel sample
Every 1000 Hours	
• Drain and refill pump drive gear case oil	• Check coolant
• Drain and refill swing gear case oil	
Every 2000 Hours	
• Check and adjust engine valve clearance	• Replace hydraulic oil return filters
• Drain and refill enclosure door pump oil	• Replace hydraulic breather filter
• Drain and refill hydraulic oil	
Every 4000 Hours	
• Replace engine crankshaft dampener	
Every 6000 Hours	
• Drain and refill engine cooling system	