



# REPLACEMENT PARTS GUIDE

744K (PIN: 1DW744K\_\_D664101—) / (PIN: 1DW744K\_\_C664101—)



**ENGINE AIR FILTER ELEMENT  
SECONDARY - [AT175224](#)**

Interval (hrs) - 1000.



**HYDRAULIC RESERVOIR  
BREATHER FILTER [AM39653](#)**

Interval (hrs) - 500.



**FUEL TANK BREATHER FILTER**

[RE52504](#)

Interval (hrs) - 2000.



**ROCKER ARM COVER GASKET**

[R527884](#)

Interval (hrs) - 2000.



**ENGINE AIR FILTER ELEMENT PRIMARY**

[AT223226](#)

Interval (hrs) - 1000.



**ENGINE AIR CLEANER DUST UNLOADER  
VALVE - [T158495](#)**

Interval (hrs) - 1000.



**IN-LINE FUEL STRAINER**

[AT223493](#)

Interval (hrs) - 500.



**AUXILIARY FUEL FILTER AND WATER  
SEPARATOR (IF EQUIPPED) - [AT365869](#)**

Interval (hrs) - 500.



**PRIMARY AND FINAL FUEL FILTER  
ELEMENT**

[RE525523](#)

Interval (hrs) - 500.



**OIL FILTER**

[RE521420](#)

Interval (hrs) - 250.



**TRANSMISSION OIL FILTERS**

[AT336140](#)

Interval (hrs) - 2000.



**FAST FILL FUEL BREATHER FILTER  
(IF EQUIPPED) - [T225008](#)**

Interval (hrs) - 500.



**CRANKSHAFT DAMPER**

[RE520465](#), [RE57604](#)

Interval (hrs) - 4000.



**AXLE OIL FILTER**

[AH128449](#)

Interval (hrs) - 1000.



**OUTER PIN SEALS**

**BOOM TO ATTACHMENT JOINT [AT341092](#)**

**ATTACHMENT-TO-BUCKET LINK JOINT**

[AT410593](#)

**ATTACHMENT LINK-TO-BELLCRANK JOINT**

[AT410593](#)

**BELLCRANK-TO-BOOM JOINT**

[AT410592](#)

**STEERING CYLINDER JOINT**

[AT276674](#)

Interval (hrs) - As Required.



**CAB FRESH AIR FILTER ELEMENT**

[AT191102](#)

**CAB RECIRCULATION AIR FILTER**

**ELEMENT - [AT307501](#)**

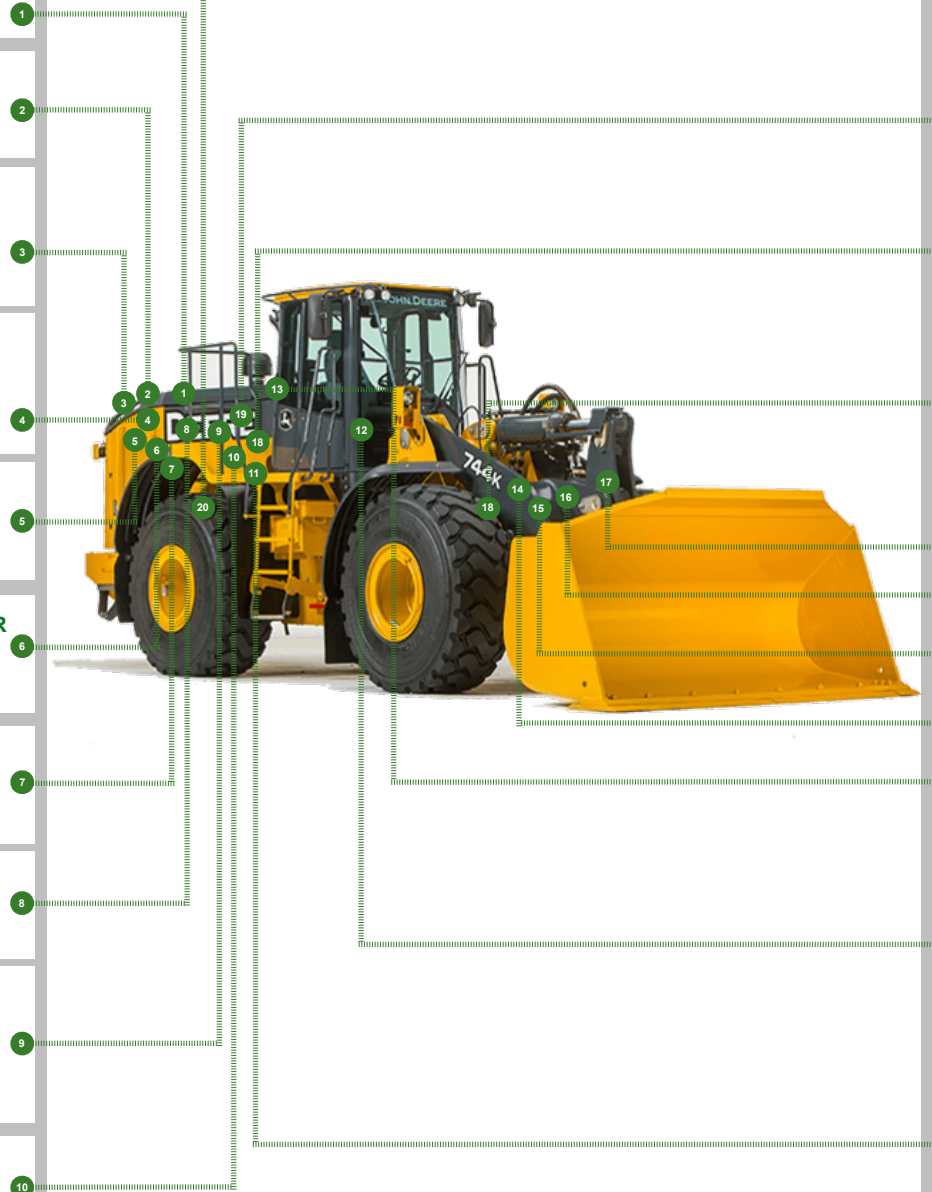
Interval (hrs) - As Required.



**HYDRAULIC SYSTEM RETURN  
FILTERS**

[AT335977](#)

Interval (hrs) - 4000.










CLICK PART NUMBER TO BUY

\*See operator's manual for additional details.

# REPLACEMENT PARTS GUIDE

## 744K (PIN: 1DW744K\_\_D664101— ) / (PIN: 1DW744K\_\_C664101— )

Part Description	Part Number	Qty or capacity	Change Interval In Hours
John Deere Plus-50™ II Engine Oil <sup>3</sup> 	<a href="#">TY26674</a>	34.0 L (9.0 gal)	500
John Deere Hydrau™ Hydraulic Oil <sup>3</sup> 	<a href="#">TY27318</a>	159.0 L (42.0 gal.)	4000
COOL-GARD™ II Pre-Mix 	<a href="#">TY26575</a>	44.8 L (11.8 gal)	6000
Coolant Extender 	<a href="#">TY26603</a>	As Required	As Required
John Deere Hy-Gard™ Transmission 	<a href="#">TY6354</a>	28.0 L (7.4 gal)	2000
John Deere Hy-Gard™ Park Brake 	<a href="#">TY6354</a>	0.71 L (24.0 oz)	1000
John Deere Hy-Gard™ Front and Rear Axle 	<a href="#">TY6354</a>	55.0 L (14.5gal.)	2000
Fluid Analysis Kits <sup>4</sup>			
Diesel Engine Oil	<a href="#">AT346594</a>	1	250
Transmission Oil	<a href="#">AT346594</a>	1	500
Axle Oil	<a href="#">AT346594</a>	2	500
Hydraulic Oil	<a href="#">AT346594</a>	1	500
Diesel Fuel	<a href="#">AT180344</a>	1	500
Engine Coolant	<a href="#">TY26873</a>	1	500
COOL-GARD™ II Test Strips	<a href="#">TY26605</a>	1	As Required
<sup>3</sup> See operator's manual for recommended oil type and oil viscosities based on operating temperatures. <sup>4</sup> Based on fluid analysis results, intervals may need to be adjusted for operating conditions. Consult an authorized John Deere dealer.			

Plus-50 is a trademark of Deere & Company  
 Hy-Gard is a trademark of Deere & Company  
 Hydrau is a trademark of Deere & Company  
 COOL-GARD is a trademark of Deere & Company



## Service Intervals

As Required	
<input type="checkbox"/> Inspect tires and check pressure	<input type="checkbox"/> Replace fast fill fuel breather filter (if equipped)
<input type="checkbox"/> Check wheel bolt/nut torque	<input type="checkbox"/> Drain water from auxiliary fuel filter (if equipped)
<input type="checkbox"/> Inspect engine air cleaner elements	<input type="checkbox"/> Check windshield washer fluid level
<input type="checkbox"/> Inspect air conditioner compressor and alternator belt	<input type="checkbox"/> Drain water from primary fuel filter with water separator
<input type="checkbox"/> Check rear camera and radar object detection (ROD) system (if equipped)	<input type="checkbox"/> Drain water from final fuel filter
<input type="checkbox"/> Clean cooler cores	<input type="checkbox"/> Check and clean or replace cab fresh air filter
<input type="checkbox"/> Check and clean or replace cab recirculating air filter	
Every 10 Hours or Daily	
<input type="checkbox"/> Clean or replace engine air cleaner dust unloader valve	<input type="checkbox"/> Check hydraulic system oil level
<input type="checkbox"/> Check coolant level at surge tank	<input type="checkbox"/> Check transmission oil level
<input type="checkbox"/> Check engine oil level	<input type="checkbox"/> Inspect outer pin seals
Initial Service - 100 Hours <sup>1</sup>	
<input type="checkbox"/> Drain and refill front and rear axle oil	<input type="checkbox"/> Replace axle oil filters
Every 100 Hours	
<input type="checkbox"/> Lubricate loader linkage and cylinder pivots	
Initial Service - 250 Hours <sup>2</sup>	
<input type="checkbox"/> Drain and refill engine oil and replace filter	
Every 250 Hours	
<input type="checkbox"/> Take engine oil sample	
Every 500 Hours	
<input type="checkbox"/> Check battery electrolyte level and terminals	<input type="checkbox"/> Lubricate driveline upper and lower sliding joints and lower U-joints
<input type="checkbox"/> Check front and rear axle oil level	<input type="checkbox"/> Check park brake oil level
<input type="checkbox"/> Check air intake hoses and charge air cooler tube couplings	<input type="checkbox"/> Lubricate front and rear shaft seals on park brake
<input type="checkbox"/> Drain and refill engine oil and replace filter	<input type="checkbox"/> Replace auxiliary fuel filter (if equipped)
<input type="checkbox"/> Replace fast fill fuel breather (if equipped)	<input type="checkbox"/> Lubricate front and rear axle shaft seals
<input type="checkbox"/> Replace in-line fuel strainer	<input type="checkbox"/> Take transmission oil sample
<input type="checkbox"/> Replace primary fuel filter	<input type="checkbox"/> Take hydraulic oil sample
<input type="checkbox"/> Replace final fuel filter	<input type="checkbox"/> Take axle oil sample
<input type="checkbox"/> Check ride control accumulator	<input type="checkbox"/> Take diesel fuel sample
<input type="checkbox"/> Replace hydraulic reservoir breather	<input type="checkbox"/> Take engine coolant sample
Every 1000 Hours	
<input type="checkbox"/> Replace engine air cleaner elements	<input type="checkbox"/> Replace axle oil filters
<input type="checkbox"/> Replace engine air cleaner dust unloader valve	<input type="checkbox"/> Clean hydraulic fan drive case drain in-line screen
<input type="checkbox"/> Check coolant condition	<input type="checkbox"/> Lubricate frame hinge pivots
<input type="checkbox"/> Remove and clean engine crankcase vent tube	<input type="checkbox"/> Drain and refill park brake oil
Every 2000 Hours	
<input type="checkbox"/> Drain and refill front and rear axle oil	<input type="checkbox"/> Rerun transmission clutch calibration (cab monitor)
<input type="checkbox"/> Check and adjust engine valve lash	<input type="checkbox"/> Clean front and rear axle oil recirculation screens
<input type="checkbox"/> Drain and refill transmission oil and replace filter	<input type="checkbox"/> Replace outer pin seals
Every 4000 Hours	
<input type="checkbox"/> Clean hydraulic pump case drain in-line screen	<input type="checkbox"/> Replace hydraulic system return filter
<input type="checkbox"/> Clean hydraulic system fill strainer	<input type="checkbox"/> Drain, flush, and refill hydraulic system oil
<input type="checkbox"/> Replace crankshaft damper	
Every 5000 Hours	
<input type="checkbox"/> Check driveline damper for cracks	
Every 6000 Hours	
<input type="checkbox"/> Drain and refill cooling system	