

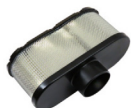
# REPLACEMENT PARTS GUIDE

## 6603 (L0040001-) and 6403 (L0040001-) Tractors



### ENGINE

#### PRIMARY AIR FILTER [SU20768](#)



#### SECONDARY AIR FILTER [RE253519](#)

Replace after every 250 hours or after every 1000 hours or annually or as required.

#### PRIMARY FUEL FILTER (6603) [RE509208](#), [RE509718](#) (6403) [RE541922](#)



#### SECONDARY FUEL FILTER (6603) [RE62419](#) (6403) [RE522868](#)



Replace after every 500 hours. Replace as required.

#### OIL FILTER [RE504836](#)



Change after every 250 hours. When using any lubricant other than TorqGARD™ or Plus-50™ service interval is 200 hours.

### CAB



#### RECIRCULATION AIR FILTER [RE195491](#)

Change every 250 hours or annually or as required (if equipped).



#### FRESH AIR FILTER [RE198488](#)

Change after every 250 hours or annually or as required (if equipped).

### HYDRAULIC



#### OIL FILTER [SJ11792](#)

Replace after initial 100 hours and then after every 500 hours.



\*Parts located in front with respect to model image.



CLICK PART NUMBER TO BUY

\*See operator's manual for additional details.

# CAPACITIES

## 6603 (L0040001-) and 6403 (L0040001-) Tractors



### CAPACITIES (Approximate):

#### **Fuel Tank:**

6403 Base .....	152 L (40 gal)
6403 Optional .....	230 L (60.7 gal)
6603 Base .....	230 L (60.7 gal)

#### **Cooling System:**

##### **Cool-Gard™ II**

6403.....	13.5 L (2.96 gal)
6603.....	18.5 L (4.06 gal)

#### **Crankcase with Filter:**

##### **Plus-50™ II**

6403.....	12 L (2.63 gal)
6603.....	19 L (4.17 gal)

#### **Transmission and Hydraulic System:**

##### **Hy-Gard™**

.....	58 L (15.3 gal)
-------	-----------------

#### **Mechanical Front Wheel Drive (MFWD) Axle Housing:**

##### **Hy-Gard™**

.....	5 L (1.09 gal)
-------	----------------

#### **Mechanical Front Wheel Drive (MFWD) Hubs (Each):**

##### **Hy-Gard™**

.....	0.8 L (0.17 gal)
-------	------------------

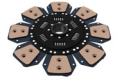
\*Parts located in front with respect to model image.

# REPLACEMENT PARTS GUIDE

## 6603 (L0040001-) and 6403 (L0040001-) Tractors



### ENGINE



**CLUTCH DISK**  
[YZ91139](#)



**BRAKE DISK**  
[AL160176](#)  
[SU34458](#)



**FAN DRIVE BELT**  
[T428834](#) (CAB) (6403)  
[DZ119521](#) (OOS) (6403)  
[R228566](#) (CAB) (6603)  
[T428724](#) (OOS) (6603)



**ALTERNATOR**  
[RE505895](#) (12V, 75A)  
[RE505896](#) (12V, 90A)



**BATTERY**  
[TY25879](#) (12V, 925 CCA)  
[TY6128](#) (12V, 950CCA)



### CAB

#### SEAT

[SJ40379](#)  
[SJ40380](#)



[TCA18457](#) - Back  
[TCA18456](#) - Bottom

### AXLE

#### TIE ROD ENDS



[AL204774](#) (USE WITH AL221102) -  
Tie-Rod Assembly



[AL231184](#) (USE WITH AL232263) -  
Tie-Rod Assembly



[AL204776](#) (USE WITH AL221102) -  
Tie-Rod Assembly



[AL231187](#) (USE WITH AL232263) -  
Tie-Rod Assembly



[SJ31613](#) (OOS) -  
Tie-Rod Assembly



[AM105808](#) - RH Tie-Rod End  
[AM105809](#) - LH Tie-Rod End

\*Parts located in front with respect to model image.