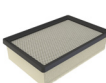


# REPLACEMENT PARTS GUIDE

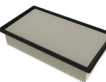
## 644 P (PIN: 1DW644PA\_\_L\_10283—)



### CAB FRESH AIR FILTER

[AT191102](#)

Interval (hrs) - As Required.



### CAB RECIRCULATING FILTER

[AT307501](#)

Interval (hrs) - As Required.



### DRIVELINE DAMPER

[AT308994](#)

Interval (hrs) - As Required.



### HYDRAULIC SYSTEM RETURN FILTER

[AT335977](#)

Interval (hrs) - 4000



### OUTER PIN SEALS

[AT341091](#)

Interval (hrs) - 2000



### AXLE OIL FILTERS (IF EQUIPPED)

[AH128449](#)

Interval (hrs) - 1000.



### TRANSMISSION OIL FILTER

[AT468647](#)

Interval (hrs) - 2000.



### FUEL TANK BREATHER

[H216169](#)

Interval (hrs) - 1000



### ENGINE AIR CLEANER DUST UNLOADER VALVE

[T158495](#)

Interval (hrs) - 1000.



### PRIMARY FUEL FILTER

[DZ115392](#)

Interval (hrs) - 500.



### PRIMARY FUEL FILTER ELEMENT

[DZ115392](#)

Interval (hrs) - 500.



### ENGINE OIL FILTER

[RE539279](#)

Interval (hrs) - 500.



### HYDRAULIC RESERVOIR BREATHER FILTER

[AM39653](#)

Interval (hrs) - 500



### FAST FILL FUEL BREATHER FILTER (IF EQUIPPED)

[T225008](#)

Interval (hrs) - 500.



### ENGINE AIR FILTER ELEMENT—PRIMARY FILTER

[AT489304](#)

Interval (hrs) - 1000.



### ENGINE AIR FILTER ELEMENT—SECONDARY FILTER

[AT489303](#)

Interval (hrs) - 1000.



### OPEN CRANKCASE VENTILATION (OCV) FILTER

[RE553703](#)

Interval (hrs) - 2000.



### DIESEL EXHAUST FLUID (DEF) IN-LINE FILTER

[DZ118548](#)

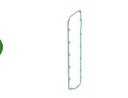
Interval (hrs) - 6000.



### DIESEL EXHAUST FLUID (DEF) DOSING UNIT FILTER

[DZ114640](#)

Interval (hrs) - 4000.



### ENGINE ROCKER ARM COVER GASKET

[R528743](#)

Interval (hrs) - 2000.



### DIESEL EXHAUST FLUID (DEF) TANK BREATHER FILTER

[H216169](#)

Interval (hrs) - 4000.



### IN-LINE FUEL FILTER

[AT489745](#)

Interval (hrs) - 500.



### DIESEL PARTICULATE FILTER (COMPONENT OF EXHAUST FILTER)

[DZ104596](#)

Interval (hrs) - As Required.



# OIL & CAPACITIES INFORMATION

## 644 P (PIN: 1DW644PA\_\_L\_10283— )

Part Description	Qty or capacity	Change Interval In Hours
John Deere Plus-50™ II Engine Oil <sup>5</sup>	28.0 L (7.4 gal)	500
John Deere Hy-Gard™ Park Brake Oil <sup>3,5</sup>	600.0 mL (20.3 fl oz)	1000
John Deere Hy-Gard™ Transmission Oil <sup>5</sup>	23.0 L (6.1 gal)	2000
John Deere Hy-Gard™ Front Axle Oil <sup>5</sup>	22.0 L (5.8 gal)	2000
John Deere Hy-Gard™ Rear Axle Oil <sup>5</sup>	22.0 L (5.8 gal)	2000
John Deere Hydrau™ Hydraulic System Oil	103.0 L (27.2 gal)	4000
John Deere Cool-Gard™ Pre-Mix	42.8 L (11.3 gal)	6000
Coolant Extender	As Required	

# OILS & CAPACITIES INFORMATION

644 P (PIN: 1DW644PA\_\_L\_10283— )

Fluid Analysis Test Kits <sup>6</sup>		
Part Description	Qty or capacity	Change Interval In Hours
Diesel Engine Oil	1	250
Transmission Oil	1	500
Axle Oil	2	500
Park Brake Oil	1	500
Hydraulic Oil	1	500
Diesel Fuel	1	500
Engine Coolant	1	500

<sup>3</sup>Reduce drain interval to 500 hours for deep mud, water, or snow operation.  
<sup>5</sup>See operator's manual for recommended oil type and oil viscosities based on operating temperatures.  
<sup>6</sup>Based on fluid analysis results, intervals may need to be adjusted for operating conditions. See an authorized John Deere dealer.

Plus-50 is a trademark of Deere & Company  
Hydrau is a trademark of Deere & Company  
Hy-Gard is a trademark of Deere & Company  
Cool-Gard is a trademark of Deere & Company

## Service Intervals

As Required	
<input type="checkbox"/> Check windshield washer fluid level	<input type="checkbox"/> Inspect engine air cleaner elements
<input type="checkbox"/> Check cab fresh air filter	<input type="checkbox"/> Inspect serpentine belt
<input type="checkbox"/> Check cab recirculation filter	<input type="checkbox"/> Clean cooler cores
<input type="checkbox"/> Check and clean precleaner housing (if equipped)	<input type="checkbox"/> Drain water from primary fuel filter with water separator
<input type="checkbox"/> Check and clean heating and air conditioning housing	<input type="checkbox"/> Service exhaust filter
<input type="checkbox"/> Inspect tires and check pressure	<input type="checkbox"/> Drain, flush, and refill fuel tank
<input type="checkbox"/> Check wheel bolt torque	<input type="checkbox"/> Lubricate cab door hinges
<input type="checkbox"/> Clean hydraulic pump case drain in-line screen	<input type="checkbox"/> Clean debris from coupler lock cylinder (if equipped)
<input type="checkbox"/> Check rear camera and radar object detection (ROD) system (if equipped)	<input type="checkbox"/> Clean and tighten battery terminals
Every 10 Hours or Daily	
<input type="checkbox"/> Clean air cleaner dust unloader valve	<input type="checkbox"/> Check hydraulic system oil level
<input type="checkbox"/> Check coolant level at surge tank	<input type="checkbox"/> Check transmission oil level
<input type="checkbox"/> Check engine oil level	<input type="checkbox"/> Inspect outer pin seals (if equipped)
Every 100 Hours	
<input type="checkbox"/> Lubricate loader linkage and cylinder pivots	<input type="checkbox"/> Lubricate coupler lock pins (if equipped)
Every 250 Hours	
<input type="checkbox"/> Take engine oil sample	
Initial Service—500 Hours <sup>1</sup>	
<input type="checkbox"/> Replace axle oil filters	
Every 500 Hours	
<input type="checkbox"/> Lubricate driveline lower U-joints <sup>2</sup>	<input type="checkbox"/> Replace in-line fuel filter
<input type="checkbox"/> Lubricate driveline upper and lower sliding joints <sup>2</sup>	<input type="checkbox"/> Check park brake oil level
<input type="checkbox"/> Lubricate front and rear axle shaft seals <sup>2</sup>	<input type="checkbox"/> Lubricate front and rear shaft seals on park brake
<input type="checkbox"/> Check hybrid battery electrolyte level (if equipped)	<input type="checkbox"/> Check ride control accumulator (if equipped)
<input type="checkbox"/> Replace hydraulic reservoir breather filter	<input type="checkbox"/> Take axle oil sample
<input type="checkbox"/> Check front and rear axle oil level	<input type="checkbox"/> Take transmission oil sample
<input type="checkbox"/> Check air intake hoses and charge air cooler tube couplings	<input type="checkbox"/> Take hydraulic oil sample
<input type="checkbox"/> Replace fast fill fuel breather (if equipped)	<input type="checkbox"/> Take park brake oil sample
<input type="checkbox"/> Drain and refill engine oil and replace filter	<input type="checkbox"/> Take diesel fuel sample
<input type="checkbox"/> Replace primary fuel filter with water separator	<input type="checkbox"/> Take engine coolant sample
<input type="checkbox"/> Replace final fuel filter	
Every 1000 Hours	
<input type="checkbox"/> Replace air cleaner dust unloader valve	<input type="checkbox"/> Replace axle oil filters
<input type="checkbox"/> Replace engine air cleaner elements	<input type="checkbox"/> Lubricate frame hinge pivots <sup>2</sup>
<input type="checkbox"/> Replace fuel tank breather filter	<input type="checkbox"/> Drain and refill park brake oil <sup>3</sup>
<input type="checkbox"/> Check coolant condition	
Every 2000 Hours	
<input type="checkbox"/> Drain and refill transmission oil and replace filter	<input type="checkbox"/> Check and adjust engine valve lash
<input type="checkbox"/> Drain and refill front and rear axle oil	<input type="checkbox"/> Replace outer pin seals
<input type="checkbox"/> Replace open crankcase vent (OCV) filter	<input type="checkbox"/> Rerun transmission clutch calibration (cab monitor)
Every 4000 Hours	
<input type="checkbox"/> Replace diesel exhaust fluid (DEF) tank breather filter	<input type="checkbox"/> Drain, flush, and refill hydraulic system oil
<input type="checkbox"/> Replace diesel exhaust fluid (DEF) dosing unit filter <sup>4</sup>	<input type="checkbox"/> Clean hydraulic system fill strainer
<input type="checkbox"/> Replace hydraulic system return filter	
Every 5000 Hours	
<input type="checkbox"/> Check driveline damper for cracks	
Every 6000 Hours	
<input type="checkbox"/> Drain and refill cooling system	<input type="checkbox"/> Replace diesel exhaust fluid (DEF) in-line filter <sup>4</sup>