

REPLACEMENT PARTS GUIDE

317G Skid Steer Loader (PIN: 1P0317G__J435000-)



CAB RECIRCULATION AIR FILTER ELEMENT (IF EQUIPPED)
[AT359416](#)
 Interval (hrs) - As Required.

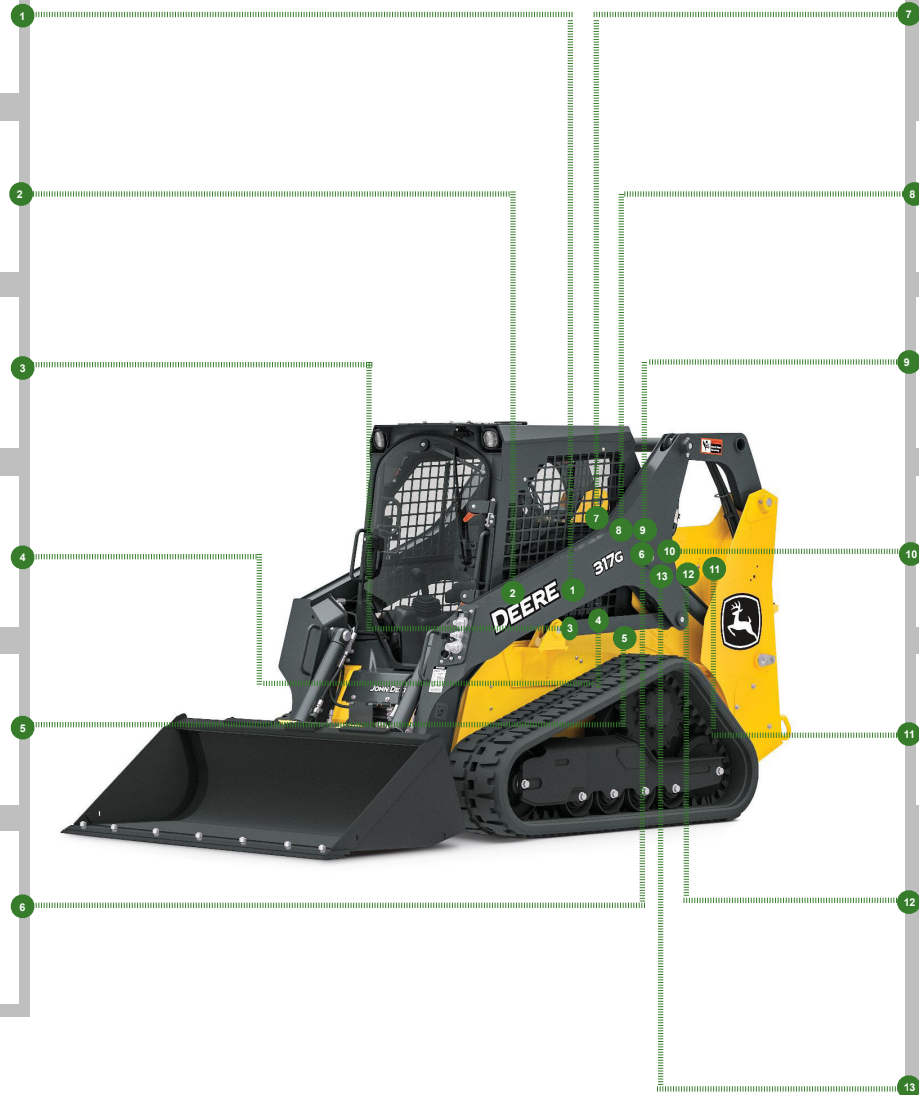
CAB FRESH AIR FILTER ELEMENT (IF EQUIPPED)
[AT441536](#)
 Interval (hrs) - As Required.

DUST UNLOADER VALVE
[M89679](#)
 Interval (hrs) - As Required.

HYDRAULIC OIL RESERVOIR BREATHER
[AT443309](#)
 Interval (hrs) - 1000.

HYDRAULIC OIL FILTER ELEMENT
[AT314164](#)
 Interval (hrs) - 1000.

DIESEL PARTICULATE FILTER (COMPONENT OF EXHAUST FILTER)
[MIU802216](#)
 Interval (hrs) - As Required.



ENGINE AIR FILTER ELEMENT- PRIMARY
[AT338105](#)
 Interval (hrs) - As Required.

ENGINE AIR FILTER ELEMENT- SECONDARY
[AT336803](#)
 Interval (hrs) - As Required.

FUEL TANK BREATHER
[H216169](#)
 Interval (hrs) - 1000.

ENGINE OIL FILTER ELEMENT
[MIU800650](#)
 Interval (hrs) - 500.

PRIMARY FUEL FILTER AND WATER SEPARATOR
[MIU802421](#)
 Interval (hrs) - 500.

ENGINE ROCKER ARM COVER GASKET
[MIU802182](#)
 Interval (hrs) - 1500.

FINAL FUEL FILTER ELEMENT
[MIU805005](#)
 INTERVAL (HRS) - 500.



OILS AND CAPACITIES INFORMATION

317G Skid Steer Loader (PIN: 1P0317G_ _ _J435000-)

Part Description	Qty or capacity	Change Interval In Hours
John Deere Plus-50™ II Engine Oil ³	7.5 L (2.0 gal)	500
John Deere Hydrau™ Hydraulic and Hydrostatic Oil ³	22.7 L (6.0 gal)	1000
John Deere Hy-Gard™ Oil ³ (per side) (312GR,314G,316GR and 318G only)	14.3 L (3.8 gal)	1000
John Deere Hydrau™ XR Hydrostatic Motor Brake Cavity Oil ³ (per side) (317G only)	0.35 L (0.09 gal))	1000
John Deere Cool-Gard™ II Pre-Mix (312GR and 314G only)	9.0 L (2.4 gal)"	6000
John Deere Cool-Gard™ II Pre-Mix (316GR, 317G, and 318G only)	12.0 L (3.2 gal)	6000
Fluid Analysis Kits ⁴		
Diesel Engine Oil	1	250
Hydraulic Oil	1	500
Diesel Fuel	1	500
Engine Coolant	1	500
³ See operator's manual for recommended oil type and oil viscosities based on operating temperatures. ⁴ Based on fluid analysis results, intervals may need to be adjusted for operating conditions. Consult an authorized John Deere dealer.		

Plus-50 is a trademark of Deere & Company

Hy-Gard is a trademark of Deere & Company

Hydrau is a trademark of Deere & Company

COOL-GARD is a trademark of Deere & Company

Service Intervals

As Required	
<input type="checkbox"/> Check and clean cooling package	<input type="checkbox"/> Check fuel tank breather
<input type="checkbox"/> Check tire pressure (312GR, 314G, 316GR, and 318G only)	<input type="checkbox"/> Replace primary and secondary engine air filter elements
<input type="checkbox"/> Check wheel lug nut torque (312GR, 314G, 316GR, and 318G only)	<input type="checkbox"/> Check and drain primary fuel filter and water separator
<input type="checkbox"/> Replace cab fresh air filter element (if equipped)	<input type="checkbox"/> Check accessory drive belt
<input type="checkbox"/> Replace cab recirculation air filter element (if equipped)	<input type="checkbox"/> Service exhaust filter
<input type="checkbox"/> Lubricate steering centering mechanism (if equipped) ¹	
Every 10 Hours or Daily	
<input type="checkbox"/> Check engine oil level	<input type="checkbox"/> Check hydraulic oil level
<input type="checkbox"/> Check coolant level	<input type="checkbox"/> Lubricate boom linkage, cylinder, and Quik-Tatch™ pivot points
Every 50 Hours	
<input type="checkbox"/> Check and clean dust unloader valve	<input type="checkbox"/> Lubricate Quik-Tatch™ engagement pins
<input type="checkbox"/> Check track tension (317G only)	
Every 100 Hours	
<input type="checkbox"/> Check and adjust accessory drive belt tension (machines without air conditioning only)	
Every 250 Hours	
<input type="checkbox"/> Take engine oil sample	
Every 500 Hours	
<input type="checkbox"/> Drain and refill engine oil and replace filter	<input type="checkbox"/> Take hydraulic oil sample
<input type="checkbox"/> Replace primary fuel filter and water separator	<input type="checkbox"/> Take engine coolant sample
<input type="checkbox"/> Replace final fuel filter	<input type="checkbox"/> Take diesel fuel sample
<input type="checkbox"/> Drain water and sediment from fuel tank	<input type="checkbox"/> Lubricate steering linkage (if equipped) ¹
<input type="checkbox"/> Check chain case oil level (312GR, 314G, 316GR, and 318G only)	<input type="checkbox"/> Lubricate foot pedals (if equipped) ¹
Every 1000 Hours	
<input type="checkbox"/> Drain and refill hydraulic oil and replace filter	<input type="checkbox"/> Check coolant condition
<input type="checkbox"/> Replace hydraulic oil reservoir breather	<input type="checkbox"/> Replace fuel tank breather
<input type="checkbox"/> Drain and refill chain case oil (312GR, 314G, 316GR, and 318G only)	<input type="checkbox"/> Drain and refill hydrostatic motor brake cavity oil (317G only)
Every 1500 Hours	
<input type="checkbox"/> Check and adjust engine valve lash	
Every 6000 Hours	
<input type="checkbox"/> Drain, flush, and refill cooling system	