

ENGINE	<b>230LC</b>	<b>270LC</b>
Type .....	John Deere 6068H with turbocharger and charged air cooling	John Deere 6068H with turbocharger and charged air cooling
Rated power .....	170 SAE net hp (127 kW) @ 2,100 rpm	180 SAE net hp (134 kW) @ 2,150 rpm
Cylinders .....	6	6
Displacement .....	414 cu. in. (6.8 L)	414 cu. in. (6.8 L)
Maximum net torque .....	528 lb.-ft. (716 Nm) @ 1,400 rpm	542 lb.-ft. (736 Nm) @ 1,400 rpm
Fuel consumption, typical .....	5.0 to 7.5 gal./hr. (19 to 28 L/h)	5.5 to 8.5 gal./hr. (19 to 30 L/h)
Cooling fan .....	suction-type drive	suction-type drive
Electrical system .....	24 volt with 45-amp alternator	24 volt with 45-amp alternator
Batteries (two 12 volt) .....	reserve capacity: 180 min.	reserve capacity: 180 min.
<b>HYDRAULIC SYSTEM</b>		
Main pumps .....	2 variable-displacement axial-piston closed center	2 variable-displacement axial-piston open center
Maximum flow .....	2 x 54 gpm (2 x 204 L/min.)	2 x 55 gpm (2 x 208 L/min.)
Minimum flow .....	2 x 21 gpm (2 x 80 L/min.)	2 x 23 gpm (2 x 87 L/min.)
Pilot pump .....	one gear	one gear
Maximum rated flow .....	9.0 gpm (7.5 L/min.)	9.0 gpm (7.5 L/min.)
Pressure setting .....	540 psi (3723 kPa)	540 psi (3723 kPa)
System operating pressure		
Implement circuits .....	4,980 psi (34 336 kPa)	4,980 psi (34 336 kPa)
Travel circuits .....	4,980 psi (34 336 kPa)	4,980 psi (34 336 kPa)
Swing circuits .....	4,550 psi (31 371 kPa)	4,010 psi (27 648 kPa)
Oil filtration .....	one 10-micron full-flow return filter with by-pass one pilot oil filter one suction filter	one 10-micron full-flow return filter with by-pass one pilot oil filter one suction filter
<b>CYLINDERS</b>		
Boom (2)		
Bore .....	4.9 in. (125 mm)	5.31 in. (135 mm)
Rod diameter .....	3.5 in. (90 mm)	3.74 in. (95 mm)
Stroke .....	53.15 in. (1350 mm)	52.76 in. (1340 mm)
Arm (1)		
Bore .....	5.3 in. (135 mm)	5.71 in. (145 mm)
Rod diameter .....	3.9 in. (100 mm)	3.9 in. (100 mm)
Stroke .....	63.58 in. (1615 mm)	61.22 in. (1555 mm)
Bucket (1)		
Bore .....	4.9 in. (125 mm)	5.31 in. (135 mm)
Rod diameter .....	3.3 in. (85 mm)	3.74 in. (95 mm)
Stroke .....	42.32 in. (1075 mm)	42.13 in. (1070 mm)
<b>SWING MECHANISM</b>		
Swing speed .....	0–13.5 rpm	0–10.6 rpm
Swing torque .....	49,915 lb.-ft. (6904 kg/m)	51,622 lb.-ft. (7140 kg/m)
<b>UNDERCARRIAGE</b>		
Carrier rollers (per side) .....	2	2
Track rollers (per side) .....	9	9
Idlers (per side) .....	1	1
Shoes, triple semigrouser (per side) .....	51	50
Track guides .....	front and center	front and center
Track adjustment .....	hydraulic	hydraulic
Travel speed		
Low .....	0–2.2 mph (0–3.6 km/h)	0–1.9 mph (0–3.1 km/h)
High .....	0–3.4 mph (0–5.5 km/h)	0–3.2 mph (0–5.1 km/h)
Drawbar pull .....	42,420 lb. (187 kN)	50,510 lb. (225 kN)
<b>GROUND PRESSURE DATA</b>		
Average ground pressure		
24-in. (600 mm) triple semigrouser shoes .....	6.64 psi (45.8 kPa); for rocky terrain and stumps	6.13 psi (42.3 kPa); for rocky terrain and stumps
28-in. (700 mm) triple semigrouser shoes .....	5.79 psi (39.9 kPa); for general/soft terrain	
32-in. (800 mm) triple semigrouser shoes .....	5.13 psi (35.4 kPa); for extremely soft terrain	4.76 psi (32.8 kPa); for extremely soft terrain
<b>CAPACITIES</b>		
Fuel tank .....	82 gal. (310 L)	82 gal. (310 L)
Cooling system .....	24 qt. (22 L)	24 qt. (22 L)
Engine lubrication, including filter .....	5 gal. (19 L)	5 gal. (19 L)
Hydraulic system .....	71 gal. (270 L)	71 gal. (270 L)
Planetary propel drive (each) .....	6.5 qt. (6 L)	6.5 qt. (6 L)
Swing drive .....	14 qt. (13 L)	14 qt. (13 L)
Hydraulic tank .....	39 gal. (148 L)	39 gal. (148 L)
<b>OPERATING WEIGHTS</b>		
With full fuel tank, 175-lb. (79 kg) operator, and 32-in. (800 mm) triple grouser shoes		
With 42-in. (1065 mm) 1.38-cu. yd. (1.06 m <sup>3</sup> ) bucket, 11-ft. 10-in. (3.61 m) arm, and 11,265-lb. (5110 kg) counterweight .....	52,410 lb. (23 773 kg)	

**OPERATING WEIGHTS (continued)**

**230LC**

**270LC**

With 42-in. (1065 mm) 1.75-cu. yd. (1.34 m <sup>3</sup> ) bucket, 12-ft. 4-in. (3.75 m) arm, and 12,590-lb. (5710 kg) counterweight.....	60,660 lb. (27 515 kg)
--	------------------------

**COMPONENT WEIGHTS**

Upperstructure with full fuel tank (less front attachments) Less boom lift cylinders (2) and 11,265-lb. (5110 kg) counterweight.....	11,760 lb. (5334 kg)
Less boom lift cylinders (2) and 12,590-lb. (5710 kg) counterweight .....	11,870 lb. (5384 kg)
Undercarriage equipped with	
24-in. (600 mm) triple grouser shoes.....	17,520 lb. (7947 kg)
28-in. (700 mm) triple grouser shoes.....	18,465 lb. (8376 kg)
32-in. (800 mm) triple grouser shoes.....	19,100 lb. (8664 kg)
One-piece boom (with arm cylinder).....	4,340 lb. (1969 kg)
Arm with bucket cylinder and linkage	
7 ft. 7 in. (2.32 m) .....	2,600 lb. (1179 kg)
9 ft. 9 in. (2.96 m) .....	2,740 lb. (1243 kg)
11 ft. 10 in. (3.61 m) .....	3,025 lb. (1372 kg)
10 ft. 1 in. (3.1 m) .....	3,060 lb. (1388 kg)
12 ft. 4 in. (3.75 m) .....	3,240 lb. (1469 kg)
Counterweight .....	11,265 lb. (5110 kg)
Boom lift cylinders (2) total weight .....	960 lb. (435 kg)
Buckets	
42-in. (1065 mm) 1.38-cu. yd. (1.06 m <sup>3</sup> ) general purpose .....	1,785 lb. (810 kg)
42-in. (1065 mm) 1.75-cu. yd. (1.34 m <sup>3</sup> ) heavy duty .....	1,966 lb. (892 kg)

**230LC OPERATING INFORMATION**

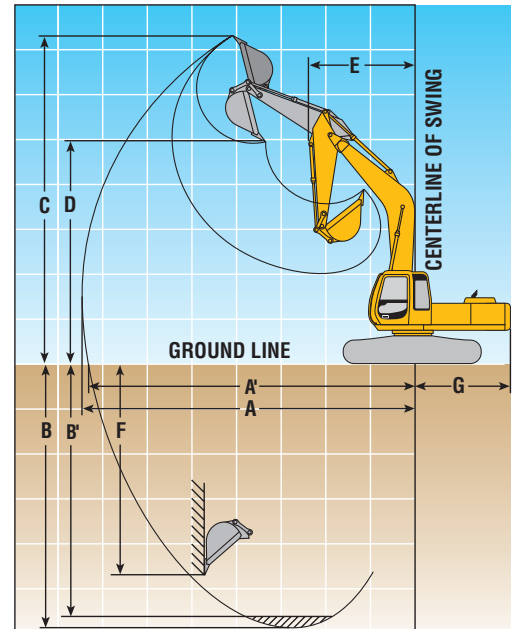
	Arm Length 7 ft. 7 in. (2.32 m)	Arm Length 9 ft. 9 in. (2.96 m)	Arm Length 11 ft. 10 in. (3.61 m)
Arm force with 42-in. (1065 mm) general-purpose bucket* .....	32,300 lb. (143 kN)	25,705 lb. (112 kN)	22,265 lb. (99 kN)
Bucket tangential force with 42-in. (1065 mm) 1.38-cu. yd. (1.06 m <sup>3</sup> ) general-purpose bucket* .....	34,820 lb. (155 kN)	34,820 lb. (155 kN)	34,820 lb. (155 kN)
Lifting capacity over front @ ground			
level 20-ft. (6.1 m) reach* .....	18,320 lb. (8310 kg)	17,530 lb. (7950 kg)	16,490 lb. (7480 kg)
<b>A</b> Max. reach .....	31 ft. 8 in. (9.60 m)	33 ft. 4 in. (10.16 m)	35 ft. 5 in. (10.79 m)
<b>A'</b> Max. reach @ ground level .....	14 ft. 7 in. (9.42 m)	32 ft. 9 in. (9.99 m)	34 ft. 10 in. (10.62 m)
<b>B</b> Max. digging depth .....	20 ft. 4 in. (6.19 m)	22 ft. 5 in. (6.84 m)	24 ft. 6 in. (7.48 m)
<b>B'</b> Max. digging depth @ 8-ft. (2.44 m) flat bottom .....	19 ft. 7 in. (5.96 m)	21 ft. 9 in. (6.63 m)	24 ft. (7.32 m)
<b>C</b> Max. cutting height .....	30 ft. 10 in. (9.41 m)	31 ft. 7 in. (9.63 m)	32 ft. 9 in. (9.99 m)
<b>D</b> Max. dumping height.....	21 ft. 5 in. (6.54 m)	22 ft. 2 in. (6.76 m)	23 ft. 4 in. (7.10 m)
<b>E</b> Min. swing radius .....	13 ft. (3.96 m)	12 ft. 8 in. (3.87 m)	12 ft. 9 in. (3.89 m)
<b>F</b> Max. vertical wall.....	17 ft. 4 in. (5.29 m)	19 ft. 5 in. (5.91 m)	21 ft. 9 in. (6.63 m)
<b>G</b> Tail swing radius.....	9 ft. 8 in. (2.94 m)	9 ft. 8 in. (2.94 m)	9 ft. 8 in. (2.94 m)

\*Maximum digging force with Power Boost.

**270LC OPERATING INFORMATION**

	Arm Length 10 ft. 1 in. (3.1 m)	Arm Length 12 ft. 4 in. (3.75 m)
Arm force with 42-in. (1065 mm) heavy-duty bucket* .....	26,055 lb. (116 kN)	22,810 lb. (101 kN)
Bucket tangential force with 42-in. (1065 mm) 1.75-cu. yd. (1.34 m <sup>3</sup> ) heavy-duty bucket* .....	37,470 lb. (167 kN)	37,470 lb. (167 kN)
Lifting capacity over front @ ground		
level 20-ft. (6.1 m) reach* .....	20,620 lb. (9353 kg)	19,540 lb. (8863 kg)
<b>A</b> Max. reach .....	35 ft. 2 in. (10.71 m)	37 ft. 1 in. (11.30 m)
<b>A'</b> Max. reach @ ground level .....	34 ft. 6 in. (10.52 m)	36 ft. 6 in. (11.12 m)
<b>B</b> Max. digging depth .....	23 ft. 9 in. (7.23 m)	25 ft. 10 in. (7.88 m)
<b>B'</b> Max. digging depth @ 8-ft. (2.44 m) flat bottom .....	23 ft. 2 in. (7.05 m)	25 ft. 8 in. (7.72 m)
<b>C</b> Max. cutting height .....	32 ft. 9 in. (9.98 m)	33 ft. 7 in. (10.24 m)
<b>D</b> Max. dumping height.....	23 ft. 2 in. (7.07 m)	24 ft. 1 in. (7.33 m)
<b>E</b> Min. swing radius .....	13 ft. 7 in. (4.14 m)	13 ft. 6 in. (4.12 m)
<b>F</b> Max. vertical wall.....	20 ft. 1 in. (6.11 m)	22 ft. 3 in. (6.77 m)
<b>G</b> Tail swing radius.....	9 ft. 8 in. (2.94 m)	9 ft. 8 in. (2.94 m)

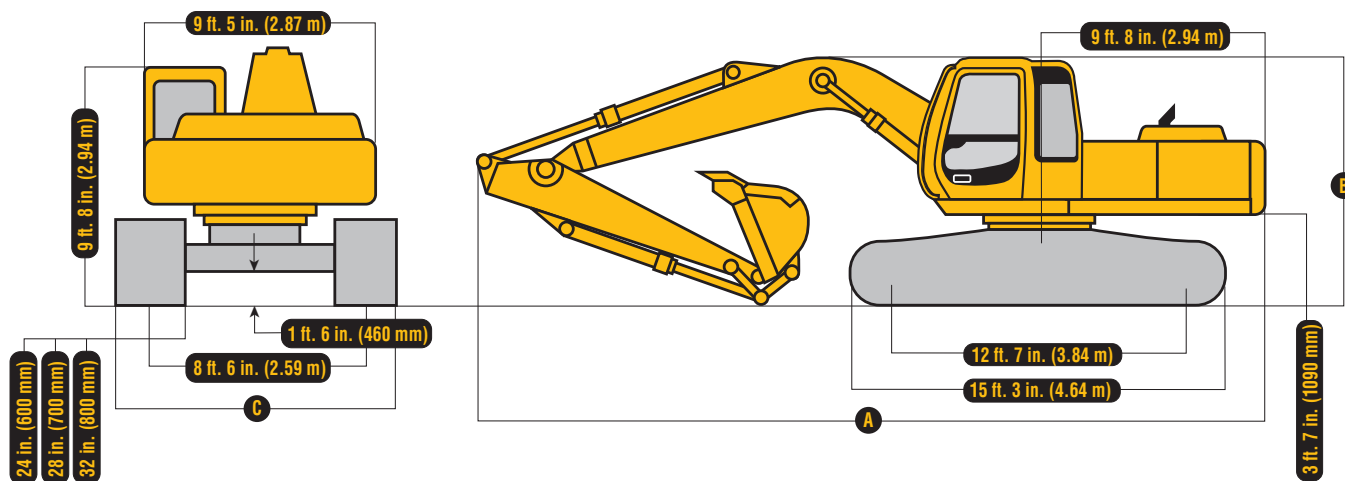
\*Maximum digging force with Power Boost.



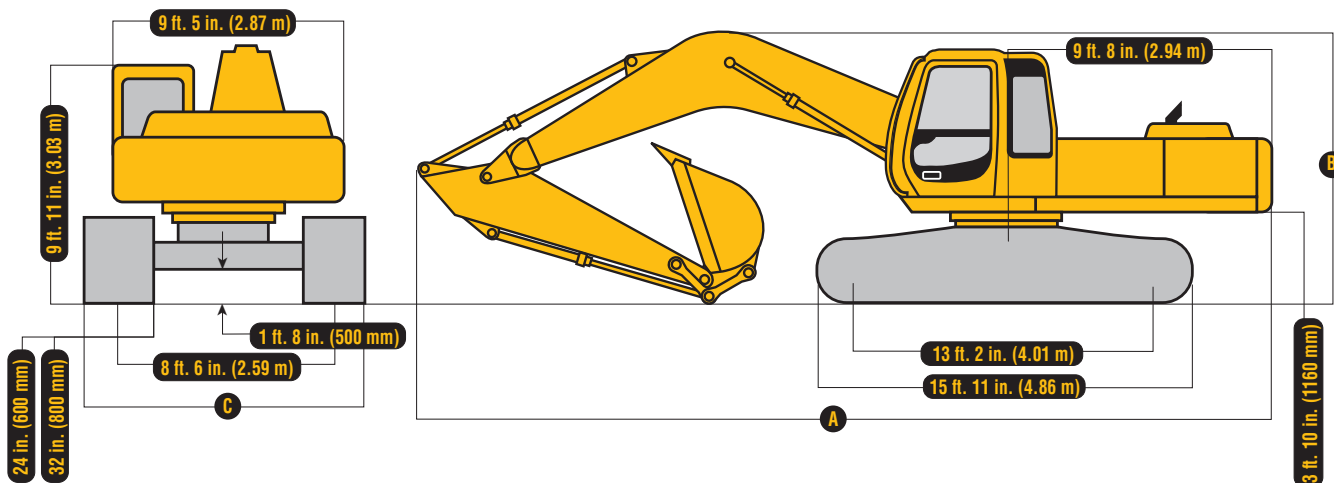
## DIMENSIONS

		<b>230LC</b>		<b>270LC</b>
<b>A</b>	With 7-ft. 7-in. (2.32 m) arm.....	33 ft. 8 in. (10.26 m)		
	With 9-ft. 9-in. (2.96 m) arm.....	33 ft. 3 in. (10.14 m)		
	With 11-ft. 10-in. (3.61 m) arm.....	33 ft. 6 in. (10.20 m)		
	With 10-ft. 1-in. (3.10 m) arm.....		33 ft. 9 in. (10.29 m)	
	With 12-ft. 4-in. (3.75 m) arm.....		33 ft. 10 in. (10.31 m)	
<b>B</b>	With 7-ft. 7-in. (2.32 m) arm.....	10 ft. 10 in. (3.29 m)		
	With 9-ft. 9-in. (2.96 m) arm.....	10 ft. 2 in. (3.10 m)		
	With 11-ft. 10-in. (3.61 m) arm.....	10 ft. 11 in. (3.32 m)		
	With 10-ft. 1-in. (3.10 m) arm.....		10 ft. 5 in. (3.17 m)	
	With 12-ft. 4-in. (3.75 m) arm.....		12 ft. (3.35 m)	
<b>C</b>	With 24-in. (600 mm) shoes.....	10 ft. 6 in. (3.19 m)		10 ft. 6 in. (3.19 m)
	With 28-in. (700 mm) shoes.....	10 ft. 10 in. (3.29 m)		
	With 32-in. (800 mm) shoes.....	11 ft. 1 in. (3.39 m)		11 ft. 1 in. (3.39 m)

### 230LC EXCAVATOR



### 270LC EXCAVATOR



## 230LC LIFT CAPACITIES

**Boldface italic** type indicates hydraulic-limited capacities with Power Boost on; lightface type indicates stability-limited capacities, in lb. (kg). Ratings at bucket lift hook, machine equipped with 1.38-cu. yd. (1.06 m<sup>3</sup>) 42-in. (1065 mm) wide, 1,785-lb. (810 kg) bucket; and situated on firm, uniform supporting surface. Total load includes weight of cables, hook, etc. Figures do not exceed 87 percent of hydraulic capacities or 75 percent of weight needed to tip machine.

Load Point Height	10 ft. (3.05 m)		15 ft. (4.57 m)		20 ft. (6.10 m)		25 ft. (7.62 m)		30 ft. (9.14 m)	
	Over Front	Over Side	Over Front	Over Side	Over Front	Over Side	Over Front	Over Side	Over Front	Over Side
<i>With 24-in. (600 mm) shoes and 7-ft. 7-in. (2.32 m) arm</i>										
20 ft. (6.10 m)					<b>10,492 (4721)</b>	<b>10,492 (4721)</b>				
15 ft. (4.57 m)					<b>11,770 (5297)</b>	<b>11,770 (5297)</b>	<b>10,974 (4938)</b>	8,246 (3711)		
10 ft. (3.05 m)					<b>14,133 (6360)</b>	11,642 (5239)	<b>11,920 (5364)</b>	7,985 (3593)		
5 ft. (1.52 m)					<b>16,639 (7488)</b>	10,927 (4917)	12,253 (5514)	7,653 (3444)		
Ground Line					17,099 (7695)	10,454 (4704)	11,964 (5384)	7,390 (3326)		
-5 ft. (-1.52 m)			<b>25,546 (11 496)</b>	16,192 (7286)	16,903 (7606)	10,280 (4626)	11,841 (5328)	7,277 (3275)		
-10 ft. (-3.05 m)	<b>22,547 (10 146)</b>	<b>22,547 (10 146)</b>	<b>23,661 (10 647)</b>	16,437 (7397)	<b>17,842 (8029)</b>	10,365 (4664)				
-15 ft. (-4.57 m)			<b>19,693 (8862)</b>	16,960 (7632)	<b>14,382 (6472)</b>	10,785 (4853)				





**270LC BUCKETS**

A full line of buckets is offered to meet a wide variety of applications. The buckets have an adjustable bushing for side clearance, with the exception of the ditching bucket. Tooth selection includes either the John Deere Fanggs®, Standard, Tiger, Twin Tiger, Abrasion panel, or Flare tooth, or the ESCO (Vertalok) Standard, Tiger, Twin Tiger, or Flare tooth. Replaceable cutting edges are available through John Deere parts. Optional side cutters add 6 inches (150 mm) to bucket widths.

Type Bucket	Bucket Width		Bucket Capacity*		Weight		Bucket Dig Force		Arm Dig Force 10 ft. 2 in. (3.10 m)		Arm Dig Force 12 ft. 4 in. (3.75 m)		Bucket Tip Radius		No. Teeth
	in.	mm	cu. yd.	m <sup>3</sup>	lb.	kg	lb.	kN	lb.	kN	lb.	kN	in.	mm	
General-Purpose	24	600	0.95	0.73	1,453	659	33,500	149.2	24,700	110.0	21,600	96.0	62.5	1588	3
Plate Lip	30	750	1.20	0.92	1,731	785	33,500	149.2	24,700	110.0	21,600	96.0	62.5	1588	4
	36	900	1.48	1.13	1,845	836	33,500	149.2	24,700	110.0	21,600	96.0	62.5	1588	5
	42	1065	1.38	1.06	1,785	809	37,059	165.1	25,530	113.7	22,234	99.0	56.5	1435	5
	42	1065	1.75	1.34	1,966	891	33,500	149.2	24,700	110.0	21,600	96.0	62.5	1588	5
	48	1220	2.03	1.55	2,068	938	33,500	149.2	24,700	110.0	21,600	96.0	62.5	1588	6
Heavy-Duty	30	750	0.95	0.73	1,930	876	37,059	165.1	25,530	113.7	22,234	99.0	56.5	1435	4
Plate Lip	36	900	1.16	0.89	2,075	942	37,059	165.1	25,530	113.7	22,234	99.0	56.5	1435	5
	42	1065	1.38	1.06	2,195	997	37,059	165.1	25,530	113.7	22,234	99.0	56.5	1435	5
	48	1220	1.60	1.22	2,359	1071	37,059	165.1	25,530	113.7	22,234	99.0	56.5	1435	6
	54	1370	1.82	1.39	2,507	1138	37,059	165.1	25,530	113.7	22,234	99.0	56.5	1435	7
	High Capacity	24	600	0.92	0.70	1,765	800	33,500	149.2	24,700	110.0	21,600	96.0	62.5	1588
Severe-Duty	30	750	1.20	0.92	2,010	911	33,500	149.2	24,700	110.0	21,600	96.0	62.5	1588	4
	36	900	1.48	1.13	2,133	967	33,500	149.2	24,700	110.0	21,600	96.0	62.5	1588	4
	42	1065	1.75	1.34	2,279	1033	33,500	149.2	24,700	110.0	21,600	96.0	62.5	1588	5
Cast Lip	36	900	1.16	0.89	1,921	871	38,420	171.1	25,820	115.0	22,453	100.0	54.5	1384	5
	42	1065	1.38	1.06	2,119	961	38,420	171.1	25,820	115.0	22,453	100.0	54.5	1384	6
Plate Lip	30	750	0.95	0.73	2,080	943	37,059	165.1	25,530	113.7	22,234	99.0	56.5	1435	4
	36	900	1.16	0.89	2,179	988	37,059	165.1	25,530	113.7	22,234	99.0	56.5	1435	4
	42	1065	1.38	1.06	2,345	1063	37,059	165.1	25,530	113.7	22,234	99.0	56.5	1435	5
Ditching	60	1500	1.34	1.02	1,562	708	44,552	198.4	26,965	120.1	23,317	103.9	47.0	1194	0
	72	1800	1.66	1.27	1,759	797	44,552	198.4	26,965	120.1	23,317	103.9	47.0	1194	0

\*All capacities are SAE heaped ratings.

**BUCKET SELECTION CHART**

**230LC**

**270LC**

	General-Purpose Bucket*	Heavy-Duty Bucket*	General-Purpose Bucket*	Heavy-Duty Bucket*
Material (loose weight)				
Wood chips – 700 lb./cu. yd. (420 kg/m <sup>3</sup> )	7.0 cu. yd. (5.4 m <sup>3</sup> )	—	8.0 cu. yd. (6.2 m <sup>3</sup> )	—
Peat, dry – 750 lb./cu. yd. (440 kg/m <sup>3</sup> )	6.0 cu. yd. (4.6 m <sup>3</sup> )	—	7.0 cu. yd. (5.4 m <sup>3</sup> )	—
Cinders – 950 lb./cu. yd. (560 kg/m <sup>3</sup> )	4.25 cu. yd. (3.2 m <sup>3</sup> )	—	5.0 cu. yd. (3.9 m <sup>3</sup> )	—
Peat, wet – 1,170 lb./cu. yd. (690 kg/m <sup>3</sup> )	3.75 cu. yd. (2.9 m <sup>3</sup> )	—	4.5 cu. yd. (3.5 m <sup>3</sup> )	—
Topsoil – 1,600 lb./cu. yd. (950 kg/m <sup>3</sup> )	2.5 cu. yd. (1.9 m <sup>3</sup> )	—	3.25 cu. yd. (2.5 m <sup>3</sup> )	—
Coal – 1,780 lb./cu. yd. (1050 kg/m <sup>3</sup> )	2.5 cu. yd. (1.9 m <sup>3</sup> )	—	3.25 cu. yd. (2.5 m <sup>3</sup> )	—
Caliche – 2,100 lb./cu. yd. (1250 kg/m <sup>3</sup> )	1.25–1.75 cu. yd. (1.0–1.3 m <sup>3</sup> )	1.13–1.5 cu. yd. (0.9–1.1 m <sup>3</sup> )	1.5–2.0 cu. yd. (1.2–1.5 m <sup>3</sup> )	1.25–2.0 cu. yd. (1.0–1.5 m <sup>3</sup> )
Earth, loam – 2,100 lb./cu. yd. (1250 kg/m <sup>3</sup> )	1.75 cu. yd. (1.3 m <sup>3</sup> )	1.5 cu. yd. (1.1 m <sup>3</sup> )	2.25 cu. yd. (1.7 m <sup>3</sup> )	2.0 cu. yd. (1.5 m <sup>3</sup> )
Shale – 2,250 lb./cu. yd. (1330 kg/m <sup>3</sup> )	1.75 cu. yd. (1.3 m <sup>3</sup> )	1.5 cu. yd. (1.1 m <sup>3</sup> )	2.25 cu. yd. (1.7 m <sup>3</sup> )	2.0 cu. yd. (1.5 m <sup>3</sup> )
Sand, dry – 2,400 lb./cu. yd. (1420 kg/m <sup>3</sup> )	1.75 cu. yd. (1.3 m <sup>3</sup> )	1.5 cu. yd. (1.1 m <sup>3</sup> )	2.25 cu. yd. (1.7 m <sup>3</sup> )	2.0 cu. yd. (1.5 m <sup>3</sup> )
Clay, dry – 2,500 lb./cu. yd. (1480 kg/m <sup>3</sup> )	1.25–1.75 cu. yd. (1.0–1.3 m <sup>3</sup> )	1.38 cu. yd. (1.1 m <sup>3</sup> )	1.5–2.0 cu. yd. (1.2–1.5 m <sup>3</sup> )	1.75 cu. yd. (1.3 m <sup>3</sup> )
Earth, dry – 2,550 lb./cu. yd. (1510 kg/m <sup>3</sup> )	1.25–1.63 cu. yd. (1.0–1.2 m <sup>3</sup> )	1.38 cu. yd. (1.1 m <sup>3</sup> )	1.5–2.0 cu. yd. (1.2–1.5 m <sup>3</sup> )	1.75 cu. yd. (1.3 m <sup>3</sup> )
Limestone, broken or crushed – 2,600 lb./cu. yd. (1540 kg/m <sup>3</sup> )	1.13–1.63 cu. yd. (0.9–1.2 m <sup>3</sup> )	1.0–1.38 cu. yd. (0.8–1.0 m <sup>3</sup> )	1.5–2.0 cu. yd. (1.2–1.5 m <sup>3</sup> )	1.38–1.75 cu. yd. (1.1–1.3 m <sup>3</sup> )
Earth, wet – 2,700 lb./cu. yd. (1600 kg/m <sup>3</sup> )	1.75 cu. yd. (1.3 m <sup>3</sup> )	1.63 cu. yd. (1.2 m <sup>3</sup> )	2.0 cu. yd. (1.5 m <sup>3</sup> )	1.75 cu. yd. (1.3 m <sup>3</sup> )
Clay, wet – 2,800 lb./cu. yd. (1660 kg/m <sup>3</sup> )	1.63 cu. yd. (1.2 m <sup>3</sup> )	1.5 cu. yd. (1.1 m <sup>3</sup> )	2.0 cu. yd. (1.5 m <sup>3</sup> )	1.75 cu. yd. (1.3 m <sup>3</sup> )
Rock, granite, blasted and broken – 2,800 lb./cu. yd. (1660 kg/m <sup>3</sup> )	1.5–1.75 cu. yd. (1.1–1.3 m <sup>3</sup> )	1.25–1.5 cu. yd. (1.0–1.1 m <sup>3</sup> )	1.75–2.0 cu. yd. (1.3–1.5 m <sup>3</sup> )	1.5–1.75 cu. yd. (1.2–1.3 m <sup>3</sup> )
Sand, moist – 2,850 lb./cu. yd. (1690 kg/m <sup>3</sup> )	1.63 cu. yd. (1.2 m <sup>3</sup> )	1.5 cu. yd. (1.1 m <sup>3</sup> )	2.0 cu. yd. (1.5 m <sup>3</sup> )	1.75 cu. yd. (1.3 m <sup>3</sup> )
Sand and gravel, dry – 2,900 lb./cu. yd. (1720 kg/m <sup>3</sup> )	1.63 cu. yd. (1.2 m <sup>3</sup> )	1.5 cu. yd. (1.1 m <sup>3</sup> )	2.0 cu. yd. (1.5 m <sup>3</sup> )	1.75 cu. yd. (1.3 m <sup>3</sup> )
Sand, wet – 3,100 lb./cu. yd. (1840 kg/m <sup>3</sup> )	1.5 cu. yd. (1.1 m <sup>3</sup> )	1.38 cu. yd. (1.0 m <sup>3</sup> )	1.75 cu. yd. (1.3 m <sup>3</sup> )	1.63 cu. yd. (1.2 m <sup>3</sup> )
Sand and gravel, wet – 3,400 lb./cu. yd. (2020 kg/m <sup>3</sup> )	1.5 cu. yd. (1.1 m <sup>3</sup> )	1.38 cu. yd. (1.0 m <sup>3</sup> )	1.75 cu. yd. (1.3 m <sup>3</sup> )	1.63 cu. yd. (1.2 m <sup>3</sup> )

\*Contact your John Deere dealer for optimum bucket and attachment selections. These recommendations are for general conditions and average use. Larger buckets may be possible for flat and level operations, less compacted materials, and volume loading applications such as mass excavation applications in ideal conditions. Smaller buckets are recommended for adverse conditions such as off-level applications and uneven surfaces. Bucket capacity indicated is SAE heaped.

	230LC	270LC		230LC	270LC		230LC	270LC
<b>ENGINE</b>			<b>FRONT ATTACHMENTS</b>					
Auto-idle system	●	●	Bucket-to-arm clearance adjustable bushing (except ditching bucket)	●	●	Hydraulic shutoff lever, all controls	●	●
Automatic belt tension device	●	●	Centralized lubrication system	●	●	Hydraulic warm-up control	●	●
Batteries (two 12 volt), 180-min. reserve capacity	●	●	Dirt seals on all bucket pins	●	●	Interior light	●	●
Coolant recovery tank	●	●	No-boom-arm option	●	●	Mode selectors (illuminated)	●	●
Dual element dry-type air filter	●	●	Arm, 7 ft. 7 in. (2.32 m)	■	■	Power modes – four	●	●
Enclosed fan guard	●	●	Arm, 9 ft. 9 in. (2.96 m)	■	■	Travel modes – two with automatic shift	●	●
Conforms to SAE J1308			Arm, 10 ft. 2 in. (3.10 m)			Work modes – four	●	●
Engine coolant to -34°F (-37°C)	●	●	Arm, 11 ft. 10 in. (3.61 m)	■	■	Monitor system with alarm features	●	●
Fuel/water separator	●	●	Arm, 12 ft. 4 in. (3.75 m)	■	■	Auto-idle indicator light	●	●
Full-flow oil filter	●	●	Attachment quick couplers	■	■	Engine air cleaner restriction indicator light	●	●
Isolation mounted	●	●	Boom cylinder with plumbing to mainframe for no-boom-arm option	■	■	Engine coolant temperature indicator light with audible alarm	●	●
John Deere vertical spin-on fuel filter	●	●	Bucket			Engine oil pressure indicator light with audible alarm	●	●
Key start switch with electric fuel shutoff	●	●	Ditching	■	■	Fluid level		
Oil-to-coolant engine oil cooler	●	●	General purpose	■	■	Engine coolant level indicator light	●	●
Radiator trash screen	●	●	General purpose, high capacity	■	■	Engine oil level indicator light	●	●
Turbocharger air cooler	●	●	Heavy duty	■	■	Hydraulic oil level indicator light	●	●
Underhood muffler with vertical curved end exhaust stack	●	●	Heavy duty, high capacity	■	■	Low alternator charge indicator light	●	●
Electric ether starting aid	■	■	Severe duty, cast lip	■	■	Low fuel indicator light	●	●
Engine coolant heater	■	■	Severe duty, plate lip	■	■	Hydraulic oil filter restriction indicator light	■	■
			Side cutters and teeth	■	■			
<b>HYDRAULIC SYSTEM</b>			Laser depth systems	■	■	Motion alarm with cancel switch	●	●
Anti-drift valve for boom down, arm in	●	●	Material clamps	■	■	Conforms to SAE J994		
Auxiliary hydraulic valve section	●	●	Super-long fronts	■	■	Power boost switch on right control lever	●	●
Spring-applied, hydraulically released automatic swing brake	●	●				Propel pedals and levers	●	●
Auxiliary hydraulic lines	■	■	<b>OPERATOR'S STATION</b>			SAE two lever control pattern	●	●
Auxiliary pilot and electric controls	■	■	Adjustable independent control positions (levers-to-seat, seat-to-pedals)	●	●	Seat belt, 2 in. (51 mm)	●	●
Hydraulic filter restriction indicator kit	■	■	AM/FM radio	●	●	Seat belt, 3 in. (76 mm)	■	■
Load-lowering control device	■	■	Built-in Operator's Manual storage compartment and manual	●	●	Sound suppression	●	●
Single-pedal propel control	■	■	Coat hook	●	●	Tinted glass	●	●
			Deluxe suspension cloth seat with adjustable armrests	●	●	24- to 12-volt D.C. radio converters	■	■
<b>UNDERCARRIAGE</b>			Floor mat	●	●	Air conditioning	■	■
Planetary drive	●	●	Front windshield wiper with intermittent speeds	●	●	Alternate pilot control pattern	■	■
Propel motor shields	●	●	Gauges (illuminated)			Defroster fan	■	■
Track guides, front idler and center	●	■	Engine coolant	●	●	Window vandal protection covers	■	■
Triple semi-grouser shoes, 24 in. (600 mm)	●	■	Fuel	●	●			
Triple semi-grouser shoes, 28 in. (700 mm)	■	■	Heater, 20,000 Btu/hr. (5.9 kW) with blower fan	●	●	<b>ELECTRICAL</b>		
Triple semi-grouser shoes, 32 in. (800 mm)	■	■	Hinged roof panel	●	●	Blade-type multi-fused circuits	●	●
Two-speed propel with automatic shift	●	●	Horn, electric	●	●	By-pass start safety cover on starter	●	●
Upper carrier rollers (2)	●	●	Hourmeter, electric	●	●	Positive terminal battery covers	●	●
<b>UPPERSTRUCTURE</b>						<b>LIGHTS</b>		
Right- and left-hand mirrors	●	●				Work lights		
Vandal locks with ignition key	●	●				Halogen, 33,000 candlepower (375,757 lux)	●	●
Cab door	●	●				One mounted on boom	●	●
Fuel cap	●	●				One mounted on frame	●	●
Service doors	●	●						

**KEY:** ● Standard equipment ■ Optional or special equipment

See your John Deere dealer for further information.

## THE JDAdvantEDGE

JDAdvantEdge is a wealth of support programs, parts systems, and dealer resources, all designed to give you the edge. This package of special benefits is a major reason why John Deere offers the "best value" for your equipment dollar.

**Best parts support** – Twelve regional parts depots in North America and others around the world put parts support near your job no matter where in the world it is.

A computerized FLASH™ parts locating system linking these depots to dealerships can find out-of-stock parts in a hurry and get them into your hands fast ... usually within 24 hours.

**Best service backup** – Dealer service technicians are regularly schooled, at our modern facility in Davenport, Iowa, or by professionals in the field, to diagnose quickly and repair efficiently.

If they're stumped, a phone call to DTAC (Dealer Technical Assistance Center) puts them in touch with a staff of pros at the factory who help them find a solution quickly.

**Best dealers** – Your John Deere dealer is an important contributor to the JDAdvantEdge. He or she is committed to being the best equipment supplier you can work with.

This is a dollars-and-cents commitment in parts inventory, in service facilities, in field-service trucks. It's a sweat-and-blood commitment in dedicated, skilled, and highly trained and motivated personnel in each and every department at the dealership.

But what sets John Deere dealers apart from all the rest is something more, a factor somewhat difficult to measure ... a caring attitude, and a sincere desire to be the best at meeting the needs of each individual customer.

**John Deere Finance Plans** – Whether you rent, lease, or buy John Deere equipment, your dealer can explain the John Deere options available. One-stop options that let you free up operating capital, keep other lines of credit open. More solid benefits of the JDAdvantEdge.

**Best protection** – In addition to the new equipment warranty that meets or exceeds the competition, SECURE® extended coverage, an optional service product for John Deere equipment, is available for repair coverage after the warranty concludes. Full machine or power train coverage is available for a variety of time periods to meet your needs. Consult your dealer for availability and details.



Net engine power is with standard equipment including air cleaner, exhaust system, alternator, and cooling fan, at standard conditions per SAE J1349 and DIN 6270B, using No. 2-D fuel at 35 API gravity. No derating is required up to 10,000 ft. (3050 m) altitude. Gross power is without cooling fan.

Specifications and design subject to change without notice. Wherever applicable, specifications are in accordance with PCSA and SAE standards. Except where otherwise noted, these specifications are based on units with 32-in. (800 mm) triple grouser shoes, full fuel tank, and 175-lb. (79 kg) operator; a 230LC unit with 11-ft. 10-in. (3.61 m) arm and 42-in. (1065 mm) 1.38-cu. yd. (1.06 m³) bucket; and a 270LC unit with 12-ft. 4-in. (3.75 m) arm and 42-in. (1065 mm) 1.75-cu. yd. (1.34 m³) bucket.

