



JOHN DEERE

FORESTRY EQUIPMENT

JH

HARVESTERS

853JH | 903JH | 909JH



The heavyweight champion of the woods.

With a large body and signature Deere power, plug-and-play Waratah heads for all forest conditions, and factory-installed Waratah TimberRite™ measuring system, the John Deere 8/900JH-Series Tracked Harvesters are ready to take on just about anything. These rugged, industry-exclusive harvesters knock out stump-to-stump operations. And they optimize your harvested wood value per hectare through an unmatched combination of Deere performance, Waratah productivity, and TimberRite precision.





With a dedicated harvester boom that provides 52 percent more cutting swath than a converted feller buncher model, these large harvesters maximize cutting time and, in turn, increase your overall productivity.

The load-sensing hydraulic system, combined with the “smart” TimberRite measuring system for precise applications, translates into superior performance and reliability.

The streamlined and accessible hydraulic system minimizes service and maintenance headaches and corresponding operating costs, thereby maximizing your uptime and bottom line.

Each fully integrated harvester is Waratah-ready for “plug-and-play” Waratah heads, ensuring consistent installation and factory support.

853JH

903JH

909JH

Engine Power

John Deere 6081H Tier II Rated
294 peak hp (219 kW)

John Deere 6081H Tier II Rated
294 peak hp (219 kW)

John Deere 6081H Tier II Rated
294 peak hp (219 kW)

Reach (To Attachment Pin)

29 ft. 0 in. (8.90 m)

29 ft. 0 in. (8.90 m)

29 ft. 0 in. (8.90 m)

Operating Weight (Without Attachment)
Single Grouser 24 in. (610 mm)

60,530 lb. (27 450 kg)

65,720 lb. (29 810 kg)

77,840 lb. (35 300 kg)

Maximum Tractive Effort

55,700 lbf (248 kN)

74,300 lbf (331 kN)

74,300 lbf (331 kN)

Best Applications

Thinning, regeneration

Thinning, regeneration

Thinning, regeneration and
steep ground

Waratah Head Model

HTH622B/624C

HTH622B/624C

HTH622B/624C

1 **Hydraulic system:** With a faster hydraulic system, the multifunctioning 8/900 JH-Series machines reign supreme. The system's inherent design, which allows you to prioritize hydraulic flow where you need it, gives you power on the spot, so you can bump up both production and precision. And, because they run cool, your efficient hydraulic pumps will work longer per shift, all the while promising an extended machine life.

2 **Cooling fan:** The TMC™-controlled variable-speed cooling fan system also helps keep the machine cooler and cleaner as it effectively clears debris that otherwise could block important airflow.

3 **Swing torque:** With dual-swing motors providing 73,200 lbf swing torque, you will easily maneuver the felled tree to position it for processing.

4 **Cutting swath:** The total swath is 52 percent more than that of a converted feller buncher, allowing operators to strategize and maximize cuts between each repositioning.

5 **Waratah head attachments:** Several top-of-the-line Waratah head options, with integrated plug-and-play wiring and plumbing on the carrier, are available to broaden your operational capabilities.



Plenty of power — and the brains to know how to use it.

This powerful operator is also cool and smooth. The integrated hydraulic system delivers efficient and reliable power to the head when you need it for targeted delimiting pressure and feed speed, without lessening power to other areas. Cool, smooth running across the board gives these machines longer component life. And with its fully integrated TimberRite measuring system and Waratah attachment readiness, the 8/900JH-Series machines enable you to take advantage of all of that power.



A state-of-the-art cab, fit for a champion.

The cab of this workhorse is impressively outfitted for both high-tech productivity and enviable comfort. It is welcoming and spacious, as well as efficiently arranged for maximum productivity. Isolation mountings facilitate a smoother and quieter ride, making loggers appreciate the inside of this harvester as much as the power it delivers at their fingertips. This cab is worthy of the powerful carrier it complements.



AM/FM radio and standard air conditioning deliver the utmost in operator comfort.

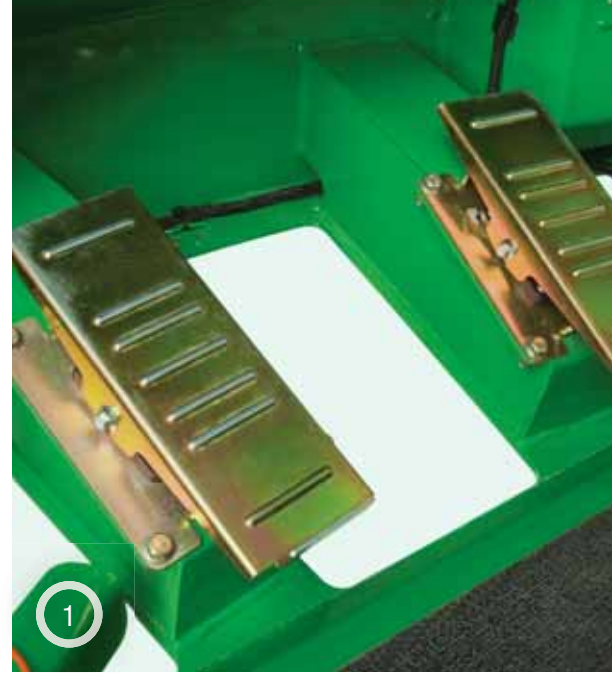
Operator-accessible storage areas behind the seat and on the door come in handy.

Tinted polycarbonate windows with a large skylight translate into better operator visibility, which is paramount for increased productivity per work shift.

TMC™ monitor is backlit, allowing operators to quickly and accurately check engine coolant temp, fuel levels, hydraulic oil temps, the tachometer, and more.

Operators will love the quieter, smoother, and more comfortable ride enabled by isolation mountings.

A fully adjustable suspension seat, armrests and backrest, easily accessible pedals and levers, and strategically located joysticks round out the elite cab's features.



1 Foot pedals: Operators will notice the stepped-up “heel-toe” control enabled by the pedals’ refined shape and tension controls.

2 Controls: User-friendly controls are enhanced by fully featured, backlit indicator lights.

3 Cooling fan: Remote-mounted, TMC-controlled variable-speed cooling fan reduces fuel consumption and offers a full reversing fan that blows out debris for better airflow.



Features you won't find anywhere else.

All JH-Series Harvesters boast the factory-installed Waratah TimberRite measuring system and Waratah-ready wiring for unmatched reliability.

It's not a Waratah attachment unless it is durable, reliable, and precise — signature qualities that allow you to optimize your harvesting productivity and uptime.

The John Deere carrier and Waratah head team has risen to the top of the industry after extensive and meticulous testing to ensure compatibility and reliability in even extreme, rigorous environments.

The machine's hydraulic system delivers greater power and efficient flow (greater than 100 gpm) to the attachment, enabling more strategic and effective grabbing pressure and faster speed.

A natural and powerful team.

Nothing beats the Deere-Waratah team. Deere's powerhouse reputation and Waratah's "built to work" assurance create the perfect carrier-head combination for your stump-to-stump harvesting operations. With a hydraulic system designed specifically for Waratah heads, the 8/900 JH-Series Harvesters deliver top-of-the-industry performance, productivity, and uptime. And the impressively accurate TimberRite measuring system means that the Deere-Waratah combo gives you security, confidence, and the highest-value cut per stem.



HTH622B

Height (With Rotator)
Weight (Including Rotator and Link)
Processing/Delimiting Maximum Diameter
Maximum Opening: Upper Knives
Application

126 in. (3200 mm)
4,674 lb. (2120 kg)
30 in. (760 mm)
25.5 in. (640 mm)
– Ideal for big trees
– Perfect for multistem processing, tougher-than-nails design for continuous operation

HTH624C

130 in. (3300 mm)
7,473 lb. (3386 kg)
29.5 in. (750 mm)
Processing 29.5 in. (750 mm)
– Ideal for big trees
– Proven in final felling of wood up to 30 in. (75 cm)



The harder you work, the harder they work.

Your harvesting operations need and deserve maximum uptime. That's why the integrated Deere-Waratah harvesting package promises — and delivers — optimal uptime you can count on. Consistent quality and documented reliability provide all the testimony you need to know that your 8/900JH-Series Harvester is dependable and durable. And Deere and Waratah maintenance and service experts are available whenever and wherever you need them.

4-way leveling: A 4-way leveling system helps the machine's platform stay stable while cutting and moving from stem to stem.

Hydraulic system: The efficient hydraulic system increases horsepower and flow so these machines can grab stems effectively and quickly. The system adjusts its pressure and oil flow based on each load, thereby optimizing performance while lowering wear and tear on the system. In addition, cool-running hydraulics makes the pumps last longer.

Effective power management: Get targeted power when and where you need it without compromising other system functions. The hydraulic system prioritizes all power loads, so fundamental tasks such as feed speed and multifunctioning are assured sufficient targeted flow. That way you'll get maximum power while ensuring that no moving part is starved for oil. This power management feature translates into less downtime for maintenance, and it allows operators to perform cuts and cutting intervals as fast as they want.



Cut your daily operating costs down to size.

Although their size will dominate any forest, the 8/900JH-Series Harvesters were strategically designed to keep your daily operating costs low and manageable. The streamlined hydraulic system, for example, supports improved daily and long-term fuel efficiency and machine life, and the TMC-controlled cooling fan reduces debris buildup to ensure better hydraulics overall. Likewise, integrated service-friendly hoses, wires, and parts minimize service and maintenance expenses. And by using these advanced harvesting machines, owners will optimize their merchandising potential.

The intuitively designed hydraulic system has fewer parts for easier maintenance and greatly diminished downtime. The system features common hydraulic reservoir internal components such as independent suction lines, case-drain filtration, and common return filters. And the internal deck floor below the components makes clean-out easy.

Remote mounted, TMC-controlled variable-speed cooling fan reduces fuel consumption and offers a full reversing fan that blows out debris for better airflow.





JOHN DEERE



Tracked Harvesters

853JH, 903JH, 909JH

853JH / 903JH / 909JH

ENGINE

Non-road emission standards

Cylinders

Engine displacement

Peak power @ 1,900 rpm

Net power (ISO 9249) @ 2,000 rpm

Maximum net torque @ 1,400 rpm

Air cleaner:

Cooling fan

Air cleaner

John Deere PowerTech™ 6081H

Complies with EPA Tier 2 regulations and CARB emissions

6

494 cu. in. *8.1 L*

294 hp *205 kW*

274 hp *219 kW*

885 lbf. *1200 Nm*

Suction type, hydraulically-driven

Dual-stage dry type with safety element, aspirated

853JH / 903JH / 909JH

HYDRAULICS

Main pump:

Maximum rated flow

Dedicated attachment pump:

Maximum rated flow

Oil filtration

Variable-displacement axial piston

125 gpm *475 L/m*

Axial piston

30 gpm *114 L/m*

Two 10-micron return filters with bypass

CYLINDERS (FIXED STICK)

Boom (2):

Bore

Rod diameter

Stroke

Closed length

5.1 in. *130 mm*

3.7 in. *95 mm*

43.3 in. *1100 mm*

67.2 in. *1708 mm*

Arm (1):

Bore

Rod diameter

Stroke

Closed length

5.1 in. *130 mm*

3.7 in. *95 mm*

43.3 in. *1100 mm*

67.2 in. *1708 mm*

Leveller (2):

Bore

Rod diameter

Stroke

Closed length

N/A / N/A / 7.0 in. *178 mm*

N/A / N/A / 4.0 in. *102 mm*

N/A / N/A / 22.3 in. *566 mm*

N/A / N/A / 44.3 in. *1124 mm*

853JH

903JH

909JH

UNDERCARRIAGE

Track chain, heavy duty

Travel speed, forward and reverse:

High

Low

Additional features:

Carrier slides (per side)

Track rollers (per side)

Track adjustment

Track guides

Travel brakes

Tractive effort:

Standard heavy duty

Optional extreme duty

8.0 in. *203.2 mm*

8.5 in. *215.9 mm*

8.5 in. *215.9 mm*

3.1 mph *5.0 km/h*

1.6 mph *2.6 km/h*

2.6 mph *4.2 km/h*

1.2 mph *2.0 km/h*

2.6 mph *4.2 km/h*

1.2 mph *2.0 km/h*

Two, bolt-on
Eight, tractor type
Hydraulic

Two, bolt-on
Nine, tractor type
Hydraulic

Two, bolt-on
Ten, tractor type
Hydraulic

Integral, thick, high-abrasion-resistant material

Sealed, wet, multi-disc, automatic application, integral with track-drive gearboxes

55,700 lbf. *248 kN*

N/A

74,300 lbf. *331 kN*

N/A

74,300 lbf. *331 kN*

86,300 lbf. *384 kN*

853JH / 903JH / 909JH**SWING MECHANISM**

Standard features:

Rotation
Swing speed
Swing brakeContinuous 360 deg.
6.0 rpm (maximum)
Sealed, wet, multi-disc**CAPACITIES**Fuel tank
Cooling system
Engine lubrication, including filter
Hydraulic reservoir capacity
Swing-drive gearbox (each)
Track-drive gearbox (each)295 gal. *1117 L*
11.1 gal. *42.0 L*
7.4 gal. *28.0 L*
82 gal. *311 L*
1.2 gal. *4.5 L*
1.3 gal. *4.8 L***853JH****903JH****909JH****GROUND PRESSURE DATA**

As per SAE J1309, less attachment

Double grouser, heavy duty:
24 in. *610 mm*
30 in. *760 mm*8.64 psi *59.6 kPa*
7.03 psi *48.5 kPa*8.70 psi *60.0 kPa*
7.12 psi *49.1 kPa*9.76 psi *67.3 kPa*
N/ASingle grouser, clipped corner,
heavy duty:24 in. *610 mm*
28 in. *710 mm*8.59 psi *59.2 kPa*
7.44 psi *51.3 kPa*8.72 psi *60.1 kPa*
7.57 psi *52.2 kPa*9.78 psi *67.4 kPa*
8.48 psi *58.5 kPa*

Triple grouser, heavy duty:*

36 in. *914 mm*6.03 psi *41.6 kPa*

N/A

N/A

*Recommended for soft terrain only.

853JH / 903JH / 909JH**ELECTRICAL**Voltage
Number of batteries
Alternator reading
Work lights24 volt
Two 12 volt
80 amp
8 twin-power halogen lights (6 flood, 2 spot)**OPERATING WEIGHTS**Approximate operating weight
includes standard equipment, half-
full fuel tank, all fluids, and 175-lb.
80 kg operator, less attachment60,530 lb. *27 450 kg*65,720 lb. *29 805 kg*77,840 lb. *35 300 kg***HTH622B****HTH624C****ATTACHMENT INFORMATION**Maximum cutting capacity
Maximum delimiting capacity
Feeding mechanism
Dimensions:
Width (arms open)
Width (arms closed)
Height (with rotator)30.0 in. *762 mm*29.5 in. *750 mm*25.5 in. *647 mm*30.0 in. *762 mm*

3 rollers, fully synchronized hydraulic drive

Width (arms open)

68.6 in. *1742 mm*78.7 in. *2000 mm*

Width (arms closed)

58.5 in. *1485 mm*

N/A

Height (with rotator)

126.0 in. *3200 mm*129.9 in. *3300 mm*

Weight (with rotator and link)

4,675 lb. *2120 kg*7,466 lb. *3386 kg*

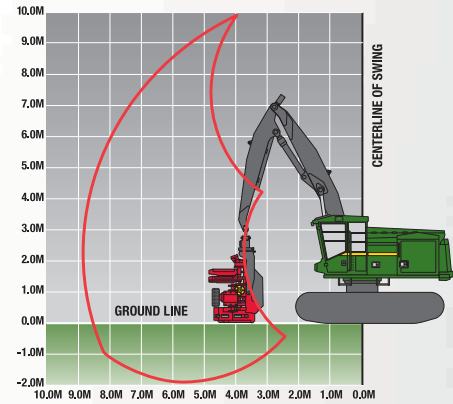
Saw equipped with automatic chain-tensioner system. See individual harvesting head brochures for more information.

853JH / 903JH / 909JH

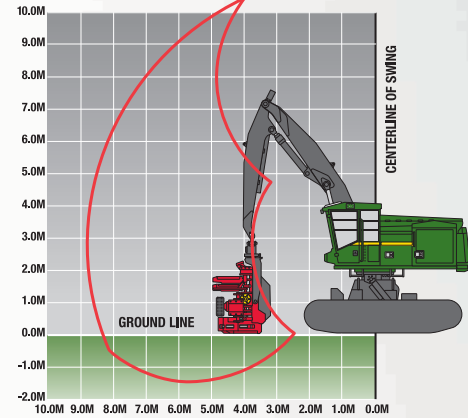
BOOM PERFORMANCE

Maximum reach (to attachment pin): With standard boom	29 ft. 0 in. <i>8.90 m</i>
Minimum reach (to attachment pin): With standard boom	12 ft. 5 in. <i>3.79 m</i>
Lift capacity (bare pin @ full reach): With standard boom	14,000 lb. <i>6350 kg</i>
Lift capacity (bare pin @ 20 ft. <i>6.1 m</i>): With standard boom	19,900 lb. <i>9025 kg</i>

903JH Tracked Harvester



909JH Tracked Harvester



853JH

903JH

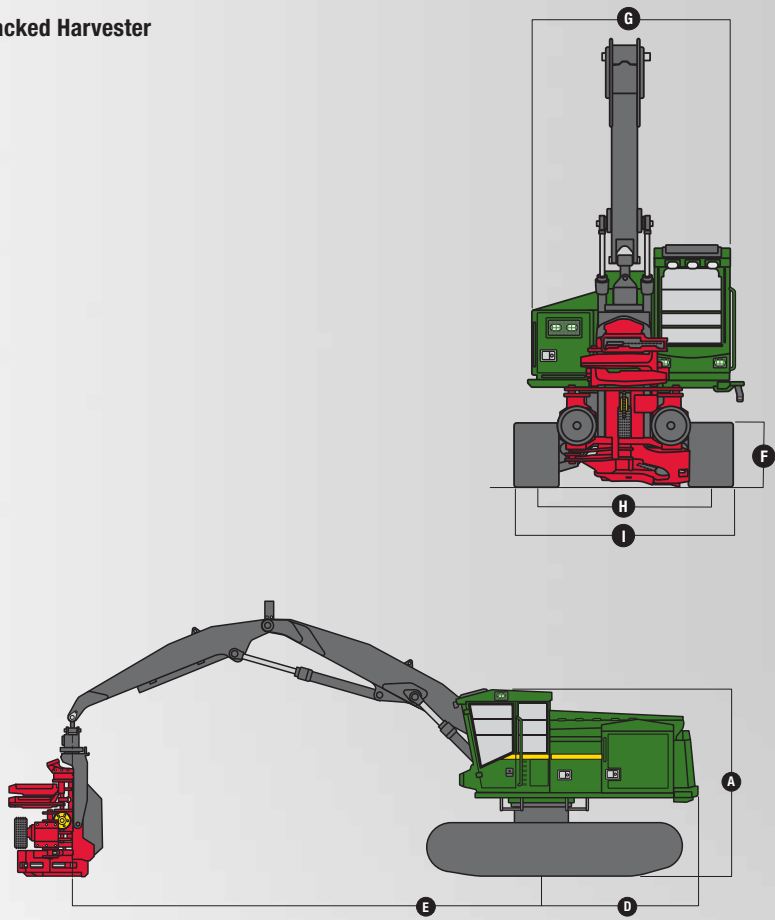
909JH

DIMENSIONS

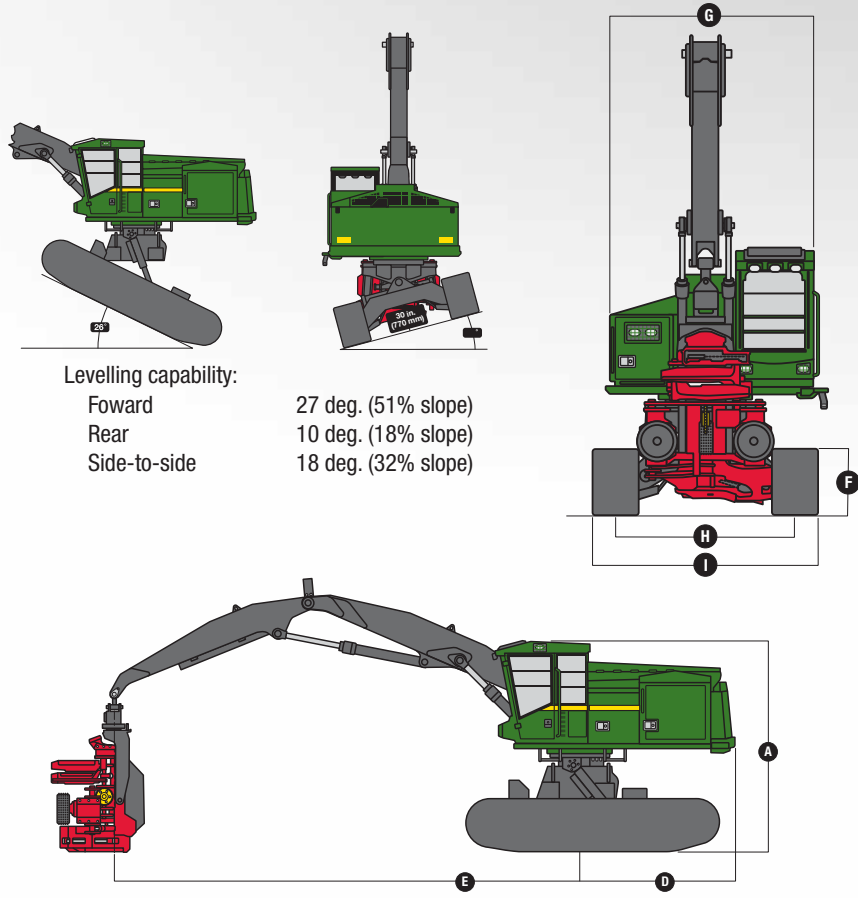
A Overall height (with HTH624C): Top of cab (without skylight)	11 ft. 6 in. <i>3.50 m</i>	11 ft. 9 in. <i>3.58 m</i>	N/A
Top of cab (with skylight)	12 ft. 5 in. <i>3.78 m</i>	12 ft. 8 in. <i>3.86 m</i>	13 ft. 1 in. <i>4.00 m</i>
Top of boom	15 ft. 8 in. <i>4.77 m</i>	15 ft. 8 in. <i>4.77 m</i>	16 ft. 4 in. <i>4.98 m</i>
B Overall track length	14 ft. 6 in. <i>4.41 m</i>	15 ft. 5 in. <i>4.69 m</i>	16 ft. 2 in. <i>4.92 m</i>
C Track length (idler to sprocket)	11 ft. 1 in. <i>3.37 m</i>	11 ft. 10 in. <i>3.62 m</i>	12 ft. 7 in. <i>3.83 m</i>
D Tail swing (from swing center): Standard counterweight	10 ft. 0 in. <i>3.05 m</i>	10 ft. 0 in. <i>3.05 m</i>	10 ft. 0 in. <i>3.05 m</i>
Optional counterweight	N/A	10 ft. 7 in. <i>3.23 m</i>	10 ft. 7 in. <i>3.23 m</i>
E Reach (to attachment pin): Maximum	29 ft. 0 in. <i>8.90 m</i>	29 ft. 0 in. <i>8.90 m</i>	29 ft. 0 in. <i>8.90 m</i>
Minimum	12 ft. 5 in. <i>3.79 m</i>	12 ft. 5 in. <i>3.79 m</i>	12 ft. 5 in. <i>3.79 m</i>
F Ground clearance: Single grouser	2 ft. 5 in. <i>729 mm</i>	2 ft. 5 in. <i>735 mm</i>	2 ft. 6 in. <i>769 mm</i>
Double grouser	2 ft. 4 in. <i>700 mm</i>	2 ft. 4 in. <i>701 mm</i>	2 ft. 5 in. <i>735 mm</i>
Triple grouser	2 ft. 3 in. <i>685 mm</i>	N/A	N/A
G Upperstructure width	9 ft. 9 in. <i>2.97 m</i>	9 ft. 9 in. <i>2.97 m</i>	10 ft. 6 in. <i>3.20 m</i>
H Track gauge	8 ft. 5 in. <i>2.56 m</i>	8 ft. 5 in. <i>2.56 m</i>	8 ft. 11 in. <i>2.72 m</i>
I Width over tracks: 24-in. <i>610 mm</i> track shoes	10 ft. 5 in. <i>3.17 m</i>	10 ft. 5 in. <i>3.17 m</i>	10 ft. 11 in. <i>3.33 m</i>
28-in. <i>711 mm</i> track shoes	10 ft. 9 in. <i>3.27 m</i>	10 ft. 9 in. <i>3.27 m</i>	11 ft. 3 in. <i>3.43 m</i>
30-in. <i>760 mm</i> track shoes	10 ft. 11 in. <i>3.32 m</i>	10 ft. 11 in. <i>3.32 m</i>	N/A
36-in. <i>914 mm</i> track shoes	11 ft. 5 in. <i>3.47 m</i>	N/A	N/A

Machine not exactly as shown. Illustrations for dimensioning purposes only.

903JH Tracked Harvester



909JH Tracked Harvester



Levelling capability:

- | | |
|--------------|---------------------|
| Forward | 27 deg. (51% slope) |
| Rear | 10 deg. (18% slope) |
| Side-to-side | 18 deg. (32% slope) |

Machine not exactly as shown. Illustrations for dimensioning purposes only.



John Deere is the world's leading designer,
manufacturer, and distributor of forest machines.

Our range of purpose-built forestry equipment
is without equal in the industry.

From thinning to regeneration harvesting,
for both cut-to-length and full-tree applications,
John Deere builds woods-tough equipment
with the logger in mind.

