

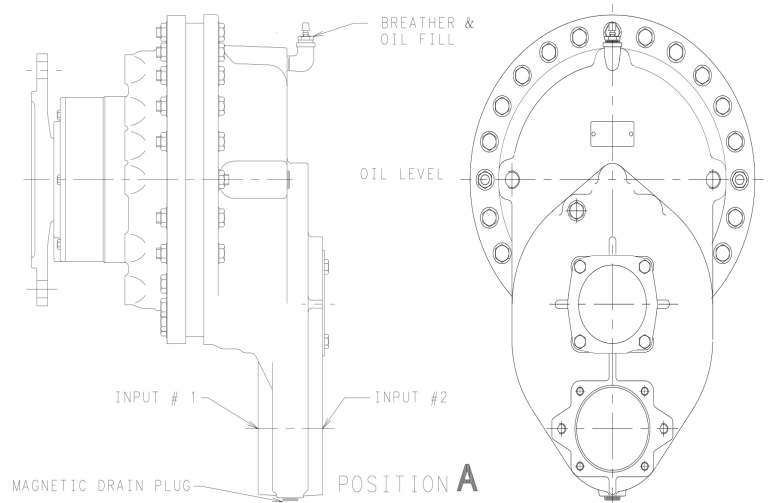
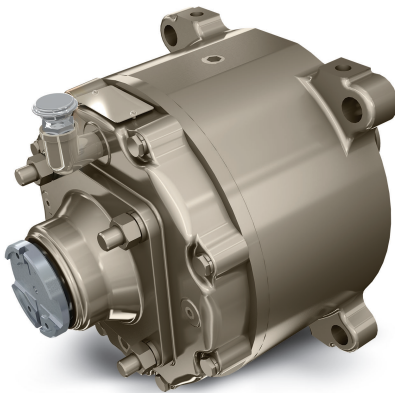
# Funk™ F9R

## Planetary Drive

Industrial Drivetrain Specifications



### Dimensions



Position A, "L" input style, horizontal output shown

### Ratings

Input power (max)	27 kW (36 hp)
Input speed (max) <sup>2</sup>	2800 rpm <sup>2</sup>
Output torque (intermittent)	12,880 Nm (9,500 lb-ft)
Output torque (continuous)	8,135 Nm (6,000 lb-ft)

<sup>1</sup> Actual ratio is dependent on the drive configuration.  
<sup>2</sup> Max input speed related to ratio and max output speed.  
<sup>3</sup> Max radial load placed at optimum load position.  
<sup>4</sup> Weight varies with configuration and ratio selected.  
<sup>5</sup> Requires tapered roller planet bearings (not available with all ratios).

### General data

Approximate dry weight <sup>4</sup>	100 - 181 kg (220 - 400 lb)
Radial load (max) <sup>3</sup>	14,287kg (31,500 lb)
Drive type	Speed reducer
Hydraulic motor input	SAE C or D hydraulic

### Gear ratios

Ratio range <sup>1</sup>	3.27-117:1
--------------------------	------------

### Features

#### Variety of input options

- Straight in for an on centerline adaption giving a symmetrical clearance around the hydraulic motor input
- Offset straight in allows the hydraulic motor to be mounted off center
- Right angle input moves the hydraulic motor perpendicular to the center line of the planetary drive for added clearance between components on track drives

#### Variety of output options

- With external shaft includes keyed, flanged or splint options to meet the various required output connections
- An added output option includes the output without external shaft by offering an internal spline at the output

#### John Deere Power Systems

3801 W. Ridgeway Ave.  
 PO Box 5100  
 Waterloo, IA 50704-5100  
 Phone: 800.553.6446  
 Fax: 319.292.5075

*Photographs may show non-standard equipment.*

*Specifications and design subject to change without notice. Ratings may vary depending on application and service. Application and installation are subject to review by John Deere.*