

# REPLACEMENT PARTS GUIDE

## 337E Knuckleboom Log Loader (PIN: 1T0337E\_\_F291461—)



**ENGINE AIR FILTER—SECONDARY ELEMENT - [AT203470](#)**

Interval (hrs) - 1000.



**ENGINE AIR CLEANER ELEMENT-PRIMARY - [AT222722](#)**

Interval (hrs) - 1000.



**AIR CLEANER DUST UNLOADER VALVE [T158495](#)**

Interval (hrs) - As Required.



**DIESEL PARTICULATE FILTER (COMPONENT OF EXHAUST FILTER) [RE565702](#)**

Interval (hrs) - As Required.



**PRIMARY FUEL FILTER ELEMENT [DZ115391](#)**

Interval (hrs) - 500.



**ENGINE OIL FILTER ELEMENT [RE539279](#)**

Interval (hrs) - 500.



**FINAL FUEL FILTER ELEMENT [DZ115392](#)**

Interval (hrs) - 500.



**ENGINE ROCKER ARM COVER GASKET [R528743](#)**

Interval (hrs) - 2000.



**CIRCLE SAW RETURN FILTER (IF EQUIPPED) - [AT461794](#)**

Interval (hrs) - 1000.



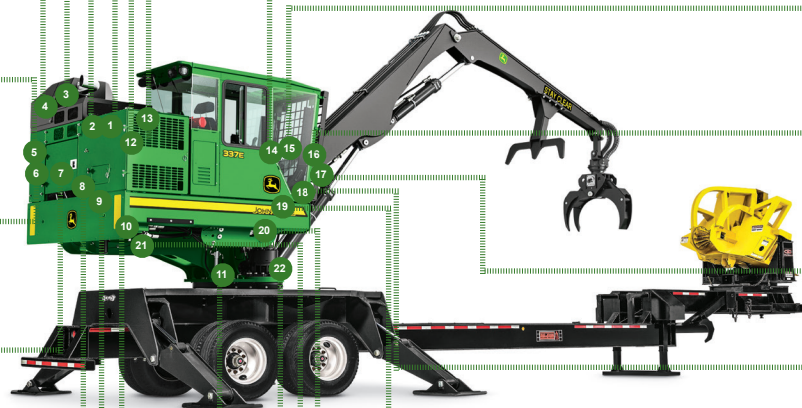
**HYDRAULIC OIL RETURN FILTER ELEMENT [F061786](#)**

Interval (hrs) - 1000.



**PILOT FILTER ELEMENT [F437580](#)**

Interval (hrs) - 1000.



**HYDRAULIC TANK BREATHER FILTER [T225008](#)**

Interval (hrs) - 2000.



**OPEN CRANKCASE VENTILATION (OCV) FILTER [DZ105796](#)**

Interval (hrs) - 2000.



**DIESEL EXHAUST FLUID (DEF) HEADER SUCTION FILTER AND BAFFLE (S.N. 304890—) - [AT502964](#)**

Interval (hrs) - 4000.



**DIESEL EXHAUST FLUID (DEF) TANK BREATHER FILTER - [H216169](#)**

Interval (hrs) - 4000.



**DIESEL EXHAUST FLUID (DEF) DOSING UNIT FILTER - [DZ114640](#)**

Interval (hrs) - 2000.



**DIESEL EXHAUST FLUID (DEF) TANK FILL SCREEN (S.N. —304889) - [RE574725](#)**

Interval (hrs) - 2000.



**DIESEL EXHAUST FLUID (DEF) HEADER SUCTION SCREEN AND BAFFLE (S.N. —304889) - [AT486844](#)**

Interval (hrs) - 2000.



**FUEL TANK BREATHER [T231314](#)**

Interval (hrs) - 2000.



**CAB RECIRCULATING AIR FILTER [AT307501](#)**

Interval (hrs) - As Required.



**CASE DRAIN FILTER [AT420665](#)**

Interval (hrs) - 2000.



**CAB FRESH AIR FILTER [AT191102](#)**

Interval (hrs) - As Required








**JOHN DEERE**  
Genuine Parts and Service

CLICK PART NUMBER TO BUY

\*See operator's manual for additional details.

# OILS AND CAPACITIES INFORMATION

## 337E Knuckleboom Log Loader (PIN: 1T0337E\_\_F291461— )

Part Description	Part Number	Qty or capacity	Change Interval In Hours
John Deere Plus-50™ II Engine Oil <sup>4</sup> 	<a href="#">TY26674</a>	20.0 L (5.3 gal)	500
API GL-5 Pump Drive Gear Case Oil (if equipped) <sup>2, 4</sup> 	<a href="#">TY6296</a>	4.3 L (1.1 gal)	1000
API GL-5 Swing Gear Case Oil <sup>4</sup> 	<a href="#">TY6296</a>	5.3 L (1.4 gal)	1000
John Deere Hydrau™ Hydraulic Oil <sup>4</sup> 	<a href="#">TY27367</a>	151.4 L (40.0 gal)	4000
John Deere Cool-Gard™ II Pre-Mix 	<a href="#">TY26575</a>	28.4 L (7.5 gal)	6000
Fluid Analysis Kits <sup>5</sup>			
Diesel Engine Oil	<a href="#">AT346594</a>	1	250
Hydraulic Oil	<a href="#">AT346594</a>	1	500
Swing Gear Case Oil	<a href="#">AT346594</a>	1	500
Pump Drive Gear Case Oil (if equipped) <sup>2</sup>	<a href="#">AT346594</a>	1	500
Diesel Fuel	<a href="#">AT180344</a>	1	500
Engine Coolant	<a href="#">TY27787</a>	1	500
<p><sup>2</sup> The pump drive gear case is available on the 437E only.</p> <p><sup>4</sup> See operator's manual for recommended oil type and oil viscosities based on operating temperatures.</p> <p><sup>5</sup> Based on fluid analysis results, intervals may need to be adjusted for operating conditions. consult a local John Deere dealer.</p>			

Plus-50 is a trademark of Deere & Company

Hy-Gard is a trademark of Deere & Company

Hydrau is a trademark of Deere & Company

COOL-GARD is a trademark of Deere & Company

## Service Intervals

As Required	
<input type="checkbox"/> Check and clean air cleaner dust unloader valve	<input type="checkbox"/> Check and clean radiator and oil cooler fins
<input type="checkbox"/> Check windshield washer fluid level	<input type="checkbox"/> Inspect and clean engine air filter precleaner
<input type="checkbox"/> Check engine fan belt	<input type="checkbox"/> Service exhaust filter
Every 10 Hours or Daily	
<input type="checkbox"/> Lubricate grapple rotator and pins	<input type="checkbox"/> Check engine oil level
<input type="checkbox"/> Lubricate boom, arm, and cylinder pivots	<input type="checkbox"/> Check hydraulic oil level
<input type="checkbox"/> Lubricate swing bearing and pinion	<input type="checkbox"/> Check and drain primary fuel filter and water separator
<input type="checkbox"/> Lubricate stabilizer and stabilizer cylinder pins	<input type="checkbox"/> Check swing gear case oil level
<input type="checkbox"/> Check engine coolant level	<input type="checkbox"/> Check fire extinguisher
Every 100 Hours	
<input type="checkbox"/> Lubricate rotary manifold	
Initial Service—250 Hours	
<input type="checkbox"/> Drain and refill pump drive gear case oil (if equipped)	<input type="checkbox"/> Check mounting hardware torque on truck, trailer, or carrier
Every 250 Hours	
<input type="checkbox"/> Take engine oil sample	
Every 500 Hours	
<input type="checkbox"/> Drain and refill engine oil and replace filter	<input type="checkbox"/> Check air intake hose
<input type="checkbox"/> Replace primary fuel filter and water separator	<input type="checkbox"/> Take hydraulic oil sample
<input type="checkbox"/> Replace final fuel filter	<input type="checkbox"/> Take swing gear case oil sample
<input type="checkbox"/> Drain water and sediment from fuel tank sump	<input type="checkbox"/> Take pump drive gear case oil sample (if equipped)
<input type="checkbox"/> Check pump drive gear case oil level (if equipped)	<input type="checkbox"/> Take engine coolant sample
<input type="checkbox"/> Check battery electrolyte level and terminals	<input type="checkbox"/> Take diesel fuel sample
<input type="checkbox"/> Check swing bearing mounting cap screws	
Every 1000 Hours	
<input type="checkbox"/> Inspect cab fresh air filter	<input type="checkbox"/> Drain and refill swing gear case oil
<input type="checkbox"/> Inspect cab recirculating air filter	<input type="checkbox"/> Drain and refill pump drive gear case oil (if equipped)
<input type="checkbox"/> Replace engine air filters	<input type="checkbox"/> Lubricate swing gear case
<input type="checkbox"/> Replace hydraulic oil return filter	<input type="checkbox"/> Check mounting hardware torque on truck, trailer, or carrier
<input type="checkbox"/> Replace pilot filter	<input type="checkbox"/> Check coolant condition
<input type="checkbox"/> Replace circle saw return filter (if equipped)	
Every 2000 Hours	
<input type="checkbox"/> Drain and refill hydraulic oil	<input type="checkbox"/> Replace fuel tank breather
<input type="checkbox"/> Replace hydraulic tank breather filter	<input type="checkbox"/> Replace diesel exhaust fluid (DEF) dosing unit filter
<input type="checkbox"/> Replace case drain filter	<input type="checkbox"/> Replace open crankcase ventilation (OCV) filter
<input type="checkbox"/> Check and adjust engine valve lash	<input type="checkbox"/> Clean diesel exhaust fluid (DEF) tank (S.N. —304889)
<input type="checkbox"/> Clean or replace diesel exhaust fluid (DEF) tank fill screen (S.N. —304889)	<input type="checkbox"/> Replace diesel exhaust fluid (DEF) header suction screen and baffle (S.N. —304889)
Every 4000 Hours	
<input type="checkbox"/> Replace diesel exhaust fluid (DEF) tank breather filter	<input type="checkbox"/> Clean diesel exhaust fluid (DEF) tank (S.N. 304890— )
<input type="checkbox"/> Replace diesel exhaust fluid (DEF) header suction filter and baffle (S.N. 304890— )	
Every 6000 Hours	
<input type="checkbox"/> Drain and refill engine cooling system	