

REPLACEMENT PARTS GUIDE

335D Knuckleboom Log Loader (PIN: 1T0335DX__C184061—)



AIR FILTER (SECONDARY)

[AT314583](#)

Interval (hrs) - 1000.



AIR FILTER (PRIMARY)

[AT300487](#)

Interval (hrs) - 1000.



ENGINE ROCKER ARM COVER GASKET

[R524469](#)

Interval (hrs) - 2000.



FINAL FUEL FILTER

[RE522878](#)

Interval (hrs) - 500.



FUEL/WATER SEPARATOR

[RE541922](#)

Interval (hrs) - 500.



ENGINE CRANKSHAFT DAMPENER

[RE505881](#)

Interval (hrs) - 4000.



ENGINE OIL FILTER

[RE504836](#)

Interval (hrs) - 5000.



HYDRAULIC OIL RETURN FILTER

[F061786](#)

Interval (hrs) - 1000.



PILOT FILTER—335D

[842964900](#)

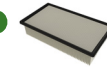
Interval (hrs) - 1000.



HYDRAULIC BREATHER FILTER

[T225008](#)

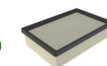
Interval (hrs) - 1000.



RECIRCULATION AIR FILTER

[AT307501](#)

Interval (hrs) - As Required.








FRESH AIR FILTER

[AT191102](#)

Interval (hrs) - As Required.

OILS AND CAPACITIES INFORMATION

335D Knuckleboom Log Loader (PIN: 1T0335DX__C184061—)

Part Description	Part Number	Qty or capacity	Change Interval In Hours
John Deere Plus-50™ II Engine Oil ² 	TY26674	19.0 L (5.0 gal)	500
John Deere Hydrau™ Hydraulic Oil ² 	TY27367	302.8 L (80.0 gal)	2000
API GL-5 Swing Gear Case Oil ² 	TY6296	5.3 L (1.4 gal)	2000
John Deere COOL-GARD™ II Pre-Mix 	TY26575	21.0 L (6.0 gal)	6000
Coolant Extender 	TY26603	AR	
Fluid Analysis Kits³			
Diesel Engine Oil	AT346594	1	250
Hydraulic Oil	AT346594	1	500
Swing Gear Case Oil	AT346594	1	500
Diesel Fuel	AT180344	1	500
Engine Coolant	TY27787	1	500
COOLGARD™ II Test Strips	TY26605	1	1000
<p>²See operator's manual for recommended oil type and oil viscosities based on operating temperatures.</p> <p>³Based on fluid analysis results, intervals may need to be adjusted for operating conditions. consult a local John Deere dealer.</p>			

Plus-50 is a trademark of Deere & Company
Hydrau is a trademark of Deere & Company
Cool-Gard is a trademark of Deere & Company

Service Intervals

As Required	
• Check/change fresh air filter	• Check/clean engine air filter and dust valve
• Check/change cab recirculation air filter	• Add coolant extender as indicated by COOLGARD™ II test strips
Every 10 Hours or Daily	
• Lubricate grapple rotator and pins	• Check engine coolant level
• Lubricate boom (hoist), stick (jib) and cylinder pivots	• Check engine oil level
• Check windshield washer fluid level	• Check and drain fuel/water separator
• Lubricate swing bearing and pinion	• Check swing gear case oil level
• Check hydraulic oil level	• Lubricate stabilizer and stabilizer cylinder pins
• Check and clean radiator and oil cooler fins	• Check fire extinguisher gauge (inside cab-left side)—if equipped
Every 100 Hours	
• Lubricate rotary manifold	
Initial Service—250 Hours	
• Drain and refill engine oil and replace filter	• Drain and refill swing gear case oil
Every 250 Hours	
• Take engine oil sample	
Every 500 Hours	
• Replace fuel filters	• Take hydraulic oil sample
• Check engine fan belt	• Take swing gear case oil sample
• Drain and refill engine oil and replace filter	• Take diesel fuel sample
• Check battery electrolyte level	• Take engine coolant sample
• Check swing bearing mounting cap screws (torque if required)	
Every 1000 Hours	
• Replace engine air filters	• Drain and refill swing gear case oil
• Check coolant	• Lubricate swing gear case
• Replace pilot filter	• Replace hydraulic oil return filters
Every 2000 Hours	
• Drain and refill hydraulic oil	• Clean case drain return screen
• Replace hydraulic tank breather filter	• Check engine valve clearance
Every 4000 Hours	
• Replace engine crankshaft dampener	
Every 6000 Hours	
• Drain, flush, and refill cooling system	