

REPLACEMENT PARTS GUIDE

872G And 872GP (PIN: 1DW872G__F678818—F680877)



**PRIMARY AIR FILTER ELEMENT,
STANDARD 13"**
[AT175223](#)
Interval (hrs) - As Required.



**DIESEL EXHAUST FLUID (DEF) DOSING
UNIT FILTER**
[DZ114640](#)
Interval (hrs) -2000



HYDRAULIC TANK BREATHER
[AT101565](#)
Interval (hrs) -2000



FUEL TANK BREATHER
[H216169](#)
Interval (hrs) -1000



**DIESEL EXHAUST FLUID (DEF) TANK
BREATHER**
[H216169](#)
Interval (hrs) -4000



HYDRAULIC OIL FILTER
[AT367840](#)
Interval (hrs) -2000



TRANSMISSION OIL FILTER
[AT335492](#)
Interval (hrs) -2000



**DIESEL EXHAUST FLUID (DEF) HEADER
SUCTION FILTER AND BAFFLE**
[AT502964](#)
Interval (hrs) -4000



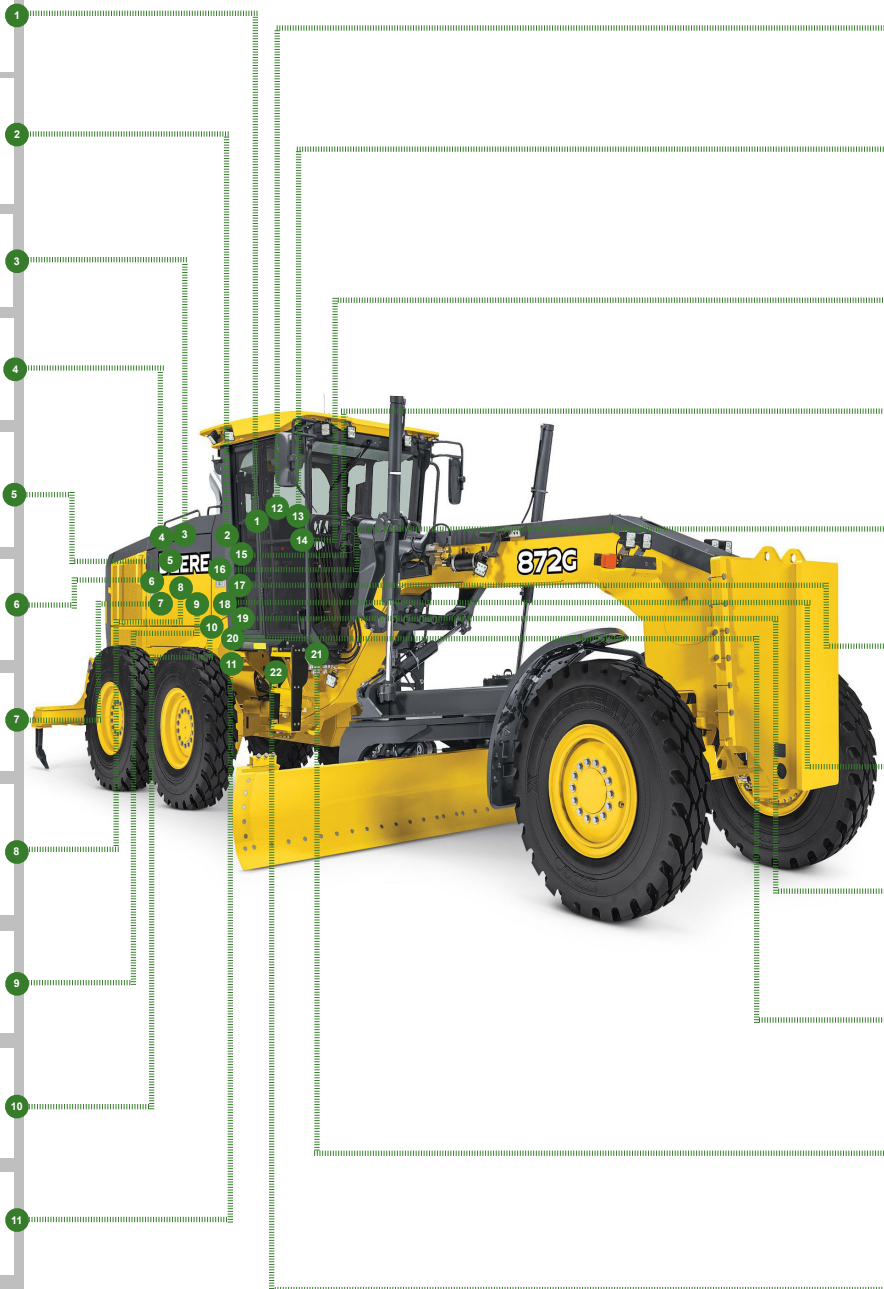
AXLE OIL FILTER
[AT335492](#)
Interval (hrs) -2000



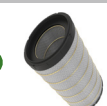
**AUXILIARY FUEL FILTER ELEMENT
(IF EQUIPPED)**
[AT365869](#)
Interval (hrs) -500



REAR AXLE BREATHER
[AT101565](#)
Interval (hrs) -2000



**SECONDARY AIR FILTER ELEMENT,
STANDARD 13"**
[AT175224](#)
Interval (hrs) -As Required



**PRIMARY AIR FILTER ELEMENT,
HEAVY-DUTY 14"**
[AT311066](#)
Interval (hrs) -As Required



**SECONDARY AIR FILTER ELEMENT,
HEAVY-DUTY 14"**
[AT311067](#)
Interval (hrs) -As Required



ENGINE OIL FILTER
[DZ118283](#)
Interval (hrs) -500



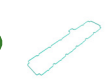
PRIMARY FUEL FILTER ELEMENT
[RE539465](#)
Interval (hrs) -500



FINAL FUEL FILTER ELEMENT
[DZ112918](#)
Interval (hrs) -500



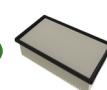
**FAST FILL FUEL BREATHER FILTER (IF
EQUIPPED)**
[T225008](#)
Interval (hrs) -1000



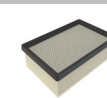
ENGINE ROCKER ARM COVER GASKET
[R526607](#)
Interval (hrs) -4000



**DIESEL PARTICULATE FILTER
(COMPONENT OF EXHAUST FILTER)**
[RE563694](#)
Interval (hrs) -As Required



CAB RECIRCULATION AIR FILTER
[AT307501](#)
Interval (hrs) -As Required








CAB FRESH AIR FILTER
[AT191102](#)
Interval (hrs) -As Required



PARTS AND CAPACITIES INFORMATION

872G and 872GP (PIN: 1DW872G__ _F678818—F680877)

Part Description	Part Number	Qty or capacity	Change Interval In Hours
John Deere Plus-50™ II Engine Oil ² 	TY26674	28.4 L (7.5 gal)	500
John Deere Hydrau™ Hydraulic Oil ² 	TY27316	60.5 L (16.0 gal)	4000
John Deere Hy-Gard™6WD Hub Oil ² (if equipped) (each) 	TY6354	7.2 L (2.0 gal)	1000
John Deere Hy-Gard™ Transmission, Axle, Circle Gear Case, and Tandem Oil ² 	TY6354	67.2 L (17.8 gal)	2000
John Deere Cool-Gard™ II Pre-Mix 	TY26575	55.0 L (14.5 gal)	6000
Fluid Analysis Test Kits ³			
Diesel Engine Oil	AT346594	1	250
Transmission Oil	AT346594	1	500
Axle Oil	AT346594	1	500
Tandem Oil	AT346594	2	500
Hydraulic Oil	AT346594	1	500
6WD Hub Oil (if equipped)	AT346594	2	500
Diesel Fuel	TY27329	1	500
Engine Coolant	TY26873	1	500
<p>1 Perform initial service once after the first 500 hours of operation.</p> <p>2 See operator's manual for recommended oil type and oil viscosities based on operating temperatures.</p> <p>3 Based on fluid analysis results, intervals may need to be adjusted for operating conditions. Consult an authorized John Deere dealer.</p>			

Plus-50 is a trademark of Deere & Company
Hydrau is a trademark of Deere & Company
Hy-Gard is a trademark of Deere & Company
Cool-Gard is a trademark of Deere & Company



CLICK PART NUMBER TO BUY

*See operator's manual for additional details.

Service Intervals

As Required	
<input type="checkbox"/> Service exhaust filter	<input type="checkbox"/> Inspect accessory belt and belt tensioner spring
<input type="checkbox"/> Clean cooler cores	<input type="checkbox"/> Replace engine air intake filter elements
<input type="checkbox"/> Clean and tighten battery terminals	<input type="checkbox"/> Drain fuel tank sump
<input type="checkbox"/> Clean battery compartment	<input type="checkbox"/> Drain primary fuel filter and water separator
<input type="checkbox"/> Clean or replace cab fresh air and cab recirculation filters	<input type="checkbox"/> Drain auxiliary fuel filter and water separator (if equipped)
<input type="checkbox"/> Lubricate circle pinion	<input type="checkbox"/> Check rear camera (if equipped)
<input type="checkbox"/> Check tire pressure	<input type="checkbox"/> Transmission control unit (TCU) calibration
<input type="checkbox"/> Check blade circle and draft frame wear inserts	<input type="checkbox"/> 6WD controller calibration (if equipped)
<input type="checkbox"/> Check blade lift cylinder sockets	<input type="checkbox"/> Cross slope sensors calibration (if equipped)
<input type="checkbox"/> Lubricate saddle locking pin holes	<input type="checkbox"/> Hydraulic valves calibration (if equipped)
<input type="checkbox"/> Blade sideshift wear insert adjustment	<input type="checkbox"/> Replace starting fluid cylinder (if equipped)
Every 10 Hours or Daily	
<input type="checkbox"/> Check hydraulic tank oil level	<input type="checkbox"/> Check engine oil level
<input type="checkbox"/> Check transmission oil level	<input type="checkbox"/> Check engine coolant level in surge tank
Every 50 Hours	
<input type="checkbox"/> Lubricate frame hinge pivots	<input type="checkbox"/> Lubricate front axle lean bar pivot
<input type="checkbox"/> Lubricate lift cylinders	<input type="checkbox"/> Lubricate front axle steering pin
<input type="checkbox"/> Lubricate draft frame ball	<input type="checkbox"/> Lubricate tie rod ends
<input type="checkbox"/> Lubricate front mounted scarifier or dozer blade (if equipped)	<input type="checkbox"/> Lubricate steering cylinders
<input type="checkbox"/> Lubricate Balderson™ style front lift group (if equipped)	<input type="checkbox"/> Lubricate midmount scarifier (if equipped)
<input type="checkbox"/> Lubricate front axle oscillation pin	<input type="checkbox"/> Lubricate circle sideshift cylinder
<input type="checkbox"/> Lubricate front axle lean pivot casting pins	<input type="checkbox"/> Lubricate saddle locking pin
Every 250 Hours	
<input type="checkbox"/> Check battery electrolyte level and terminals	<input type="checkbox"/> Take engine oil sample
Initial Service—500 Hours ¹	
<input type="checkbox"/> Replace axle oil filter	<input type="checkbox"/> Replace transmission oil filter
Every 500 Hours	
<input type="checkbox"/> Check axle oil level	<input type="checkbox"/> Replace primary fuel filter and water separator
<input type="checkbox"/> Check tandem oil level	<input type="checkbox"/> Replace auxiliary fuel filter and water separator (if equipped)
<input type="checkbox"/> Drain and refill engine oil and replace filter	<input type="checkbox"/> Take hydraulic oil sample
<input type="checkbox"/> Drain and refill engine oil (quick service) (if equipped)	<input type="checkbox"/> Take transmission oil sample
<input type="checkbox"/> Check receiver-dryer moisture indicator	<input type="checkbox"/> Take axle oil sample
<input type="checkbox"/> Check circle gear case oil level	<input type="checkbox"/> Take tandem oil sample
<input type="checkbox"/> Check 6WD hub oil level (if equipped)	<input type="checkbox"/> Take 6WD hub oil sample (if equipped)
<input type="checkbox"/> Lubricate tandem pivots	<input type="checkbox"/> Take engine coolant sample
<input type="checkbox"/> Check brake accumulator	<input type="checkbox"/> Take diesel fuel sample
<input type="checkbox"/> Replace final fuel filter	
Every 1000 Hours	
<input type="checkbox"/> Drain and refill 6WD hub oil (if equipped)	<input type="checkbox"/> Check engine air intake hoses
<input type="checkbox"/> Adjust front wheel bearings (standard axle only)	<input type="checkbox"/> Check coolant condition
<input type="checkbox"/> Replace fast fill fuel breather filter (if equipped)	<input type="checkbox"/> Replace fuel tank breather

Service Intervals

Every 2000 Hours	
<input type="checkbox"/> Drain and refill axle oil	<input type="checkbox"/> Clean engine crankcase ventilation tube
<input type="checkbox"/> Drain and refill transmission oil	<input type="checkbox"/> Replace axle oil filter
<input type="checkbox"/> Drain and refill transmission oil (quick service) (if equipped)	<input type="checkbox"/> Replace hydraulic oil filter
<input type="checkbox"/> Replace rear axle breather filter and hydraulic tank breather filter	<input type="checkbox"/> Replace transmission oil filter
<input type="checkbox"/> Drain and refill circle gear case oil	<input type="checkbox"/> Replace 6WD hydraulic oil filter (672, 772, and 872)
<input type="checkbox"/> Check and adjust engine valve lash	<input type="checkbox"/> Replace diesel exhaust fluid (DEF) dosing unit filter
Every 4000 Hours	
<input type="checkbox"/> Drain and refill hydraulic tank oil	<input type="checkbox"/> Replace diesel exhaust fluid (DEF) breather
<input type="checkbox"/> Drain and refill hydraulic tank oil (quick service) (if equipped)	<input type="checkbox"/> Clean diesel exhaust fluid (DEF) tank
<input type="checkbox"/> Drain and refill tandem oil	<input type="checkbox"/> Replace diesel exhaust fluid (DEF) header suction filter
<input type="checkbox"/> Clean transmission pump inlet screen	<input type="checkbox"/> Replace diesel exhaust fluid (DEF) baffle
Every 6000 Hours	
<input type="checkbox"/> Drain, flush, and refill cooling system	<input type="checkbox"/> Drain, flush, and refill cooling system (quick service) (if equipped)