

REPLACEMENT PARTS GUIDE

744K 4WD Loader (S.N. —632967) Engines 6090HDW06 and 6090HDW08



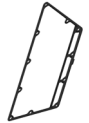
AIR FILTER ELEMENT SECONDARY [HXE11091](#)

Interval (hrs) - 1000.



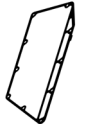
HYDRAULIC RESERVOIR BREATHER FILTER [AM39653](#)

Interval (hrs) - 500.



ROCKER ARM COVER GASKET (USE WITH RE529972) [R518263](#)

Interval (hrs) - 2000.



ROCKER ARM COVER GASKET (USE WITH RE536705) [R527884](#)

Interval (hrs) - 2000.



AIR FILTER ELEMENT PRIMARY [AT386551](#)

Interval (hrs) - 1000.



AIR FILTER DUST UNLOADER VALVE [T158495](#)

Interval (hrs) - 1000.



IN-LINE FUEL STRAINER [AT223493](#)

Interval (hrs) - 500.



AUXILIARY FUEL FILTER AND WATER SEPARATOR (IF EQUIPPED) - [AT365869](#)

Interval (hrs) - 500.



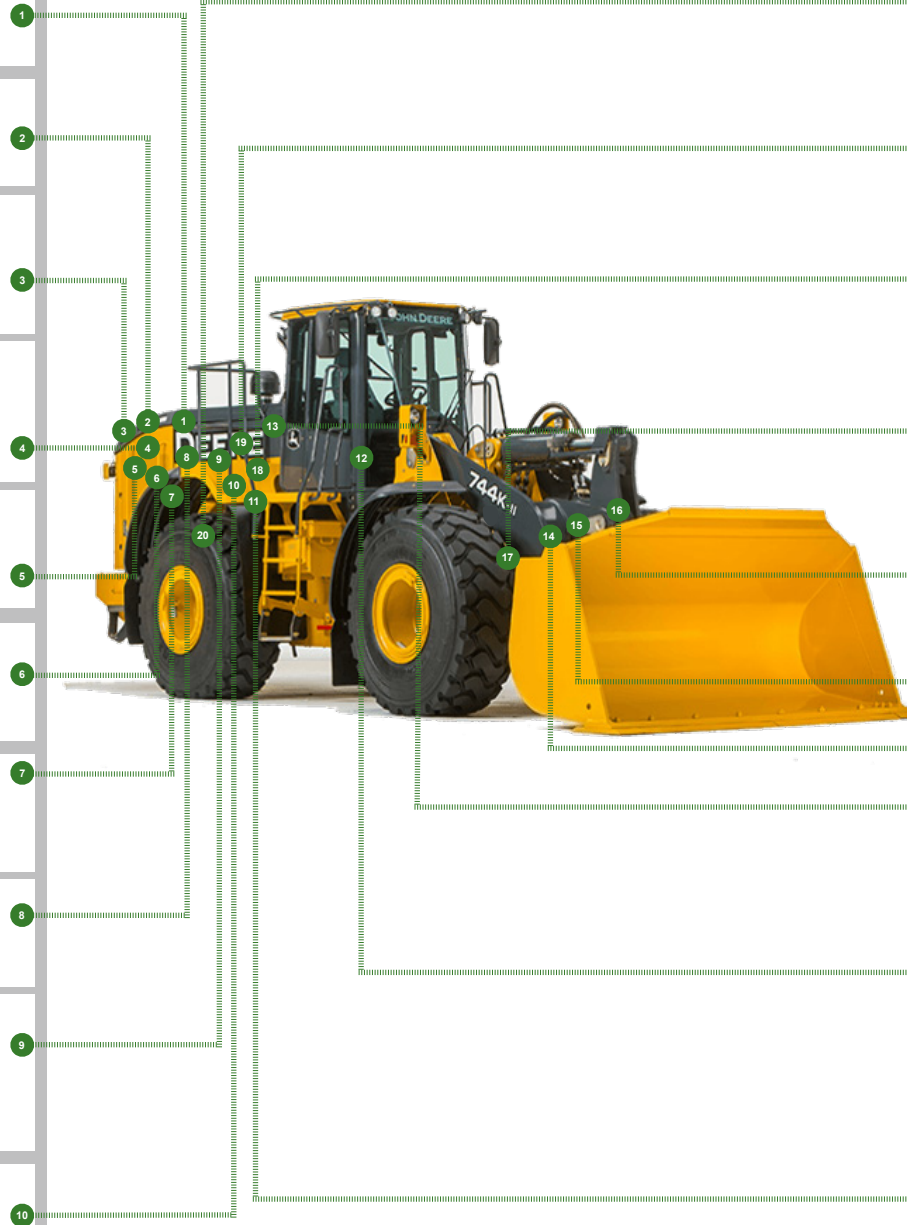
PRIMARY FUEL FILTER ELEMENT [RE525523](#)

Interval (hrs) - 500.



OIL FILTER [RE521420](#)

Interval (hrs) - 500.



TRANSMISSION OIL FILTERS [AT336140](#)

Interval (hrs) - 2000.



FAST FILL FUEL BREATHER FILTER [T225008](#) (IF EQUIPPED)

Interval (hrs) - 500.



CRANKSHAFT DAMPER [RE520465](#)

Interval (hrs) - 4000.



AXLE OIL FILTER [AT333901](#)

Interval (hrs) - 1000.



OUTER PIN SEALS NEVERGREASE™ LINKAGE

BOOM TO ATTACHMENT JOINT
ALL OTHER LINKAGE CONFIGURATIONS
BOOM TO ATTACHMENT JOINT



ATTACHMENT TO BUCKET LINK JOINT [AT330664](#)

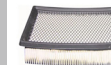


BUCKET LINK TO BELLCRANK JOINT [RE520465](#)



STEERING CYLINDER JOINT (S.N. 632198 -) [T276674](#)

Interval (hrs) - As Required.



FRESH AIR FILTER ELEMENT [AT191102](#)



RECIRCULATION AIR FILTER ELEMENT [AT307501](#)

Interval (hrs) - As Required.








HYDRAULIC SYSTEM RETURN FILTER ELEMENT [AT335977](#)

Interval (hrs) - 4000.



REPLACEMENT PARTS GUIDE

744K 4WD Loader (S.N. —632967) Engines 6090HDW06 and 6090HDW08

Part Description	Part Number	Qty or capacity	Change Interval In Hours
John Deere Plus-50™ II Engine Oil ⁵ 	TY26674	34.0 L (9.0 gal)	500
John Deere Hydrau™ Hydraulic Oil ⁵ 	TY27367	159.0 L (42.0 gal.)	4000
COOL-GARD™ II Pre-Mix 	TY26575	45.0 L (12.0 gal.)	6000
Coolant Extender 	TY26603	As Required	As Required
John Deere Hy-Gard™ Transmission, Park Brake, and Axle Oil ⁵ 	TY6354	Initial Capacity 92.0 L (24.3 gal) 0.71 L (24.0 oz) 120.7 L (31.9 gal)	1000
Fluid Analysis Kits ⁴			
Diesel Engine Oil	AT346594	1	250
Transmission Oil	AT346594	1	500
Axle Oil	AT346594	2	500
Hydraulic Oil	AT346594	1	500
Diesel Fuel	AT180344	1	500
Engine Coolant	TY26873	1	500
COOL-GARD™ II Test Strips	TY26605	1	As Required

⁴ The magnetic drain plug is serving its purpose when a ball of fine metal particles or chips are found on the magnet. If concerned with the amount of debris on the plug, clean and check again after running a short time with fresh oil.

⁵ See operator's manual for recommended oil type and oil viscosities based on operating temperatures.

Service Intervals

744K 4WD Loader (S.N. —632967) Engines 6090HDW06 and 6090HDW08

As Required	
• Inspect tires and check pressure	• Check windshield washer fluid level
• Check wheel bolt/nut torque	• Drain water from primary fuel filter
• Inspect engine air cleaner elements	• Drain water from final fuel filter
• Inspect air conditioner compressor and alternator belt	• Drain water from auxiliary fuel filter and water separator (if equipped)
• Clean cooler cores	• Check and clean or replace cab fresh air filter
• Replace fast fill fuel breather filter (if equipped) ¹	• Check and clean or replace cab recirculating air filter
• Add coolant extender as indicated by COOL-GARD™ II test strips	• Check rear camera and radar object detection (ROD) system (if equipped)
Every 10 Hours or Daily	
• Clean or replace air cleaner dust unloader valve	• Check hydraulic system oil level
• Check coolant level in surge tank	• Check transmission oil level
• Check engine oil level	• Inspect outer pin seals
Every 100 Hours	
• Lubricate loader linkage and cylinder pivots (unless NeverGrease™ equipped)	
Initial Service – 250 Hours ²	
• Drain and refill front and rear axle oil	• Replace axle oil filters
• Drain and refill engine oil and replace filter	
Every 250 Hours	
• Take engine oil sample	
Every 500 Hours	
• Check battery water level and terminals	• Replace hydraulic reservoir breather filter
• Check front and rear axle oil level	• Lubricate front and rear shaft seals on park brake
• Check air intake hoses and charge air cooler tube couplings	• Check park brake oil level
• Replace fast fill fuel breather filter (if equipped) ¹	• Take transmission oil sample
• Replace primary fuel filter	• Take hydraulic oil sample
• Replace final fuel filter	• Take axle oil sample
• Replace auxiliary fuel filter and water separator (if equipped)	• Take diesel fuel sample
• Replace in-line fuel strainer	• Take engine coolant sample
• Drain and refill engine oil and replace filter	• Lubricate driveline upper and lower sliding joints and lower U-joints
• Check ride control accumulator (if equipped)	
Every 1000 Hours	
• Replace air cleaner dust unloader valve	• Replace axle oil filters
• Replace engine air cleaner elements	• Clean hydraulic fan drive case drain in-line screens
• Remove and clean engine crankcase vent tube	• Lubricate frame hinge pivots
• Check coolant	• Drain and refill park brake oil
Every 2000 Hours	
• Drain and refill front and rear axle oil ³	• Rerun transmission clutch calibration
• Check and adjust engine valve lash	• Clean front and rear axle oil recirculation screens (if equipped)
• Drain and refill transmission oil and replace filters ⁴	• Replace outer pin seals
Every 4000 Hours	
• Replace crankshaft damper	• Replace hydraulic system return filters
• Clean hydraulic pump case drain in-line screens	• Drain, flush, and refill hydraulic system oil
• Clean hydraulic system fill strainer	
Every 5000 Hours	
• Check driveline damper	
Every 6000 Hours	
• Drain and refill cooling system	