

# REPLACEMENT PARTS GUIDE

620G Motor Grader (PIN: 1BZ620G\_\_C00001—) / (PIN: 1BZ620G\_\_D00001—)



## ENGINE OIL FILTER

[RE504836](#)

Interval (hrs) - 500



## AUXILIARY FUEL FILTER ELEMENT (IF EQUIPPED)

[AT365869](#)

Interval (hrs) - 500.



## HYDRAULIC TANK BREATHER FILTER

[AT101565](#)

Interval (hrs) - 2000.



## FUEL TANK BREATHER

[H216169](#)

Interval (hrs) - 1000.



## 6WD HYDRAULIC OIL FILTER (IF EQUIPPED)

[AT367840](#)

Interval (hrs) - 2000.



## HYDRAULIC OIL FILTER

[AT367840](#)

Interval (hrs) - 2000.



## AXLE OIL FILTER

[AT335492](#)

Interval (hrs) - 2000.



## TRANSMISSION OIL FILTER

[AT335492](#)

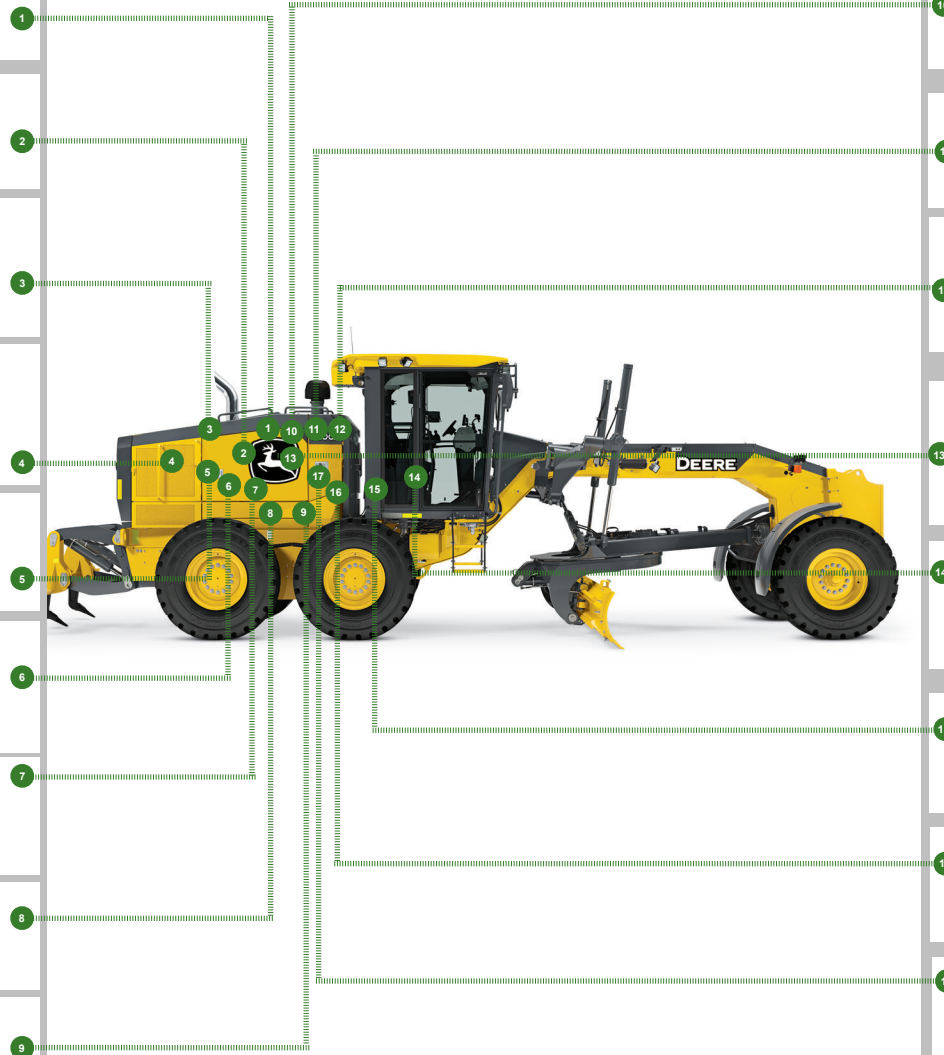
Interval (hrs) - 2000.



## REAR AXLE BREATHER FILTER

[AT101565](#)

Interval (hrs) - 2000.



## ENGINE ROCKER ARM COVER GASKET

[R524497](#)

Interval (hrs) -2000



## PRIMARY AIR FILTER ELEMENT

[AT178516](#)

Interval (hrs) - As Required.



## SECONDARY AIR FILTER ELEMENT

[AT178517](#)

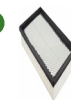
Interval (hrs) - As Required.



## PRIMARY FUEL FILTER ELEMENT

[RE541922](#)

Interval (hrs) - 500.



## CAB RECIRCULATION AIR FILTER

[AT307501](#)

Interval (hrs) - As Required.



## CAB FRESH AIR FILTER

[AT191102](#)

Interval (hrs) - As Required.



## FINAL FUEL FILTER ELEMENT

[RE522878](#)

Interval (hrs) - 500



## CRANKSHAFT DAMPER

[RE508578](#)

Interval (hrs) - 4500.



**JOHN DEERE**

Genuine Parts and Service

# OILS AND PARTS INFORMATION

620G Motor Grader (PIN: 1BZ620G\_\_C000001— ) / (PIN: 1BZ620G\_\_D000001— )

Part Description	Qty or capacity	Change Interval In Hours
John Deere Plus-50™ II Engine Oil <sup>3</sup>	26.0 L (6.9 gal)	500
John Deere Hydrau™ Hydraulic System Oil <sup>3</sup>	53.0 L (14.0 gal)	4000
John Deere Hy-Gard™ 6WD Hub Oil (if equipped) <sup>3</sup>	7.2 L (1.9 gal)	1000
John Deere Hy-Gard™ Transmission and Axle Oil <sup>3</sup>	66.4 L (17.5 gal)	2000
John Deere Hy-Gard™ Tandem Oil <sup>3</sup> (each)	74.0 L (19.5 gal)	4000
John Deere Hy-Gard™ Circle Gear Case Oil <sup>3</sup> (standard circle)	5.7 L (1.5 gal)	2000
John Deere Cool-Gard™ II Pre-Mix	44.0 L (11.6 gal)	6000

# OILS AND PARTS INFORMATION

620G Motor Grader (PIN: 1BZ620G\_\_C000001— ) / (PIN: 1BZ620G\_\_D000001— )

Fluid Analysis Kits <sup>4</sup>		
Part Description	Qty or capacity	Change Interval In Hours
Diesel Engine Oil	1	250
Transmission Oil	1	500
Axle Oil	1	500
Tandem Oil	2	500
Hydraulic Oil	1	500
6WD Hub Oil (if equipped)	2	500
Diesel Fuel	1	500
Engine Coolant	1	500

<sup>1</sup>Perform initial service once after the first 250 hours of operation if machine is factory filled with John Deere Break-In™ Engine Oil.  
<sup>2</sup>Perform initial service once after the first 500 hours of operation.  
<sup>3</sup>See operator's manual for recommended oil type and oil viscosities based on operating temperatures.  
<sup>4</sup>Based on fluid analysis results, intervals may need to be adjusted for operating conditions. Consult a local John Deere dealer.

Plus-50 is a trademark of Deere & Company

Hy-Gard is a trademark of Deere & Company

Hydrau is a trademark of Deere & Company

COOL-GARD is a trademark of Deere & Company



CLICK PART NUMBER TO BUY

\*See operator's manual for additional details.

## Service Intervals

As Required	
<input type="checkbox"/> Clean cooler cores	<input type="checkbox"/> Blade side shift wear insert adjustment
<input type="checkbox"/> Clean and tighten battery terminals	<input type="checkbox"/> Inspect accessory belt and belt tensioner spring
<input type="checkbox"/> Clean battery compartment	<input type="checkbox"/> Replace engine air intake filter elements
<input type="checkbox"/> Replace cab fresh air and cab recirculation filters	<input type="checkbox"/> Drain fuel tank sump
<input type="checkbox"/> Lubricate circle pinion (standard circle)	<input type="checkbox"/> Drain primary fuel filter and water separator
<input type="checkbox"/> Check tire pressure	<input type="checkbox"/> Drain auxiliary fuel filter and water separator (if equipped)
<input type="checkbox"/> Check blade circle and draft frame wear inserts (standard circle)	<input type="checkbox"/> Check camera (if equipped)
<input type="checkbox"/> Check blade lift cylinder sockets	<input type="checkbox"/> Transmission control unit calibration
<input type="checkbox"/> Lubricate saddle locking pin holes	
Every 10 Hours or Daily	
<input type="checkbox"/> Check hydraulic tank oil level	<input type="checkbox"/> Check engine oil level
<input type="checkbox"/> Check transmission oil level	<input type="checkbox"/> Check engine coolant surge tank level
Every 50 Hours	
<input type="checkbox"/> Lubricate frame hinge pivots	<input type="checkbox"/> Lubricate front axle steering pin
<input type="checkbox"/> Lubricate lift cylinders	<input type="checkbox"/> Lubricate tie rod ends
<input type="checkbox"/> Lubricate draft frame ball	<input type="checkbox"/> Lubricate steering cylinders
<input type="checkbox"/> Lubricate dozer blade (if equipped)	<input type="checkbox"/> Lubricate midmount scarifier (if equipped)
<input type="checkbox"/> Lubricate front axle oscillation pin	<input type="checkbox"/> Lubricate circle side shift cylinder
<input type="checkbox"/> Lubricate front axle lean pivot casting pins	<input type="checkbox"/> Lubricate saddle locking pin
<input type="checkbox"/> Lubricate front axle lean bar pivot	
Initial Service—250 Hours <sup>1</sup>	
<input type="checkbox"/> Drain and refill engine oil and replace filter	<input type="checkbox"/> Drain and refill engine oil (quick service) (if equipped)
Every 250 Hours	
<input type="checkbox"/> Check hybrid battery electrolyte level (if equipped)	<input type="checkbox"/> Take engine oil sample
Initial Service—500 Hours <sup>2</sup>	
<input type="checkbox"/> Replace axle oil filter	<input type="checkbox"/> Replace transmission oil filter
Every 500 Hours	
<input type="checkbox"/> Check tandem oil level	<input type="checkbox"/> Replace primary fuel filter and water separator
<input type="checkbox"/> Check axle oil level	<input type="checkbox"/> Replace auxiliary fuel filter and water separator (if equipped)
<input type="checkbox"/> Drain and refill engine oil and replace filter	<input type="checkbox"/> Take hydraulic oil sample
<input type="checkbox"/> Drain and refill engine oil (quick service) (if equipped)	<input type="checkbox"/> Take transmission oil sample
<input type="checkbox"/> Lubricate tandem pivots	<input type="checkbox"/> Take axle oil sample
<input type="checkbox"/> Check circle gear case oil level (standard circle)	<input type="checkbox"/> Take tandem oil sample
<input type="checkbox"/> Check brake accumulators	<input type="checkbox"/> Take 6WD hub oil sample (if equipped)
<input type="checkbox"/> Replace final fuel filter	<input type="checkbox"/> Take engine coolant sample

## Service Intervals

Every 1000 Hours	
<input type="checkbox"/> Drain and refill 6WD hub oil (if equipped)	<input type="checkbox"/> Check coolant condition
<input type="checkbox"/> Adjust front wheel bearings (standard axle only)	<input type="checkbox"/> Replace fuel tank breather
<input type="checkbox"/> Check engine air intake hoses	
Every 2000 Hours	
<input type="checkbox"/> Drain and refill axle oil	<input type="checkbox"/> Replace axle oil filter
<input type="checkbox"/> Drain and refill circle gear case oil	<input type="checkbox"/> Replace hydraulic oil filter
<input type="checkbox"/> Clean engine crankcase ventilation tube	<input type="checkbox"/> Replace transmission oil filter
<input type="checkbox"/> Drain and refill transmission oil	<input type="checkbox"/> Replace 6WD hydraulic oil filter (if equipped)
<input type="checkbox"/> Drain and refill transmission oil (quick service) (if equipped)	<input type="checkbox"/> Check and adjust engine valve lash
<input type="checkbox"/> Replace rear axle breather filter and hydraulic tank breather filter	
Every 4000 Hours	
<input type="checkbox"/> Drain and refill hydraulic tank oil	<input type="checkbox"/> Drain and refill tandem oil
<input type="checkbox"/> Drain and refill hydraulic tank oil (quick service) (if equipped)	<input type="checkbox"/> Clean transmission pump inlet screen
Every 4500 Hours	
<input type="checkbox"/> Replace engine crankshaft damper	
Every 6000 Hours	
<input type="checkbox"/> Drain and refill cooling system	<input type="checkbox"/> Drain and refill cooling system (quick service) (if equipped)