

REPLACEMENT PARTS GUIDE

544K (PIN: 1BZ544K__D00001—)



ENGINE AIR FILTER ELEMENT—PRIMARY

[AT300487](#)

Interval (hrs) - 1000.



ENGINE AIR CLEANER DUST UNLOADER VALVE

[M89679](#)

Interval (hrs) - 1000.



HYDRAULIC RESERVOIR BREATHER FILTER

[AM39653](#)

Interval (hrs) - 500.



ENGINE AIR FILTER ELEMENT—SECONDARY

[AT314583](#)

Interval (hrs) - 1000.



AUXILIARY FUEL FILTER—IF EQUIPPED

[AT433554](#)

Interval (hrs) - 500



PRIMARY FUEL FILTER

[RE524723](#)

Interval (hrs) - 500.



CRANKSHAFT DAMPER

[RE505881](#)

Interval (hrs) - 4000.



TRANSMISSION OIL FILTER

[AT468647](#)

Interval (hrs) - 2000



IN-LINE FUEL STRAINER

[AT223493](#)

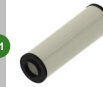
Interval (hrs) - 500.



AXLE OIL FILTERS—IF EQUIPPED

[AT367635](#)

Interval (hrs) - 1000.



HYDRAULIC SYSTEM RETURN FILTER

[AT335977](#)

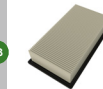
Interval (hrs) - 4000.



ENGINE ROCKER ARM COVER GASKET

[R524469](#)

Interval (hrs) - 2000.



CAB RECIRCULATING FILTER

[AT307501](#)

Interval (hrs) - As required.



CAB FRESH AIR FILTER

[AT191102](#)

Interval (hrs) - As Required.



FINAL FUEL FILTER

[RE522878](#)

Interval (hrs) - 500.



ENGINE OIL FILTER

[RE555767](#)

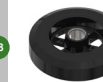
Interval (hrs) - 500.



STEERING CY LINDER JOINT

[T277593](#)

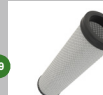
Interval (hrs) - As Required.



BUCKET TO BUCKET LINK JOINT

[AT336321](#)

Interval (hrs) - As Required.



ATTACHMENT TO BUCKET LINK JOINT

[AT336321](#)

Interval (hrs) - As Required.



JOHN DEERE
Genuine Parts and Service

CLICK PART NUMBER TO BUY

*See operator's manual for additional details.

OIL & CAPACITIES INFORMATION

544K (PIN: 1BZ544K_ _ _D000001—)

Part Description	Qty or capacity	Change Interval In Hours
John Deere Plus-50™ II Engine Oil ⁴	19.0 L (5.0 gal)	500
John Deere Torq-Gard™ Hydraulic Oil ⁴	92.0 L (24.3 gal)	4000
John Deere Hy-Gard™ Transmission ⁴	18.5 L (4.9 gal)	2000
John Deere Hy-Gard™ Park Brake ⁴	0.3 L (10.0 fl oz)	1000
John Deere Hy-Gard™ Front Axle and Rear Axle (each) ⁴	17.0 L (4.5 gal)	2000
COOL-GARD™ II Pre-Mix	23.0 L (6.1 gal)	6000

OIL & CAPACITIES INFORMATION

544K (PIN: 1BZ544K_ _ _D000001—)

Part Description	Qty or capacity	Change Interval In Hours
Fluid Analysis Test Kits⁵		
Engine Oil	1	250
Transmission Oil	1	500
Axle Oil	2	500
Hydraulic Oil	1	500
Diesel Fuel	1	500
Engine Coolant	1	500

⁴ See operator's manual for recommended oil type and oil viscosities based on operating temperatures.
⁵ Based on fluid analysis results, intervals may need to be adjusted for operating conditions. Consult a local John Deere dealer

Plus-50 is a trademark of Deere & Company

Hydrau is a trademark of Deere & Company

Hy-Gard is a trademark of Deere & Company

Cool-Gard is a trademark of Deere & Company

Service Intervals

As Required	
• Inspect tires and check pressure	• Drain water from primary fuel filter and water separator
• Check wheel bolt torque	• Drain water from final fuel filter
• Inspect engine air cleaner elements	• Drain water from auxiliary fuel filter and water separator (if equipped)
• Inspect air conditioner compressor and alternator belt	• Check and clean or replace cab fresh air filter
• Clean cooler cores	• Check and clean or replace cab recirculating air filter
• Check windshield washer fluid level	• Check coolant
• Check rear camera and radar object detection (ROD) system (if equipped)	
Every 10 Hours or Daily	
• Clean air cleaner dust unloader valve	• Check hydraulic oil level
• Check coolant level in surge tank	• Check transmission oil level
• Check engine oil level	• Inspect outer pin seals
Every 100 Hours	
• Lubricate loader linkage and cylinder pivots (unless Nevergrease™ equipped)	
Initial Service—250 Hours ¹	
• Drain and refill engine oil and replace filter	• Replace axle oil filter (if equipped)
• Drain and refill front and rear axle oil	
Every 250 Hours	
• Take engine oil sample	
Every 500 Hours	
• Lubricate driveline upper and lower sliding joints and lower U-joints	• Replace hydraulic reservoir breather filter
• Check front and rear axle oil level	• Check park brake oil level
• Lubricate front and rear axle shaft seals	• Lubricate front and rear shaft seals on park brake
• Check battery water level and terminals	• Check ride control accumulator (if equipped)
• Check air intake hoses and charge air cooler tube couplings	• Take axle oil sample
• Drain and refill engine oil and replace filter	• Take engine coolant sample
• Replace primary fuel filter	• Take transmission oil sample
• Replace final fuel filter	• Take hydraulic oil sample
• Replace auxiliary fuel filter (if equipped)	• Take diesel fuel sample
• Replace in-line fuel strainer	
Every 1000 Hours	
• Clean engine crankcase vent tube	• Replace axle oil filter (if equipped)
• Replace air cleaner dust unloader valve	• Lubricate frame hinge pivots
• Replace engine air cleaner elements	• Drain and refill park brake oil
• Check coolant	
Every 2000 Hours	
• Drain and refill transmission oil and replace filter ²	• Adjust engine valve lash (clearance)
• Drain and refill front and rear axle oil ³	• Rerun transmission clutch calibration
• Clean front and rear axle oil recirculation screens (if equipped)	• Replace outer pin seals
Every 4000 Hours	
• Replace crankshaft damper	• Drain, flush, and refill hydraulic system oil
• Clean hydraulic pump case drain in-line screen	• Clean hydraulic system fill strainer
• Replace hydraulic system return filter	
Every 5000 Hours	
• Inspect driveline damper	
Every 6000 Hours	
• Drain and refill engine cooling system	