

REPLACEMENT PARTS GUIDE

544K-II Loader (PIN: 1DW544K___D677549—)



ENGINE AIR CLEANER ELEMENT— SECONDARY FILTER

[AT314583](#)

Interval (hrs) - 1000



ENGINE AIR CLEANER ELEMENT— PRIMARY FILTER

[R524469](#)

Interval (hrs) - 1000.



HYDRAULIC RESERVOIR BREATHER FILTER

[AM39653](#)

Interval (hrs) - 500.



CAB FRESH AIR FILTER

[AT191102](#)

Interval (hrs) :As Required.



CAB RECIRCULATING FILTER

[AT307501](#)

Interval (hrs) :As Required.



HYDRAULIC SYSTEM RETURN FILTER

[AT335977](#)

Interval (hrs) - 4000.



AXLE OIL FILTERS (IF EQUIPPED)

[AT367635](#)

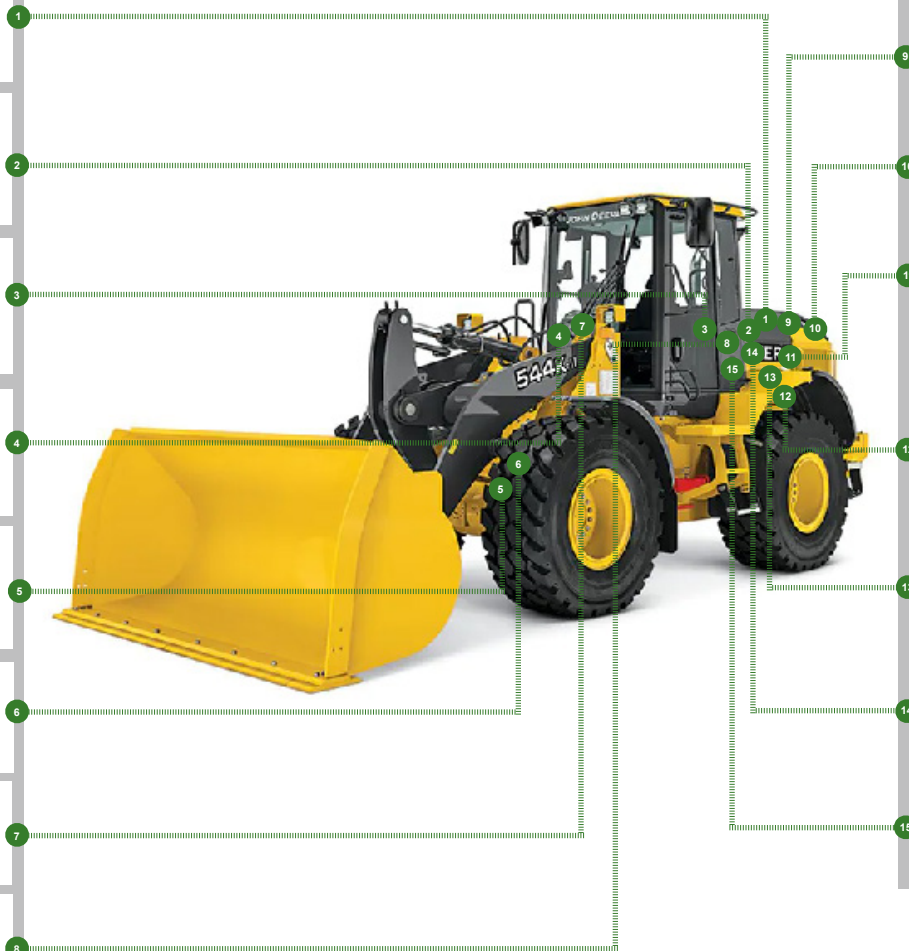
Interval (hrs) - 1000.



TRANSMISSION OIL FILTER

[AT468647](#)

Interval (hrs) - 2000



AUXILIARY FUEL FILTER (IF EQUIPPED)

[AT365870](#)

Interval (hrs) - 500.



ENGINE ROCKER ARM COVER GASKET

[R524469](#)

Interval (hrs) - 2000.



IN-LINE FUEL STRAINER

[RE522878](#)

Interval (hrs) - 500



ENGINE AIR CLEANER DUST UNLOADER VALVE

[M89679](#)

Interval (hrs) - 1000.



PRIMARY FUEL FILTER

[RE541922](#)

Interval (hrs) - 500.



FINAL FUEL FILTER

[RE522878](#)

Interval (hrs) - 500.



ENGINE OIL FILTER

[RE504836](#)

Interval (hrs) - 500.

OIL & CAPACITIES INFORMATION

544K-II Loader (PIN: 1DW544K___D677549—)

Part Description	Qty or capacity	Change Interval In Hours
John Deere Plus-50™ II Engine Oil ³	19.5 L (5.1 gal)	500
John Deere Hydrau™ Hydraulic Oil ³	92.0 L (24.3 gal)	4000
John Deere Hy-Gard™ Front Axle Oil ³	17.0 L (4.5 gal)	2000
John Deere Hy-Gard™ Rear Axle Oil ³	17.0 L (4.5 gal)	2000
John Deere Hy-Gard™ Park Brake Oil ³	300.0 mL (10.0 fl oz)	1000
John Deere Hy-Gard™ Transmission Oil ³	21.5 L (5.7 gal)	2000
John Deere Cool-Gard™ Pre-Mix	23.5 L (6.2 gal)	6000

OIL & CAPACITIES INFORMATION

544K-II Loader (PIN: 1DW544K_ _ _D677549—)

Part Description	Qty or capacity	Change Interval In Hours
Fluid Analysis Test Kits⁴		
Diesel Engine Oil	1	250
Transmission Oil	1	500
Axle Oil	2	500
Hydraulic Oil	1	500
Diesel Fuel	1	500
Engine Coolant	1	500
³ See operator's manual for recommended oil type and oil viscosities based on operating temperatures. ⁴ Based on fluid analysis results, intervals may need to be adjusted for operating conditions. Consult an authorized John Deere dealer.		

Plus-50 is a trademark of Deere & Company
Hydrau is a trademark of Deere & Company
Hy-Gard is a trademark of Deere & Company
Cool-Gard is a trademark of Deere & Company



CLICK PART NUMBER TO BUY

*See operator's manual for additional details.

Service Intervals

As Required	
<input type="checkbox"/> Inspect tires and check pressure	<input type="checkbox"/> Drain water from auxiliary fuel filter with water separator (if equipped)
<input type="checkbox"/> Check wheel bolt torque	<input type="checkbox"/> Check window washer fluid level
<input type="checkbox"/> Inspect engine air cleaner elements	<input type="checkbox"/> Drain water from primary fuel filter with water separator
<input type="checkbox"/> Inspect air conditioner compressor and alternator belt	<input type="checkbox"/> Drain water from final fuel filter
<input type="checkbox"/> Clean cooler cores	<input type="checkbox"/> Check and clean or replace cab fresh air filter
<input type="checkbox"/> Check rear camera and radar object detection (ROD) system (if equipped)	<input type="checkbox"/> Check and clean or replace cab recirculating air filter
Every 10 Hours or Daily	
<input type="checkbox"/> Clean air cleaner dust unloader valve	<input type="checkbox"/> Check hydraulic system oil level
<input type="checkbox"/> Check coolant level at surge tank	<input type="checkbox"/> Check transmission oil level
<input type="checkbox"/> Check engine oil level	<input type="checkbox"/> Inspect outer pin seals (if equipped)
Every 100 Hours	
<input type="checkbox"/> Lubricate loader linkage and cylinder pivots	
Initial Service—250 Hours	
<input type="checkbox"/> Drain and refill front and rear axle oil	<input type="checkbox"/> Replace axle oil filters (if equipped)
Every 250 Hours	
<input type="checkbox"/> Take engine oil sample	
Every 500 Hours	
<input type="checkbox"/> Lubricate driveline upper and lower sliding joints and lower U-joints	<input type="checkbox"/> Replace in-line fuel strainer
<input type="checkbox"/> Check front and rear axle oil level	<input type="checkbox"/> Replace auxiliary fuel filter (if equipped)
<input type="checkbox"/> Lubricate front and rear axle shaft seals	<input type="checkbox"/> Drain and refill engine oil and replace filter
<input type="checkbox"/> Check battery electrolyte level and terminals	<input type="checkbox"/> Replace primary fuel filter
<input type="checkbox"/> Check air intake hoses and charge air cooler tube couplings	<input type="checkbox"/> Replace final fuel filter
<input type="checkbox"/> Take axle oil sample	<input type="checkbox"/> Replace hydraulic reservoir breather filter
<input type="checkbox"/> Take transmission oil sample	<input type="checkbox"/> Check park brake oil level
<input type="checkbox"/> Take hydraulic oil sample	<input type="checkbox"/> Lubricate front and rear park brake shaft seals
<input type="checkbox"/> Take diesel fuel sample	<input type="checkbox"/> Check ride control accumulator (if equipped)
<input type="checkbox"/> Take engine coolant sample	
Every 1000 Hours	
<input type="checkbox"/> Replace air cleaner dust unloader valve	<input type="checkbox"/> Clean engine crankcase vent tube
<input type="checkbox"/> Replace engine air cleaner elements	<input type="checkbox"/> Lubricate frame hinge pivots
<input type="checkbox"/> Replace axle oil filters (if equipped)	<input type="checkbox"/> Drain and refill park brake oil
<input type="checkbox"/> Check coolant condition	
Every 2000 Hours	
<input type="checkbox"/> Drain and refill transmission oil and replace filter	<input type="checkbox"/> Rerun transmission clutch calibration (cab monitor)
<input type="checkbox"/> Drain and refill front and rear axle oil	<input type="checkbox"/> Replace outer pin seals (if equipped)
<input type="checkbox"/> Check and adjust engine valve lash	
Every 4000 Hours	
<input type="checkbox"/> Clean hydraulic pump case drain in-line screen	<input type="checkbox"/> Drain, flush, and refill hydraulic system oil
<input type="checkbox"/> Replace crankshaft damper	<input type="checkbox"/> Clean hydraulic system fill strainer
<input type="checkbox"/> Replace hydraulic system return filter	
Every 5000 Hours	
<input type="checkbox"/> Check driveline damper for cracks	
Every 6000 Hours	
<input type="checkbox"/> Drain and refill cooling system	