

# REPLACEMENT PARTS GUIDE

## 310 P Articulated Dump Truck (PIN: 1DW310PA\_\_F\_00001-)



### FAST FILL FUEL BREATHER (IF EQUIPPED)

[T225008](#)

Interval (hrs) - 500.



### FINAL FUEL FILTER ELEMENT

[DZ112918](#)

Interval (hrs) - 500.



### PRIMARY FUEL FILTER ELEMENT

[RE539465](#)

Interval (hrs) - 500.



### ENGINE OIL FILTER<sup>2</sup>

[DZ118283](#)

Interval (hrs) - 5000.



### HYDRAULIC SYSTEM RETURN FILTER ELEMENT

[AT335977](#)

Interval (hrs) - 4000.



### ENGINE AIR FILTER ELEMENT—SECONDARY

[T340572](#)

Interval (hrs) - 6000.



### ENGINE AIR FILTER ELEMENT—PRIMARY

[T340571](#)

Interval (hrs) - 2000.



### AUXILIARY FUEL FILTER ELEMENT (IF EQUIPPED)

[AT365869](#)

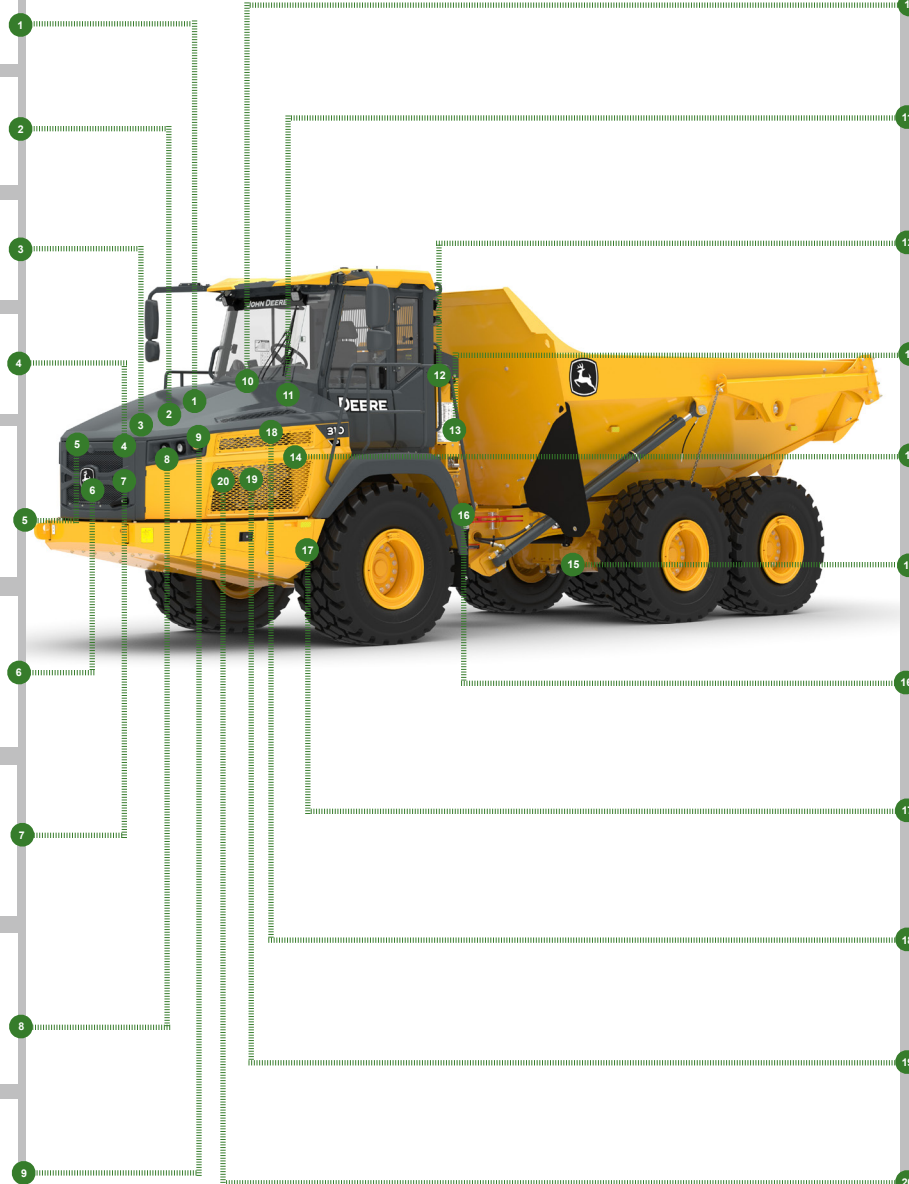
Interval (hrs) - 500.



### FUEL TANK BREATHER

[H216169](#)

Interval (hrs) - 2000.



### HYDRAULIC RESERVOIR BREATHER

[AM39653](#)

Interval (hrs) - 4000



### DEF TANK BREATHER FILTER

[DZ114640](#)

Interval (hrs) - 6000.



### CAB RECIRCULATING AIR FILTER

[AT307501](#)

Interval (hrs) - As Required.



### CAB FRESH AIR FILTER

[AT191102](#)

Interval (hrs) - As Required.



### AIR CLEANER DUST UNLOADER VALVE

[T459385](#)

Interval (hrs) - 2000.



### AXLE OIL FILTER (IF EQUIPPED)<sup>2</sup>

[AT489922](#)

Interval (hrs) - 1000.



### EXHAUST FILTER(DPF)

[DZ100174](#)

Interval (hrs) - As Required



### STEERING CYLINDER SEALS

[AT469779](#)

Interval (hrs) - As Required.



### TRANSMISSION OIL FILTER<sup>3</sup>

[AT468647](#)

Interval (hrs) - 2000.



### ENGINE ROCKER ARM COVER GASKET

[R527884](#)

Interval (hrs) - 2000.



### DEF INLINE FILTER

[DZ124402](#)

Interval (hrs) - 2000.



CLICK PART NUMBER TO BUY

\*See operator's manual for additional details

# OILS AND CAPACITIES INFORMATION

## 310 P Articulated Dump Truck (PIN: 1DW310PA\_\_F\_00001- )

| Part Description  | Qty or capacity    | Change Interval In Hours |
|---|--------------------|--------------------------|
| John Deere Plus-50™ II Engine Oil <sup>2,4</sup>          | 34.0 L (9.0 gal)   | 500                      |
| John Deere HD Synthetic Transmission Fluid <sup>3,4</sup> | 60.0 L (15.9 gal)  | 2000                     |
| John Deere Hy-Gard™ Front Axle Oil <sup>2,4</sup>         | 37.0 L (9.8 gal)   | 2000                     |
| John Deere Hy-Gard™ Middle Axle Oil <sup>2,4</sup>        | 37.0 L (9.8 gal)   | 2000                     |
| John Deere Hy-Gard™ Rear Axle Oil <sup>2,4</sup>          | 37.0 L (9.8 gal)   | 2000                     |
| John Deere Hydrau™ Hydraulic System Oil <sup>2</sup>      | 113.5 L (30.0 gal) | 4000                     |
| John Deere COOL-GARD™ II Pre-Mix                          | 48.0 L (12.7 gal)  | 6000                     |

# OILS AND CAPACITIES INFORMATION

## 310 P Articulated Dump Truck (PIN: 1DW310PA\_\_F\_00001- )

| Fluid Analysis Kits <sup>4</sup> |                 |                          |
|----------------------------------|-----------------|--------------------------|
| Part Description                 | Qty or Capacity | Change Interval In Hours |
| Diesel Engine Oil Kit            | 1               | 250                      |
| Transmission Oil Kit             | 1               | 500                      |
| Axle Oil Kit                     | 3               | 500                      |
| Hydraulic Oil Kit                | 1               | 500                      |
| Diesel Fuel Kit                  | 1               | 500                      |
| Engine Coolant Kit               | 1               | 500                      |

<sup>1</sup>Perform initial service once after the first 500 hours of operation.  
<sup>2</sup>Interval not to exceed 12 months.  
<sup>3</sup>Interval not to exceed 24 months.  
<sup>4</sup>See operator's manual for recommended oil type and oil viscosities based on operating temperatures.  
<sup>5</sup>Based on fluid analysis results, intervals may need to be adjusted for operating conditions. Consult an authorized John Deere dealer.

*Plus-50 is a trademark of Deere & Company*

*Hy-Gard is a trademark of Deere & Company*

*Hydrau is a trademark of Deere & Company*

*COOL-GARD is a trademark of Deere & Company*

## Service Intervals

| Service Intervals—D Engine  |   |
|---|---|
| <b>As Required</b>  |   |
| <input type="checkbox"/> Clean and tighten battery terminals  | <input type="checkbox"/> Inspect tires and check pressure   |
| <input type="checkbox"/> Inspect serpentine belt  | <input type="checkbox"/> Check wheel bolt torque  |
| <input type="checkbox"/> Check engine air cleaner elements  | <input type="checkbox"/> Check service brake disc wear  |
| <input type="checkbox"/> Check windshield washer fluid level  | <input type="checkbox"/> Inspect steering cylinder seals  |
| <input type="checkbox"/> Drain primary and final fuel filter with water separators                  | <input type="checkbox"/> Check cab air filters  |
| <input type="checkbox"/> Drain auxiliary fuel filter with water separator (if equipped)             | <input type="checkbox"/> Check rear camera and radar object detection system (RODS) (if equipped) |
| <input type="checkbox"/> Clean cooler cores   |   |
| <b>Every 10 Hours or Daily</b>  |   |
| <input type="checkbox"/> Clean dust unloader valve  | <input type="checkbox"/> Check hydraulic system oil level   |
| <input type="checkbox"/> Check engine oil level   | <input type="checkbox"/> Check transmission oil level   |
| <input type="checkbox"/> Check engine coolant level   |   |
| <b>Every 50 Hours or Weekly</b>   |   |
| <input type="checkbox"/> Lubricate articulation joint, oscillation joint, and through-drive bearing | <input type="checkbox"/> Lubricate greaseable steering cylinder pins                              |
| <b>Every 250 Hours</b>  |   |
| <input type="checkbox"/> Take engine oil sample   |   |
| <b>Initial Service - 500 Hours</b>  |   |
| <input type="checkbox"/> Replace axle oil filters (if equipped)                                     | <input type="checkbox"/> Rerun transmission clutch calibration (cab monitor)                      |
| <input type="checkbox"/> Drain and refill axle oil <sup>2</sup>                                     |   |
| <b>Every 500 Hours</b>  |   |
| <input type="checkbox"/> Check hybrid battery electrolyte level (if equipped)                       | <input type="checkbox"/> Check air intake hoses and charge air cooler tube couplings              |
| <input type="checkbox"/> Take diesel fuel sample  | <input type="checkbox"/> Replace primary fuel filter with water separator                         |
| <input type="checkbox"/> Take axle oil sample   | <input type="checkbox"/> Replace auxiliary fuel filter with water separator (if equipped)         |
| <input type="checkbox"/> Take transmission oil sample   | <input type="checkbox"/> Replace final fuel filter  |
| <input type="checkbox"/> Take coolant sample  | <input type="checkbox"/> Replace fuel tank breather (if equipped) with fast fill                  |
| <input type="checkbox"/> Take hydraulic oil sample  | <input type="checkbox"/> Check park brake pad wear and lubricate linkage                          |
| <input type="checkbox"/> Drain and refill engine oil and replace filter <sup>2</sup>                |   |
| <b>Every 1000 Hours</b>   |   |
| <input type="checkbox"/> Replace axle oil filters (if equipped) <sup>2</sup>                        | <input type="checkbox"/> Check axle oil levels  |
| <input type="checkbox"/> Check coolant condition  | <input type="checkbox"/> Check and adjust dump body shock pads                                    |
| <b>Every 2000 Hours</b>   |   |
| <input type="checkbox"/> Replace primary air cleaner element  | <input type="checkbox"/> Clean and inspect axle breathers   |
| <input type="checkbox"/> Check and adjust engine valve lash   | <input type="checkbox"/> Drain and refill transmission oil <sup>3</sup>                           |
| <input type="checkbox"/> Replace fuel tank breather filter  | <input type="checkbox"/> Replace transmission oil filters <sup>3</sup>                            |
| <input type="checkbox"/> Drain and refill axle oil <sup>2</sup>                                     | <input type="checkbox"/> Run transmission clutch calibration (cab monitor)                        |
| <input type="checkbox"/> Clean axle pump suction screen (if equipped)                               |   |

## Service Intervals

| Service Intervals—D Engine  |  |
|---|--|
| <input type="checkbox"/> Clean hydraulic system fill strainer     | <input type="checkbox"/> Drain and refill hydraulic system oil |
| <input type="checkbox"/> Replace hydraulic system return filter   | <input type="checkbox"/> Replace hydraulic reservoir breather  |
| <input type="checkbox"/> Clean hydraulic pump case in-line screen |  |
| Every 6000 Hours  |  |
| <input type="checkbox"/> Replace secondary air cleaner element    | <input type="checkbox"/> Inspect driveline torsional coupler   |
| <input type="checkbox"/> Drain and refill engine cooling system   |  |